

# Converting Colors

CIELCh(71, 29.723, 57.663)

Have a look what the booklet for  
CIELCh(71, 29.723, 57.663) contains.

<b>CIELCh(71, 29.852, 57.224)</b> .....	3
<b><i>Conversions</i></b> .....	4
<b><i>Details</i></b> .....	6
<b><i>Harmonies</i></b> .....	11
<b><i>Previews</i></b> .....	20
<b><i>Color Blindness Simulation</i></b> .....	23
<b><i>CSS Examples</i></b> .....	26

# Color

**CIELCh(71, 29.852, 57.224)**

# Conversions

## Conversions Part 1

<b>Format</b>	<b>Color</b>
Hex	D9A281
RGB	217, 162, 129
RGB Percent	85%, 64%, 51%
CMY	0.1489, 0.3646, 0.4940
CMYK	0.00, 0.25, 0.41, 0.15
HSL	23°, 54%, 68%
HSV	23°, 41%, 85%
XYZ	45.5086, 42.1875, 26.5194
YIQ	174.6830, 43.3730, 1.3970

# Conversions

## Conversions Part 2

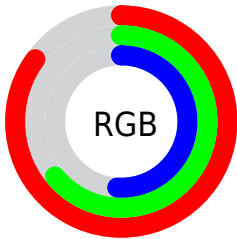
Format	Color
R <sub>Y</sub> B	217, 182, 129
Decimal	14262913
CIE Lab	71.00, 16.16, 25.10
CIE LCh	71, 29.852, 57.224
Yxy	42.1875, 0.3984, 0.3694
Android (android.graphics.Color)	4292452993 (0xFFD9A281)
YUV	174.6830, -22.5217, 37.1120
Hunter-Lab	64.9519, 11.4004, 21.2586

# Details

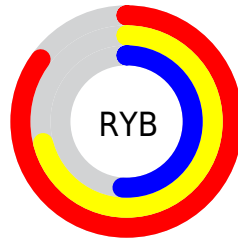
The CIELCh color **71, 29.852, 57.224** is a light color, and the websafe version is hex **CC9966**. A complement of this color would be **72, 24.200, 246.826**, and the grayscale version is **71, 0.009, 296.813**.

A 20% lighter version of the original color is **89, 23.632, 69.661**, and **51, 29.962, 57.319** is the 20% darker color. If you saturate the color by 10%, you get **67, 38.503, 56.468**, and if you desaturate by 10%, it is **75, 21.725, 58.050**.

# Distribution



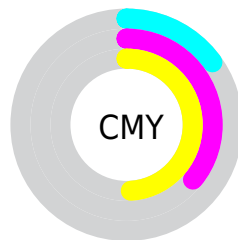
- Red (85%)
- Green (64%)
- Blue (51%)



- Red (85%)
- Yellow (71%)
- Blue (51%)



- Cyan (0%)
- Magenta (25%)
- Yellow (41%)
- Black (15%)



- Cyan (15%)
- Magenta (36%)
- Yellow (49%)

# Brightness & Saturation Gradients

These gradients show how the CIELCh color 71, 29.852, 57.224 changes by changing the brightness by 10 percent. The first figure shows a shift by +10% for each color and the second figure -10%.

Similar to the brightness gradients but the following saturation gradients show a change of the CIELCh color 71, 29.852, 57.224 by changing the saturation by 10% instead.



71, 29.852, 57.224

71, 29.852, 57.224

100, 29.852,  
57.224

61, 29.852, 57.224

91, 29.852, 57.224

51, 29.852, 57.224

41, 29.852, 57.224

31, 29.852, 57.224

21, 29.852, 57.224

11, 29.852, 57.224

1, 29.852, 57.224

0, 29.852, 57.224

71, 29.852, 57.224

71, 29.852, 57.224

67, 38.503, 56.468

75, 21.725, 58.050

64, 47.624, 55.757

79, 14.121, 58.916

61, 57.035, 55.050

83, 7.010, 59.797

58, 66.307, 54.212

86, 0.349, 59.399

55, 74.550, 52.931

91, 5.911, 241.837

53, 80.626, 51.138

94, 10.549,  
233.537

97, 12.764,  
198.653

# Harmonies

# Complementary

The Complementary color scheme is a pair of colors which are on the opposite of each other on the color wheel.



71, 29.852, 57.224



72, 24.200, 246.826

# Rectangle

The Rectangle color scheme consists of four colors that form a rectangle on the color wheel.



71, 29.852, 57.224



71, 29.852, 107.224



71, 29.852, 237.224



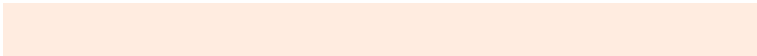
71, 29.852, 287.224

# Sweetspot

The Sweet Spot groups the original color and five complimentary colors.



71, 29.851, 57.230



95, 9.136, 59.661



65, 44.004, 340.477



50, 6.087, 59.546



0, 0.000, 0.000



53, 0.007, 296.813



# Same Dimension

The Same Dimension uses a secret algorithm to generate beautiful new colors.



71, 29.851, 57.230



79, 42.383, 56.549



82, 39.950, 99.644



44, 3.790, 59.892



42, 67.842, 51.721



9, 18.900, 45.929





# Inverse Universe

The Inverse Universe completely reimagines the original color for something new.



72, 24.200, 246.826



80, 32.542, 248.936



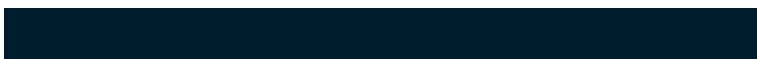
60, 43.014, 290.120



44, 3.638, 241.916



44, 41.843, 268.494



9, 14.946, 257.792



# Previews

## White Background



This preview shows how the CIELCh color 71, 29.852, 57.224 looks on a white background.

## Color Contrast Check

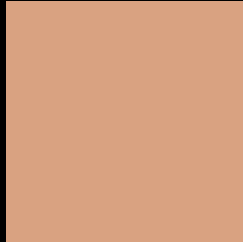
Large Text (above 18pt) WCAG AA × Fail

Any Text WCAG AA × Fail

Large Text (above 18pt) WCAG AAA × Fail

Any Text WCAG AAA × Fail

# Black Background



This preview shows how the CIELCh color 71, 29.852, 57.224 looks on a black background.

## Color Contrast Check

Large Text (above 18pt) WCAG AA ✓ Pass

Any Text WCAG AA ✓ Pass

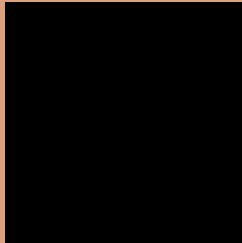
Large Text (above 18pt) WCAG AAA ✓ Pass

Any Text WCAG AAA ✓ Pass

If you want to check with other color combinations, try the [Color Contrast Checker](#).

# CIELCh 71, 29.852, 57.224

## Background



This preview shows how black text looks on a background with the CIELCh color 71, 29.852, 57.224.



This preview shows how white text looks on a background with the CIELCh color 71, 29.852, 57.224.

# Color Blindness Simulation

Color vision deficiency is a very complex topic, and I could not describe the different causes any better than Wikipedia does, so if you want to learn more, you should check out their [article about color blindness](#).

## Dichromacy



### Original Color

71, 29.852, 57.224

### Protanopia

71, 22.217, 95.176

### Deuteranopia

71, 27.097, 70.708



**Tritanopia**  
71, 25.751, 7.397



# Trichromacy



**Original Color**  
71, 29.852, 57.224

**Protanomaly**  
71, 23.617, 79.683

**Deuteranomaly**  
71, 28.037, 65.483

**Tritanomaly**  
71, 24.872, 27.794

# Monochromacy



**Original Color**  
71, 29.852, 57.224

**Achromatopsia**  
71, 0.009, 296.813

**Achromatomaly**  
71, 10.253, 59.250

# CSS Examples

## Text

The CSS property to change the color of the text to CIELCh 71, 29.852, 57.224 is called "color". The color property can be set on classes, ids or directly on the HTML element.

This example shows how text in the color `rgb(217, 162, 129)` looks like.

```
.text, #text, p{  
    color:rgb(217, 162, 129)  
}
```

If you want to add a text shadow in that color use the text-shadow property, you can generate a text shadow directly with our [CSS Text Shadow Generator](#).

Here you see how black text with a 4 pixel rgb(217, 162, 129) colored shadow looks like.

```
.shadow{ text-shadow: 4px 4px 2px rgb(217, 162, 129) }
```

## Border

The CSS property to change the border of an element to CIELCh 71, 29.852, 57.224 is called "border". The border property can be set on classes, ids or directly on the HTML element.

This example shows the color as border, it can be applied via the CSS property "border" or "border-color".

```
.border, #border, table{ border:4px solid rgb(217, 162, 129) }
```

If only the border color should be changed use the property `border-color`.

```
.border{ border-color:rgb(217, 162, 129) }
```

If you want to add a box shadow in that color use:

Here you see how a box with a 4 pixel `rgb(217, 162, 129)` colored shadow looks like.

```
.boxshadow{ -moz-box-shadow:4px 4px 4px  
4px rgb(217, 162, 129); -webkit-box-  
shadow:4px 4px 4px 4px rgb(217, 162, 129);  
box-shadow:4px 4px 4px 4px rgb(217, 162,  
129) }
```

# Background

The CSS property to change the background color of an element to CIELCh 71, 29.852, 57.224 is called "background". The background property can be set on classes, ids or directly on the HTML element.

```
.background, #background, body{  
background: rgb(217, 162, 129) }
```

If only the background color should be changed can be used:

```
.background{ background-color: rgb(217,  
162, 129) }
```

This example shows the color as background, it is applied via the CSS property "background".

To optimize and compress your CSS code, you can use our [online CSS compressor and optimizer](#) based on csstidy. If you want to create a linear or radial gradient as background or border, check our [CSS Gradient Generator](#).

Hey! You found this booklet interesting? Support Converting Colors with the new Membership Option!

The pro membership hides all ads, plus gives you double the colors in the color bucket, and more awesome pro features!

**[Learn more, Memberships starting at \\$2.50/m!](#)**

**Follow me  
on Twitter!**

@ConvertingColor