

Converting Colors

CIELCh(71, 31.377, 58.724)

Have a look what the booklet for
CIELCh(71, 31.377, 58.724) contains.

CIELCh(71, 31.341, 58.814)	3
<i>Conversions</i>	4
<i>Details</i>	6
<i>Harmonies</i>	11
<i>Previews</i>	20
<i>Color Blindness Simulation</i>	23
<i>CSS Examples</i>	26

Color

CIELCh(71, 31.341, 58.814)

Conversions

Conversions Part 1

Format	Color
Hex	DAA27E
RGB	218, 162, 126
RGB Percent	85%, 64%, 49%
CMY	0.1456, 0.3652, 0.5063
CMYK	0.00, 0.26, 0.42, 0.15
HSL	23°, 55%, 67%
HSV	23°, 42%, 85%
XYZ	45.5325, 42.1875, 25.4434
YIQ	174.6400, 44.9320, 0.6760

Conversions

Conversions Part 2

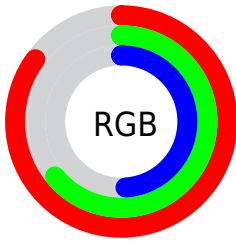
Format	Color
R _Y B	218, 185, 126
Decimal	14328446
CIE Lab	71.00, 16.23, 26.81
CIE LCh	71, 31.341, 58.814
Yxy	42.1875, 0.4024, 0.3728
Android (android.graphics.Color)	4292518526 (0xFFDAA27E)
YUV	174.6400, -23.9795, 38.0267
Hunter-Lab	64.9519, 11.4659, 22.2408

Details

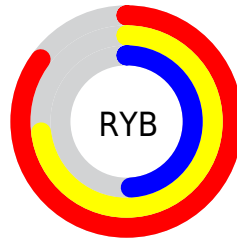
The CIELCh color **71, 31.341, 58.814** is a light color, and the websafe version is hex **CC9966**. A complement of this color would be **71, 25.462, 249.421**, and the grayscale version is **71, 0.009, 296.813**.

A 20% lighter version of the original color is **89, 24.904, 71.676**, and **51, 31.164, 58.221** is the 20% darker color. If you saturate the color by 10%, you get **67, 40.049, 57.977**, and if you desaturate by 10%, it is **75, 23.133, 59.709**.

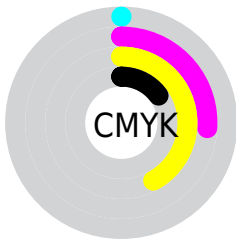
Distribution



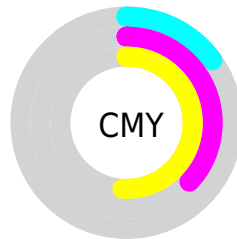
- Red (85%)
- Green (64%)
- Blue (49%)



- Red (85%)
- Yellow (73%)
- Blue (49%)



- Cyan (0%)
- Magenta (26%)
- Yellow (42%)
- Black (15%)



- Cyan (15%)
- Magenta (37%)
- Yellow (51%)

Brightness & Saturation Gradients

These gradients show how the CIELCh color 71, 31.341, 58.814 changes by changing the brightness by 10 percent. The first figure shows a shift by +10% for each color and the second figure -10%.

Similar to the brightness gradients but the following saturation gradients show a change of the CIELCh color 71, 31.341, 58.814 by changing the saturation by 10% instead.

71, 31.341, 58.814

71, 31.341, 58.814

100, 31.341,
58.814

61, 31.341, 58.814

91, 31.341, 58.814

51, 31.341, 58.814

41, 31.341, 58.814

31, 31.341, 58.814

21, 31.341, 58.814

11, 31.341, 58.814

1, 31.341, 58.814

0, 31.341, 58.814

71, 31.341, 58.814

71, 31.341, 58.814

67, 40.049, 57.977

75, 23.133, 59.709

64, 49.182, 57.167

78, 15.433, 60.638

61, 58.524, 56.332

82, 8.216, 61.582

58, 67.580, 55.313

86, 1.441, 62.297

55, 75.367, 53.767

90, 4.935, 243.722

53, 80.138, 52.151

94, 10.421,
241.232

97, 12.390,
199.370

97, 12.491,
198.671

Harmonies

Complementary

The Complementary color scheme is a pair of colors which are on the opposite of each other on the color wheel.



71, 31.341, 58.814



71, 25.462, 249.421

Rectangle

The Rectangle color scheme consists of four colors that form a rectangle on the color wheel.



71, 31.341, 58.814



71, 31.341, 108.814



71, 31.341, 238.814



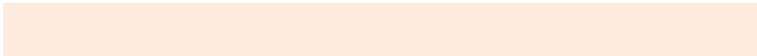
71, 31.341, 288.814

Sweetspot

The Sweet Spot groups the original color and five complimentary colors.



71, 31.340, 58.820



94, 9.960, 61.498



64, 45.398, 341.485



49, 7.020, 61.289



0, 0.000, 0.000



53, 0.007, 296.813

Same Dimension

The Same Dimension uses a secret algorithm to generate beautiful new colors.



71, 31.340, 58.820



78, 44.332, 58.040



82, 42.313, 100.389



44, 3.803, 61.838



43, 67.241, 52.755



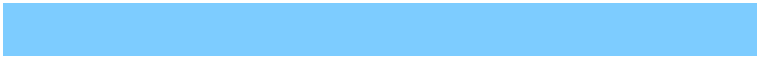
9, 18.768, 47.629

Inverse Universe

The Inverse Universe completely reimagines the original color for something new.



71, 25.462, 249.421



79, 34.151, 251.752



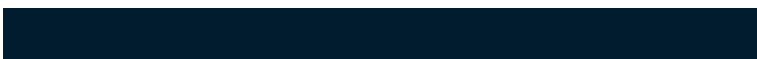
59, 45.979, 291.236



44, 3.659, 243.954



43, 43.210, 270.880



9, 15.290, 260.199

Previews

White Background



This preview shows how the CIELCh color 71, 31.341, 58.814 looks on a white background.

Color Contrast Check

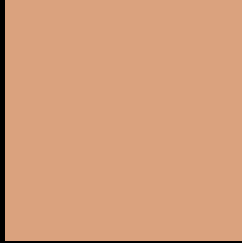
Large Text (above 18pt) WCAG AA × Fail

Any Text WCAG AA × Fail

Large Text (above 18pt) WCAG AAA × Fail

Any Text WCAG AAA × Fail

Black Background



This preview shows how the CIELCh color 71, 31.341, 58.814 looks on a black background.

Color Contrast Check

Large Text (above 18pt) WCAG AA ✓ Pass

Any Text WCAG AA ✓ Pass

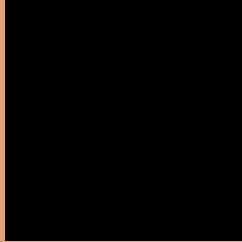
Large Text (above 18pt) WCAG AAA ✓ Pass

Any Text WCAG AAA ✓ Pass

If you want to check with other color combinations, try the [Color Contrast Checker](#).

CIELCh 71, 31.341, 58.814

Background



This preview shows how black text looks on a background with the CIELCh color 71, 31.341, 58.814.

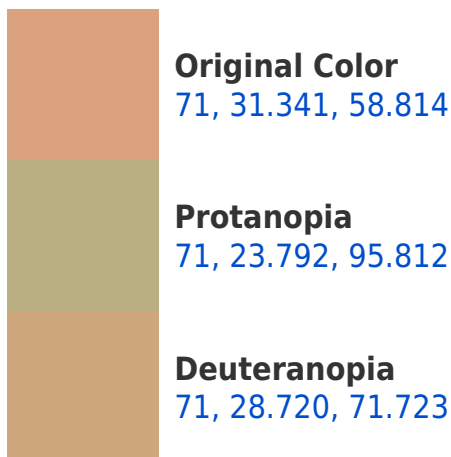


This preview shows how white text looks on a background with the CIELCh color 71, 31.341, 58.814.

Color Blindness Simulation

Color vision deficiency is a very complex topic, and I could not describe the different causes any better than Wikipedia does, so if you want to learn more, you should check out their [article about color blindness](#).

Dichromacy





Tritanopia
71, 26.552, 7.940

Trichromacy



Original Color
71, 31.341, 58.814

Protanomaly
71, 25.283, 80.318

Deuteranomaly
71, 29.618, 66.742

Tritanomaly
71, 25.320, 27.739

Monochromacy



Original Color
71, 31.341, 58.814

Achromatopsia
71, 0.009, 296.813

Achromatomaly
71, 10.929, 60.023

CSS Examples

Text

The CSS property to change the color of the text to CIELCh 71, 31.341, 58.814 is called "color". The color property can be set on classes, ids or directly on the HTML element.

This example shows how text in the color `rgb(218, 162, 126)` looks like.

```
.text, #text, p{  
    color:rgb(218, 162, 126)  
}
```

If you want to add a text shadow in that color use the text-shadow property, you can generate a text shadow directly with our [CSS Text Shadow Generator](#).

Here you see how black text with a 4 pixel rgb(218, 162, 126) colored shadow looks like.

```
.shadow{ text-shadow: 4px 4px 2px rgb(218, 162, 126) }
```

Border

The CSS property to change the border of an element to CIELCh 71, 31.341, 58.814 is called "border". The border property can be set on classes, ids or directly on the HTML element.

This example shows the color as border, it can be applied via the CSS property "border" or "border-color".

```
.border, #border, table{ border:4px solid rgb(218, 162, 126) }
```

If only the border color should be changed use the property `border-color`.

```
.border{ border-color:rgb(218, 162, 126) }
```

If you want to add a box shadow in that color use:

Here you see how a box with a 4 pixel `rgb(218, 162, 126)` colored shadow looks like.

```
.boxshadow{ -moz-box-shadow:4px 4px 4px  
4px rgb(218, 162, 126); -webkit-box-  
shadow:4px 4px 4px 4px rgb(218, 162, 126);  
box-shadow:4px 4px 4px 4px rgb(218, 162,  
126) }
```

Background

The CSS property to change the background color of an element to CIELCh 71, 31.341, 58.814 is called "background". The background property can be set on classes, ids or directly on the HTML element.

```
.background, #background, body{  
background: rgb(218, 162, 126) }
```

If only the background color should be changed can be used:

```
.background{ background-color: rgb(218,  
162, 126) }
```

This example shows the color as background, it is applied via the CSS property "background".

To optimize and compress your CSS code, you can use our [online CSS compressor and optimizer](#) based on csstidy. If you want to create a linear or radial gradient as background or border, check our [CSS Gradient Generator](#).

Hey! You found this booklet interesting? Support Converting Colors with the new Membership Option!

The pro membership hides all ads, plus gives you double the colors in the color bucket, and more awesome pro features!

[Learn more, Memberships starting at \\$2.50/m!](#)

**Follow me
on Twitter!**

@ConvertingColor