

Converting Colors

CIELCh(71, 32.431, 57.427)

Have a look what the booklet for
CIELCh(71, 32.431, 57.427) contains.

CIELCh(71, 32.431, 57.430)	3
<i>Conversions</i>	4
<i>Details</i>	6
<i>Harmonies</i>	11
<i>Previews</i>	20
<i>Color Blindness Simulation</i>	23
<i>CSS Examples</i>	26

Color

CIELCh(71, 32.431, 57.430)

Conversions

Conversions Part 1

Format	Color
Hex	DCA17D
RGB	220, 161, 125
RGB Percent	86%, 63%, 49%
CMY	0.1372, 0.3686, 0.5098
CMYK	0.00, 0.27, 0.43, 0.14
HSL	23°, 58%, 68%
HSV	23°, 43%, 86%
XYZ	45.9632, 42.1875, 25.1234
YIQ	174.5370, 46.7200, 1.3120

Conversions

Conversions Part 2

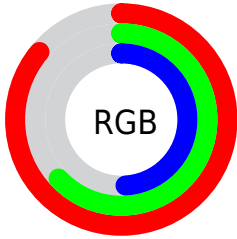
Format	Color
R _Y B	220, 183, 125
Decimal	14459261
CIE Lab	71.00, 17.46, 27.33
CIE LCh	71, 32.431, 57.430
Yxy	42.1875, 0.4058, 0.3724
Android (android.graphics.Color)	4292649341 (0xFFDCA17D)
YUV	174.5370, -24.4217, 39.8711
Hunter-Lab	64.9519, 12.6495, 22.5330

Details

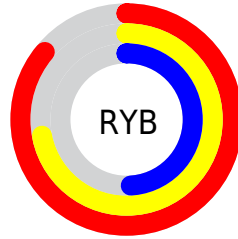
The CIELCh color **71, 32.431, 57.430** is a light color, and the websafe version is hex **CC9966**. A complement of this color would be **72, 25.950, 247.963**, and the grayscale version is **71, 0.009, 296.813**.

A 20% lighter version of the original color is **89, 25.180, 70.949**, and **51, 32.377, 56.764** is the 20% darker color. If you saturate the color by 10%, you get **67, 41.300, 56.666**, and if you desaturate by 10%, it is **75, 24.080, 58.261**.

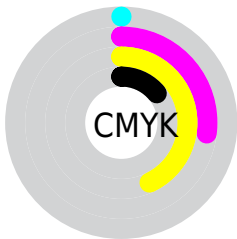
Distribution



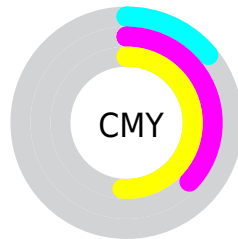
- Red (86%)
- Green (63%)
- Blue (49%)



- Red (86%)
- Yellow (72%)
- Blue (49%)



- Cyan (0%)
- Magenta (27%)
- Yellow (43%)
- Black (14%)



- Cyan (14%)
- Magenta (37%)
- Yellow (51%)


Brightness & Saturation Gradients

These gradients show how the CIELCh color 71, 32.431, 57.430 changes by changing the brightness by 10 percent. The first figure shows a shift by +10% for each color and the second figure -10%.

Similar to the brightness gradients but the following saturation gradients show a change of the CIELCh color 71, 32.431, 57.430 by changing the saturation by 10% instead.

 71, 32.431, 57.430

 71, 32.431, 57.430

 100, 32.431,
57.430

 61, 32.431, 57.430

 91, 32.431, 57.430

 51, 32.431, 57.430

 41, 32.431, 57.430

 31, 32.431, 57.430

 21, 32.431, 57.430

 11, 32.431, 57.430

 1, 32.431, 57.430

 0, 32.431, 57.430

 71, 32.431, 57.430

 71, 32.431, 57.430

67, 41.300, 56.666

75, 24.080, 58.261

64, 50.605, 55.936

79, 16.258, 59.135

61, 60.112, 55.182

82, 8.940, 60.034

58, 69.283, 54.231

86, 2.085, 60.801

55, 77.063, 52.709

91, 4.354, 242.110

53, 81.301, 51.349

95, 9.784, 238.358

98, 11.802,
198.718

Harmonies

Complementary

The Complementary color scheme is a pair of colors which are on the opposite of each other on the color wheel.



71, 32.431, 57.430



72, 25.950, 247.963

Rectangle

The Rectangle color scheme consists of four colors that form a rectangle on the color wheel.



71, 32.431, 57.430



71, 32.431, 107.430



71, 32.431, 237.430



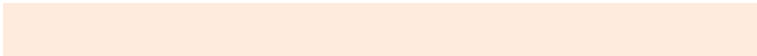
71, 32.431, 287.430

Sweetspot

The Sweet Spot groups the original color and five complimentary colors.



71, 32.430, 57.435



94, 9.937, 60.040



64, 47.244, 340.747



49, 7.005, 59.840



0, 0.000, 0.000



53, 0.007, 296.813

Same Dimension

The Same Dimension uses a secret algorithm to generate beautiful new colors.



71, 32.430, 57.435



78, 45.409, 56.721



83, 42.941, 99.343



44, 3.793, 60.364



42, 67.696, 51.967



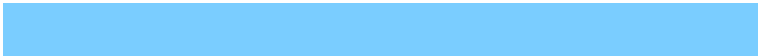
9, 18.866, 46.337

Inverse Universe

The Inverse Universe completely reimagines the original color for something new.



72, 25.950, 247.963



79, 34.348, 250.305



60, 46.549, 290.661



44, 3.643, 242.411



44, 42.168, 269.083



9, 15.027, 258.383

Previews

White Background



This preview shows how the CIELCh color 71, 32.431, 57.430 looks on a white background.

Color Contrast Check

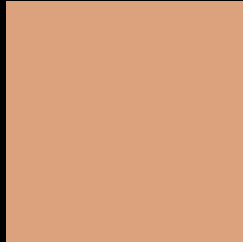
Large Text (above 18pt) WCAG AA × Fail

Any Text WCAG AA × Fail

Large Text (above 18pt) WCAG AAA × Fail

Any Text WCAG AAA × Fail

Black Background



This preview shows how the CIELCh color 71, 32.431, 57.430 looks on a black background.

Color Contrast Check

Large Text (above 18pt) WCAG AA ✓ Pass

Any Text WCAG AA ✓ Pass

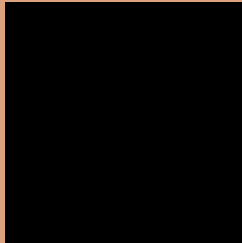
Large Text (above 18pt) WCAG AAA ✓ Pass

Any Text WCAG AAA ✓ Pass

If you want to check with other color combinations, try the [Color Contrast Checker](#).

CIELCh 71, 32.431, 57.430

Background



This preview shows how black text looks on a background with the CIELCh color 71, 32.431, 57.430.



This preview shows how white text looks on a background with the CIELCh color 71, 32.431, 57.430.

Color Blindness Simulation

Color vision deficiency is a very complex topic, and I could not describe the different causes any better than Wikipedia does, so if you want to learn more, you should check out their [article about color blindness](#).

Dichromacy



Original Color


71, 32.431, 57.430

Protanopia

71, 23.792, 95.812

Deuteranopia

71, 29.174, 72.251



Tritanopia
71, 27.744, 8.700

Trichromacy



Original Color
71, 32.431, 57.430

Protanomaly
71, 25.040, 78.970

Deuteranomaly
71, 30.348, 66.735

Tritanomaly
71, 27.011, 27.521

Monochromacy



Original Color
71, 32.431, 57.430

Achromatopsia
71, 0.009, 296.813

Achromatomaly
71, 10.929, 60.023

CSS Examples

Text

The CSS property to change the color of the text to CIELCh 71, 32.431, 57.430 is called "color". The color property can be set on classes, ids or directly on the HTML element.

This example shows how text in the color `rgb(220, 161, 125)` looks like.

```
.text, #text, p{  
    color:rgb(220, 161, 125)  
}
```

If you want to add a text shadow in that color use the text-shadow property, you can generate a text shadow directly with our [CSS Text Shadow Generator](#).

Here you see how black text with a 4 pixel rgb(220, 161, 125) colored shadow looks like.

```
.shadow{ text-shadow: 4px 4px 2px rgb(220, 161, 125) }
```

Border

The CSS property to change the border of an element to CIELCh 71, 32.431, 57.430 is called "border". The border property can be set on classes, ids or directly on the HTML element.

This example shows the color as border, it can be applied via the CSS property "border" or "border-color".

```
.border, #border, table{ border:4px solid rgb(220, 161, 125) }
```

If only the border color should be changed use the property `border-color`.

```
.border{ border-color:rgb(220, 161, 125) }
```

If you want to add a box shadow in that color use:

Here you see how a box with a 4 pixel `rgb(220, 161, 125)` colored shadow looks like.

```
.boxshadow{ -moz-box-shadow:4px 4px 4px 4px rgb(220, 161, 125); -webkit-box-shadow:4px 4px 4px 4px rgb(220, 161, 125); box-shadow:4px 4px 4px 4px rgb(220, 161, 125) }
```

Background

The CSS property to change the background color of an element to CIELCh 71, 32.431, 57.430 is called "background". The background property can be set on classes, ids or directly on the HTML element.

```
.background, #background, body{  
background: rgb(220, 161, 125) }
```

If only the background color should be changed can be used:

```
.background{ background-color: rgb(220,  
161, 125) }
```

This example shows the color as background, it is applied via the CSS property "background".

To optimize and compress your CSS code, you can use our [online CSS compressor and optimizer](#) based on csstidy. If you want to create a linear or radial gradient as background or border, check our [CSS Gradient Generator](#).

Hey! You found this booklet interesting? Support Converting Colors with the new Membership Option!

The pro membership hides all ads, plus gives you double the colors in the color bucket, and more awesome pro features!

[Learn more, Memberships starting at \\$2.50/m!](#)

**Follow me
on Twitter!**

@ConvertingColor