

Converting Colors

CIELCh(71, 40.296, 2.198)

Have a look what the booklet for
CIELCh(71, 40.296, 2.198) contains.

CIELCh(71, 40.235, 2.702)	3
<i>Conversions</i>	4
<i>Details</i>	6
<i>Harmonies</i>	11
<i>Previews</i>	20
<i>Color Blindness Simulation</i>	23
<i>CSS Examples</i>	26

Color

CIELCh(71, 40.235, 2.702)

Conversions

Conversions Part 1

Format	Color
Hex	F391AC
RGB	243, 145, 172
RGB Percent	95%, 57%, 67%
CMY	0.0478, 0.4320, 0.3262
CMYK	0.00, 0.40, 0.29, 0.05
HSL	343°, 80%, 76%
HSV	343°, 40%, 95%
XYZ	54.4214, 42.1875, 44.2144
YIQ	177.3800, 49.7410, 29.1730

Conversions

Conversions Part 2

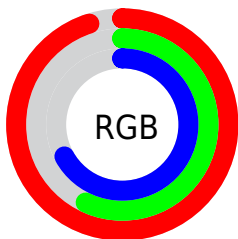
Format	Color
R_{YB}	243, 145, 172
Decimal	15962540
CIE Lab	71.00, 40.19, 1.90
CIE LCh	71, 40.235, 2.702
Yxy	42.1875, 0.3865, 0.2996
Android (android.graphics.Color)	4294152620 (0xFFFF391AC)
YUV	177.3800, -2.6523, 57.5487
Hunter-Lab	64.9519, 35.8944, 5.1061

Details

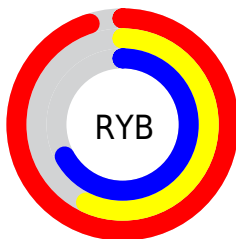
The CIELCh color $71, 40.235, 2.702$ is a light color, and the websafe version is hex `FF99CC`. A complement of this color would be $89, 35.188, 173.509$, and the grayscale version is $72, 0.009, 296.813$.

A 20% lighter version of the original color is $86, 24.378, 346.084$, and $51, 40.562, 2.569$ is the 20% darker color. If you saturate the color by 10%, you get $66, 50.407, 4.664$, and if you desaturate by 10%, it is $77, 29.902, 1.108$.

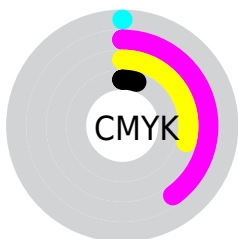
Distribution



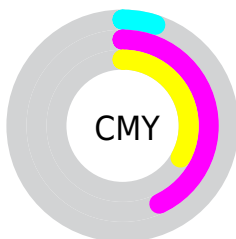
- Red (95%)
- Green (57%)
- Blue (67%)



- Red (95%)
- Yellow (57%)
- Blue (67%)



- Cyan (0%)
- Magenta (40%)
- Yellow (29%)
- Black (5%)




- Cyan (5%)
- Magenta (43%)
- Yellow (33%)

Brightness & Saturation Gradients

These gradients show how the CIELCh color 71, 40.235, 2.702 changes by changing the brightness by 10 percent. The first figure shows a shift by +10% for each color and the second figure -10%.

Similar to the brightness gradients but the following saturation gradients show a change of the CIELCh color 71, 40.235, 2.702 by changing the saturation by 10% instead.

 71, 40.235, 2.702  71, 40.235, 2.702

 100, 40.235, 2.702  61, 40.235, 2.702

 91, 40.235, 2.702  51, 40.235, 2.702

 41, 40.235, 2.702

 31, 40.235, 2.702

 21, 40.235, 2.702

 11, 40.235, 2.702

 1, 40.235, 2.702

 0, 40.235, 2.702

 71, 40.235, 2.702  71, 40.235, 2.702

66, 50.407, 4.664

77, 29.902, 1.108

61, 60.031, 7.116

83, 19.704,
359.775

57, 68.643, 10.225

89, 9.816, 358.624

54, 75.861, 14.162

96, 0.331, 356.016

52, 81.582, 19.024

99, 4.208, 199.296

51, 86.137, 24.363

Harmonies

Complementary

The Complementary color scheme is a pair of colors which are on the opposite of each other on the color wheel.



71, 40.235, 2.702



89, 35.188, 173.509

Rectangle

The Rectangle color scheme consists of four colors that form a rectangle on the color wheel.



71, 40.235, 2.702



71, 40.235, 52.702



71, 40.235, 182.702



71, 40.235, 232.702

Sweetspot

The Sweet Spot groups the original color and five complimentary colors.



71, 40.232, 2.704



92, 11.883, 358.809



70, 57.950, 317.990



48, 7.904, 358.955



0, 0.000, 0.000



53, 0.007, 296.813

Same Dimension

The Same Dimension uses a secret algorithm to generate beautiful new colors.



71, 40.232, 2.704



70, 49.996, 4.190



75, 34.231, 41.032



48, 5.415, 358.530



39, 70.101, 23.321



9, 29.739, 12.720

Inverse Universe

The Inverse Universe completely reimagines the original color for something new.



71, 40.232, 2.704



70, 49.996, 4.190



84, 25.579, 224.161



48, 5.415, 358.530



39, 70.101, 23.321



9, 29.739, 12.720

Previews

White Background



This preview shows how the CIELCh color 71, 40.235, 2.702 looks on a white background.

Color Contrast Check

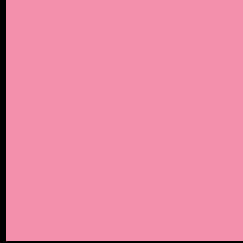
Large Text (above 18pt) WCAG AA × Fail

Any Text WCAG AA × Fail

Large Text (above 18pt) WCAG AAA × Fail

Any Text WCAG AAA × Fail

Black Background



This preview shows how the CIELCh color 71, 40.235, 2.702 looks on a black background.

Color Contrast Check

Large Text (above 18pt) WCAG AA ✓ Pass

Any Text WCAG AA ✓ Pass

Large Text (above 18pt) WCAG AAA ✓ Pass

Any Text WCAG AAA ✓ Pass

If you want to check with other color combinations, try the [Color Contrast Checker](#).

CIELCh 71, 40.235, 2.702

Background



This preview shows how black text looks on a background with the CIELCh color 71, 40.235, 2.702.



This preview shows how white text looks on a background with the CIELCh color 71, 40.235, 2.702.

Color Blindness Simulation

Color vision deficiency is a very complex topic, and I could not describe the different causes any better than Wikipedia does, so if you want to learn more, you should check out their [article about color blindness](#).

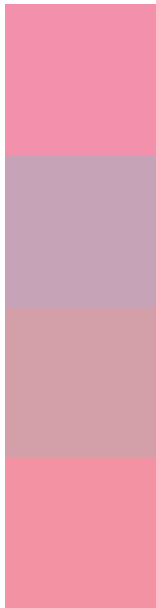
Dichromacy





Tritanopia
71, 37.871, 14.392

Trichromacy



Original Color
71, 40.235, 2.702

Protanomaly
71, 16.766, 342.854

Deuteranomaly
71, 20.418, 7.569

Tritanomaly
71, 38.756, 9.939

Monochromacy



Original Color
71, 40.235, 2.702

Achromatopsia
72, 0.009, 296.813

Achromatomaly
71, 14.810, 359.296

CSS Examples

Text

The CSS property to change the color of the text to CIELCh 71, 40.235, 2.702 is called "color". The color property can be set on classes, ids or directly on the HTML element.

This example shows how text in the color `rgb(243, 145, 172)` looks like.

```
.text, #text, p{  
    color:rgb(243, 145, 172)  
}
```

If you want to add a text shadow in that color use the text-shadow property, you can generate a text shadow directly with our [CSS Text Shadow Generator](#).

Here you see how black text with a 4 pixel rgb(243, 145, 172) colored shadow looks like.

```
.shadow{ text-shadow: 4px 4px 2px rgb(243, 145, 172) }
```

Border

The CSS property to change the border of an element to CIELCh 71, 40.235, 2.702 is called "border". The border property can be set on classes, ids or directly on the HTML element.

This example shows the color as border, it can be applied via the CSS property "border" or "border-color".

```
.border, #border, table{ border:4px solid rgb(243, 145, 172) }
```

If only the border color should be changed use the property `border-color`.

```
.border{ border-color:rgb(243, 145, 172) }
```

If you want to add a box shadow in that color use:

Here you see how a box with a 4 pixel `rgb(243, 145, 172)` colored shadow looks like.

```
.boxshadow{ -moz-box-shadow:4px 4px 4px  
4px rgb(243, 145, 172); -webkit-box-  
shadow:4px 4px 4px 4px rgb(243, 145, 172);  
box-shadow:4px 4px 4px 4px rgb(243, 145,  
172) }
```

Background

The CSS property to change the background color of an element to CIELCh 71, 40.235, 2.702 is called "background". The background property can be set on classes, ids or directly on the HTML element.

```
.background, #background, body{  
background: rgb(243, 145, 172) }
```

If only the background color should be changed can be used:

```
.background{ background-color: rgb(243,  
145, 172) }
```

This example shows the color as background, it is applied via the CSS property "background".

To optimize and compress your CSS code, you can use our [online CSS compressor and optimizer](#) based on csstidy. If you want to create a linear or radial gradient as background or border, check our [CSS Gradient Generator](#).

Hey! You found this booklet interesting? Support Converting Colors with the new Membership Option!

The pro membership hides all ads, plus gives you double the colors in the color bucket, and more awesome pro features!

[Learn more, Memberships starting at \\$2.50/m!](#)

**Follow me
on Twitter!**

@ConvertingColor