

Converting Colors

CIELCh(71, 44.044, 7.268)

Have a look what the booklet for
CIELCh(71, 44.044, 7.268) contains.

CIELCh(71, 44.178, 7.434)	3
<i>Conversions</i>	4
<i>Details</i>	6
<i>Harmonies</i>	11
<i>Previews</i>	20
<i>Color Blindness Simulation</i>	23
<i>CSS Examples</i>	26

Color

CIELCh(71, 44.178, 7.434)

Conversions

Conversions Part 1

Format	Color
Hex	FA8DA5
RGB	250, 141, 165
RGB Percent	98%, 55%, 65%
CMY	0.0188, 0.4463, 0.3522
CMYK	0.00, 0.44, 0.34, 0.02
HSL	347°, 92%, 77%
HSV	347°, 44%, 98%
XYZ	55.8559, 42.1875, 40.8814
YIQ	176.3270, 57.2600, 30.5720

Conversions

Conversions Part 2

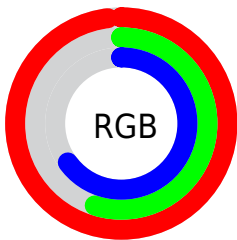
Format	Color
R _Y B	250, 141, 165
Decimal	16420261
CIE Lab	71.00, 43.81, 5.72
CIE LCh	71, 44.178, 7.434
Yxy	42.1875, 0.4021, 0.3037
Android (android.graphics.Color)	4294610341 (0xFFFA8DA5)
YUV	176.3270, -5.5842, 64.6112
Hunter-Lab	64.9519, 39.8367, 8.1486

Details

The CIELCh color **71, 44.178, 7.434** is a light color, and the websafe version is hex **FF9999**. A complement of this color would be **92, 37.003, 177.344**, and the grayscale version is **72, 0.009, 296.813**.

A 20% lighter version of the original color is **85, 24.927, 351.283**, and **51, 44.236, 7.777** is the 20% darker color. If you saturate the color by 10%, you get **66, 54.652, 9.631**, and if you desaturate by 10%, it is **77, 33.554, 5.677**.

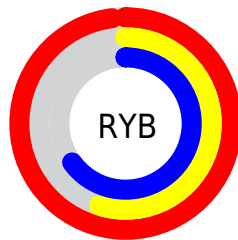
Distribution



Red (98%)

Green (55%)

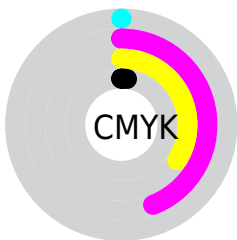
Blue (65%)



Red (98%)

Yellow (55%)

Blue (65%)

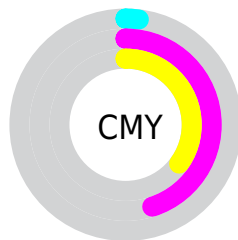


Cyan (0%)

Magenta (44%)

Yellow (34%)

Black (2%)



Cyan (2%)

Magenta (45%)

Yellow (35%)

Brightness & Saturation Gradients

These gradients show how the CIELCh color 71, 44.178, 7.434 changes by changing the brightness by 10 percent. The first figure shows a shift by +10% for each color and the second figure -10%.

Similar to the brightness gradients but the following saturation gradients show a change of the CIELCh color 71, 44.178, 7.434 by changing the saturation by 10% instead.

 71, 44.178, 7.434

 71, 44.178, 7.434

 100, 44.178, 7.434

 61, 44.178, 7.434

 91, 44.178, 7.434

 51, 44.178, 7.434

 41, 44.178, 7.434

 31, 44.178, 7.434

 21, 44.178, 7.434

 11, 44.178, 7.434

 1, 44.178, 7.434

 0, 44.178, 7.434

 71, 44.178, 7.434

 71, 44.178, 7.434

66, 54.652, 9.631

77, 33.554, 5.677

61, 64.578, 12.408

83, 23.094, 4.237

57, 73.523, 15.931

89, 12.986, 3.025

55, 81.187, 20.322

96, 3.333, 1.881

53, 87.578, 25.533

100, 1.666,
199.697

53, 91.281, 29.043

Harmonies

Complementary

The Complementary color scheme is a pair of colors which are on the opposite of each other on the color wheel.



71, 44.178, 7.434



92, 37.003, 177.344

Rectangle

The Rectangle color scheme consists of four colors that form a rectangle on the color wheel.



71, 44.178, 7.434



71, 44.178, 57.434



71, 44.178, 187.434



71, 44.178, 237.434

Sweetspot

The Sweet Spot groups the original color and five complimentary colors.



71, 44.175, 7.437



91, 12.616, 2.962



71, 64.584, 319.678



47, 8.876, 3.213



0, 0.000, 0.000



53, 0.007, 296.813

Same Dimension

The Same Dimension uses a secret algorithm to generate beautiful new colors.



71, 44.175, 7.437



68, 53.855, 9.264



77, 37.453, 45.901



49, 5.379, 2.574



39, 73.208, 27.998



9, 30.895, 16.767

Inverse Universe

The Inverse Universe completely reimagines the original color for something new.



71, 44.175, 7.437



68, 53.855, 9.264



84, 27.740, 231.899



49, 5.379, 2.574



39, 73.208, 27.998



9, 30.895, 16.767

Previews

White Background



This preview shows how the CIELCh color 71, 44.178, 7.434 looks on a white background.

Color Contrast Check

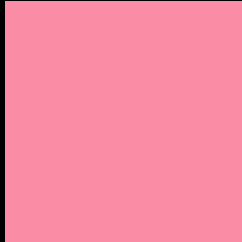
Large Text (above 18pt) WCAG AA × Fail

Any Text WCAG AA × Fail

Large Text (above 18pt) WCAG AAA × Fail

Any Text WCAG AAA × Fail

Black Background



This preview shows how the CIELCh color 71, 44.178, 7.434 looks on a black background.

Color Contrast Check

Large Text (above 18pt) WCAG AA ✓ Pass

Any Text WCAG AA ✓ Pass

Large Text (above 18pt) WCAG AAA ✓ Pass

Any Text WCAG AAA ✓ Pass

If you want to check with other color combinations, try the [Color Contrast Checker](#).

CIELCh 71, 44.178, 7.434

Background



This preview shows how black text looks on a background with the CIELCh color 71, 44.178, 7.434.



This preview shows how white text looks on a background with the CIELCh color 71, 44.178, 7.434.

Color Blindness Simulation

Color vision deficiency is a very complex topic, and I could not describe the different causes any better than Wikipedia does, so if you want to learn more, you should check out their [article about color blindness](#).

Dichromacy



Original Color

71, 44.178, 7.434

Protanopia

71, 5.525, 298.366

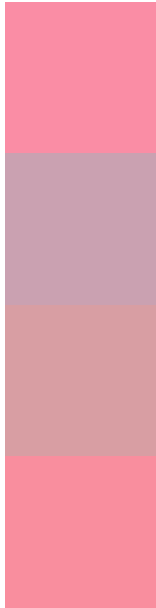
Deuteranopia

71, 11.683, 39.168



Tritanopia
71, 42.834, 16.068

Trichromacy



Original Color
71, 44.178, 7.434

Protanomaly
70, 17.869, 351.973

Deuteranomaly
71, 23.059, 14.883

Tritanomaly
71, 43.176, 12.667

Monochromacy



Original Color
71, 44.178, 7.434

Achromatopsia
72, 0.009, 296.813

Achromatomaly
71, 16.148, 3.340

CSS Examples

Text

The CSS property to change the color of the text to CIELCh 71, 44.178, 7.434 is called "color". The color property can be set on classes, ids or directly on the HTML element.

This example shows how text in the color `rgb(250, 141, 165)` looks like.

```
.text, #text, p{  
    color:rgb(250, 141, 165)  
}
```

If you want to add a text shadow in that color use the text-shadow property, you can generate a text shadow directly with our [CSS Text Shadow Generator](#).

Here you see how black text with a 4 pixel rgb(250, 141, 165) colored shadow looks like.

```
.shadow{ text-shadow: 4px 4px 2px rgb(250, 141, 165) }
```

Border

The CSS property to change the border of an element to CIELCh 71, 44.178, 7.434 is called "border". The border property can be set on classes, ids or directly on the HTML element.

This example shows the color as border, it can be applied via the CSS property "border" or "border-color".

```
.border, #border, table{ border:4px solid rgb(250, 141, 165) }
```

If only the border color should be changed use the property `border-color`.

```
.border{ border-color:rgb(250, 141, 165) }
```

If you want to add a box shadow in that color use:

Here you see how a box with a 4 pixel `rgb(250, 141, 165)` colored shadow looks like.

```
.boxshadow{ -moz-box-shadow:4px 4px 4px  
4px rgb(250, 141, 165); -webkit-box-  
shadow:4px 4px 4px 4px rgb(250, 141, 165);  
box-shadow:4px 4px 4px 4px rgb(250, 141,  
165) }
```

Background

The CSS property to change the background color of an element to CIELCh 71, 44.178, 7.434 is called "background". The background property can be set on classes, ids or directly on the HTML element.

```
.background, #background, body{  
background: rgb(250, 141, 165) }
```

If only the background color should be changed can be used:

```
.background{ background-color: rgb(250,  
141, 165) }
```

This example shows the color as background, it is applied via the CSS property "background".

To optimize and compress your CSS code, you can use our [online CSS compressor and optimizer](#) based on csstidy. If you want to create a linear or radial gradient as background or border, check our [CSS Gradient Generator](#).

Hey! You found this booklet interesting? Support Converting Colors with the new Membership Option!

The pro membership hides all ads, plus gives you double the colors in the color bucket, and more awesome pro features!

[Learn more, Memberships starting at \\$2.50/m!](#)

**Follow me
on Twitter!**

@ConvertingColor