

Converting Colors

CIELCh(71, 6.071, 26.990)

Have a look what the booklet for
CIELCh(71, 6.071, 26.990) contains.

CIELCh(71, 6.161, 24.908)	3
<i>Conversions</i>	4
<i>Details</i>	6
<i>Harmonies</i>	11
<i>Previews</i>	20
<i>Color Blindness Simulation</i>	23
<i>CSS Examples</i>	26

Color

CIELCh(71, 6.161, 24.908)

Conversions

Conversions Part 1

Format	Color
Hex	BAAAA9
RGB	186, 170, 169
RGB Percent	73%, 67%, 66%
CMY	0.2696, 0.3323, 0.3363
CMYK	0.00, 0.09, 0.09, 0.27
HSL	4°, 11%, 70%
HSV	4°, 9%, 73%
XYZ	41.9173, 42.1875, 43.5922
YIQ	174.6700, 9.8570, 3.0810

Conversions

Conversions Part 2

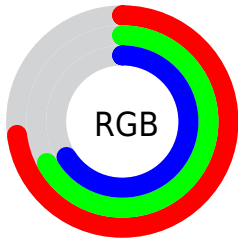
Format	Color
RYB	186, 170, 169
Decimal	12233385
CIELab	71.00, 5.59, 2.59
CIElCh	71, 6.161, 24.908
Yxy	42.1875, 0.3283, 0.3304
Android (android.graphics.Color)	4290423465 (0xFFBAAA9)
YUV	174.6700, -2.7953, 9.9364
Hunter-Lab	64.9519, 1.5308, 5.6741

Details

The CIELCh color $71, 6.161, 24.908$ is a light color, and the websafe version is hex 999999 . A complement of this color would be $74, 5.812, 204.410$, and the grayscale version is $71, 0.009, 296.813$.

A 20% lighter version of the original color is $91, 6.189, 24.520$, and $51, 6.210, 25.384$ is the 20% darker color. If you saturate the color by 10%, you get $66, 13.439, 25.536$, and if you desaturate by 10%, it is $76, 0.564, 205.535$.

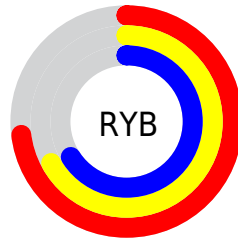
Distribution



Red (73%)

Green (67%)

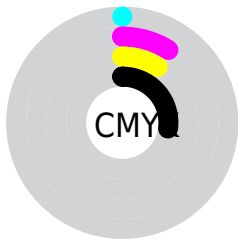
Blue (66%)



Red (73%)

Yellow (67%)

Blue (66%)

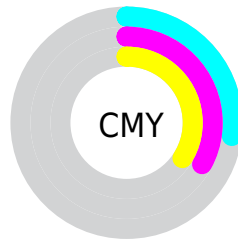


Cyan (0%)

Magenta (9%)

Yellow (9%)

Black (27%)



Cyan (27%)

Magenta (33%)

Yellow (34%)

Brightness & Saturation Gradients


These gradients show how the CIELCh color 71, 6.161, 24.908 changes by changing the brightness by 10 percent. The first figure shows a shift by +10% for each color and the second figure -10%.

Similar to the brightness gradients but the following saturation gradients show a change of the CIELCh color 71, 6.161, 24.908 by changing the saturation by 10% instead.

 71, 6.161, 24.908

 71, 6.161, 24.908

 100, 6.161, 24.908

 61, 6.161, 24.908

 91, 6.161, 24.908

 51, 6.161, 24.908

 41, 6.161, 24.908

 31, 6.161, 24.908

 21, 6.161, 24.908

 11, 6.161, 24.908

 1, 6.161, 24.908

 0, 6.161, 24.908

 71, 6.161, 24.908

 71, 6.161, 24.908

66, 13.439, 25.536

76, 0.564, 205.535

61, 21.300, 26.316

81, 6.775, 204.380

57, 29.733, 27.353

86, 12.525,
204.134

52, 38.680, 28.728

91, 17.864,
203.975

48, 48.006, 30.521

45, 57.485, 32.783

96, 22.195,
198.050

42, 66.738, 35.449

40, 75.026, 38.151

39, 81.246, 40.364

Harmonies

Complementary

The Complementary color scheme is a pair of colors which are on the opposite of each other on the color wheel.



71, 6.161, 24.908



74, 5.812, 204.410

Rectangle

The Rectangle color scheme consists of four colors that form a rectangle on the color wheel.



71, 6.161, 24.908



71, 6.161, 74.908



71, 6.161, 204.908



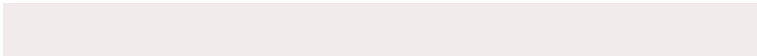
71, 6.161, 254.908

Sweetspot

The Sweet Spot groups the original color and five complimentary colors.



71, 6.160, 24.926



94, 2.446, 24.483



71, 10.888, 326.291



50, 1.875, 24.571



98, 0.011, 296.813



51, 0.007, 296.813

Same Dimension

The Same Dimension uses a secret algorithm to generate beautiful new colors.



71, 6.160, 24.926



89, 9.265, 25.044



73, 5.831, 79.445



37, 3.868, 24.939



33, 72.001, 40.493



3, 11.763, 22.954

Inverse Universe

The Inverse Universe completely reimagines the original color for something new.



74, 5.812, 204.410



93, 8.623, 204.332



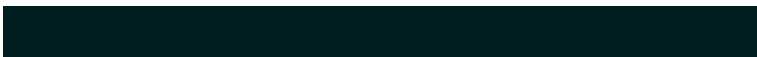
72, 5.751, 261.888



39, 3.644, 204.400



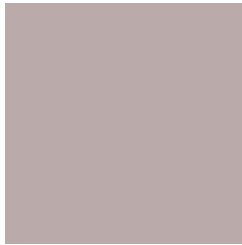
56, 32.489, 206.188



9, 10.772, 204.603

Previews

White Background



This preview shows how the CIELCh color 71, 6.161, 24.908 looks on a white background.

Color Contrast Check

Large Text (above 18pt) WCAG AA × Fail

Any Text WCAG AA × Fail

Large Text (above 18pt) WCAG AAA × Fail

Any Text WCAG AAA × Fail

Black Background



This preview shows how the CIELCh color 71, 6.161, 24.908 looks on a black background.

Color Contrast Check

Large Text (above 18pt) WCAG AA ✓ Pass

Any Text WCAG AA ✓ Pass

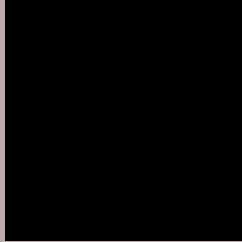
Large Text (above 18pt) WCAG AAA ✓ Pass

Any Text WCAG AAA ✓ Pass

If you want to check with other color combinations, try the [Color Contrast Checker](#).

CIELCh 71, 6.161, 24.908

Background



This preview shows how black text looks on a background with the CIELCh color 71, 6.161, 24.908.



This preview shows how white text looks on a background with the CIELCh color 71, 6.161, 24.908.

Color Blindness Simulation

Color vision deficiency is a very complex topic, and I could not describe the different causes any better than Wikipedia does, so if you want to learn more, you should check out their [article about color blindness](#).

Dichromacy



Original Color

71, 6.161, 24.908

Protanopia

71, 2.173, 49.343

Deuteranopia

71, 9.301, 13.489



Tritanopia
71, 10.731, 334.978

Trichromacy



Original Color
71, 6.161, 24.908

Protanomaly
71, 3.589, 37.179

Deuteranomaly
71, 8.089, 16.215

Tritanomaly
71, 8.100, 347.546

Monochromacy



Original Color
71, 6.161, 24.908

Achromatopsia
71, 0.009, 296.813

Achromatomaly
71, 2.267, 19.381

CSS Examples

Text

The CSS property to change the color of the text to CIELCh 71, 6.161, 24.908 is called "color". The color property can be set on classes, ids or directly on the HTML element.

This example shows how text in the color `rgb(186, 170, 169)` looks like.

```
.text, #text, p{  
    color:rgb(186, 170, 169)  
}
```

If you want to add a text shadow in that color use the text-shadow property, you can generate a text shadow directly with our [CSS Text Shadow Generator](#).

Here you see how black text with a 4 pixel rgb(186, 170, 169) colored shadow looks like.

```
.shadow{ text-shadow: 4px 4px 2px rgb(186, 170, 169) }
```

Border

The CSS property to change the border of an element to CIELCh 71, 6.161, 24.908 is called "border". The border property can be set on classes, ids or directly on the HTML element.

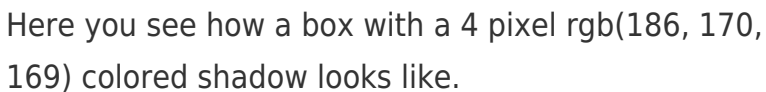
This example shows the color as border, it can be applied via the CSS property "border" or "border-color".

```
.border, #border, table{ border:4px solid rgb(186, 170, 169) }
```

If only the border color should be changed use the property `border-color`.

```
.border{ border-color:rgb(186, 170, 169) }
```

If you want to add a box shadow in that color use:



Here you see how a box with a 4 pixel `rgb(186, 170, 169)` colored shadow looks like.

```
.boxshadow{ -moz-box-shadow:4px 4px 4px 4px rgb(186, 170, 169); -webkit-box-shadow:4px 4px 4px 4px rgb(186, 170, 169); box-shadow:4px 4px 4px 4px rgb(186, 170, 169) }
```

Background

The CSS property to change the background color of an element to CIELCh 71, 6.161, 24.908 is called "background". The background property can be set on classes, ids or directly on the HTML element.

```
.background, #background, body{  
background: rgb(186, 170, 169) }
```

If only the background color should be changed can be used:

```
.background{ background-color: rgb(186,  
170, 169) }
```

This example shows the color as background, it is applied via the CSS property "background".

To optimize and compress your CSS code, you can use our [online CSS compressor and optimizer](#) based on csstidy. If you want to create a linear or radial gradient as background or border, check our [CSS Gradient Generator](#).

Hey! You found this booklet interesting? Support Converting Colors with the new Membership Option!

The pro membership hides all ads, plus gives you double the colors in the color bucket, and more awesome pro features!

[Learn more, Memberships starting at \\$2.50/m!](#)

**Follow me
on Twitter!**

@ConvertingColor