

Converting Colors

CIELCh(71, 6.324, 14.227)

Have a look what the booklet for
CIELCh(71, 6.324, 14.227) contains.

CIELCh(71, 6.140, 14.790)	3
<i>Conversions</i>	4
<i>Details</i>	6
<i>Harmonies</i>	11
<i>Previews</i>	20
<i>Color Blindness Simulation</i>	23
<i>CSS Examples</i>	26

Color

CIELCh(71, 6.140, 14.790)

Conversions

Conversions Part 1

Format	Color
Hex	BAAAAB
RGB	186, 170, 171
RGB Percent	73%, 67%, 67%
CMY	0.2702, 0.3329, 0.3290
CMYK	0.00, 0.09, 0.08, 0.27
HSL	356°, 10%, 70%
HSV	356°, 9%, 73%
XYZ	42.0326, 42.1875, 44.5100
YIQ	174.8980, 9.2150, 3.7030

Conversions

Conversions Part 2

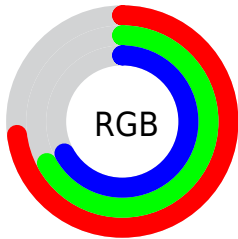
Format	Color
RYB	186, 170, 171
Decimal	12233387
CIELab	71.00, 5.94, 1.57
CIElCh	71, 6.140, 14.790
Yxy	42.1875, 0.3265, 0.3277
Android (android.graphics.Color)	4290423467 (0xFFBAAAAB)
YUV	174.8980, -1.9217, 9.7365
Hunter-Lab	64.9519, 1.8477, 4.8363

Details

The CIELCh color $71, 6.140, 14.790$ is a light color, and the websafe version is hex 999999 . A complement of this color would be $74, 5.854, 193.729$, and the grayscale version is $71, 0.009, 296.813$.

A 20% lighter version of the original color is $91, 6.176, 14.952$, and $51, 6.175, 14.674$ is the 20% darker color. If you saturate the color by 10%, you get $66, 13.751, 15.768$, and if you desaturate by 10%, it is $76, 0.965, 194.677$.

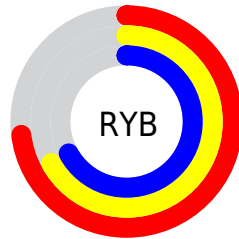
Distribution



Red (73%)

Green (67%)

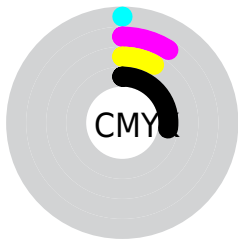
Blue (67%)



Red (73%)

Yellow (67%)

Blue (67%)

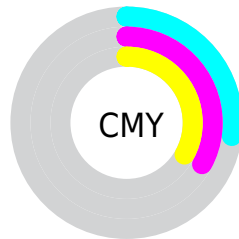


Cyan (0%)

Magenta (9%)

Yellow (8%)

Black (27%)



Cyan (27%)

Magenta (33%)

Yellow (33%)

Brightness & Saturation Gradients

These gradients show how the CIELCh color 71, 6.140, 14.790 changes by changing the brightness by 10 percent. The first figure shows a shift by +10% for each color and the second figure -10%.

Similar to the brightness gradients but the following saturation gradients show a change of the CIELCh color 71, 6.140, 14.790 by changing the saturation by 10% instead.

71, 6.140, 14.790

71, 6.140, 14.790

100, 6.140, 14.790

61, 6.140, 14.790

91, 6.140, 14.790

51, 6.140, 14.790

41, 6.140, 14.790

31, 6.140, 14.790

21, 6.140, 14.790

11, 6.140, 14.790

1, 6.140, 14.790

0, 6.140, 14.790

71, 6.140, 14.790

71, 6.140, 14.790

66, 13.751, 15.768

76, 0.965, 194.677

61, 21.866, 16.924

82, 7.583, 193.596

56, 30.428, 18.376

87, 13.754,
193.050

52, 39.315, 20.225

93, 19.520,
192.601

48, 48.321, 22.592

44, 57.170, 25.589

96, 22.237,
198.047

42, 65.550, 29.253

40, 73.094, 33.384

39, 79.202, 37.192

Harmonies

Complementary

The Complementary color scheme is a pair of colors which are on the opposite of each other on the color wheel.



71, 6.140, 14.790



74, 5.854, 193.729

Rectangle

The Rectangle color scheme consists of four colors that form a rectangle on the color wheel.



71, 6.140, 14.790



71, 6.140, 64.790



71, 6.140, 194.790



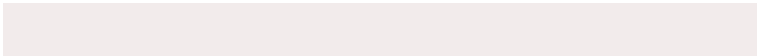
71, 6.140, 244.790

Sweetspot

The Sweet Spot groups the original color and five complimentary colors.



71, 6.138, 14.805



94, 2.604, 14.217



71, 10.380, 323.050



50, 1.995, 14.328



98, 0.011, 296.813



51, 0.007, 296.813

Same Dimension

The Same Dimension uses a secret algorithm to generate beautiful new colors.



71, 6.138, 14.805



89, 8.895, 14.950



73, 5.096, 66.858



36, 4.011, 14.873



32, 69.545, 37.043



2, 10.671, 15.618

Inverse Universe

The Inverse Universe completely reimagines the original color for something new.



71, 6.138, 14.805



89, 8.895, 14.950



73, 4.953, 248.961



36, 4.011, 14.873



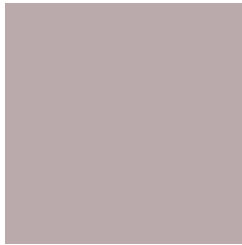
32, 69.545, 37.043



2, 10.671, 15.618

Previews

White Background



This preview shows how the CIELCh color 71, 6.140, 14.790 looks on a white background.

Color Contrast Check

Large Text (above 18pt) WCAG AA × Fail

Any Text WCAG AA × Fail

Large Text (above 18pt) WCAG AAA × Fail

Any Text WCAG AAA × Fail

Black Background



This preview shows how the CIELCh color 71, 6.140, 14.790 looks on a black background.

Color Contrast Check

Large Text (above 18pt) WCAG AA ✓ Pass

Any Text WCAG AA ✓ Pass

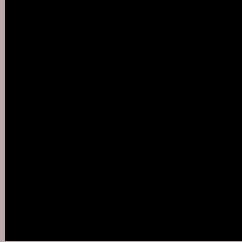
Large Text (above 18pt) WCAG AAA ✓ Pass

Any Text WCAG AAA ✓ Pass

If you want to check with other color combinations, try the [Color Contrast Checker](#).

CIELCh 71, 6.140, 14.790

Background



This preview shows how black text looks on a background with the CIELCh color 71, 6.140, 14.790.



This preview shows how white text looks on a background with the CIELCh color 71, 6.140, 14.790.

Color Blindness Simulation

Color vision deficiency is a very complex topic, and I could not describe the different causes any better than Wikipedia does, so if you want to learn more, you should check out their [article about color blindness](#).

Dichromacy



Original Color

71, 6.140, 14.790

Protanopia

71, 1.509, 19.206

Deuteranopia

71, 8.978, 9.710



Tritanopia
71, 10.731, 334.978

Trichromacy



Original Color
71, 6.140, 14.790

Protanomaly
71, 3.032, 19.503

Deuteranomaly
71, 7.742, 11.970

Tritanomaly
71, 8.399, 344.403

Monochromacy



Original Color
71, 6.140, 14.790

Achromatopsia
71, 0.009, 296.813

Achromatomaly
71, 2.334, 5.911

CSS Examples

Text

The CSS property to change the color of the text to CIELCh 71, 6.140, 14.790 is called "color". The color property can be set on classes, ids or directly on the HTML element.

This example shows how text in the color `rgb(186, 170, 171)` looks like.

```
.text, #text, p{  
    color:rgb(186, 170, 171)  
}
```

If you want to add a text shadow in that color use the text-shadow property, you can generate a text shadow directly with our [CSS Text Shadow Generator](#).

Here you see how black text with a 4 pixel rgb(186, 170, 171) colored shadow looks like.

```
.shadow{ text-shadow: 4px 4px 2px rgb(186, 170, 171) }
```

Border

The CSS property to change the border of an element to CIELCh 71, 6.140, 14.790 is called "border". The border property can be set on classes, ids or directly on the HTML element.

This example shows the color as border, it can be applied via the CSS property "border" or "border-color".

```
.border, #border, table{ border:4px solid rgb(186, 170, 171) }
```

If only the border color should be changed use the property `border-color`.

```
.border{ border-color:rgb(186, 170, 171) }
```

If you want to add a box shadow in that color use:

Here you see how a box with a 4 pixel `rgb(186, 170, 171)` colored shadow looks like.

```
.boxshadow{ -moz-box-shadow:4px 4px 4px  
4px rgb(186, 170, 171); -webkit-box-  
shadow:4px 4px 4px 4px rgb(186, 170, 171);  
box-shadow:4px 4px 4px 4px rgb(186, 170,  
171) }
```

Background

The CSS property to change the background color of an element to CIELCh 71, 6.140, 14.790 is called "background". The background property can be set on classes, ids or directly on the HTML element.

```
.background, #background, body{  
background: rgb(186, 170, 171) }
```

If only the background color should be changed can be used:

```
.background{ background-color: rgb(186,  
170, 171) }
```

This example shows the color as background, it is applied via the CSS property "background".

To optimize and compress your CSS code, you can use our [online CSS compressor and optimizer](#) based on csstidy. If you want to create a linear or radial gradient as background or border, check our [CSS Gradient Generator](#).

Hey! You found this booklet interesting? Support Converting Colors with the new Membership Option!

The pro membership hides all ads, plus gives you double the colors in the color bucket, and more awesome pro features!

[Learn more, Memberships starting at \\$2.50/m!](#)

**Follow me
on Twitter!**

@ConvertingColor