

Converting Colors

CIELCh(71, 6.600, 16.869)

Have a look what the booklet for
CIELCh(71, 6.600, 16.869) contains.

CIELCh(71, 6.515, 19.897)	3
<i>Conversions</i>	4
<i>Details</i>	6
<i>Harmonies</i>	11
<i>Previews</i>	20
<i>Color Blindness Simulation</i>	23
<i>CSS Examples</i>	26

Color

CIELCh(71, 6.515, 19.897)

Conversions

Conversions Part 1

Format	Color
Hex	BBAAAA
RGB	187, 170, 170
RGB Percent	73%, 67%, 67%
CMY	0.2669, 0.3335, 0.3335
CMYK	0.00, 0.09, 0.09, 0.27
HSL	0°, 11%, 70%
HSV	0°, 9%, 73%
XYZ	42.0954, 42.1875, 43.9280
YIQ	175.0830, 10.1320, 3.6040

Conversions

Conversions Part 2

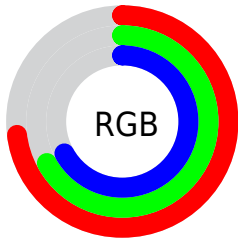
Format	Color
R _Y B	187, 170, 170
Decimal	12298922
CIE Lab	71.00, 6.13, 2.22
CIE LCh	71, 6.515, 19.897
Yxy	42.1875, 0.3283, 0.3290
Android (android.graphics.Color)	4290489002 (0xFFBBAAAA)
YUV	175.0830, -2.5059, 10.4512
Hunter-Lab	64.9519, 2.0202, 5.3676

Details

The CIELCh color **71, 6.515, 19.897** is a light color, and the websafe version is hex **999999**. A complement of this color would be **75, 6.154, 199.016**, and the grayscale version is **71, 0.009, 296.813**.

A 20% lighter version of the original color is **91, 6.528, 19.773**, and **51, 6.584, 20.096** is the 20% darker color. If you saturate the color by 10%, you get **66, 14.222, 20.747**, and if you desaturate by 10%, it is **76, 0.624, 200.219**.

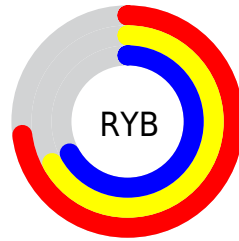
Distribution



Red (73%)

Green (67%)

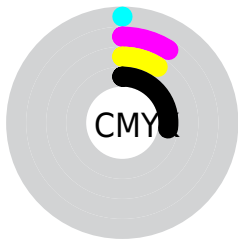
Blue (67%)



Red (73%)

Yellow (67%)

Blue (67%)

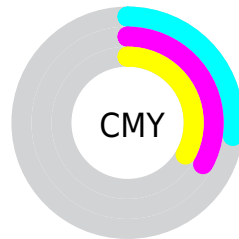


Cyan (0%)

Magenta (9%)

Yellow (9%)

Black (27%)



Cyan (27%)

Magenta (33%)

Yellow (33%)

Brightness & Saturation Gradients

These gradients show how the CIELCh color 71, 6.515, 19.897 changes by changing the brightness by 10 percent. The first figure shows a shift by +10% for each color and the second figure -10%.

Similar to the brightness gradients but the following saturation gradients show a change of the CIELCh color 71, 6.515, 19.897 by changing the saturation by 10% instead.

 71, 6.515, 19.897

 71, 6.515, 19.897

 100, 6.515, 19.897

 61, 6.515, 19.897

 91, 6.515, 19.897

 51, 6.515, 19.897

 41, 6.515, 19.897

 31, 6.515, 19.897

 21, 6.515, 19.897

 11, 6.515, 19.897

 1, 6.515, 19.897

 0, 6.515, 19.897

 71, 6.515, 19.897

 71, 6.515, 19.897

66, 14.222, 20.747

76, 0.624, 200.219

61, 22.511, 21.785

82, 7.227, 198.967

56, 31.343, 23.130

87, 13.344,
198.549

51, 40.612, 24.882

93, 19.030,
198.228

47, 50.124, 27.150

44, 59.592, 30.012

96, 21.994,
198.062

41, 68.616, 33.408

40, 76.486, 36.908

39, 82.263, 39.727

Harmonies

Complementary

The Complementary color scheme is a pair of colors which are on the opposite of each other on the color wheel.



71, 6.515, 19.897



75, 6.154, 199.016

Rectangle

The Rectangle color scheme consists of four colors that form a rectangle on the color wheel.



71, 6.515, 19.897



71, 6.515, 69.897



71, 6.515, 199.897



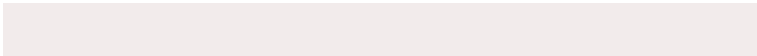
71, 6.515, 249.897

Sweetspot

The Sweet Spot groups the original color and five complimentary colors.



71, 6.514, 19.913



94, 2.591, 19.358



71, 11.253, 324.913



50, 1.986, 19.459



98, 0.011, 296.813



51, 0.007, 296.813

Same Dimension

The Same Dimension uses a secret algorithm to generate beautiful new colors.



71, 6.514, 19.913



88, 9.806, 20.077



73, 5.617, 74.262



37, 4.095, 19.934



32, 72.800, 39.667



3, 12.250, 19.416

Inverse Universe

The Inverse Universe completely reimagines the original color for something new.



75, 6.154, 199.016



94, 9.141, 198.892



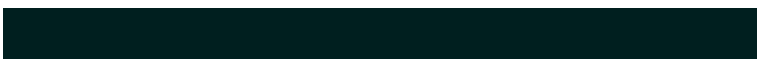
72, 5.501, 256.649



39, 3.863, 199.000



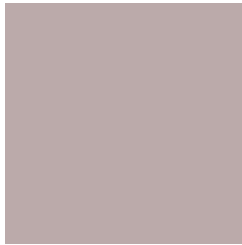
59, 35.050, 196.416



9, 11.660, 196.763

Previews

White Background



This preview shows how the CIELCh color 71, 6.515, 19.897 looks on a white background.

Color Contrast Check

Large Text (above 18pt) WCAG AA × Fail

Any Text WCAG AA × Fail

Large Text (above 18pt) WCAG AAA × Fail

Any Text WCAG AAA × Fail

Black Background



This preview shows how the CIELCh color 71, 6.515, 19.897 looks on a black background.

Color Contrast Check

Large Text (above 18pt) WCAG AA ✓ Pass

Any Text WCAG AA ✓ Pass

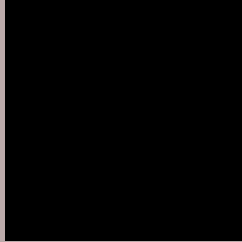
Large Text (above 18pt) WCAG AAA ✓ Pass

Any Text WCAG AAA ✓ Pass

If you want to check with other color combinations, try the [Color Contrast Checker](#).

CIELCh 71, 6.515, 19.897

Background



This preview shows how black text looks on a background with the CIELCh color 71, 6.515, 19.897.



This preview shows how white text looks on a background with the CIELCh color 71, 6.515, 19.897.

Color Blindness Simulation

Color vision deficiency is a very complex topic, and I could not describe the different causes any better than Wikipedia does, so if you want to learn more, you should check out their [article about color blindness](#).

Dichromacy



Original Color

71, 6.515, 19.897

Protanopia

71, 1.599, 39.110

Deuteranopia

71, 9.301, 13.489



Tritanopia
71, 10.632, 338.544

Trichromacy



Original Color
71, 6.515, 19.897

Protanomaly
71, 3.460, 28.589

Deuteranomaly
71, 8.089, 16.215

Tritanomaly
71, 8.423, 348.988

Monochromacy



Original Color
71, 6.515, 19.897

Achromatopsia
71, 0.009, 296.813

Achromatomaly
71, 2.267, 19.381

CSS Examples

Text

The CSS property to change the color of the text to CIELCh 71, 6.515, 19.897 is called "color". The color property can be set on classes, ids or directly on the HTML element.

This example shows how text in the color `rgb(187, 170, 170)` looks like.

```
.text, #text, p{  
    color:rgb(187, 170, 170)  
}
```

If you want to add a text shadow in that color use the text-shadow property, you can generate a text shadow directly with our [CSS Text Shadow Generator](#).

Here you see how black text with a 4 pixel rgb(187, 170, 170) colored shadow looks like.

```
.shadow{ text-shadow: 4px 4px 2px rgb(187, 170, 170) }
```

Border

The CSS property to change the border of an element to CIELCh 71, 6.515, 19.897 is called "border". The border property can be set on classes, ids or directly on the HTML element.

This example shows the color as border, it can be applied via the CSS property "border" or "border-color".

```
.border, #border, table{ border:4px solid rgb(187, 170, 170) }
```

If only the border color should be changed use the property `border-color`.

```
.border{ border-color:rgb(187, 170, 170) }
```

If you want to add a box shadow in that color use:

Here you see how a box with a 4 pixel `rgb(187, 170, 170)` colored shadow looks like.

```
.boxshadow{ -moz-box-shadow:4px 4px 4px  
4px rgb(187, 170, 170); -webkit-box-  
shadow:4px 4px 4px 4px rgb(187, 170, 170);  
box-shadow:4px 4px 4px 4px rgb(187, 170,  
170) }
```

Background

The CSS property to change the background color of an element to CIELCh 71, 6.515, 19.897 is called "background". The background property can be set on classes, ids or directly on the HTML element.

```
.background, #background, body{  
background: rgb(187, 170, 170) }
```

If only the background color should be changed can be used:

```
.background{ background-color: rgb(187,  
170, 170) }
```

This example shows the color as background, it is applied via the CSS property "background".

To optimize and compress your CSS code, you can use our [online CSS compressor and optimizer](#) based on csstidy. If you want to create a linear or radial gradient as background or border, check our [CSS Gradient Generator](#).

Hey! You found this booklet interesting? Support Converting Colors with the new Membership Option!

The pro membership hides all ads, plus gives you double the colors in the color bucket, and more awesome pro features!

[Learn more, Memberships starting at \\$2.50/m!](#)

**Follow me
on Twitter!**

@ConvertingColor