

Converting Colors

CIELCh(71, 6.655, 13.688)

Have a look what the booklet for
CIELCh(71, 6.655, 13.688) contains.

CIELCh(71, 6.526, 15.132)	3
<i>Conversions</i>	4
<i>Details</i>	6
<i>Harmonies</i>	11
<i>Previews</i>	20
<i>Color Blindness Simulation</i>	23
<i>CSS Examples</i>	26

Color

CIELCh(71, 6.526, 15.132)

Conversions

Conversions Part 1

Format	Color
Hex	BBAAAB
RGB	187, 170, 171
RGB Percent	73%, 67%, 67%
CMY	0.2672, 0.3338, 0.3299
CMYK	0.00, 0.09, 0.09, 0.27
HSL	356°, 11%, 70%
HSV	356°, 9%, 73%
XYZ	42.1529, 42.1875, 44.3877
YIQ	175.1970, 9.8110, 3.9150

Conversions

Conversions Part 2

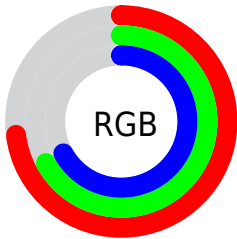
Format	Color
RYB	187, 170, 171
Decimal	12298923
CIELab	71.00, 6.30, 1.70
CIELCh	71, 6.526, 15.132
Yxy	42.1875, 0.3275, 0.3277
Android (android.graphics.Color)	4290489003 (0xFFBBAAAB)
YUV	175.1970, -2.0691, 10.3512
Hunter-Lab	64.9519, 2.1783, 4.9480

Details

The CIELCh color **71, 6.526, 15.132** is a light color, and the websafe version is hex **999999**. A complement of this color would be **75, 6.202, 193.998**, and the grayscale version is **71, 0.009, 296.813**.

A 20% lighter version of the original color is **91, 6.541, 15.254**, and **51, 6.591, 15.069** is the 20% darker color. If you saturate the color by 10%, you get **66, 14.189, 16.109**, and if you desaturate by 10%, it is **76, 0.626, 195.306**.

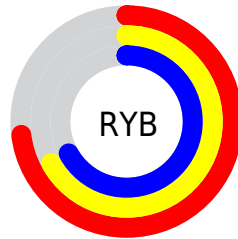
Distribution



Red (73%)

Green (67%)

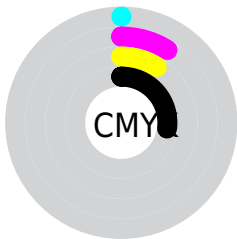
Blue (67%)



Red (73%)

Yellow (67%)

Blue (67%)

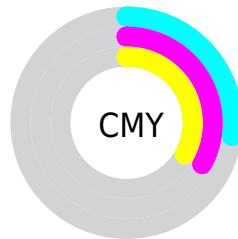


Cyan (0%)

Magenta (9%)

Yellow (9%)

Black (27%)



Cyan (27%)

Magenta (33%)

Yellow (33%)

Brightness & Saturation Gradients

These gradients show how the CIELCh color 71, 6.526, 15.132 changes by changing the brightness by 10 percent. The first figure shows a shift by +10% for each color and the second figure -10%.

Similar to the brightness gradients but the following saturation gradients show a change of the CIELCh color 71, 6.526, 15.132 by changing the saturation by 10% instead.

71, 6.526, 15.132

71, 6.526, 15.132

100, 6.526, 15.132

61, 6.526, 15.132

91, 6.526, 15.132

51, 6.526, 15.132

41, 6.526, 15.132

31, 6.526, 15.132

21, 6.526, 15.132

11, 6.526, 15.132

1, 6.526, 15.132

0, 6.526, 15.132

71, 6.526, 15.132

71, 6.526, 15.132

66, 14.189, 16.109

76, 0.626, 195.306

61, 22.361, 17.272

82, 7.284, 193.937

56, 30.983, 18.735

87, 13.489,
193.391

51, 39.930, 20.604

93, 19.285,
192.944

47, 48.991, 22.995

44, 57.888, 26.021

96, 22.015,
198.061

42, 66.303, 29.704

40, 73.846, 33.818

39, 79.870, 37.496

Harmonies

Complementary

The Complementary color scheme is a pair of colors which are on the opposite of each other on the color wheel.



71, 6.526, 15.132



75, 6.202, 193.998

Rectangle

The Rectangle color scheme consists of four colors that form a rectangle on the color wheel.



71, 6.526, 15.132



71, 6.526, 65.132



71, 6.526, 195.132



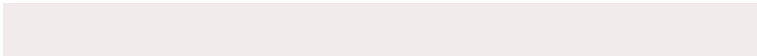
71, 6.526, 245.132

Sweetspot

The Sweet Spot groups the original color and five complimentary colors.



71, 6.524, 15.147



94, 2.603, 14.516



71, 11.021, 323.076



50, 1.994, 14.626



98, 0.011, 296.813



51, 0.007, 296.813

Same Dimension

The Same Dimension uses a secret algorithm to generate beautiful new colors.



71, 6.524, 15.147



88, 9.817, 15.338



73, 5.416, 66.808



37, 4.102, 15.171



32, 70.567, 37.257



3, 12.283, 16.027

Inverse Universe

The Inverse Universe completely reimagines the original color for something new.



71, 6.524, 15.147



88, 9.817, 15.338



73, 5.254, 249.020



37, 4.102, 15.171



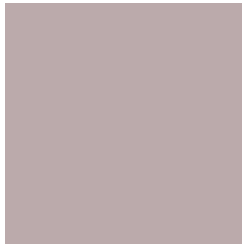
32, 70.567, 37.257



3, 12.283, 16.027

Previews

White Background



This preview shows how the CIELCh color 71, 6.526, 15.132 looks on a white background.

Color Contrast Check

Large Text (above 18pt) WCAG AA × Fail

Any Text WCAG AA × Fail

Large Text (above 18pt) WCAG AAA × Fail

Any Text WCAG AAA × Fail

Black Background



This preview shows how the CIELCh color 71, 6.526, 15.132 looks on a black background.

Color Contrast Check

Large Text (above 18pt) WCAG AA ✓ Pass

Any Text WCAG AA ✓ Pass

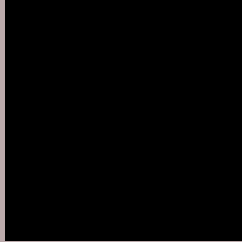
Large Text (above 18pt) WCAG AAA ✓ Pass

Any Text WCAG AAA ✓ Pass

If you want to check with other color combinations, try the [Color Contrast Checker](#).

CIELCh 71, 6.526, 15.132

Background



This preview shows how black text looks on a background with the CIELCh color 71, 6.526, 15.132.



This preview shows how white text looks on a background with the CIELCh color 71, 6.526, 15.132.

Color Blindness Simulation

Color vision deficiency is a very complex topic, and I could not describe the different causes any better than Wikipedia does, so if you want to learn more, you should check out their [article about color blindness](#).

Dichromacy



Original Color

71, 6.526, 15.132

Protanopia

71, 1.509, 19.206

Deuteranopia

71, 9.362, 10.185



Tritanopia
71, 10.356, 337.108

Trichromacy



Original Color
71, 6.526, 15.132

Protanomaly
71, 3.415, 19.554

Deuteranomaly
71, 8.128, 12.397

Tritanomaly
71, 8.423, 348.988

Monochromacy



Original Color
71, 6.526, 15.132

Achromatopsia
71, 0.009, 296.813

Achromatomaly
71, 2.334, 5.911

CSS Examples

Text

The CSS property to change the color of the text to CIELCh 71, 6.526, 15.132 is called "color". The color property can be set on classes, ids or directly on the HTML element.

This example shows how text in the color `rgb(187, 170, 171)` looks like.

```
.text, #text, p{  
    color:rgb(187, 170, 171)  
}
```

If you want to add a text shadow in that color use the text-shadow property, you can generate a text shadow directly with our [CSS Text Shadow Generator](#).

Here you see how black text with a 4 pixel rgb(187, 170, 171) colored shadow looks like.

```
.shadow{ text-shadow: 4px 4px 2px rgb(187, 170, 171) }
```

Border

The CSS property to change the border of an element to CIELCh 71, 6.526, 15.132 is called "border". The border property can be set on classes, ids or directly on the HTML element.

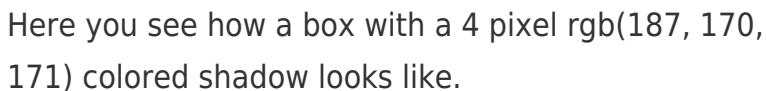
This example shows the color as border, it can be applied via the CSS property "border" or "border-color".

```
.border, #border, table{ border:4px solid rgb(187, 170, 171) }
```

If only the border color should be changed use the property `border-color`.

```
.border{ border-color:rgb(187, 170, 171) }
```

If you want to add a box shadow in that color use:



Here you see how a box with a 4 pixel `rgb(187, 170, 171)` colored shadow looks like.

```
.boxshadow{ -moz-box-shadow:4px 4px 4px  
4px rgb(187, 170, 171); -webkit-box-  
shadow:4px 4px 4px 4px rgb(187, 170, 171);  
box-shadow:4px 4px 4px 4px rgb(187, 170,  
171) }
```

Background

The CSS property to change the background color of an element to CIELCh 71, 6.526, 15.132 is called "background". The background property can be set on classes, ids or directly on the HTML element.

```
.background, #background, body{  
background: rgb(187, 170, 171) }
```

If only the background color should be changed can be used:

```
.background{ background-color: rgb(187,  
170, 171) }
```

This example shows the color as background, it is applied via the CSS property "background".

To optimize and compress your CSS code, you can use our [online CSS compressor and optimizer](#) based on csstidy. If you want to create a linear or radial gradient as background or border, check our [CSS Gradient Generator](#).

Hey! You found this booklet interesting? Support Converting Colors with the new Membership Option!

The pro membership hides all ads, plus gives you double the colors in the color bucket, and more awesome pro features!

[Learn more, Memberships starting at \\$2.50/m!](#)

**Follow me
on Twitter!**

@ConvertingColor