

# Converting Colors

CIELCh(71, 6.966, 58.313)

Have a look what the booklet for  
CIELCh(71, 6.966, 58.313) contains.

<b>CIELCh(71, 6.958, 58.332)</b> .....	3
<i><b>Conversions</b></i> .....	4
<i><b>Details</b></i> .....	6
<i><b>Harmonies</b></i> .....	11
<i><b>Previews</b></i> .....	20
<i><b>Color Blindness Simulation</b></i> .....	23
<i><b>CSS Examples</b></i> .....	26

# Color

**CIELCh(71, 6.958, 58.332)**

# Conversions

## Conversions Part 1

Format	Color
Hex	B9ABA3
RGB	185, 171, 163
RGB Percent	73%, 67%, 64%
CMY	0.2737, 0.3286, 0.3600
CMYK	0.00, 0.08, 0.12, 0.27
HSL	22°, 14%, 68%
HSV	22°, 12%, 73%
XYZ	41.2812, 42.1875, 40.7065
YIQ	174.2740, 10.9120, 0.4800

# Conversions

## Conversions Part 2

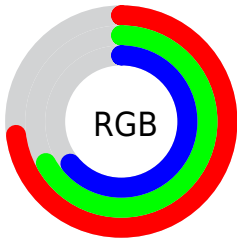
<b>Format</b>	<b>Color</b>
<b>RYB</b>	185, 176, 163
Decimal	12168099
CIELab	71.00, 3.65, 5.92
CIELCh	71, 6.958, 58.332
Yxy	42.1875, 0.3324, 0.3397
Android (android.graphics.Color)	4290358179 (0xFFB9ABA3)
YUV	174.2740, -5.5581, 9.4067
Hunter-Lab	64.9519, -0.2174, 8.3083

# Details

The CIELCh color  $71, 6.958, 58.332$  is a light color, and the websafe version is hex  $999999$ . A complement of this color would be  $71, 6.590, 240.742$ , and the grayscale version is  $71, 0.009, 296.813$ .

A 20% lighter version of the original color is  $91, 6.862, 56.607$ , and  $51, 7.167, 60.072$  is the 20% darker color. If you saturate the color by 10%, you get  $68, 13.258, 57.522$ , and if you desaturate by 10%, it is  $75, 1.063, 58.886$ .

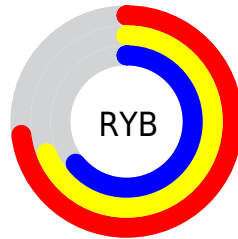
# Distribution



Red (73%)

Green (67%)

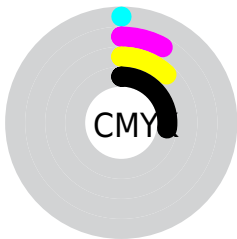
Blue (64%)



Red (73%)

Yellow (69%)

Blue (64%)

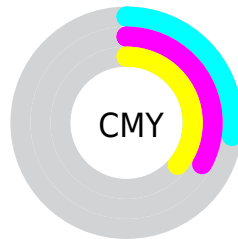


Cyan (0%)

Magenta (8%)

Yellow (12%)

Black (27%)



Cyan (27%)

Magenta (33%)

Yellow (36%)

# Brightness & Saturation Gradients

These gradients show how the CIELCh color 71, 6.958, 58.332 changes by changing the brightness by 10 percent. The first figure shows a shift by +10% for each color and the second figure -10%.

Similar to the brightness gradients but the following saturation gradients show a change of the CIELCh color 71, 6.958, 58.332 by changing the saturation by 10% instead.



 71, 6.958, 58.332

 71, 6.958, 58.332

 100, 6.958, 58.332

 61, 6.958, 58.332

 91, 6.958, 58.332

 51, 6.958, 58.332

 41, 6.958, 58.332

 31, 6.958, 58.332

 21, 6.958, 58.332

 11, 6.958, 58.332

 1, 6.958, 58.332

 0, 6.958, 58.332

 71, 6.958, 58.332

 71, 6.958, 58.332

68, 13.258, 57.522

75, 1.063, 58.886

64, 20.000, 56.718

78, 4.469, 240.305

61, 27.211, 55.968

82, 9.679, 241.158

58, 34.889, 55.283

85, 14.604,  
242.042

54, 42.983, 54.655

89, 19.030,  
241.922

52, 51.329, 54.038

49, 59.542, 53.290

92, 19.237,  
219.119

47, 66.826, 52.095

95, 22.059,  
199.845

45, 71.800, 50.853

96, 22.502,  
198.031

# Harmonies

# Complementary

The Complementary color scheme is a pair of colors which are on the opposite of each other on the color wheel.



71, 6.958, 58.332



71, 6.590, 240.742

# Rectangle

The Rectangle color scheme consists of four colors that form a rectangle on the color wheel.



71, 6.958, 58.332



71, 6.958, 108.332



71, 6.958, 238.332



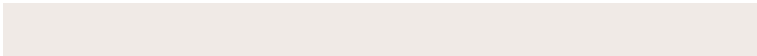
71, 6.958, 288.332

# Sweetspot

The Sweet Spot groups the original color and five complimentary colors.



71, 6.958, 58.351



93, 2.812, 58.916



69, 11.437, 337.203



49, 2.003, 58.879



97, 0.011, 296.813



50, 0.007, 296.813



# Same Dimension

The Same Dimension uses a secret algorithm to generate beautiful new colors.



71, 6.958, 58.351



89, 10.191, 58.157



74, 10.155, 101.955



37, 3.266, 58.557



38, 62.824, 51.362



4, 8.777, 47.356





# Inverse Universe

The Inverse Universe completely reimagines the original color for something new.



71, 6.590, 240.742



89, 9.536, 241.007



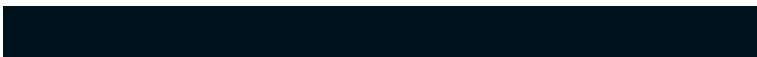
69, 10.336, 284.639



37, 3.133, 240.476



40, 37.569, 266.289

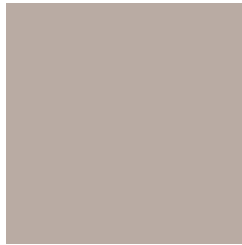


5, 9.049, 253.605



# Previews

## White Background



This preview shows how the CIELCh color 71, 6.958, 58.332 looks on a white background.

## Color Contrast Check

Large Text (above 18pt) WCAG AA × Fail

Any Text WCAG AA × Fail

Large Text (above 18pt) WCAG AAA × Fail

Any Text WCAG AAA × Fail

# Black Background



This preview shows how the CIELCh color 71, 6.958, 58.332 looks on a black background.

## Color Contrast Check

Large Text (above 18pt) WCAG AA ✓ Pass

Any Text WCAG AA ✓ Pass

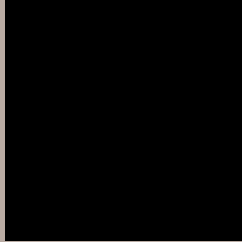
Large Text (above 18pt) WCAG AAA ✓ Pass

Any Text WCAG AAA ✓ Pass

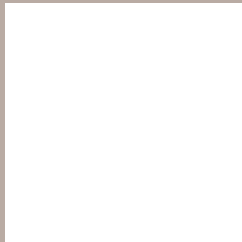
If you want to check with other color combinations, try the [Color Contrast Checker](#).

**CIELCh 71, 6.958, 58.332**

## **Background**



This preview shows how black text looks on a background with the CIELCh color 71, 6.958, 58.332.



This preview shows how white text looks on a background with the CIELCh color 71, 6.958, 58.332.

# Color Blindness Simulation

Color vision deficiency is a very complex topic, and I could not describe the different causes any better than Wikipedia does, so if you want to learn more, you should check out their [article about color blindness](#).

## Dichromacy



### Original Color

71, 6.958, 58.332

### Protanopia

71, 5.399, 84.326

### Deuteranopia

71, 10.392, 32.242



**Tritanopia**  
71, 10.731, 334.978



# Trichromacy



**Original Color**  
71, 6.958, 58.332

**Protanomaly**  
71, 5.555, 71.011

**Deuteranomaly**  
71, 8.997, 37.581

**Tritanomaly**  
71, 7.586, 354.533

# Monochromacy



**Original Color**  
71, 6.958, 58.332

**Achromatopsia**  
71, 0.009, 296.813

**Achromatomaly**  
71, 2.489, 60.263

# CSS Examples

## Text

The CSS property to change the color of the text to CIELCh 71, 6.958, 58.332 is called "color". The color property can be set on classes, ids or directly on the HTML element.

This example shows how text in the color `rgb(185, 171, 163)` looks like.

```
.text, #text, p{  
    color:rgb(185, 171, 163)  
}
```

If you want to add a text shadow in that color use the text-shadow property, you can generate a text shadow directly with our [CSS Text Shadow Generator](#).

Here you see how black text with a 4 pixel rgb(185, 171, 163) colored shadow looks like.

```
.shadow{ text-shadow: 4px 4px 2px rgb(185, 171, 163) }
```

## Border

The CSS property to change the border of an element to CIELCh 71, 6.958, 58.332 is called "border". The border property can be set on classes, ids or directly on the HTML element.

This example shows the color as border, it can be applied via the CSS property "border" or "border-color".

```
.border, #border, table{ border:4px solid rgb(185, 171, 163) }
```

If only the border color should be changed use the property border-color.

```
.border{ border-color:rgb(185, 171, 163) }
```

If you want to add a box shadow in that color use:

Here you see how a box with a 4 pixel rgb(185, 171, 163) colored shadow looks like.

```
.boxshadow{ -moz-box-shadow:4px 4px 4px  
4px rgb(185, 171, 163); -webkit-box-  
shadow:4px 4px 4px 4px rgb(185, 171, 163);  
box-shadow:4px 4px 4px 4px rgb(185, 171,  
163) }
```

# Background

The CSS property to change the background color of an element to CIELCh 71, 6.958, 58.332 is called "background". The background property can be set on classes, ids or directly on the HTML element.

```
.background, #background, body{  
background: rgb(185, 171, 163) }
```

If only the background color should be changed can be used:

```
.background{ background-color: rgb(185,  
171, 163) }
```

This example shows the color as background, it is applied via the CSS property "background".

To optimize and compress your CSS code, you can use our [online CSS compressor and optimizer](#) based on csstidy. If you want to create a linear or radial gradient as background or border, check our [CSS Gradient Generator](#).

Hey! You found this booklet interesting? Support Converting Colors with the new Membership Option!

The pro membership hides all ads, plus gives you double the colors in the color bucket, and more awesome pro features!

**[Learn more, Memberships starting at \\$2.50/m!](#)**

**Follow me  
on Twitter!**

@ConvertingColor