

Converting Colors

CIELCh(71, 8.455, 37.829)

Have a look what the booklet for
CIELCh(71, 8.455, 37.829) contains.

CIELCh(71, 8.443, 34.907)	3
<i>Conversions</i>	4
<i>Details</i>	6
<i>Harmonies</i>	11
<i>Previews</i>	20
<i>Color Blindness Simulation</i>	23
<i>CSS Examples</i>	26

Color

CIELCh(71, 8.443, 34.907)

Conversions

Conversions Part 1

Format	Color
Hex	BEA9A5
RGB	190, 169, 165
RGB Percent	75%, 66%, 65%
CMY	0.2538, 0.3362, 0.3519
CMYK	0.00, 0.11, 0.13, 0.25
HSL	10°, 16%, 70%
HSV	10°, 13%, 75%
XYZ	42.3603, 42.1875, 41.6378
YIQ	174.8230, 13.8000, 3.2080

Conversions

Conversions Part 2

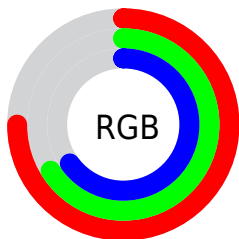
Format	Color
RYB	190, 170, 165
Decimal	12495269
CIELab	71.00, 6.92, 4.83
CIElCh	71, 8.443, 34.907
Yxy	42.1875, 0.3357, 0.3343
Android (android.graphics.Color)	4290685349 (0xFFBEA9A5)
YUV	174.8230, -4.8427, 13.3102
Hunter-Lab	64.9519, 2.7482, 7.4582

Details

The CIELCh color $71, 8.443, 34.907$ is a light color, and the websafe version is hex 999999 . A complement of this color would be $74, 7.754, 215.182$, and the grayscale version is $72, 0.009, 296.813$.

A 20% lighter version of the original color is $91, 8.318, 34.228$, and $51, 8.296, 36.399$ is the 20% darker color. If you saturate the color by 10%, you get $66, 15.496, 35.106$, and if you desaturate by 10%, it is $76, 1.937, 34.680$.

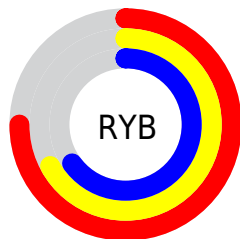
Distribution



Red (75%)

Green (66%)

Blue (65%)



Red (75%)

Yellow (67%)

Blue (65%)

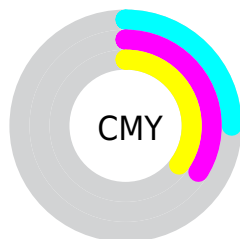


Cyan (0%)

Magenta (11%)

Yellow (13%)

Black (25%)



Cyan (25%)

Magenta (34%)

Yellow (35%)

Brightness & Saturation Gradients

These gradients show how the CIELCh color 71, 8.443, 34.907 changes by changing the brightness by 10 percent. The first figure shows a shift by +10% for each color and the second figure -10%.

Similar to the brightness gradients but the following saturation gradients show a change of the CIELCh color 71, 8.443, 34.907 by changing the saturation by 10% instead.

 71, 8.443, 34.907

 71, 8.443, 34.907

 100, 8.443, 34.907

 61, 8.443, 34.907

 91, 8.443, 34.907

 51, 8.443, 34.907

 41, 8.443, 34.907

 31, 8.443, 34.907

 21, 8.443, 34.907

 11, 8.443, 34.907

 1, 8.443, 34.907

 0, 8.443, 34.907

 71, 8.443, 34.907

 71, 8.443, 34.907

66, 15.496, 35.106

76, 1.937, 34.680

62, 23.136, 35.436

80, 4.067, 215.147

58, 31.372, 35.967

85, 9.622, 215.205

54, 40.176, 36.751

90, 14.779,
215.368

50, 49.451, 37.820

94, 19.253,
207.260

47, 58.979, 39.160

44, 68.298, 40.620

96, 21.018,
198.123

42, 76.385, 41.729

41, 80.917, 42.357

Harmonies

Complementary

The Complementary color scheme is a pair of colors which are on the opposite of each other on the color wheel.



71, 8.443, 34.907



74, 7.754, 215.182

Rectangle

The Rectangle color scheme consists of four colors that form a rectangle on the color wheel.



71, 8.443, 34.907



71, 8.443, 84.907



71, 8.443, 214.907



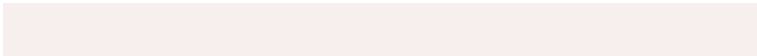
71, 8.443, 264.907

Sweetspot

The Sweet Spot groups the original color and five complimentary colors.



71, 8.442, 34.922



95, 3.063, 34.741



71, 14.912, 329.606



51, 2.201, 34.774



99, 0.012, 296.813



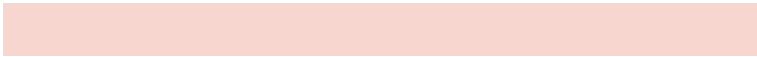
52, 0.007, 296.813

Same Dimension

The Same Dimension uses a secret algorithm to generate beautiful new colors.



71, 8.442, 34.922



88, 12.883, 34.968



74, 9.384, 88.105



37, 3.560, 34.870



34, 70.124, 42.535



4, 11.044, 29.709

Inverse Universe

The Inverse Universe completely reimagines the original color for something new.



74, 7.754, 215.182



93, 11.578, 215.237



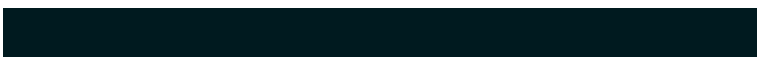
71, 9.343, 271.561



39, 3.355, 215.143



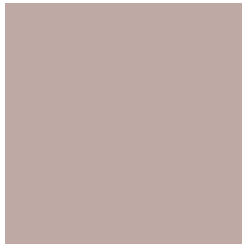
51, 30.463, 226.449



7, 9.673, 221.524

Previews

White Background



This preview shows how the CIELCh color 71, 8.443, 34.907 looks on a white background.

Color Contrast Check

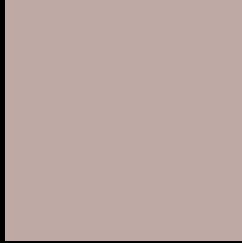
Large Text (above 18pt) WCAG AA × Fail

Any Text WCAG AA × Fail

Large Text (above 18pt) WCAG AAA × Fail

Any Text WCAG AAA × Fail

Black Background



This preview shows how the CIELCh color 71, 8.443, 34.907 looks on a black background.

Color Contrast Check

Large Text (above 18pt) WCAG AA ✓ Pass

Any Text WCAG AA ✓ Pass

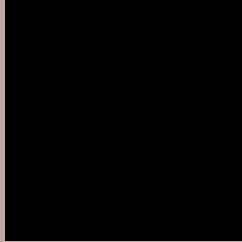
Large Text (above 18pt) WCAG AAA ✓ Pass

Any Text WCAG AAA ✓ Pass

If you want to check with other color combinations, try the [Color Contrast Checker](#).

CIELCh 71, 8.443, 34.907

Background



This preview shows how black text looks on a background with the CIELCh color 71, 8.443, 34.907.



This preview shows how white text looks on a background with the CIELCh color 71, 8.443, 34.907.

Color Blindness Simulation

Color vision deficiency is a very complex topic, and I could not describe the different causes any better than Wikipedia does, so if you want to learn more, you should check out their [article about color blindness](#).

Dichromacy



Original Color

71, 8.443, 34.907

Protanopia

71, 3.767, 79.335

Deuteranopia

71, 10.171, 26.340



Tritanopia
71, 11.810, 343.635

Trichromacy



Original Color
71, 8.443, 34.907

Protanomaly
71, 5.031, 59.948

Deuteranomaly
71, 9.776, 26.554

Tritanomaly
71, 9.556, 356.767

Monochromacy



Original Color
71, 8.443, 34.907

Achromatopsia
71, 0.009, 296.813

Achromatomaly
71, 3.220, 39.211

CSS Examples

Text

The CSS property to change the color of the text to CIELCh 71, 8.443, 34.907 is called "color". The color property can be set on classes, ids or directly on the HTML element.

This example shows how text in the color `rgb(190, 169, 165)` looks like.

```
.text, #text, p{  
    color:rgb(190, 169, 165)  
}
```

If you want to add a text shadow in that color use the text-shadow property, you can generate a text shadow directly with our [CSS Text Shadow Generator](#).

Here you see how black text with a 4 pixel rgb(190, 169, 165) colored shadow looks like.

```
.shadow{ text-shadow: 4px 4px 2px rgb(190, 169, 165) }
```

Border

The CSS property to change the border of an element to CIELCh 71, 8.443, 34.907 is called "border". The border property can be set on classes, ids or directly on the HTML element.

This example shows the color as border, it can be applied via the CSS property "border" or "border-color".

```
.border, #border, table{ border:4px solid rgb(190, 169, 165) }
```

If only the border color should be changed use the property `border-color`.

```
.border{ border-color:rgb(190, 169, 165) }
```

If you want to add a box shadow in that color use:

Here you see how a box with a 4 pixel `rgb(190, 169, 165)` colored shadow looks like.

```
.boxshadow{ -moz-box-shadow:4px 4px 4px  
4px rgb(190, 169, 165); -webkit-box-  
shadow:4px 4px 4px 4px rgb(190, 169, 165);  
box-shadow:4px 4px 4px 4px rgb(190, 169,  
165) }
```

Background

The CSS property to change the background color of an element to CIELCh 71, 8.443, 34.907 is called "background". The background property can be set on classes, ids or directly on the HTML element.

```
.background, #background, body{  
background: rgb(190, 169, 165) }
```

If only the background color should be changed can be used:

```
.background{ background-color: rgb(190,  
169, 165) }
```

This example shows the color as background, it is applied via the CSS property "background".

To optimize and compress your CSS code, you can use our [online CSS compressor and optimizer](#) based on csstidy. If you want to create a linear or radial gradient as background or border, check our [CSS Gradient Generator](#).

Hey! You found this booklet interesting? Support Converting Colors with the new Membership Option!

The pro membership hides all ads, plus gives you double the colors in the color bucket, and more awesome pro features!

[Learn more, Memberships starting at \\$2.50/m!](#)

**Follow me
on Twitter!**

@ConvertingColor