

Converting Colors

CIELCh(71, 8.701, 344.467)

Have a look what the booklet for
CIELCh(71, 8.701, 344.467) contains.

CIELCh(71, 8.710, 345.909)	3
<i>Conversions</i>	4
<i>Details</i>	6
<i>Harmonies</i>	12
<i>Previews</i>	21
<i>Color Blindness Simulation</i>	24
<i>CSS Examples</i>	27

Color

CIELCh(71, 8.710, 345.909)

Conversions

Conversions Part 1

Format	Color
Hex	BCA9B2
RGB	188, 169, 178
RGB Percent	74%, 66%, 70%
CMY	0.2634, 0.3379, 0.3026
CMYK	0.00, 0.10, 0.05, 0.26
HSL	332°, 12%, 70%
HSV	332°, 10%, 74%
XYZ	42.8694, 42.1875, 47.9108
YIQ	175.7070, 8.4350, 6.8270

Conversions

Conversions Part 2

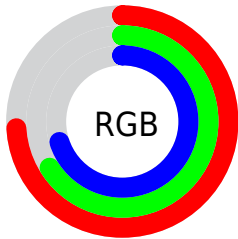
Format	Color
R_{YB}	188, 169, 178
Decimal	12364210
CIE _{Lab}	71.00, 8.45, -2.12
CIE _{LCh}	71, 8.710, 345.909
Yxy	42.1875, 0.3224, 0.3173
Android (android.graphics.Color)	4290554290 (0xFFBCA9B2)
YUV	175.7070, 1.1304, 10.7810
Hunter-Lab	64.9519, 4.1473, 1.7319

Details

The CIELCh color $71, 8.710, 345.909$ is a light color, and the websafe version is hex 999999 . A complement of this color would be $75, 8.579, 164.286$, and the grayscale version is $72, 0.009, 296.813$.

A 20% lighter version of the original color is $91, 8.864, 344.284$, and $51, 8.639, 347.873$ is the 20% darker color. If you saturate the color by 10%, you get $66, 17.516, 346.884$, and if you desaturate by 10%, it is $76, 0.102, 341.210$.

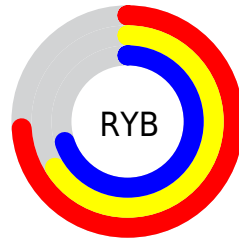
Distribution



Red (74%)

Green (66%)

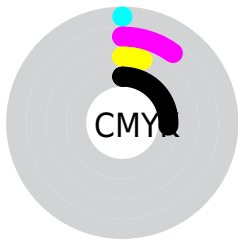
Blue (70%)



Red (74%)

Yellow (66%)

Blue (70%)

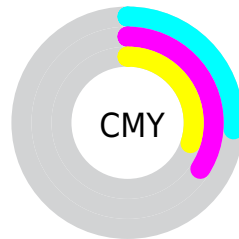


Cyan (0%)

Magenta (10%)

Yellow (5%)

Black (26%)



Cyan (26%)

Magenta (34%)

Yellow (30%)

Brightness & Saturation Gradients

These gradients show how the CIELCh color 71, 8.710, 345.909 changes by changing the brightness by 10 percent. The first figure shows a shift by +10% for each color and the second figure -10%.

Similar to the brightness gradients but the following saturation gradients show a change of the CIELCh color 71, 8.710, 345.909 by changing the saturation by 10% instead.

71, 8.710, 345.909

71, 8.710, 345.909

100, 8.710,
345.909

61, 8.710, 345.909

91, 8.710, 345.909

51, 8.710, 345.909

41, 8.710, 345.909

31, 8.710, 345.909

21, 8.710, 345.909

11, 8.710, 345.909

1, 8.710, 345.909

0, 8.710, 345.909

71, 8.710, 345.909

71, 8.710, 345.909

66, 17.516,
346.884

76, 0.102, 341.210

61, 26.410,
347.960

81, 8.241, 164.385

57, 35.205,
349.190

87, 16.294,
163.655

52, 43.619,
350.631

92, 24.051,
162.999

49, 51.277,
352.361

95, 27.185,
166.090

45, 57.735,
354.490

95, 24.479,
175.818

43, 62.576,
357.164

96, 22.560,
187.508

41, 65.573, 0.549

96, 21.738,
198.078

40, 67.138, 4.585

Harmonies

Complementary

The Complementary color scheme is a pair of colors which are on the opposite of each other on the color wheel.



71, 8.710, 345.909



75, 8.579, 164.286

Rectangle

The Rectangle color scheme consists of four colors that form a rectangle on the color wheel.



71, 8.710, 345.909



71, 8.710, 35.909



71, 8.710, 165.909



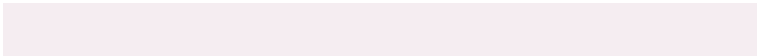
71, 8.710, 215.909

Sweetspot

The Sweet Spot groups the original color and five complimentary colors.



71, 8.708, 345.914



95, 3.177, 345.197



71, 11.049, 310.081



50, 2.409, 345.297



98, 0.011, 296.813



51, 0.007, 296.813

Same Dimension

The Same Dimension uses a secret algorithm to generate beautiful new colors.



71, 8.708, 345.914



89, 12.848, 346.110



71, 7.183, 21.333



37, 4.894, 345.843



34, 59.138, 3.931



3, 13.752, 353.152

Inverse Universe

The Inverse Universe completely reimagines the original color for something new.



71, 8.708, 345.914



89, 12.848, 346.110



75, 6.739, 200.407



37, 4.894, 345.843



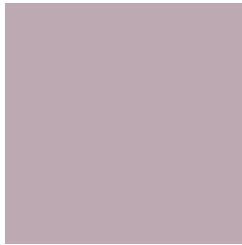
34, 59.138, 3.931



3, 13.752, 353.152

Previews

White Background



This preview shows how the CIELCh color 71, 8.710, 345.909 looks on a white background.

Color Contrast Check

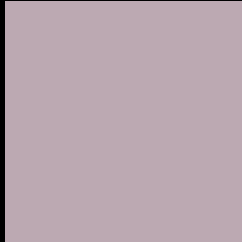
Large Text (above 18pt) WCAG AA × Fail

Any Text WCAG AA × Fail

Large Text (above 18pt) WCAG AAA × Fail

Any Text WCAG AAA × Fail

Black Background



This preview shows how the CIE LCh color 71, 8.710, 345.909 looks on a black background.

Color Contrast Check

Large Text (above 18pt) WCAG AA ✓ Pass

Any Text WCAG AA ✓ Pass

Large Text (above 18pt) WCAG AAA ✓ Pass

Any Text WCAG AAA ✓ Pass

If you want to check with other color combinations, try the [Color Contrast Checker](#).

CIELCh 71, 8.710, 345.909

Background



This preview shows how black text looks on a background with the CIELCh color 71, 8.710, 345.909.



This preview shows how white text looks on a background with the CIELCh color 71, 8.710, 345.909.

Color Blindness Simulation

Color vision deficiency is a very complex topic, and I could not describe the different causes any better than Wikipedia does, so if you want to learn more, you should check out their [article about color blindness](#).

Dichromacy



Original Color


71, 8.710, 345.909

Protanopia

71, 3.909, 301.479

Deuteranopia

71, 9.645, 345.862



Tritanopia
71, 10.356, 337.108

Trichromacy



Original Color
71, 8.710, 345.909

Protanomaly
71, 5.546, 327.850

Deuteranomaly
71, 9.645, 345.862

Tritanomaly
71, 9.997, 339.398

Monochromacy



Original Color
71, 8.710, 345.909

Achromatopsia
72, 0.009, 296.813

Achromatomaly
71, 3.435, 340.185

CSS Examples

Text

The CSS property to change the color of the text to CIELCh 71, 8.710, 345.909 is called "color". The color property can be set on classes, ids or directly on the HTML element.

This example shows how text in the color `rgb(188, 169, 178)` looks like.

```
.text, #text, p{  
    color:rgb(188, 169, 178)  
}
```

If you want to add a text shadow in that color use the text-shadow property, you can generate a text shadow directly with our [CSS Text Shadow Generator](#).

Here you see how black text with a 4 pixel rgb(188, 169, 178) colored shadow looks like.

```
.shadow{ text-shadow: 4px 4px 2px rgb(188, 169, 178) }
```

Border

The CSS property to change the border of an element to CIELCh 71, 8.710, 345.909 is called "border". The border property can be set on classes, ids or directly on the HTML element.

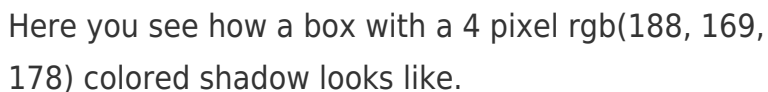
This example shows the color as border, it can be applied via the CSS property "border" or "border-color".

```
.border, #border, table{ border:4px solid rgb(188, 169, 178) }
```

If only the border color should be changed use the property `border-color`.

```
.border{ border-color:rgb(188, 169, 178) }
```

If you want to add a box shadow in that color use:



Here you see how a box with a 4 pixel `rgb(188, 169, 178)` colored shadow looks like.

```
.boxshadow{ -moz-box-shadow:4px 4px 4px 4px rgb(188, 169, 178); -webkit-box-shadow:4px 4px 4px 4px rgb(188, 169, 178); box-shadow:4px 4px 4px 4px rgb(188, 169, 178) }
```

Background

The CSS property to change the background color of an element to CIELCh 71, 8.710, 345.909 is called "background". The background property can be set on classes, ids or directly on the HTML element.

```
.background, #background, body{  
background: rgb(188, 169, 178) }
```

If only the background color should be changed can be used:

```
.background{ background-color: rgb(188,  
169, 178) }
```

This example shows the color as background, it is applied via the CSS property "background".

To optimize and compress your CSS code, you can use our [online CSS compressor and optimizer](#) based on csstidy. If you want to create a linear or radial gradient as background or border, check our [CSS Gradient Generator](#).

Hey! You found this booklet interesting? Support Converting Colors with the new Membership Option!

The pro membership hides all ads, plus gives you double the colors in the color bucket, and more awesome pro features!

[Learn more, Memberships starting at \\$2.50/m!](#)

**Follow me
on Twitter!**

@ConvertingColor