

Converting Colors

CIELCh(71, 8.871, 348.090)

Have a look what the booklet for
CIELCh(71, 8.871, 348.090) contains.

CIELCh(71, 8.423, 348.988)	3
<i>Conversions</i>	4
<i>Details</i>	6
<i>Harmonies</i>	11
<i>Previews</i>	20
<i>Color Blindness Simulation</i>	23
<i>CSS Examples</i>	26

Color

CIELCh(71, 8.423, 348.988)

Conversions

Conversions Part 1

Format	Color
Hex	BCA9B1
RGB	188, 169, 177
RGB Percent	74%, 66%, 69%
CMY	0.2631, 0.3376, 0.3063
CMYK	0.00, 0.10, 0.06, 0.26
HSL	335°, 12%, 70%
HSV	335°, 10%, 74%
XYZ	42.8091, 42.1875, 47.4290
YIQ	175.5930, 8.7560, 6.5160

Conversions

Conversions Part 2

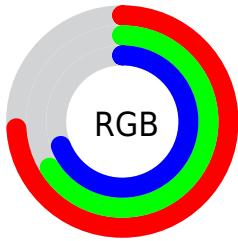
Format	Color
RYB	188, 169, 177
Decimal	12364209
CIELab	71.00, 8.27, -1.61
CIELCh	71, 8.423, 348.988
Yxy	42.1875, 0.3233, 0.3186
Android (android.graphics.Color)	4290554289 (0xFFBCA9B1)
YUV	175.5930, 0.6937, 10.8809
Hunter-Lab	64.9519, 3.9815, 2.1717

Details

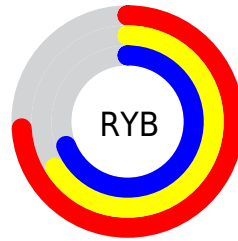
The CIELCh color $71, 8.423, 348.988$ is a light color, and the websafe version is hex 999999 . A complement of this color would be $75, 8.267, 167.305$, and the grayscale version is $72, 0.009, 296.813$.

A 20% lighter version of the original color is $91, 8.577, 347.097$, and $51, 8.355, 351.266$ is the 20% darker color. If you saturate the color by 10%, you get $66, 16.975, 350.018$, and if you desaturate by 10%, it is $76, 0.095, 343.793$.

Distribution



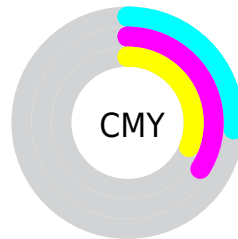
- Red (74%)
- Green (66%)
- Blue (69%)



- Red (74%)
- Yellow (66%)
- Blue (69%)



- Cyan (0%)
- Magenta (10%)
- Yellow (6%)
- Black (26%)



- Cyan (26%)
- Magenta (34%)
- Yellow (31%)

Brightness & Saturation Gradients

These gradients show how the CIELCh color 71, 8.423, 348.988 changes by changing the brightness by 10 percent. The first figure shows a shift by +10% for each color and the second figure -10%.

Similar to the brightness gradients but the following saturation gradients show a change of the CIELCh color 71, 8.423, 348.988 by changing the saturation by 10% instead.

71, 8.423, 348.988

71, 8.423, 348.988

100, 8.423,
348.988

61, 8.423, 348.988

91, 8.423, 348.988

51, 8.423, 348.988

41, 8.423, 348.988

31, 8.423, 348.988

21, 8.423, 348.988

11, 8.423, 348.988

1, 8.423, 348.988

0, 8.423, 348.988

71, 8.423, 348.988

71, 8.423, 348.988

66, 16.975,
350.018

76, 0.095, 343.793

61, 25.654,
351.167

81, 7.949, 167.406

56, 34.283,
352.496

87, 15.689,
166.655

52, 42.595,
354.073

92, 23.127,
165.982

48, 50.231,
355.989

95, 25.978,
169.804

45, 56.764,
358.372

95, 23.367,
181.521

43, 61.802, 1.383

96, 21.851,
195.438

41, 65.146, 5.194

96, 21.716,
198.080

40, 67.222, 9.700

Harmonies

Complementary

The Complementary color scheme is a pair of colors which are on the opposite of each other on the color wheel.



71, 8.423, 348.988



75, 8.267, 167.305

Rectangle

The Rectangle color scheme consists of four colors that form a rectangle on the color wheel.



71, 8.423, 348.988



71, 8.423, 38.988



71, 8.423, 168.988



71, 8.423, 218.988

Sweetspot

The Sweet Spot groups the original color and five complimentary colors.



71, 8.421, 348.994



95, 3.068, 348.240



71, 11.168, 311.778



50, 2.327, 348.346



98, 0.011, 296.813



51, 0.007, 296.813

Same Dimension

The Same Dimension uses a secret algorithm to generate beautiful new colors.



71, 8.421, 348.994



89, 12.430, 349.201



71, 6.849, 25.672



37, 4.732, 348.919



33, 59.119, 8.971



3, 13.411, 356.169

Inverse Universe

The Inverse Universe completely reimagines the original color for something new.



71, 8.421, 348.994



89, 12.430, 349.201



74, 6.419, 205.121



37, 4.732, 348.919



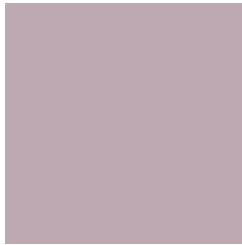
33, 59.119, 8.971



3, 13.411, 356.169

Previews

White Background



This preview shows how the CIELCh color 71, 8.423, 348.988 looks on a white background.

Color Contrast Check

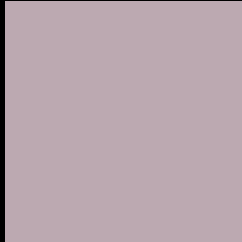
Large Text (above 18pt) WCAG AA × Fail

Any Text WCAG AA × Fail

Large Text (above 18pt) WCAG AAA × Fail

Any Text WCAG AAA × Fail

Black Background



This preview shows how the CIE LCh color 71, 8.423, 348.988 looks on a black background.

Color Contrast Check

Large Text (above 18pt) WCAG AA ✓ Pass

Any Text WCAG AA ✓ Pass

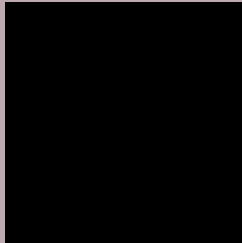
Large Text (above 18pt) WCAG AAA ✓ Pass

Any Text WCAG AAA ✓ Pass

If you want to check with other color combinations, try the [Color Contrast Checker](#).

CIELCh 71, 8.423, 348.988

Background



This preview shows how black text looks on a background with the CIELCh color 71, 8.423, 348.988.



This preview shows how white text looks on a background with the CIELCh color 71, 8.423, 348.988.

Color Blindness Simulation

Color vision deficiency is a very complex topic, and I could not describe the different causes any better than Wikipedia does, so if you want to learn more, you should check out their [article about color blindness](#).

Dichromacy



Original Color

71, 8.423, 348.988

Protanopia

71, 3.375, 303.210

Deuteranopia

71, 9.357, 348.634



Tritanopia
71, 10.632, 338.544

Trichromacy



Original Color
71, 8.423, 348.988

Protanomaly
71, 4.465, 332.555

Deuteranomaly
71, 9.357, 348.634

Tritanomaly
71, 10.284, 340.822

Monochromacy



Original Color
71, 8.423, 348.988

Achromatopsia
71, 0.009, 296.813

Achromatomaly
71, 3.116, 347.894

CSS Examples

Text

The CSS property to change the color of the text to CIELCh 71, 8.423, 348.988 is called "color". The color property can be set on classes, ids or directly on the HTML element.

This example shows how text in the color `rgb(188, 169, 177)` looks like.

```
.text, #text, p{  
    color:rgb(188, 169, 177)  
}
```

If you want to add a text shadow in that color use the text-shadow property, you can generate a text shadow directly with our [CSS Text Shadow Generator](#).

Here you see how black text with a 4 pixel rgb(188, 169, 177) colored shadow looks like.

```
.shadow{ text-shadow: 4px 4px 2px rgb(188, 169, 177) }
```

Border

The CSS property to change the border of an element to CIELCh 71, 8.423, 348.988 is called "border". The border property can be set on classes, ids or directly on the HTML element.

This example shows the color as border, it can be applied via the CSS property "border" or "border-color".

```
.border, #border, table{ border:4px solid rgb(188, 169, 177) }
```

If only the border color should be changed use the property `border-color`.

```
.border{ border-color:rgb(188, 169, 177) }
```

If you want to add a box shadow in that color use:

Here you see how a box with a 4 pixel `rgb(188, 169, 177)` colored shadow looks like.

```
.boxshadow{ -moz-box-shadow:4px 4px 4px  
4px rgb(188, 169, 177); -webkit-box-  
shadow:4px 4px 4px 4px rgb(188, 169, 177);  
box-shadow:4px 4px 4px 4px rgb(188, 169,  
177) }
```

Background

The CSS property to change the background color of an element to CIELCh 71, 8.423, 348.988 is called "background". The background property can be set on classes, ids or directly on the HTML element.

```
.background, #background, body{  
background: rgb(188, 169, 177) }
```

If only the background color should be changed can be used:

```
.background{ background-color: rgb(188,  
169, 177) }
```

This example shows the color as background, it is applied via the CSS property "background".

To optimize and compress your CSS code, you can use our [online CSS compressor and optimizer](#) based on csstidy. If you want to create a linear or radial gradient as background or border, check our [CSS Gradient Generator](#).

Hey! You found this booklet interesting? Support Converting Colors with the new Membership Option!

The pro membership hides all ads, plus gives you double the colors in the color bucket, and more awesome pro features!

[Learn more, Memberships starting at \\$2.50/m!](#)

**Follow me
on Twitter!**

@ConvertingColor