

Converting Colors

CIELCh(71, 9.570, 39.932)

Have a look what the booklet for
CIELCh(71, 9.570, 39.932) contains.

CIELCh(71, 9.570, 39.932)	3
<i>Conversions</i>	4
<i>Details</i>	6
<i>Harmonies</i>	11
<i>Previews</i>	20
<i>Color Blindness Simulation</i>	23
<i>CSS Examples</i>	26

Color

CIELCh(71, 9.570, 39.932)

Conversions

Conversions Part 1

Format	Color
Hex	C0A9A3
RGB	192, 169, 163
RGB Percent	75%, 66%, 64%
CMY	0.2473, 0.3375, 0.3611
CMYK	0.00, 0.12, 0.15, 0.25
HSL	12°, 19%, 70%
HSV	12°, 15%, 75%
XYZ	42.4983, 42.1875, 40.5196
YIQ	175.1930, 15.6340, 3.0100

Conversions

Conversions Part 2

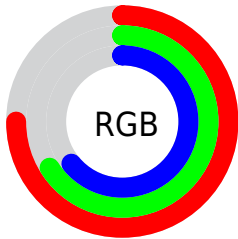
Format	Color
RYB	192, 171, 163
Decimal	12626339
CIELab	71.00, 7.34, 6.14
CIELCh	71, 9.570, 39.932
Yxy	42.1875, 0.3394, 0.3369
Android (android.graphics.Color)	4290816419 (0xFFC0A9A3)
YUV	175.1930, -6.0111, 14.7397
Hunter-Lab	64.9519, 3.1276, 8.4789

Details

The CIELCh color $71, 9.570, 39.932$ is a light color, and the websafe version is hex `CC9999`. A complement of this color would be $74, 8.694, 220.894$, and the grayscale version is $72, 0.009, 296.813$.

A 20% lighter version of the original color is $91, 9.718, 38.487$, and $51, 9.545, 41.565$ is the 20% darker color. If you saturate the color by 10%, you get $67, 16.572, 39.903$, and if you desaturate by 10%, it is $75, 3.106, 40.006$.

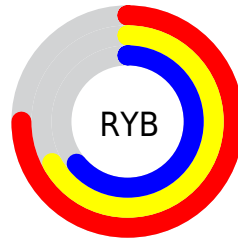
Distribution



Red (75%)

Green (66%)

Blue (64%)



Red (75%)

Yellow (67%)

Blue (64%)

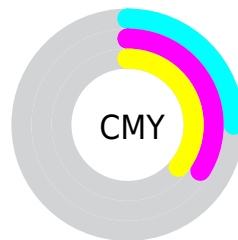


Cyan (0%)

Magenta (12%)

Yellow (15%)

Black (25%)



Cyan (25%)

Magenta (34%)


Yellow (36%)

Brightness & Saturation Gradients

These gradients show how the CIELCh color 71, 9.570, 39.932 changes by changing the brightness by 10 percent. The first figure shows a shift by +10% for each color and the second figure -10%.

Similar to the brightness gradients but the following saturation gradients show a change of the CIELCh color 71, 9.570, 39.932 by changing the saturation by 10% instead.

 71, 9.570, 39.932  71, 9.570, 39.932

 100, 9.570, 39.932  61, 9.570, 39.932

 91, 9.570, 39.932  51, 9.570, 39.932

 41, 9.570, 39.932

 31, 9.570, 39.932

 21, 9.570, 39.932

 11, 9.570, 39.932

 1, 9.570, 39.932

 0, 9.570, 39.932

 71, 9.570, 39.932  71, 9.570, 39.932

67, 16.572, 39.903

75, 3.106, 40.006

62, 24.154, 39.989

80, 2.865, 220.615

58, 32.330, 40.248

84, 8.395, 220.810

55, 41.078, 40.716

89, 13.537,
221.144

51, 50.301, 41.407

93, 17.851,
215.236

48, 59.764, 42.277

45, 68.934, 43.129

96, 20.531,
198.154

43, 76.659, 43.452

42, 79.973, 43.656

Harmonies

Complementary

The Complementary color scheme is a pair of colors which are on the opposite of each other on the color wheel.



71, 9.570, 39.932



74, 8.694, 220.894

Rectangle

The Rectangle color scheme consists of four colors that form a rectangle on the color wheel.



71, 9.570, 39.932



71, 9.570, 89.932



71, 9.570, 219.932



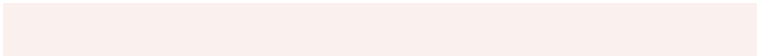
71, 9.570, 269.932

Sweetspot

The Sweet Spot groups the original color and five complimentary colors.



71, 9.569, 39.946



95, 3.767, 40.006



70, 16.684, 331.452



51, 2.577, 40.012



99, 0.012, 296.813



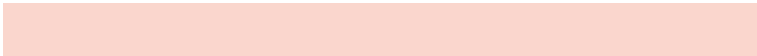
52, 0.007, 296.813

Same Dimension

The Same Dimension uses a secret algorithm to generate beautiful new colors.



71, 9.569, 39.946



88, 14.311, 39.921



75, 11.426, 91.835



39, 3.535, 39.999



35, 69.750, 43.965



4, 12.373, 32.326

Inverse Universe

The Inverse Universe completely reimagines the original color for something new.



74, 8.694, 220.894



93, 12.718, 221.044



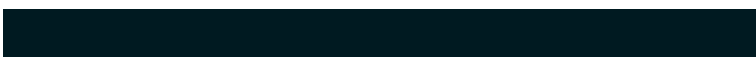
70, 11.459, 275.726



40, 3.338, 220.685



49, 31.180, 236.622



8, 10.369, 228.683

Previews

White Background



This preview shows how the CIELCh color 71, 9.570, 39.932 looks on a white background.

Color Contrast Check

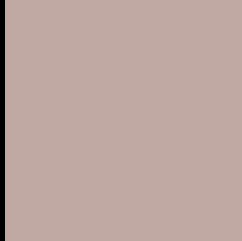
Large Text (above 18pt) WCAG AA × Fail

Any Text WCAG AA × Fail

Large Text (above 18pt) WCAG AAA × Fail

Any Text WCAG AAA × Fail

Black Background



This preview shows how the CIELCh color 71, 9.570, 39.932 looks on a black background.

Color Contrast Check

Large Text (above 18pt) WCAG AA ✓ Pass

Any Text WCAG AA ✓ Pass

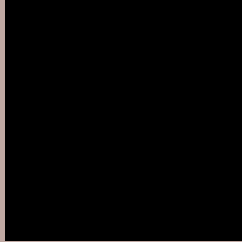
Large Text (above 18pt) WCAG AAA ✓ Pass

Any Text WCAG AAA ✓ Pass

If you want to check with other color combinations, try the [Color Contrast Checker](#).

CIELCh 71, 9.570, 39.932

Background



This preview shows how black text looks on a background with the CIELCh color 71, 9.570, 39.932.



This preview shows how white text looks on a background with the CIELCh color 71, 9.570, 39.932.

Color Blindness Simulation

Color vision deficiency is a very complex topic, and I could not describe the different causes any better than Wikipedia does, so if you want to learn more, you should check out their [article about color blindness](#).

Dichromacy



Original Color

71, 9.570, 39.932

Protanopia

71, 4.909, 81.706

Deuteranopia

71, 10.931, 34.572



Tritanopia
71, 12.752, 346.861

Trichromacy



Original Color
71, 9.570, 39.932

Protanomaly
71, 6.354, 62.739

Deuteranomaly
71, 10.543, 35.082

Tritanomaly
71, 10.475, 2.197

Monochromacy



Original Color
71, 9.570, 39.932

Achromatopsia
71, 0.009, 296.813

Achromatomaly
71, 3.220, 39.211

CSS Examples

Text

The CSS property to change the color of the text to CIELCh 71, 9.570, 39.932 is called "color". The color property can be set on classes, ids or directly on the HTML element.

This example shows how text in the color `rgb(192, 169, 163)` looks like.

```
.text, #text, p{  
    color:rgb(192, 169, 163)  
}
```

If you want to add a text shadow in that color use the text-shadow property, you can generate a text shadow directly with our [CSS Text Shadow Generator](#).

Here you see how black text with a 4 pixel rgb(192, 169, 163) colored shadow looks like.

```
.shadow{ text-shadow: 4px 4px 2px rgb(192, 169, 163) }
```

Border

The CSS property to change the border of an element to CIELCh 71, 9.570, 39.932 is called "border". The border property can be set on classes, ids or directly on the HTML element.

This example shows the color as border, it can be applied via the CSS property "border" or "border-color".

```
.border, #border, table{ border:4px solid rgb(192, 169, 163) }
```

If only the border color should be changed use the property `border-color`.

```
.border{ border-color:rgb(192, 169, 163) }
```

If you want to add a box shadow in that color use:

Here you see how a box with a 4 pixel `rgb(192, 169, 163)` colored shadow looks like.

```
.boxshadow{ -moz-box-shadow:4px 4px 4px  
4px rgb(192, 169, 163); -webkit-box-  
shadow:4px 4px 4px 4px rgb(192, 169, 163);  
box-shadow:4px 4px 4px 4px rgb(192, 169,  
163) }
```

Background

The CSS property to change the background color of an element to CIELCh 71, 9.570, 39.932 is called "background". The background property can be set on classes, ids or directly on the HTML element.

```
.background, #background, body{  
background: rgb(192, 169, 163) }
```

If only the background color should be changed can be used:

```
.background{ background-color: rgb(192,  
169, 163) }
```

This example shows the color as background, it is applied via the CSS property "background".

To optimize and compress your CSS code, you can use our [online CSS compressor and optimizer](#) based on csstidy. If you want to create a linear or radial gradient as background or border, check our [CSS Gradient Generator](#).

Hey! You found this booklet interesting? Support Converting Colors with the new Membership Option!

The pro membership hides all ads, plus gives you double the colors in the color bucket, and more awesome pro features!

[Learn more, Memberships starting at \\$2.50/m!](#)

**Follow me
on Twitter!**

@ConvertingColor