

Converting Colors

CIELCh(72, 10.079, 23.299)

Have a look what the booklet for
CIELCh(72, 10.079, 23.299) contains.

CIELCh(72, 10.067, 23.294)	3
<i>Conversions</i>	4
<i>Details</i>	6
<i>Harmonies</i>	11
<i>Previews</i>	20
<i>Color Blindness Simulation</i>	23
<i>CSS Examples</i>	26

Color

CIELCh(72, 10.067, 23.294)

Conversions

Conversions Part 1

Format	Color
Hex	C5ABAA
RGB	197, 171, 170
RGB Percent	77%, 67%, 67%
CMY	0.2292, 0.3311, 0.3350
CMYK	0.00, 0.13, 0.14, 0.23
HSL	2°, 19%, 72%
HSV	2°, 14%, 77%
XYZ	44.6058, 43.6590, 43.8927
YIQ	178.6600, 15.8170, 5.2010

Conversions

Conversions Part 2

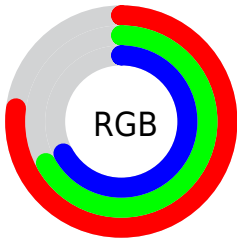
Format	Color
R _Y B	197, 171, 170
Decimal	12954538
CIE Lab	72.00, 9.25, 3.98
CIE LCh	72, 10.067, 23.294
Yxy	43.6590, 0.3375, 0.3304
Android (android.graphics.Color)	4291144618 (0xFFC5ABAA)
YUV	178.6600, -4.2694, 16.0842
Hunter-Lab	66.0750, 4.8704, 6.8670

Details

The CIELCh color **72, 10.067, 23.294** is a light color, and the websafe version is hex **CC9999**. A complement of this color would be **77, 9.209, 202.123**, and the grayscale version is **73, 0.009, 296.813**.

A 20% lighter version of the original color is **92, 10.246, 22.933**, and **52, 9.995, 23.780** is the 20% darker color. If you saturate the color by 10%, you get **67, 18.106, 24.077**, and if you desaturate by 10%, it is **77, 2.627, 22.589**.

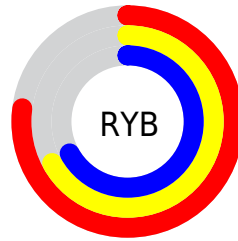
Distribution



Red (77%)

Green (67%)

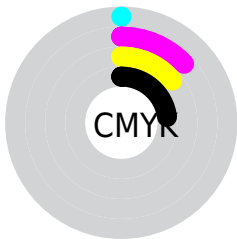
Blue (67%)



Red (77%)

Yellow (67%)

Blue (67%)

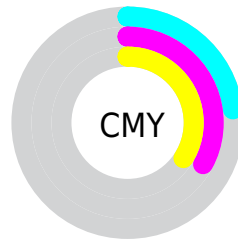


Cyan (0%)

Magenta (13%)

Yellow (14%)

Black (23%)



Cyan (23%)

Magenta (33%)

Yellow (34%)

Brightness & Saturation Gradients

These gradients show how the CIELCh color 72, 10.067, 23.294 changes by changing the brightness by 10 percent. The first figure shows a shift by +10% for each color and the second figure -10%.

Similar to the brightness gradients but the following saturation gradients show a change of the CIELCh color 72, 10.067, 23.294 by changing the saturation by 10% instead.

72, 10.067, 23.294

72, 10.067, 23.294

100, 10.067,
23.294

62, 10.067, 23.294

92, 10.067, 23.294

52, 10.067, 23.294

42, 10.067, 23.294

32, 10.067, 23.294

22, 10.067, 23.294

12, 10.067, 23.294

2, 10.067, 23.294

0, 10.067, 23.294

72, 10.067, 23.294

72, 10.067, 23.294

67, 18.106, 24.077

77, 2.627, 22.589

62, 26.754, 25.079

83, 4.244, 202.503

57, 35.963, 26.400

88, 10.598,
202.107

53, 45.619, 28.131

94, 16.489,
201.849

49, 55.514, 30.356

46, 65.327, 33.091

96, 19.146,
198.241

43, 74.521, 36.150

42, 81.962, 38.864

41, 85.462, 40.362

Harmonies

Complementary

The Complementary color scheme is a pair of colors which are on the opposite of each other on the color wheel.



72, 10.067, 23.294



77, 9.209, 202.123

Rectangle

The Rectangle color scheme consists of four colors that form a rectangle on the color wheel.



72, 10.067, 23.294



72, 10.067, 73.294



72, 10.067, 203.294



72, 10.067, 253.294

Sweetspot

The Sweet Spot groups the original color and five complimentary colors.



72, 10.066, 23.305



97, 3.485, 22.622



72, 17.344, 326.087



51, 2.484, 22.691



0, 0.000, 0.000



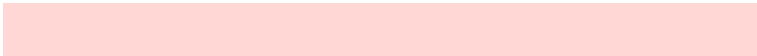
53, 0.007, 296.813

Same Dimension

The Same Dimension uses a secret algorithm to generate beautiful new colors.



72, 10.066, 23.305



89, 14.638, 23.483



75, 9.132, 77.193



39, 4.125, 23.015



34, 74.136, 40.270



4, 15.519, 21.379

Inverse Universe

The Inverse Universe completely reimagines the original color for something new.



77, 9.209, 202.123



97, 13.161, 202.024



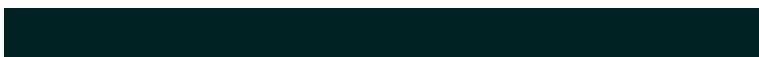
74, 8.889, 260.855



41, 3.886, 202.315



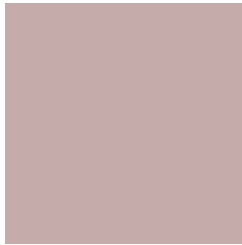
59, 34.128, 202.372



11, 12.477, 200.995

Previews

White Background



This preview shows how the CIELCh color 72, 10.067, 23.294 looks on a white background.

Color Contrast Check

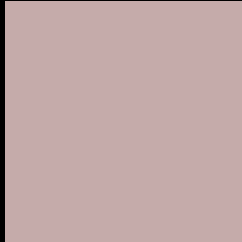
Large Text (above 18pt) WCAG AA × Fail

Any Text WCAG AA × Fail

Large Text (above 18pt) WCAG AAA × Fail

Any Text WCAG AAA × Fail

Black Background



This preview shows how the CIELCh color 72, 10.067, 23.294 looks on a black background.

Color Contrast Check

Large Text (above 18pt) WCAG AA ✓ Pass

Any Text WCAG AA ✓ Pass

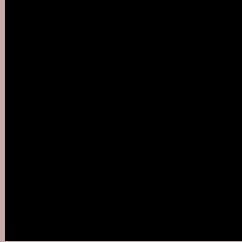
Large Text (above 18pt) WCAG AAA ✓ Pass

Any Text WCAG AAA ✓ Pass

If you want to check with other color combinations, try the [Color Contrast Checker](#).

CIELCh 72, 10.067, 23.294

Background



This preview shows how black text looks on a background with the CIELCh color 72, 10.067, 23.294.



This preview shows how white text looks on a background with the CIELCh color 72, 10.067, 23.294.

Color Blindness Simulation

Color vision deficiency is a very complex topic, and I could not describe the different causes any better than Wikipedia does, so if you want to learn more, you should check out their [article about color blindness](#).

Dichromacy



Original Color


72, 10.067, 23.294

Protanopia

72, 2.865, 68.488

Deuteranopia

72, 9.673, 23.385



Tritanopia
72, 13.030, 347.816

Trichromacy



Original Color
72, 10.067, 23.294

Protanomaly
72, 5.224, 37.826

Deuteranomaly
72, 9.673, 23.385

Tritanomaly
72, 10.966, 0.143

Monochromacy



Original Color
72, 10.067, 23.294

Achromatopsia
73, 0.009, 296.813

Achromatomaly
72, 3.785, 19.595

CSS Examples

Text

The CSS property to change the color of the text to CIELCh 72, 10.067, 23.294 is called "color". The color property can be set on classes, ids or directly on the HTML element.

This example shows how text in the color `rgb(197, 171, 170)` looks like.

```
.text, #text, p{  
    color:rgb(197, 171, 170)  
}
```

If you want to add a text shadow in that color use the text-shadow property, you can generate a text shadow directly with our [CSS Text Shadow Generator](#).

Here you see how black text with a 4 pixel rgb(197, 171, 170) colored shadow looks like.

```
.shadow{ text-shadow: 4px 4px 2px rgb(197, 171, 170) }
```

Border

The CSS property to change the border of an element to CIELCh 72, 10.067, 23.294 is called "border". The border property can be set on classes, ids or directly on the HTML element.

This example shows the color as border, it can be applied via the CSS property "border" or "border-color".

```
.border, #border, table{ border:4px solid rgb(197, 171, 170) }
```

If only the border color should be changed use the property `border-color`.

```
.border{ border-color:rgb(197, 171, 170) }
```

If you want to add a box shadow in that color use:

Here you see how a box with a 4 pixel `rgb(197, 171, 170)` colored shadow looks like.

```
.boxshadow{ -moz-box-shadow:4px 4px 4px  
4px rgb(197, 171, 170); -webkit-box-  
shadow:4px 4px 4px 4px rgb(197, 171, 170);  
box-shadow:4px 4px 4px 4px rgb(197, 171,  
170) }
```

Background

The CSS property to change the background color of an element to CIELCh 72, 10.067, 23.294 is called "background". The background property can be set on classes, ids or directly on the HTML element.

```
.background, #background, body{  
background: rgb(197, 171, 170) }
```

If only the background color should be changed can be used:

```
.background{ background-color: rgb(197,  
171, 170) }
```

This example shows the color as background, it is applied via the CSS property "background".

To optimize and compress your CSS code, you can use our [online CSS compressor and optimizer](#) based on csstidy. If you want to create a linear or radial gradient as background or border, check our [CSS Gradient Generator](#).

Hey! You found this booklet interesting? Support Converting Colors with the new Membership Option!

The pro membership hides all ads, plus gives you double the colors in the color bucket, and more awesome pro features!

[Learn more, Memberships starting at \\$2.50/m!](#)

**Follow me
on Twitter!**

@ConvertingColor