

Converting Colors

CIELCh(72, 10.641, 13.546)

Have a look what the booklet for
CIELCh(72, 10.641, 13.546) contains.

CIELCh(72, 10.447, 14.347)	3
<i>Conversions</i>	4
<i>Details</i>	6
<i>Harmonies</i>	11
<i>Previews</i>	20
<i>Color Blindness Simulation</i>	23
<i>CSS Examples</i>	26

Color

CIELCh(72, 10.447, 14.347)

Conversions

Conversions Part 1

Format	Color
Hex	C5AAAC
RGB	197, 170, 172
RGB Percent	77%, 67%, 67%
CMY	0.2270, 0.3329, 0.3251
CMYK	0.00, 0.14, 0.13, 0.23
HSL	356°, 19%, 72%
HSV	356°, 14%, 77%
XYZ	44.9078, 43.6590, 45.1453
YIQ	178.3010, 15.4500, 6.3460

Conversions

Conversions Part 2

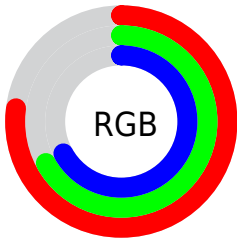
Format	Color
RYB	197, 170, 172
Decimal	12954284
CIELab	72.00, 10.12, 2.59
CIELCh	72, 10.447, 14.347
Yxy	43.6590, 0.3359, 0.3265
Android (android.graphics.Color)	4291144364 (0xFFC5AAAC)
YUV	178.3010, -3.1064, 16.3990
Hunter-Lab	66.0750, 5.6861, 5.7430

Details

The CIELCh color $72, 10.447, 14.347$ is a light color, and the websafe version is hex `CC9999`. A complement of this color would be $78, 9.690, 192.350$, and the grayscale version is $73, 0.009, 296.813$.

A 20% lighter version of the original color is $92, 10.614, 14.552$, and $52, 10.385, 14.215$ is the 20% darker color. If you saturate the color by 10%, you get $67, 18.689, 15.428$, and if you desaturate by 10%, it is $78, 2.725, 13.360$.

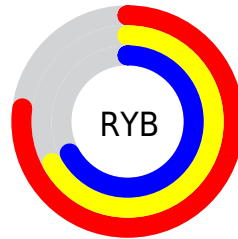
Distribution



Red (77%)

Green (67%)

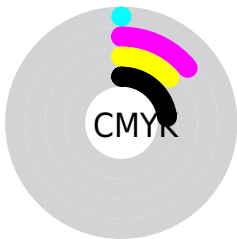
Blue (67%)



Red (77%)

Yellow (67%)

Blue (67%)

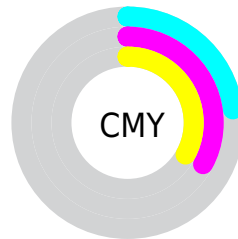


Cyan (0%)

Magenta (14%)

Yellow (13%)

Black (23%)



Cyan (23%)

Magenta (33%)

Yellow (33%)

Brightness & Saturation Gradients

These gradients show how the CIELCh color 72, 10.447, 14.347 changes by changing the brightness by 10 percent. The first figure shows a shift by +10% for each color and the second figure -10%.

Similar to the brightness gradients but the following saturation gradients show a change of the CIELCh color 72, 10.447, 14.347 by changing the saturation by 10% instead.

■ 72, 10.447, 14.347

■ 72, 10.447, 14.347

■ 100, 10.447,
14.347

■ 62, 10.447, 14.347

■ 92, 10.447, 14.347

■ 52, 10.447, 14.347

■ 42, 10.447, 14.347

■ 32, 10.447, 14.347

■ 22, 10.447, 14.347

■ 12, 10.447, 14.347

■ 2, 10.447, 14.347

■ 0, 10.447, 14.347

■ 72, 10.447, 14.347

■ 72, 10.447, 14.347

67, 18.689, 15.428

78, 2.725, 13.360

61, 27.423, 16.750

83, 4.480, 192.975

57, 36.549, 18.420

89, 11.199,
192.316

52, 45.887, 20.552

94, 17.475,
191.801

48, 55.174, 23.271

45, 64.097, 26.672

96, 18.978,
198.252

43, 72.331, 30.711

42, 79.431, 34.996

41, 83.092, 37.252

Harmonies

Complementary

The Complementary color scheme is a pair of colors which are on the opposite of each other on the color wheel.



72, 10.447, 14.347



78, 9.690, 192.350

Rectangle

The Rectangle color scheme consists of four colors that form a rectangle on the color wheel.



72, 10.447, 14.347



72, 10.447, 64.347



72, 10.447, 194.347



72, 10.447, 244.347

Sweetspot

The Sweet Spot groups the original color and five complimentary colors.



72, 10.445, 14.356



97, 3.638, 13.406



73, 17.301, 322.842



51, 2.592, 13.494



0, 0.000, 0.000



53, 0.007, 296.813

Same Dimension

The Same Dimension uses a secret algorithm to generate beautiful new colors.



72, 10.445, 14.356



89, 15.170, 14.611



75, 8.585, 64.404



39, 4.292, 13.944



34, 71.739, 36.695



3, 15.935, 15.574

Inverse Universe

The Inverse Universe completely reimagines the original color for something new.



72, 10.445, 14.356



89, 15.170, 14.611



75, 8.144, 247.591



39, 4.292, 13.944



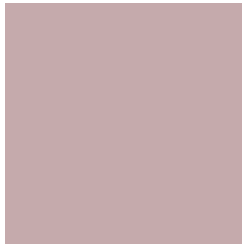
34, 71.739, 36.695



3, 15.935, 15.574

Previews

White Background



This preview shows how the CIELCh color 72, 10.447, 14.347 looks on a white background.

Color Contrast Check

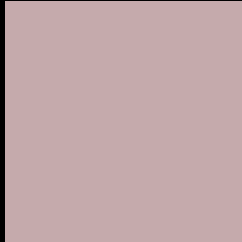
Large Text (above 18pt) WCAG AA × Fail

Any Text WCAG AA × Fail

Large Text (above 18pt) WCAG AAA × Fail

Any Text WCAG AAA × Fail

Black Background



This preview shows how the CIELCh color 72, 10.447, 14.347 looks on a black background.

Color Contrast Check

Large Text (above 18pt) WCAG AA ✓ Pass

Any Text WCAG AA ✓ Pass

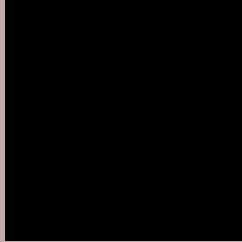
Large Text (above 18pt) WCAG AAA ✓ Pass

Any Text WCAG AAA ✓ Pass

If you want to check with other color combinations, try the [Color Contrast Checker](#).

CIELCh 72, 10.447, 14.347

Background



This preview shows how black text looks on a background with the CIELCh color 72, 10.447, 14.347.



This preview shows how white text looks on a background with the CIELCh color 72, 10.447, 14.347.

Color Blindness Simulation

Color vision deficiency is a very complex topic, and I could not describe the different causes any better than Wikipedia does, so if you want to learn more, you should check out their [article about color blindness](#).

Dichromacy



Original Color


72, 10.447, 14.347

Protanopia

72, 1.593, 39.106

Deuteranopia

72, 9.240, 16.808



Tritanopia
72, 13.030, 347.816

Trichromacy



Original Color
72, 10.447, 14.347

Protanomaly
72, 4.556, 19.685

Deuteranomaly
72, 9.631, 16.983

Tritanomaly
72, 12.065, 356.641

Monochromacy



Original Color
72, 10.447, 14.347

Achromatopsia
73, 0.009, 296.813

Achromatomaly
72, 3.822, 11.450

CSS Examples

Text

The CSS property to change the color of the text to CIELCh 72, 10.447, 14.347 is called "color". The color property can be set on classes, ids or directly on the HTML element.

This example shows how text in the color `rgb(197, 170, 172)` looks like.

```
.text, #text, p{  
    color:rgb(197, 170, 172)  
}
```

If you want to add a text shadow in that color use the text-shadow property, you can generate a text shadow directly with our [CSS Text Shadow Generator](#).

Here you see how black text with a 4 pixel rgb(197, 170, 172) colored shadow looks like.

```
.shadow{ text-shadow: 4px 4px 2px rgb(197, 170, 172) }
```

Border

The CSS property to change the border of an element to CIELCh 72, 10.447, 14.347 is called "border". The border property can be set on classes, ids or directly on the HTML element.

This example shows the color as border, it can be applied via the CSS property "border" or "border-color".

```
.border, #border, table{ border:4px solid rgb(197, 170, 172) }
```

If only the border color should be changed use the property border-color.

```
.border{ border-color:rgb(197, 170, 172) }
```

If you want to add a box shadow in that color use:

Here you see how a box with a 4 pixel rgb(197, 170, 172) colored shadow looks like.

```
.boxshadow{ -moz-box-shadow:4px 4px 4px  
4px rgb(197, 170, 172); -webkit-box-  
shadow:4px 4px 4px 4px rgb(197, 170, 172);  
box-shadow:4px 4px 4px 4px rgb(197, 170,  
172) }
```

Background

The CSS property to change the background color of an element to CIELCh 72, 10.447, 14.347 is called "background". The background property can be set on classes, ids or directly on the HTML element.

```
.background, #background, body{  
background: rgb(197, 170, 172) }
```

If only the background color should be changed can be used:

```
.background{ background-color: rgb(197,  
170, 172) }
```

This example shows the color as background, it is applied via the CSS property "background".

To optimize and compress your CSS code, you can use our [online CSS compressor and optimizer](#) based on csstidy. If you want to create a linear or radial gradient as background or border, check our [CSS Gradient Generator](#).

Hey! You found this booklet interesting? Support Converting Colors with the new Membership Option!

The pro membership hides all ads, plus gives you double the colors in the color bucket, and more awesome pro features!

[Learn more, Memberships starting at \\$2.50/m!](#)

**Follow me
on Twitter!**

@ConvertingColor