

Converting Colors

CIELCh(72, 10.694, 37.833)

Have a look what the booklet for
CIELCh(72, 10.694, 37.833) contains.

CIELCh(72, 10.680, 37.832)	3
<i>Conversions</i>	4
<i>Details</i>	6
<i>Harmonies</i>	11
<i>Previews</i>	20
<i>Color Blindness Simulation</i>	23
<i>CSS Examples</i>	26

Color

CIELCh(72, 10.680, 37.832)

Conversions

Conversions Part 1

Format	Color
Hex	C5ABA5
RGB	197, 171, 165
RGB Percent	77%, 67%, 65%
CMY	0.2278, 0.3298, 0.3533
CMYK	0.00, 0.13, 0.16, 0.23
HSL	11°, 22%, 71%
HSV	11°, 16%, 77%
XYZ	44.3271, 43.6590, 41.6421
YIQ	178.0900, 17.4220, 3.6460

Conversions

Conversions Part 2

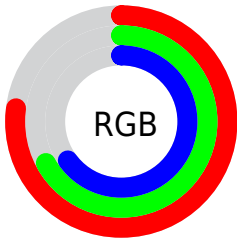
Format	Color
RYB	197, 172, 165
Decimal	12954533
CIELab	72.00, 8.44, 6.55
CIELCh	72, 10.680, 37.832
Yxy	43.6590, 0.3420, 0.3368
Android (android.graphics.Color)	4291144613 (0xFFC5ABA5)
YUV	178.0900, -6.4534, 16.5841
Hunter-Lab	66.0750, 4.1173, 8.8864

Details

The CIELCh color $72, 10.680, 37.832$ is a light color, and the websafe version is hex `CC9999`. A complement of this color would be $76, 9.610, 218.546$, and the grayscale version is $73, 0.009, 296.813$.

A 20% lighter version of the original color is $92, 10.774, 36.647$, and $52, 10.729, 39.164$ is the 20% darker color. If you saturate the color by 10%, you get $68, 17.984, 37.920$, and if you desaturate by 10%, it is $77, 3.942, 37.826$.

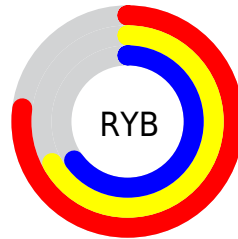
Distribution



Red (77%)

Green (67%)

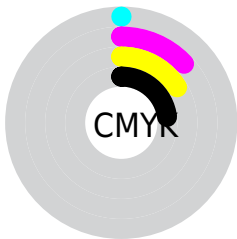
Blue (65%)



Red (77%)

Yellow (67%)

Blue (65%)

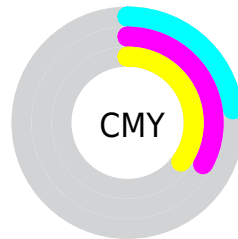


Cyan (0%)

Magenta (13%)

Yellow (16%)

Black (23%)



Cyan (23%)

Magenta (33%)

Yellow (35%)

Brightness & Saturation Gradients

These gradients show how the CIELCh color 72, 10.680, 37.832 changes by changing the brightness by 10 percent. The first figure shows a shift by +10% for each color and the second figure -10%.

Similar to the brightness gradients but the following saturation gradients show a change of the CIELCh color 72, 10.680, 37.832 by changing the saturation by 10% instead.

72, 10.680, 37.832

72, 10.680, 37.832

100, 10.680,
37.832

62, 10.680, 37.832

92, 10.680, 37.832

52, 10.680, 37.832

42, 10.680, 37.832

32, 10.680, 37.832

22, 10.680, 37.832

12, 10.680, 37.832

2, 10.680, 37.832

0, 10.680, 37.832

72, 10.680, 37.832

72, 10.680, 37.832

68, 17.984, 37.920

77, 3.942, 37.826

63, 25.891, 38.143

81, 2.276, 218.360

59, 34.410, 38.562

86, 8.028, 218.419

55, 43.502, 39.214

91, 13.366,
218.669

52, 53.050, 40.117

95, 17.749,
205.219

48, 62.778, 41.217

46, 72.076, 42.285

96, 19.042,
198.248

44, 79.672, 42.763

43, 82.216, 43.031

Harmonies

Complementary

The Complementary color scheme is a pair of colors which are on the opposite of each other on the color wheel.



72, 10.680, 37.832



76, 9.610, 218.546

Rectangle

The Rectangle color scheme consists of four colors that form a rectangle on the color wheel.



72, 10.680, 37.832



72, 10.680, 87.832



72, 10.680, 217.832



72, 10.680, 267.832

Sweetspot

The Sweet Spot groups the original color and five complimentary colors.



72, 10.679, 37.844



97, 3.871, 37.808



71, 18.547, 330.938



51, 2.649, 37.820



0, 0.000, 0.000



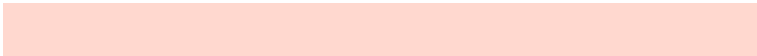
53, 0.007, 296.813

Same Dimension

The Same Dimension uses a secret algorithm to generate beautiful new colors.



72, 10.679, 37.844



89, 15.599, 37.855



76, 12.359, 90.405



40, 3.653, 37.840



36, 71.177, 43.326



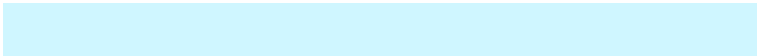
5, 14.249, 30.328

Inverse Universe

The Inverse Universe completely reimagines the original color for something new.



76, 9.610, 218.546



94, 13.736, 218.663



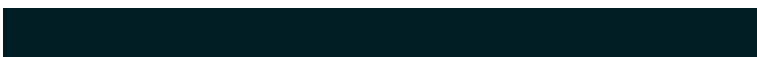
71, 12.360, 274.658



41, 3.445, 218.355



51, 31.287, 232.480



9, 11.207, 224.041

Previews

White Background



This preview shows how the CIELCh color 72, 10.680, 37.832 looks on a white background.

Color Contrast Check

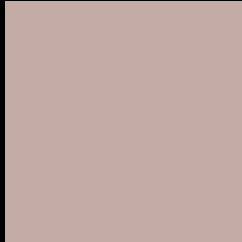
Large Text (above 18pt) WCAG AA × Fail

Any Text WCAG AA × Fail

Large Text (above 18pt) WCAG AAA × Fail

Any Text WCAG AAA × Fail

Black Background



This preview shows how the CIELCh color 72, 10.680, 37.832 looks on a black background.

Color Contrast Check

Large Text (above 18pt) WCAG AA ✓ Pass

Any Text WCAG AA ✓ Pass

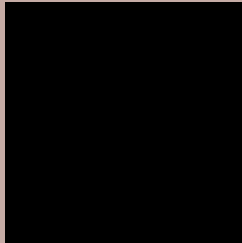
Large Text (above 18pt) WCAG AAA ✓ Pass

Any Text WCAG AAA ✓ Pass

If you want to check with other color combinations, try the [Color Contrast Checker](#).

CIELCh 72, 10.680, 37.832

Background



This preview shows how black text looks on a background with the CIELCh color 72, 10.680, 37.832.



This preview shows how white text looks on a background with the CIELCh color 72, 10.680, 37.832.

Color Blindness Simulation

Color vision deficiency is a very complex topic, and I could not describe the different causes any better than Wikipedia does, so if you want to learn more, you should check out their [article about color blindness](#).

Dichromacy



Original Color

72, 10.680, 37.832

Protanopia

72, 4.893, 81.721

Deuteranopia

72, 11.292, 34.096



Tritanopia
72, 13.960, 347.713

Trichromacy



Original Color
72, 10.680, 37.832

Protanomaly
72, 6.280, 56.794

Deuteranomaly
72, 11.292, 34.096

Tritanomaly
72, 11.707, 1.550

Monochromacy



Original Color
72, 10.680, 37.832

Achromatopsia
73, 0.009, 296.813

Achromatomaly
72, 3.944, 35.526

CSS Examples

Text

The CSS property to change the color of the text to CIELCh 72, 10.680, 37.832 is called "color". The color property can be set on classes, ids or directly on the HTML element.

This example shows how text in the color `rgb(197, 171, 165)` looks like.

```
.text, #text, p{  
    color:rgb(197, 171, 165)  
}
```

If you want to add a text shadow in that color use the text-shadow property, you can generate a text shadow directly with our [CSS Text Shadow Generator](#).

Here you see how black text with a 4 pixel rgb(197, 171, 165) colored shadow looks like.

```
.shadow{ text-shadow: 4px 4px 2px rgb(197, 171, 165) }
```

Border

The CSS property to change the border of an element to CIELCh 72, 10.680, 37.832 is called "border". The border property can be set on classes, ids or directly on the HTML element.

This example shows the color as border, it can be applied via the CSS property "border" or "border-color".

```
.border, #border, table{ border:4px solid rgb(197, 171, 165) }
```

If only the border color should be changed use the property `border-color`.

```
.border{ border-color:rgb(197, 171, 165) }
```

If you want to add a box shadow in that color use:

Here you see how a box with a 4 pixel `rgb(197, 171, 165)` colored shadow looks like.

```
.boxshadow{ -moz-box-shadow:4px 4px 4px  
4px rgb(197, 171, 165); -webkit-box-  
shadow:4px 4px 4px 4px rgb(197, 171, 165);  
box-shadow:4px 4px 4px 4px rgb(197, 171,  
165) }
```

Background

The CSS property to change the background color of an element to CIELCh 72, 10.680, 37.832 is called "background". The background property can be set on classes, ids or directly on the HTML element.

```
.background, #background, body{  
background: rgb(197, 171, 165) }
```

If only the background color should be changed can be used:

```
.background{ background-color: rgb(197,  
171, 165) }
```

This example shows the color as background, it is applied via the CSS property "background".

To optimize and compress your CSS code, you can use our [online CSS compressor and optimizer](#) based on csstidy. If you want to create a linear or radial gradient as background or border, check our [CSS Gradient Generator](#).

Hey! You found this booklet interesting? Support Converting Colors with the new Membership Option!

The pro membership hides all ads, plus gives you double the colors in the color bucket, and more awesome pro features!

[Learn more, Memberships starting at \\$2.50/m!](#)

**Follow me
on Twitter!**

@ConvertingColor