

Converting Colors

CIELCh(72, 11.555, 35.643)

Have a look what the booklet for
CIELCh(72, 11.555, 35.643) contains.

CIELCh(72, 11.681, 33.655)	3
<i>Conversions</i>	4
<i>Details</i>	6
<i>Harmonies</i>	11
<i>Previews</i>	20
<i>Color Blindness Simulation</i>	23
<i>CSS Examples</i>	26

Color

CIELCh(72, 11.681, 33.655)

Conversions

Conversions Part 1

Format	Color
Hex	C7AAA5
RGB	199, 170, 165
RGB Percent	78%, 67%, 65%
CMY	0.2192, 0.3330, 0.3526
CMYK	0.00, 0.15, 0.17, 0.22
HSL	9°, 23%, 71%
HSV	9°, 17%, 78%
XYZ	44.7702, 43.6590, 41.7085
YIQ	178.1010, 18.8890, 4.5930

Conversions

Conversions Part 2

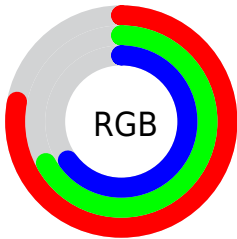
Format	Color
R _Y B	199, 171, 165
Decimal	13085349
CIE Lab	72.00, 9.72, 6.47
CIE LCh	72, 11.681, 33.655
Yxy	43.6590, 0.3440, 0.3355
Android (android.graphics.Color)	4291275429 (0xFFC7AAA5)
YUV	178.1010, -6.4588, 18.3284
Hunter-Lab	66.0750, 5.3145, 8.8269

Details

The CIELCh color $72, 11.681, 33.655$ is a light color, and the websafe version is hex `CC9999`. A complement of this color would be $77, 10.426, 213.727$, and the grayscale version is $73, 0.009, 296.813$.

A 20% lighter version of the original color is $92, 11.362, 33.158$, and $52, 11.797, 34.681$ is the 20% darker color. If you saturate the color by 10%, you get $67, 19.308, 33.970$, and if you desaturate by 10%, it is $77, 4.644, 33.455$.

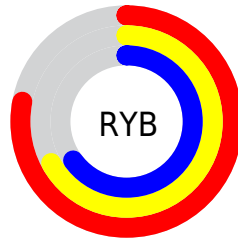
Distribution



Red (78%)

Green (67%)

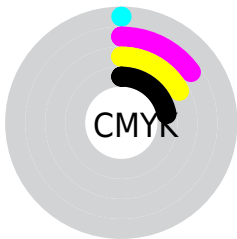
Blue (65%)



Red (78%)

Yellow (67%)

Blue (65%)

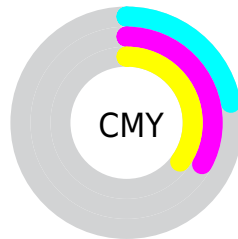


Cyan (0%)

Magenta (15%)

Yellow (17%)

Black (22%)



Cyan (22%)

Magenta (33%)

Yellow (35%)


Brightness & Saturation Gradients

These gradients show how the CIELCh color 72, 11.681, 33.655 changes by changing the brightness by 10 percent. The first figure shows a shift by +10% for each color and the second figure -10%.

Similar to the brightness gradients but the following saturation gradients show a change of the CIELCh color 72, 11.681, 33.655 by changing the saturation by 10% instead.

 72, 11.681, 33.655

 72, 11.681, 33.655

 100, 11.681,
33.655

 62, 11.681, 33.655

 92, 11.681, 33.655

 52, 11.681, 33.655

 42, 11.681, 33.655

 32, 11.681, 33.655

 22, 11.681, 33.655

 12, 11.681, 33.655

 2, 11.681, 33.655

 0, 11.681, 33.655

 72, 11.681, 33.655

 72, 11.681, 33.655

67, 19.308, 33.970

77, 4.644, 33.455

63, 27.557, 34.455

82, 1.843, 213.845

58, 36.418, 35.176

87, 7.835, 213.671

54, 45.831, 36.183

92, 13.386,
213.757

51, 55.643, 37.502

96, 18.375,
198.299

48, 65.541, 39.078

45, 74.847, 40.650

96, 18.377,
198.290

43, 82.211, 41.613

43, 84.142, 41.995

Harmonies

Complementary

The Complementary color scheme is a pair of colors which are on the opposite of each other on the color wheel.



72, 11.681, 33.655



77, 10.426, 213.727

Rectangle

The Rectangle color scheme consists of four colors that form a rectangle on the color wheel.



72, 11.681, 33.655



72, 11.681, 83.655



72, 11.681, 213.655



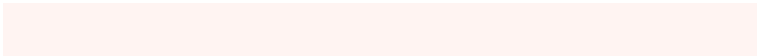
72, 11.681, 263.655

Sweetspot

The Sweet Spot groups the original color and five complimentary colors.



72, 11.680, 33.666



97, 3.978, 33.394



72, 20.377, 329.304



51, 2.722, 33.419



0, 0.000, 0.000



53, 0.007, 296.813

Same Dimension

The Same Dimension uses a secret algorithm to generate beautiful new colors.



72, 11.680, 33.666



88, 16.947, 33.748



76, 12.524, 86.183



39, 3.753, 33.506



35, 72.224, 42.207



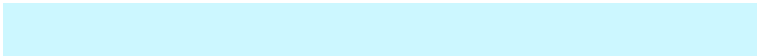
4, 14.554, 27.773

Inverse Universe

The Inverse Universe completely reimagines the original color for something new.



77, 10.426, 213.727



95, 14.777, 213.785



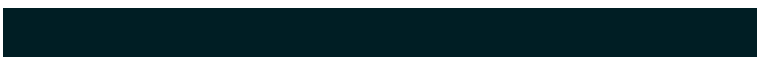
72, 12.395, 270.780



41, 3.535, 213.667



53, 31.239, 223.757



10, 11.419, 217.117

Previews

White Background



This preview shows how the CIELCh color 72, 11.681, 33.655 looks on a white background.

Color Contrast Check

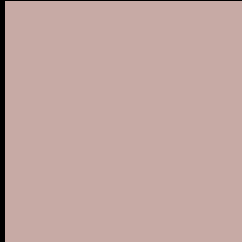
Large Text (above 18pt) WCAG AA × Fail

Any Text WCAG AA × Fail

Large Text (above 18pt) WCAG AAA × Fail

Any Text WCAG AAA × Fail

Black Background



This preview shows how the CIE LCh color 72, 11.681, 33.655 looks on a black background.

Color Contrast Check

Large Text (above 18pt) WCAG AA ✓ Pass

Any Text WCAG AA ✓ Pass

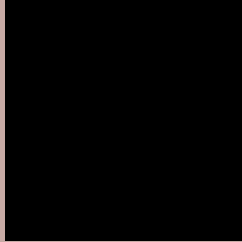
Large Text (above 18pt) WCAG AAA ✓ Pass

Any Text WCAG AAA ✓ Pass

If you want to check with other color combinations, try the [Color Contrast Checker](#).

CIELCh 72, 11.681, 33.655

Background



This preview shows how black text looks on a background with the CIELCh color 72, 11.681, 33.655.



This preview shows how white text looks on a background with the CIELCh color 72, 11.681, 33.655.

Color Blindness Simulation

Color vision deficiency is a very complex topic, and I could not describe the different causes any better than Wikipedia does, so if you want to learn more, you should check out their [article about color blindness](#).

Dichromacy



Original Color

72, 11.681, 33.655

Protanopia

72, 4.893, 81.721

Deuteranopia

72, 11.062, 37.231



Tritanopia
72, 14.349, 351.314

Trichromacy



Original Color
72, 11.681, 33.655

Protanomaly
72, 6.597, 54.759

Deuteranomaly
72, 11.062, 37.231

Tritanomaly
72, 12.313, 5.215

Monochromacy



Original Color
72, 11.681, 33.655

Achromatopsia
73, 0.009, 296.813

Achromatomaly
72, 4.316, 34.159

CSS Examples

Text

The CSS property to change the color of the text to CIELCh 72, 11.681, 33.655 is called "color". The color property can be set on classes, ids or directly on the HTML element.

This example shows how text in the color `rgb(199, 170, 165)` looks like.

```
.text, #text, p{  
    color:rgb(199, 170, 165)  
}
```

If you want to add a text shadow in that color use the text-shadow property, you can generate a text shadow directly with our [CSS Text Shadow Generator](#).

Here you see how black text with a 4 pixel rgb(199, 170, 165) colored shadow looks like.

```
.shadow{ text-shadow: 4px 4px 2px rgb(199, 170, 165) }
```

Border

The CSS property to change the border of an element to CIELCh 72, 11.681, 33.655 is called "border". The border property can be set on classes, ids or directly on the HTML element.

This example shows the color as border, it can be applied via the CSS property "border" or "border-color".

```
.border, #border, table{ border:4px solid rgb(199, 170, 165) }
```

If only the border color should be changed use the property `border-color`.

```
.border{ border-color:rgb(199, 170, 165) }
```

If you want to add a box shadow in that color use:

Here you see how a box with a 4 pixel `rgb(199, 170, 165)` colored shadow looks like.

```
.boxshadow{ -moz-box-shadow:4px 4px 4px  
4px rgb(199, 170, 165); -webkit-box-  
shadow:4px 4px 4px 4px rgb(199, 170, 165);  
box-shadow:4px 4px 4px 4px rgb(199, 170,  
165) }
```

Background

The CSS property to change the background color of an element to CIELCh 72, 11.681, 33.655 is called "background". The background property can be set on classes, ids or directly on the HTML element.

```
.background, #background, body{  
background: rgb(199, 170, 165) }
```

If only the background color should be changed can be used:

```
.background{ background-color: rgb(199,  
170, 165) }
```

This example shows the color as background, it is applied via the CSS property "background".

To optimize and compress your CSS code, you can use our [online CSS compressor and optimizer](#) based on csstidy. If you want to create a linear or radial gradient as background or border, check our [CSS Gradient Generator](#).

Hey! You found this booklet interesting? Support Converting Colors with the new Membership Option!

The pro membership hides all ads, plus gives you double the colors in the color bucket, and more awesome pro features!

[Learn more, Memberships starting at \\$2.50/m!](#)

**Follow me
on Twitter!**

@ConvertingColor