

Converting Colors

CIELCh(72, 12.363, 19.076)

Have a look what the booklet for
CIELCh(72, 12.363, 19.076) contains.

CIELCh(72, 12.414, 17.974)	3
<i>Conversions</i>	4
<i>Details</i>	6
<i>Harmonies</i>	11
<i>Previews</i>	20
<i>Color Blindness Simulation</i>	23
<i>CSS Examples</i>	26

Color

CIELCh(72, 12.414, 17.974)

Conversions

Conversions Part 1

Format	Color
Hex	C9A9AA
RGB	201, 169, 170
RGB Percent	79%, 66%, 67%
CMY	0.2120, 0.3375, 0.3336
CMYK	0.00, 0.16, 0.15, 0.21
HSL	358°, 23%, 73%
HSV	358°, 16%, 79%
XYZ	45.4939, 43.6590, 44.0267
YIQ	178.6820, 18.7510, 7.0950

Conversions

Conversions Part 2

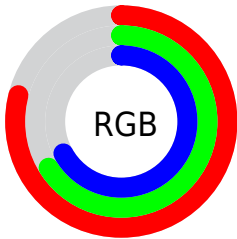
Format	Color
R _Y B	201, 169, 170
Decimal	13216170
CIE Lab	72.00, 11.81, 3.83
CIE LCh	72, 12.414, 17.974
Yxy	43.6590, 0.3416, 0.3278
Android (android.graphics.Color)	4291406250 (0xFFC9A9AA)
YUV	178.6820, -4.2802, 19.5729
Hunter-Lab	66.0750, 7.2696, 6.7467

Details

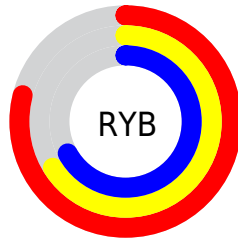
The CIELCh color $72, 12.414, 17.974$ is a light color, and the websafe version is hex `CC9999`. A complement of this color would be $79, 11.270, 195.881$, and the grayscale version is $73, 0.009, 296.813$.

A 20% lighter version of the original color is $92, 11.347, 17.568$, and $52, 12.514, 18.201$ is the 20% darker color. If you saturate the color by 10%, you get $67, 20.958, 19.024$, and if you desaturate by 10%, it is $78, 4.448, 17.095$.

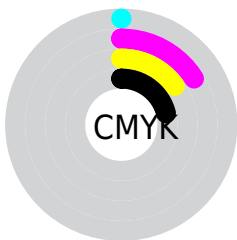
Distribution



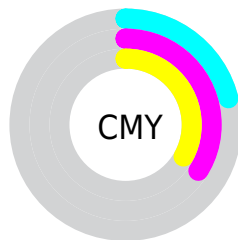
- Red (79%)
- Green (66%)
- Blue (67%)



- Red (79%)
- Yellow (66%)
- Blue (67%)



- Cyan (0%)
- Magenta (16%)
- Yellow (15%)
- Black (21%)



- Cyan (21%)
- Magenta (34%)
- Yellow (33%)

Brightness & Saturation Gradients

These gradients show how the CIELCh color 72, 12.414, 17.974 changes by changing the brightness by 10 percent. The first figure shows a shift by +10% for each color and the second figure -10%.

Similar to the brightness gradients but the following saturation gradients show a change of the CIELCh color 72, 12.414, 17.974 by changing the saturation by 10% instead.

72, 12.414, 17.974

72, 12.414, 17.974

100, 12.414,
17.974

62, 12.414, 17.974

92, 12.414, 17.974

52, 12.414, 17.974

42, 12.414, 17.974

32, 12.414, 17.974

22, 12.414, 17.974

12, 12.414, 17.974

2, 12.414, 17.974

0, 12.414, 17.974

72, 12.414, 17.974

72, 12.414, 17.974

67, 20.958, 19.024

78, 4.448, 17.095

61, 30.052, 20.342

83, 2.947, 196.759

57, 39.595, 22.038

89, 9.810, 196.104

52, 49.397, 24.227

95, 16.191,
195.650

48, 59.181, 27.018

96, 17.816,
198.326

45, 68.598, 30.444

43, 77.174, 34.302

42, 83.959, 37.858

42, 86.055, 38.865

Harmonies

Complementary

The Complementary color scheme is a pair of colors which are on the opposite of each other on the color wheel.



72, 12.414, 17.974



79, 11.270, 195.881

Rectangle

The Rectangle color scheme consists of four colors that form a rectangle on the color wheel.



72, 12.414, 17.974



72, 12.414, 67.974



72, 12.414, 197.974



72, 12.414, 247.974

Sweetspot

The Sweet Spot groups the original color and five complimentary colors.



72, 12.412, 17.983



97, 4.542, 17.013



73, 20.755, 324.373



51, 3.107, 17.082



0, 0.000, 0.000



53, 0.007, 296.813

Same Dimension

The Same Dimension uses a secret algorithm to generate beautiful new colors.



72, 12.412, 17.983



87, 18.196, 18.306



76, 10.410, 69.826



39, 4.279, 17.400



34, 73.396, 38.510



3, 15.897, 17.789

Inverse Universe

The Inverse Universe completely reimagines the original color for something new.



72, 12.412, 17.983



87, 18.196, 18.306



75, 9.909, 253.876



39, 4.279, 17.400



34, 73.396, 38.510



3, 15.897, 17.789

Previews

White Background



This preview shows how the CIELCh color 72, 12.414, 17.974 looks on a white background.

Color Contrast Check

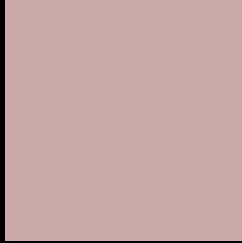
Large Text (above 18pt) WCAG AA × Fail

Any Text WCAG AA × Fail

Large Text (above 18pt) WCAG AAA × Fail

Any Text WCAG AAA × Fail

Black Background



This preview shows how the CIELCh color 72, 12.414, 17.974 looks on a black background.

Color Contrast Check

Large Text (above 18pt) WCAG AA ✓ Pass

Any Text WCAG AA ✓ Pass

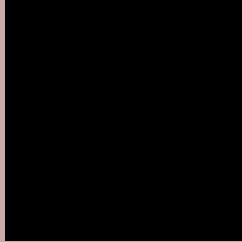
Large Text (above 18pt) WCAG AAA ✓ Pass

Any Text WCAG AAA ✓ Pass

If you want to check with other color combinations, try the [Color Contrast Checker](#).

CIELCh 72, 12.414, 17.974

Background



This preview shows how black text looks on a background with the CIELCh color 72, 12.414, 17.974.



This preview shows how white text looks on a background with the CIELCh color 72, 12.414, 17.974.

Color Blindness Simulation

Color vision deficiency is a very complex topic, and I could not describe the different causes any better than Wikipedia does, so if you want to learn more, you should check out their [article about color blindness](#).

Dichromacy



Original Color


72, 12.414, 17.974

Protanopia

72, 1.846, 55.193

Deuteranopia

72, 9.673, 23.385



Tritanopia
72, 15.036, 352.853

Trichromacy



Original Color
72, 12.414, 17.974

Protanomaly
72, 5.718, 19.809

Deuteranomaly
72, 10.831, 20.305

Tritanomaly
72, 13.713, 2.249

Monochromacy



Original Color
72, 12.414, 17.974

Achromatopsia
73, 0.009, 296.813

Achromatomaly
72, 4.578, 12.898

CSS Examples

Text

The CSS property to change the color of the text to CIELCh 72, 12.414, 17.974 is called "color". The color property can be set on classes, ids or directly on the HTML element.

This example shows how text in the color `rgb(201, 169, 170)` looks like.

```
.text, #text, p{  
    color:rgb(201, 169, 170)  
}
```

If you want to add a text shadow in that color use the text-shadow property, you can generate a text shadow directly with our [CSS Text Shadow Generator](#).

Here you see how black text with a 4 pixel rgb(201, 169, 170) colored shadow looks like.

```
.shadow{ text-shadow: 4px 4px 2px rgb(201, 169, 170) }
```

Border

The CSS property to change the border of an element to CIELCh 72, 12.414, 17.974 is called "border". The border property can be set on classes, ids or directly on the HTML element.

This example shows the color as border, it can be applied via the CSS property "border" or "border-color".

```
.border, #border, table{ border:4px solid rgb(201, 169, 170) }
```

If only the border color should be changed use the property `border-color`.

```
.border{ border-color:rgb(201, 169, 170) }
```

If you want to add a box shadow in that color use:

Here you see how a box with a 4 pixel `rgb(201, 169, 170)` colored shadow looks like.

```
.boxshadow{ -moz-box-shadow:4px 4px 4px  
4px rgb(201, 169, 170); -webkit-box-  
shadow:4px 4px 4px 4px rgb(201, 169, 170);  
box-shadow:4px 4px 4px 4px rgb(201, 169,  
170) }
```

Background

The CSS property to change the background color of an element to CIELCh 72, 12.414, 17.974 is called "background". The background property can be set on classes, ids or directly on the HTML element.

```
.background, #background, body{  
background: rgb(201, 169, 170) }
```

If only the background color should be changed can be used:

```
.background{ background-color: rgb(201,  
169, 170) }
```

This example shows the color as background, it is applied via the CSS property "background".

To optimize and compress your CSS code, you can use our [online CSS compressor and optimizer](#) based on csstidy. If you want to create a linear or radial gradient as background or border, check our [CSS Gradient Generator](#).

Hey! You found this booklet interesting? Support Converting Colors with the new Membership Option!

The pro membership hides all ads, plus gives you double the colors in the color bucket, and more awesome pro features!

[Learn more, Memberships starting at \\$2.50/m!](#)

**Follow me
on Twitter!**

@ConvertingColor