

Converting Colors

CIELCh(72, 13.051, 79.879)

Have a look what the booklet for
CIELCh(72, 13.051, 79.879) contains.

CIELCh(72, 13.065, 79.867)	3
<i>Conversions</i>	4
<i>Details</i>	6
<i>Harmonies</i>	11
<i>Previews</i>	20
<i>Color Blindness Simulation</i>	23
<i>CSS Examples</i>	26

Color

CIELCh(72, 13.065, 79.867)

Conversions

Conversions Part 1

Format	Color
Hex	BEAE99
RGB	190, 174, 153
RGB Percent	75%, 68%, 60%
CMY	0.2539, 0.3166, 0.3990
CMYK	0.00, 0.08, 0.19, 0.25
HSL	34°, 22%, 67%
HSV	34°, 19%, 75%
XYZ	42.2556, 43.6590, 36.4443
YIQ	176.3900, 16.2770, -3.1390

Conversions

Conversions Part 2

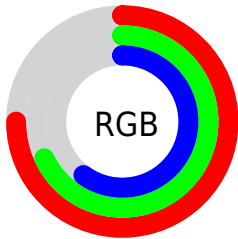
Format	Color
RYB	181, 190, 153
Decimal	12496537
CIELab	72.00, 2.30, 12.86
CIELCh	72, 13.065, 79.867
Yxy	43.6590, 0.3453, 0.3568
Android (android.graphics.Color)	4290686617 (0xFFBEAE99)
YUV	176.3900, -11.5313, 11.9360
Hunter-Lab	66.0750, -1.4788, 13.5505

Details

The CIELCh color $72, 13.065, 79.867$ is a light color, and the websafe version is hex 999999 . A complement of this color would be $69, 12.681, 265.197$, and the grayscale version is $72, 0.009, 296.813$.

A 20% lighter version of the original color is $92, 13.196, 78.533$, and $52, 13.076, 81.191$ is the 20% darker color. If you saturate the color by 10%, you get $69, 20.137, 78.564$, and if you desaturate by 10%, it is $75, 6.235, 81.141$.

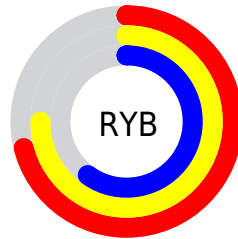
Distribution



Red (75%)

Green (68%)

Blue (60%)



Red (71%)

Yellow (75%)

Blue (60%)

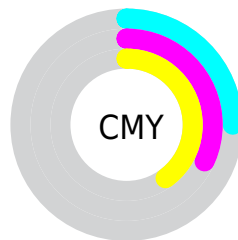


Cyan (0%)

Magenta (8%)

Yellow (19%)

Black (25%)



Cyan (25%)

Magenta (32%)

Yellow (40%)

Brightness & Saturation Gradients

These gradients show how the CIELCh color 72, 13.065, 79.867 changes by changing the brightness by 10 percent. The first figure shows a shift by +10% for each color and the second figure -10%.

Similar to the brightness gradients but the following saturation gradients show a change of the CIELCh color 72, 13.065, 79.867 by changing the saturation by 10% instead.

■ 72, 13.065, 79.867

■ 72, 13.065, 79.867

■ 100, 13.065,
79.867

■ 62, 13.065, 79.867

■ 92, 13.065, 79.867

■ 52, 13.065, 79.867

■ 42, 13.065, 79.867

■ 32, 13.065, 79.867

■ 22, 13.065, 79.867

■ 12, 13.065, 79.867

■ 2, 13.065, 79.867

■ 0, 13.065, 79.867

■ 72, 13.065, 79.867

■ 72, 13.065, 79.867

69, 20.137, 78.564

75, 6.235, 81.141

67, 27.443, 77.216

77, 0.363, 263.276

65, 34.945, 75.835

80, 6.746, 263.695

62, 42.542, 74.404

83, 12.932,
264.837

60, 50.019, 72.882

85, 18.942,
265.945

58, 56.959, 71.172

56, 62.660, 69.082

88, 19.303,
257.590

54, 66.663, 66.493

90, 17.737,
241.764

54, 66.886, 66.360

92, 17.654,
224.607

94, 19.034,
208.800

Harmonies

Complementary

The Complementary color scheme is a pair of colors which are on the opposite of each other on the color wheel.



72, 13.065, 79.867



69, 12.681, 265.197

Rectangle

The Rectangle color scheme consists of four colors that form a rectangle on the color wheel.



72, 13.065, 79.867



72, 13.065, 129.867



72, 13.065, 259.867



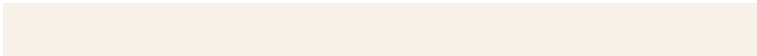
72, 13.065, 309.867

Sweetspot

The Sweet Spot groups the original color and five complimentary colors.



72, 13.066, 79.877



95, 4.866, 81.538



67, 16.697, 349.195



51, 3.258, 81.462



99, 0.012, 296.813



52, 0.007, 296.813

Same Dimension

The Same Dimension uses a secret algorithm to generate beautiful new colors.



72, 13.066, 79.877



90, 19.252, 79.367



76, 19.773, 111.134



39, 3.712, 81.153



45, 58.236, 66.899



6, 10.296, 67.477

Inverse Universe

The Inverse Universe completely reimagines the original color for something new.



69, 12.681, 265.197



85, 18.556, 265.871



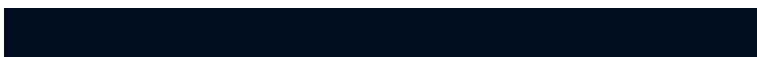
65, 20.669, 294.716



38, 3.668, 263.660



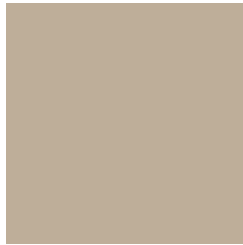
31, 56.904, 289.490



4, 12.340, 273.372

Previews

White Background



This preview shows how the CIELCh color 72, 13.065, 79.867 looks on a white background.

Color Contrast Check

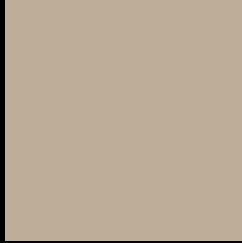
Large Text (above 18pt) WCAG AA × Fail

Any Text WCAG AA × Fail

Large Text (above 18pt) WCAG AAA × Fail

Any Text WCAG AAA × Fail

Black Background



This preview shows how the CIELCh color 72, 13.065, 79.867 looks on a black background.

Color Contrast Check

Large Text (above 18pt) WCAG AA ✓ Pass

Any Text WCAG AA ✓ Pass

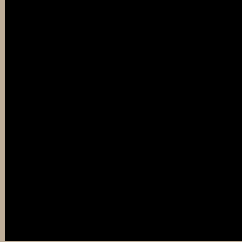
Large Text (above 18pt) WCAG AAA ✓ Pass

Any Text WCAG AAA ✓ Pass

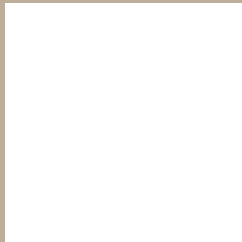
If you want to check with other color combinations, try the [Color Contrast Checker](#).

CIELCh 72, 13.065, 79.867

Background



This preview shows how black text looks on a background with the CIELCh color 72, 13.065, 79.867.



This preview shows how white text looks on a background with the CIELCh color 72, 13.065, 79.867.

Color Blindness Simulation

Color vision deficiency is a very complex topic, and I could not describe the different causes any better than Wikipedia does, so if you want to learn more, you should check out their [article about color blindness](#).

Dichromacy



Original Color

72, 13.065, 79.867

Protanopia

72, 12.434, 92.362

Deuteranopia

72, 15.578, 53.872



Tritanopia
72, 11.475, 342.439

Trichromacy



Original Color
72, 13.065, 79.867

Protanomaly
72, 12.339, 86.380

Deuteranomaly
72, 14.321, 62.671

Tritanomaly
72, 8.058, 20.039

Monochromacy



Original Color
72, 13.065, 79.867

Achromatopsia
72, 0.009, 296.813

Achromatomaly
72, 4.893, 81.721

CSS Examples

Text

The CSS property to change the color of the text to CIELCh 72, 13.065, 79.867 is called "color". The color property can be set on classes, ids or directly on the HTML element.

This example shows how text in the color `rgb(190, 174, 153)` looks like.

```
.text, #text, p{  
    color:rgb(190, 174, 153)  
}
```

If you want to add a text shadow in that color use the text-shadow property, you can generate a text shadow directly with our [CSS Text Shadow Generator](#).

Here you see how black text with a 4 pixel rgb(190, 174, 153) colored shadow looks like.

```
.shadow{ text-shadow: 4px 4px 2px rgb(190, 174, 153) }
```

Border

The CSS property to change the border of an element to CIELCh 72, 13.065, 79.867 is called "border". The border property can be set on classes, ids or directly on the HTML element.

This example shows the color as border, it can be applied via the CSS property "border" or "border-color".

```
.border, #border, table{ border:4px solid rgb(190, 174, 153) }
```

If only the border color should be changed use the property `border-color`.

```
.border{ border-color:rgb(190, 174, 153) }
```

If you want to add a box shadow in that color use:

Here you see how a box with a 4 pixel `rgb(190, 174, 153)` colored shadow looks like.

```
.boxshadow{ -moz-box-shadow:4px 4px 4px  
4px rgb(190, 174, 153); -webkit-box-  
shadow:4px 4px 4px 4px rgb(190, 174, 153);  
box-shadow:4px 4px 4px 4px rgb(190, 174,  
153) }
```

Background

The CSS property to change the background color of an element to CIELCh 72, 13.065, 79.867 is called "background". The background property can be set on classes, ids or directly on the HTML element.

```
.background, #background, body{  
background: rgb(190, 174, 153) }
```

If only the background color should be changed can be used:

```
.background{ background-color: rgb(190,  
174, 153) }
```

This example shows the color as background, it is applied via the CSS property "background".

To optimize and compress your CSS code, you can use our [online CSS compressor and optimizer](#) based on csstidy. If you want to create a linear or radial gradient as background or border, check our [CSS Gradient Generator](#).

Hey! You found this booklet interesting? Support Converting Colors with the new Membership Option!

The pro membership hides all ads, plus gives you double the colors in the color bucket, and more awesome pro features!

[Learn more, Memberships starting at \\$2.50/m!](#)

**Follow me
on Twitter!**

@ConvertingColor