

Converting Colors

CIELCh(72, 13.251, 52.547)

Have a look what the booklet for
CIELCh(72, 13.251, 52.547) contains.

CIELCh(72, 13.213, 52.213)	3
<i>Conversions</i>	4
<i>Details</i>	6
<i>Harmonies</i>	11
<i>Previews</i>	20
<i>Color Blindness Simulation</i>	23
<i>CSS Examples</i>	26

Color

CIELCh(72, 13.213, 52.213)

Conversions

Conversions Part 1

Format	Color
Hex	C7AB9E
RGB	199, 171, 158
RGB Percent	78%, 67%, 62%
CMY	0.2202, 0.3299, 0.3809
CMYK	0.00, 0.14, 0.21, 0.22
HSL	19°, 27%, 70%
HSV	19°, 21%, 78%
XYZ	44.2108, 43.6590, 38.3823
YIQ	177.8900, 20.8610, 1.8930

Conversions

Conversions Part 2

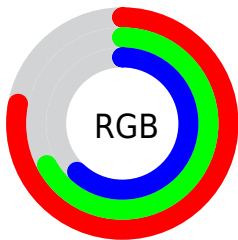
Format	Color
R _Y B	199, 177, 158
Decimal	13085598
CIE Lab	72.00, 8.10, 10.44
CIE LCh	72, 13.213, 52.213
Yxy	43.6590, 0.3502, 0.3458
Android (android.graphics.Color)	4291275678 (0xFFC7AB9E)
YUV	177.8900, -9.8058, 18.5135
Hunter-Lab	66.0750, 3.8033, 11.8116

Details

The CIELCh color **72, 13.213, 52.213** is a light color, and the websafe version is hex **CC9999**. A complement of this color would be **74, 11.790, 235.667**, and the grayscale version is **73, 0.009, 296.813**.

A 20% lighter version of the original color is **92, 12.745, 51.573**, and **52, 13.232, 51.767** is the 20% darker color. If you saturate the color by 10%, you get **68, 20.377, 51.636**, and if you desaturate by 10%, it is **76, 6.556, 52.855**.

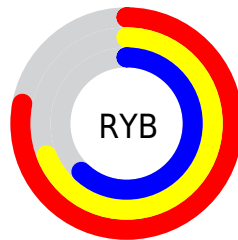
Distribution



Red (78%)

Green (67%)

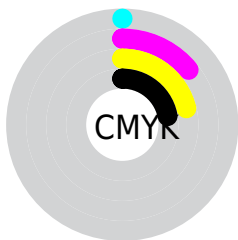
Blue (62%)



Red (78%)

Yellow (69%)

Blue (62%)

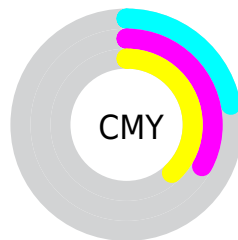


Cyan (0%)

Magenta (14%)

Yellow (21%)

Black (22%)



Cyan (22%)

Magenta (33%)

Yellow (38%)

Brightness & Saturation Gradients

These gradients show how the CIELCh color 72, 13.213, 52.213 changes by changing the brightness by 10 percent. The first figure shows a shift by +10% for each color and the second figure -10%.

Similar to the brightness gradients but the following saturation gradients show a change of the CIELCh color 72, 13.213, 52.213 by changing the saturation by 10% instead.

■ 72, 13.213, 52.213

■ 72, 13.213, 52.213

■ 100, 13.213,
52.213

■ 62, 13.213, 52.213

■ 92, 13.213, 52.213

■ 52, 13.213, 52.213

■ 42, 13.213, 52.213

■ 32, 13.213, 52.213

■ 22, 13.213, 52.213

■ 12, 13.213, 52.213

■ 2, 13.213, 52.213

■ 0, 13.213, 52.213

■ 72, 13.213, 52.213

■ 72, 13.213, 52.213

68, 20.377, 51.636

76, 6.556, 52.855

64, 28.083, 51.128

80, 0.362, 52.282

61, 36.338, 50.720

84, 5.417, 234.486

57, 45.096, 50.415

88, 10.828,
235.204

54, 54.207, 50.177

92, 15.321,
232.135

51, 63.295, 49.878

49, 71.541, 49.202

96, 17.582,
202.833

47, 77.824, 48.104

96, 18.450,
198.285

Harmonies

Complementary

The Complementary color scheme is a pair of colors which are on the opposite of each other on the color wheel.



72, 13.213, 52.213



74, 11.790, 235.667

Rectangle

The Rectangle color scheme consists of four colors that form a rectangle on the color wheel.



72, 13.213, 52.213



72, 13.213, 102.213



72, 13.213, 232.213



72, 13.213, 282.213

Sweetspot

The Sweet Spot groups the original color and five complimentary colors.



72, 13.213, 52.224



97, 4.460, 53.116



70, 21.637, 336.426



51, 2.965, 53.082



0, 0.000, 0.000



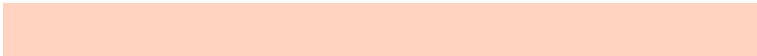
53, 0.007, 296.813

Same Dimension

The Same Dimension uses a secret algorithm to generate beautiful new colors.



72, 13.213, 52.224



88, 19.962, 51.936



77, 18.083, 99.049



40, 3.487, 52.931



38, 66.853, 48.604



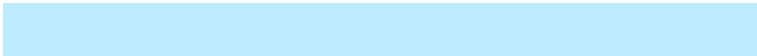
6, 13.474, 39.294

Inverse Universe

The Inverse Universe completely reimagines the original color for something new.



74, 11.790, 235.667



91, 17.292, 236.252



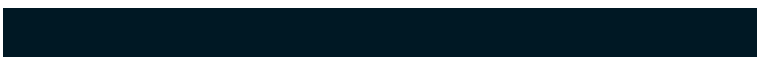
68, 18.547, 284.041



40, 3.324, 234.546



44, 35.892, 258.727



7, 11.514, 247.672

Previews

White Background



This preview shows how the CIELCh color 72, 13.213, 52.213 looks on a white background.

Color Contrast Check

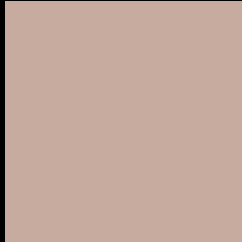
Large Text (above 18pt) WCAG AA × Fail

Any Text WCAG AA × Fail

Large Text (above 18pt) WCAG AAA × Fail

Any Text WCAG AAA × Fail

Black Background



This preview shows how the CIELCh color 72, 13.213, 52.213 looks on a black background.

Color Contrast Check

Large Text (above 18pt) WCAG AA ✓ Pass

Any Text WCAG AA ✓ Pass

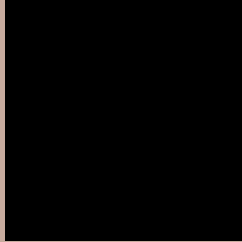
Large Text (above 18pt) WCAG AAA ✓ Pass

Any Text WCAG AAA ✓ Pass

If you want to check with other color combinations, try the [Color Contrast Checker](#).

CIELCh 72, 13.213, 52.213

Background



This preview shows how black text looks on a background with the CIELCh color 72, 13.213, 52.213.



This preview shows how white text looks on a background with the CIELCh color 72, 13.213, 52.213.

Color Blindness Simulation

Color vision deficiency is a very complex topic, and I could not describe the different causes any better than Wikipedia does, so if you want to learn more, you should check out their [article about color blindness](#).

Dichromacy



Original Color

72, 13.213, 52.213

Protanopia

72, 8.696, 88.370

Deuteranopia

72, 13.634, 48.598



Tritanopia
72, 14.684, 352.096

Trichromacy



Original Color
72, 13.213, 52.213

Protanomaly
72, 9.608, 71.665

Deuteranomaly
72, 13.634, 48.598

Tritanomaly
72, 12.508, 10.552

Monochromacy



Original Color
72, 13.213, 52.213

Achromatopsia
73, 0.009, 296.813

Achromatomaly
72, 4.718, 46.941

CSS Examples

Text

The CSS property to change the color of the text to CIELCh 72, 13.213, 52.213 is called "color". The color property can be set on classes, ids or directly on the HTML element.

This example shows how text in the color `rgb(199, 171, 158)` looks like.

```
.text, #text, p{  
    color:rgb(199, 171, 158)  
}
```

If you want to add a text shadow in that color use the text-shadow property, you can generate a text shadow directly with our [CSS Text Shadow Generator](#).

Here you see how black text with a 4 pixel rgb(199, 171, 158) colored shadow looks like.

```
.shadow{ text-shadow: 4px 4px 2px rgb(199, 171, 158) }
```

Border

The CSS property to change the border of an element to CIELCh 72, 13.213, 52.213 is called "border". The border property can be set on classes, ids or directly on the HTML element.

This example shows the color as border, it can be applied via the CSS property "border" or "border-color".

```
.border, #border, table{ border:4px solid rgb(199, 171, 158) }
```

If only the border color should be changed use the property `border-color`.

```
.border{ border-color:rgb(199, 171, 158) }
```

If you want to add a box shadow in that color use:

Here you see how a box with a 4 pixel `rgb(199, 171, 158)` colored shadow looks like.

```
.boxshadow{ -moz-box-shadow:4px 4px 4px  
4px rgb(199, 171, 158); -webkit-box-  
shadow:4px 4px 4px 4px rgb(199, 171, 158);  
box-shadow:4px 4px 4px 4px rgb(199, 171,  
158) }
```

Background

The CSS property to change the background color of an element to CIELCh 72, 13.213, 52.213 is called "background". The background property can be set on classes, ids or directly on the HTML element.

```
.background, #background, body{  
background: rgb(199, 171, 158) }
```

If only the background color should be changed can be used:

```
.background{ background-color: rgb(199,  
171, 158) }
```

This example shows the color as background, it is applied via the CSS property "background".

To optimize and compress your CSS code, you can use our [online CSS compressor and optimizer](#) based on csstidy. If you want to create a linear or radial gradient as background or border, check our [CSS Gradient Generator](#).

Hey! You found this booklet interesting? Support Converting Colors with the new Membership Option!

The pro membership hides all ads, plus gives you double the colors in the color bucket, and more awesome pro features!

[Learn more, Memberships starting at \\$2.50/m!](#)

**Follow me
on Twitter!**

@ConvertingColor