

Converting Colors

CIELCh(72, 13.288, 45.817)

Have a look what the booklet for
CIELCh(72, 13.288, 45.817) contains.

CIELCh(72, 13.092, 44.611)	3
<i>Conversions</i>	4
<i>Details</i>	6
<i>Harmonies</i>	11
<i>Previews</i>	20
<i>Color Blindness Simulation</i>	23
<i>CSS Examples</i>	26

Color

CIELCh(72, 13.092, 44.611)

Conversions

Conversions Part 1

Format	Color
Hex	C8AAA0
RGB	200, 170, 160
RGB Percent	78%, 67%, 63%
CMY	0.2150, 0.3327, 0.3719
CMYK	0.00, 0.15, 0.20, 0.22
HSL	15°, 27%, 71%
HSV	15°, 20%, 78%
XYZ	44.6312, 43.6590, 39.4082
YIQ	177.8300, 21.0900, 3.2500

Conversions

Conversions Part 2

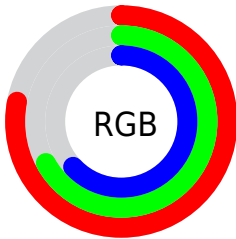
Format	Color
R _Y B	200, 173, 160
Decimal	13150880
CIE Lab	72.00, 9.32, 9.19
CIE LCh	72, 13.092, 44.611
Yxy	43.6590, 0.3495, 0.3419
Android (android.graphics.Color)	4291340960 (0xFFC8AAA0)
YUV	177.8300, -8.7902, 19.4431
Hunter-Lab	66.0750, 4.9390, 10.8909

Details

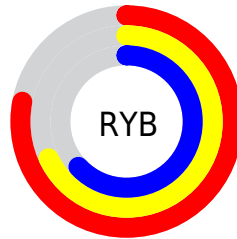
The CIELCh color **72, 13.092, 44.611** is a light color, and the websafe version is hex **CC9999**. A complement of this color would be **75, 11.559, 226.705**, and the grayscale version is **73, 0.009, 296.813**.

A 20% lighter version of the original color is **92, 12.303, 44.731**, and **52, 13.123, 43.756** is the 20% darker color. If you saturate the color by 10%, you get **68, 20.455, 44.392**, and if you desaturate by 10%, it is **76, 6.285, 44.925**.

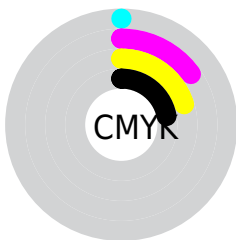
Distribution



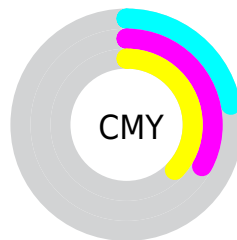
- Red (78%)
- Green (67%)
- Blue (63%)



- Red (78%)
- Yellow (68%)
- Blue (63%)



- Cyan (0%)
- Magenta (15%)
- Yellow (20%)
- Black (22%)



- Cyan (22%)
- Magenta (33%)
- Yellow (37%)


Brightness & Saturation Gradients

These gradients show how the CIELCh color 72, 13.092, 44.611 changes by changing the brightness by 10 percent. The first figure shows a shift by +10% for each color and the second figure -10%.

Similar to the brightness gradients but the following saturation gradients show a change of the CIELCh color 72, 13.092, 44.611 by changing the saturation by 10% instead.

 72, 13.092, 44.611

 72, 13.092, 44.611

 100, 13.092,
44.611

 62, 13.092, 44.611

 92, 13.092, 44.611

 52, 13.092, 44.611

 42, 13.092, 44.611

 32, 13.092, 44.611

 22, 13.092, 44.611

 12, 13.092, 44.611

 2, 13.092, 44.611

 0, 13.092, 44.611

 72, 13.092, 44.611

 72, 13.092, 44.611

68, 20.455, 44.392

76, 6.285, 44.925

64, 28.412, 44.285

81, 0.015, 264.087

60, 36.967, 44.332

85, 5.850, 225.999

56, 46.075, 44.552

90, 11.282,
226.470

53, 55.588, 44.924

94, 15.500,
217.604

50, 65.146, 45.337

47, 73.933, 45.470

96, 18.048,
198.311

45, 80.984, 45.093

45, 80.994, 45.094

Harmonies

Complementary

The Complementary color scheme is a pair of colors which are on the opposite of each other on the color wheel.



72, 13.092, 44.611



75, 11.559, 226.705

Rectangle

The Rectangle color scheme consists of four colors that form a rectangle on the color wheel.



72, 13.092, 44.611



72, 13.092, 94.611



72, 13.092, 224.611



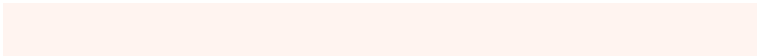
72, 13.092, 274.611

Sweetspot

The Sweet Spot groups the original color and five complimentary colors.



72, 13.091, 44.622



97, 4.525, 45.026



70, 22.093, 333.651



51, 3.010, 45.012



0, 0.000, 0.000



53, 0.007, 296.813

Same Dimension

The Same Dimension uses a secret algorithm to generate beautiful new colors.



72, 13.091, 44.622



87, 19.474, 44.509



77, 16.490, 94.836



40, 3.542, 44.943



37, 69.227, 45.528



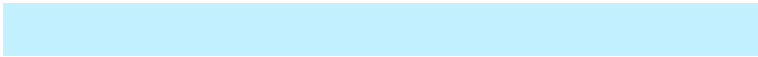
5, 13.837, 34.483

Inverse Universe

The Inverse Universe completely reimagines the original color for something new.



75, 11.559, 226.705



92, 16.680, 227.074



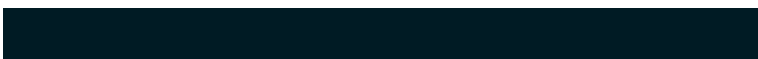
70, 16.712, 279.925



41, 3.353, 226.010



48, 32.684, 245.785



8, 11.142, 235.565

Previews

White Background



This preview shows how the CIELCh color 72, 13.092, 44.611 looks on a white background.

Color Contrast Check

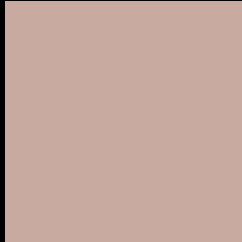
Large Text (above 18pt) WCAG AA × Fail

Any Text WCAG AA × Fail

Large Text (above 18pt) WCAG AAA × Fail

Any Text WCAG AAA × Fail

Black Background



This preview shows how the CIELCh color 72, 13.092, 44.611 looks on a black background.

Color Contrast Check

Large Text (above 18pt) WCAG AA ✓ Pass

Any Text WCAG AA ✓ Pass

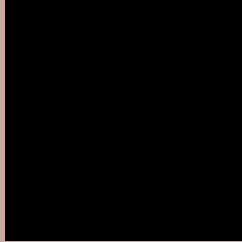
Large Text (above 18pt) WCAG AAA ✓ Pass

Any Text WCAG AAA ✓ Pass

If you want to check with other color combinations, try the [Color Contrast Checker](#).

CIELCh 72, 13.092, 44.611

Background



This preview shows how black text looks on a background with the CIELCh color 72, 13.092, 44.611.



This preview shows how white text looks on a background with the CIELCh color 72, 13.092, 44.611.

Color Blindness Simulation

Color vision deficiency is a very complex topic, and I could not describe the different causes any better than Wikipedia does, so if you want to learn more, you should check out their [article about color blindness](#).

Dichromacy



Original Color

72, 13.092, 44.611

Protanopia

72, 7.539, 88.385

Deuteranopia

72, 13.092, 44.611



Tritanopia
72, 15.377, 353.572

Trichromacy



Original Color
72, 13.092, 44.611

Protanomaly
72, 8.756, 67.530

Deuteranomaly
72, 13.092, 44.611

Tritanomaly
72, 13.370, 8.934

Monochromacy



Original Color
72, 13.092, 44.611

Achromatopsia
73, 0.009, 296.813

Achromatomaly
72, 4.488, 40.838

CSS Examples

Text

The CSS property to change the color of the text to CIELCh 72, 13.092, 44.611 is called "color". The color property can be set on classes, ids or directly on the HTML element.

This example shows how text in the color `rgb(200, 170, 160)` looks like.

```
.text, #text, p{  
    color:rgb(200, 170, 160)  
}
```

If you want to add a text shadow in that color use the text-shadow property, you can generate a text shadow directly with our [CSS Text Shadow Generator](#).

Here you see how black text with a 4 pixel rgb(200, 170, 160) colored shadow looks like.

```
.shadow{ text-shadow: 4px 4px 2px rgb(200, 170, 160) }
```

Border

The CSS property to change the border of an element to CIELCh 72, 13.092, 44.611 is called "border". The border property can be set on classes, ids or directly on the HTML element.

This example shows the color as border, it can be applied via the CSS property "border" or "border-color".

```
.border, #border, table{ border:4px solid rgb(200, 170, 160) }
```

If only the border color should be changed use the property `border-color`.

```
.border{ border-color:rgb(200, 170, 160) }
```

If you want to add a box shadow in that color use:

Here you see how a box with a 4 pixel `rgb(200, 170, 160)` colored shadow looks like.

```
.boxshadow{ -moz-box-shadow:4px 4px 4px  
4px rgb(200, 170, 160); -webkit-box-  
shadow:4px 4px 4px 4px rgb(200, 170, 160);  
box-shadow:4px 4px 4px 4px rgb(200, 170,  
160) }
```

Background

The CSS property to change the background color of an element to CIELCh 72, 13.092, 44.611 is called "background". The background property can be set on classes, ids or directly on the HTML element.

```
.background, #background, body{  
background: rgb(200, 170, 160) }
```

If only the background color should be changed can be used:

```
.background{ background-color: rgb(200,  
170, 160) }
```

This example shows the color as background, it is applied via the CSS property "background".

To optimize and compress your CSS code, you can use our [online CSS compressor and optimizer](#) based on csstidy. If you want to create a linear or radial gradient as background or border, check our [CSS Gradient Generator](#).

Hey! You found this booklet interesting? Support Converting Colors with the new Membership Option!

The pro membership hides all ads, plus gives you double the colors in the color bucket, and more awesome pro features!

[Learn more, Memberships starting at \\$2.50/m!](#)

**Follow me
on Twitter!**

@ConvertingColor