

Converting Colors

CIELCh(72, 14.344, 3.714)

Have a look what the booklet for
CIELCh(72, 14.344, 3.714) contains.

CIELCh(72, 13.953, 4.929)	3
<i>Conversions</i>	4
<i>Details</i>	6
<i>Harmonies</i>	11
<i>Previews</i>	20
<i>Color Blindness Simulation</i>	23
<i>CSS Examples</i>	26

Color

CIELCh(72, 13.953, 4.929)

Conversions

Conversions Part 1

Format	Color
Hex	CBA8AF
RGB	203, 168, 175
RGB Percent	80%, 66%, 69%
CMY	0.2049, 0.3421, 0.3147
CMYK	0.00, 0.17, 0.14, 0.20
HSL	348°, 25%, 73%
HSV	348°, 17%, 80%
XYZ	46.2283, 43.6590, 46.4193
YIQ	179.2630, 18.6130, 9.5970

Conversions

Conversions Part 2

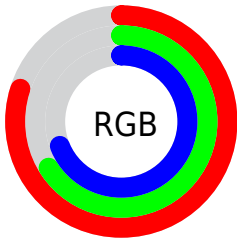
Format	Color
R _Y B	203, 168, 175
Decimal	13346991
CIE Lab	72.00, 13.90, 1.20
CIE LCh	72, 13.953, 4.929
Yxy	43.6590, 0.3391, 0.3203
Android (android.graphics.Color)	4291537071 (0xFFCBA8AF)
YUV	179.2630, -2.1017, 20.8173
Hunter-Lab	66.0750, 9.2534, 4.5998

Details

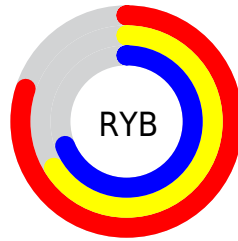
The CIELCh color **72, 13.953, 4.929** is a light color, and the websafe version is hex **CC9999**. A complement of this color would be **79, 13.023, 181.737**, and the grayscale version is **73, 0.009, 296.813**.

A 20% lighter version of the original color is **92, 12.159, 3.011**, and **52, 14.130, 4.548** is the 20% darker color. If you saturate the color by 10%, you get **67, 22.564, 6.198**, and if you desaturate by 10%, it is **78, 5.717, 3.832**.

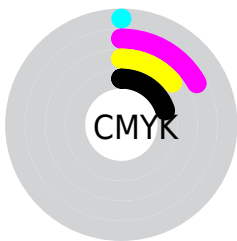
Distribution



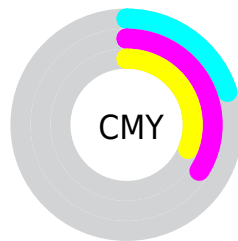
- Red (80%)
- Green (66%)
- Blue (69%)



- Red (80%)
- Yellow (66%)
- Blue (69%)



- Cyan (0%)
- Magenta (17%)
- Yellow (14%)
- Black (20%)



- Cyan (20%)
- Magenta (34%)
- Yellow (31%)

Brightness & Saturation Gradients

These gradients show how the CIELCh color 72, 13.953, 4.929 changes by changing the brightness by 10 percent. The first figure shows a shift by +10% for each color and the second figure -10%.

Similar to the brightness gradients but the following saturation gradients show a change of the CIELCh color 72, 13.953, 4.929 by changing the saturation by 10% instead.

 72, 13.953, 4.929

 72, 13.953, 4.929

 100, 13.953, 4.929

 62, 13.953, 4.929

 92, 13.953, 4.929

 52, 13.953, 4.929

 42, 13.953, 4.929

 32, 13.953, 4.929

 22, 13.953, 4.929

 12, 13.953, 4.929

 2, 13.953, 4.929

 0, 13.953, 4.929

 72, 13.953, 4.929

 72, 13.953, 4.929

67, 22.564, 6.198

78, 5.717, 3.832

62, 31.455, 7.718

83, 2.097, 183.271

57, 40.447, 9.592

89, 9.487, 182.301

52, 49.267, 11.941

95, 16.471,
181.593

49, 57.575, 14.915

97, 17.260,
198.361

46, 65.039, 18.660

44, 71.473, 23.243

43, 76.958, 28.465

42, 78.447, 29.833

Harmonies

Complementary

The Complementary color scheme is a pair of colors which are on the opposite of each other on the color wheel.



72, 13.953, 4.929



79, 13.023, 181.737

Rectangle

The Rectangle color scheme consists of four colors that form a rectangle on the color wheel.



72, 13.953, 4.929



72, 13.953, 54.929



72, 13.953, 184.929



72, 13.953, 234.929

Sweetspot

The Sweet Spot groups the original color and five complimentary colors.



72, 13.951, 4.935



97, 4.718, 3.585



72, 21.633, 319.565



51, 3.225, 3.668



0, 0.000, 0.000



53, 0.007, 296.813

Same Dimension

The Same Dimension uses a secret algorithm to generate beautiful new colors.



72, 13.951, 4.935



86, 20.654, 5.418



74, 11.128, 50.430



40, 4.517, 4.064



34, 67.037, 28.971



4, 18.214, 9.658

Inverse Universe

The Inverse Universe completely reimagines the original color for something new.



72, 13.951, 4.935



86, 20.654, 5.418



76, 10.096, 233.035



40, 4.517, 4.064



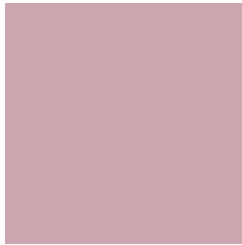
34, 67.037, 28.971



4, 18.214, 9.658

Previews

White Background



This preview shows how the CIELCh color 72, 13.953, 4.929 looks on a white background.

Color Contrast Check

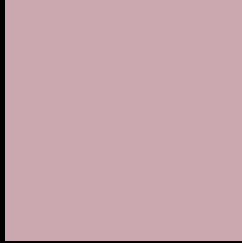
Large Text (above 18pt) WCAG AA × Fail

Any Text WCAG AA × Fail

Large Text (above 18pt) WCAG AAA × Fail

Any Text WCAG AAA × Fail

Black Background



This preview shows how the CIELCh color 72, 13.953, 4.929 looks on a black background.

Color Contrast Check

Large Text (above 18pt) WCAG AA ✓ Pass

Any Text WCAG AA ✓ Pass

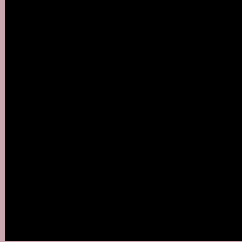
Large Text (above 18pt) WCAG AAA ✓ Pass

Any Text WCAG AAA ✓ Pass

If you want to check with other color combinations, try the [Color Contrast Checker](#).

CIELCh 72, 13.953, 4.929

Background



This preview shows how black text looks on a background with the CIELCh color 72, 13.953, 4.929.



This preview shows how white text looks on a background with the CIELCh color 72, 13.953, 4.929.

Color Blindness Simulation

Color vision deficiency is a very complex topic, and I could not describe the different causes any better than Wikipedia does, so if you want to learn more, you should check out their [article about color blindness](#).

Dichromacy



Original Color

72, 13.953, 4.929

Protanopia

72, 1.997, 324.414

Deuteranopia

72, 9.330, 10.167



Tritanopia
72, 15.377, 353.572

Trichromacy



Original Color
72, 13.953, 4.929

Protanomaly
72, 6.087, 358.983

Deuteranomaly
72, 10.955, 8.963

Tritanomaly
72, 14.960, 357.324

Monochromacy



Original Color
72, 13.953, 4.929

Achromatopsia
73, 0.009, 296.813

Achromatomaly
73, 5.041, 7.341

CSS Examples

Text

The CSS property to change the color of the text to CIELCh 72, 13.953, 4.929 is called "color". The color property can be set on classes, ids or directly on the HTML element.

This example shows how text in the color `rgb(203, 168, 175)` looks like.

```
.text, #text, p{  
    color:rgb(203, 168, 175)  
}
```

If you want to add a text shadow in that color use the text-shadow property, you can generate a text shadow directly with our [CSS Text Shadow Generator](#).

Here you see how black text with a 4 pixel rgb(203, 168, 175) colored shadow looks like.

```
.shadow{ text-shadow: 4px 4px 2px rgb(203, 168, 175) }
```

Border

The CSS property to change the border of an element to CIELCh 72, 13.953, 4.929 is called "border". The border property can be set on classes, ids or directly on the HTML element.

This example shows the color as border, it can be applied via the CSS property "border" or "border-color".

```
.border, #border, table{ border:4px solid rgb(203, 168, 175) }
```

If only the border color should be changed use the property `border-color`.

```
.border{ border-color:rgb(203, 168, 175) }
```

If you want to add a box shadow in that color use:

Here you see how a box with a 4 pixel `rgb(203, 168, 175)` colored shadow looks like.

```
.boxshadow{ -moz-box-shadow:4px 4px 4px  
4px rgb(203, 168, 175); -webkit-box-  
shadow:4px 4px 4px 4px rgb(203, 168, 175);  
box-shadow:4px 4px 4px 4px rgb(203, 168,  
175) }
```

Background

The CSS property to change the background color of an element to CIELCh 72, 13.953, 4.929 is called "background". The background property can be set on classes, ids or directly on the HTML element.

```
.background, #background, body{  
background: rgb(203, 168, 175) }
```

If only the background color should be changed can be used:

```
.background{ background-color: rgb(203,  
168, 175) }
```

This example shows the color as background, it is applied via the CSS property "background".

To optimize and compress your CSS code, you can use our [online CSS compressor and optimizer](#) based on csstidy. If you want to create a linear or radial gradient as background or border, check our [CSS Gradient Generator](#).

Hey! You found this booklet interesting? Support Converting Colors with the new Membership Option!

The pro membership hides all ads, plus gives you double the colors in the color bucket, and more awesome pro features!

[Learn more, Memberships starting at \\$2.50/m!](#)

**Follow me
on Twitter!**

@ConvertingColor