

Converting Colors

CIELCh(72, 15.736, 68.999)

Have a look what the booklet for
CIELCh(72, 15.736, 68.999) contains.

CIELCh(72, 15.682, 69.059)	3
<i>Conversions</i>	4
<i>Details</i>	6
<i>Harmonies</i>	11
<i>Previews</i>	20
<i>Color Blindness Simulation</i>	23
<i>CSS Examples</i>	26

Color

CIELCh(72, 15.682, 69.059)

Conversions

Conversions Part 1

Format	Color
Hex	C5AC96
RGB	197, 172, 150
RGB Percent	77%, 67%, 59%
CMY	0.2268, 0.3249, 0.4112
CMYK	0.00, 0.13, 0.24, 0.23
HSL	28°, 29%, 68%
HSV	28°, 24%, 77%
XYZ	43.3634, 43.6590, 35.0569
YIQ	176.9670, 21.9620, -1.5420

Conversions

Conversions Part 2

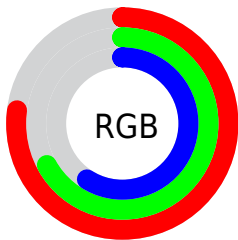
Format	Color
RYB	197, 191, 150
Decimal	12954774
CIELab	72.00, 5.60, 14.65
CIELCh	72, 15.682, 69.059
Yxy	43.6590, 0.3552, 0.3576
Android (android.graphics.Color)	4291144854 (0xFFC5AC96)
YUV	176.9670, -13.2947, 17.5689
Hunter-Lab	66.0750, 1.5141, 14.7955

Details

The CIELCh color $72, 15.682, 69.059$ is a light color, and the websafe version is hex `CC9999`. A complement of this color would be $70, 14.524, 255.327$, and the grayscale version is $72, 0.009, 296.813$.

A 20% lighter version of the original color is $92, 15.686, 68.624$, and $52, 15.888, 69.316$ is the 20% darker color. If you saturate the color by 10%, you get $69, 22.858, 67.892$, and if you desaturate by 10%, it is $75, 8.869, 70.232$.

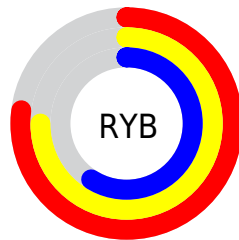
Distribution



Red (77%)

Green (67%)

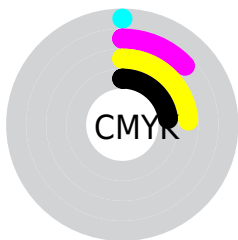
Blue (59%)



Red (77%)

Yellow (75%)

Blue (59%)

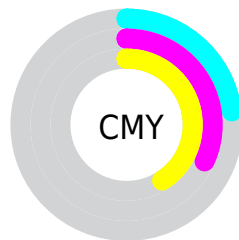


Cyan (0%)

Magenta (13%)

Yellow (24%)

Black (23%)



Cyan (23%)

Magenta (32%)

Yellow (41%)


Brightness & Saturation Gradients

These gradients show how the CIELCh color 72, 15.682, 69.059 changes by changing the brightness by 10 percent. The first figure shows a shift by +10% for each color and the second figure -10%.

Similar to the brightness gradients but the following saturation gradients show a change of the CIELCh color 72, 15.682, 69.059 by changing the saturation by 10% instead.

 72, 15.682, 69.059

 72, 15.682, 69.059

 100, 15.682,
69.059

 62, 15.682, 69.059

 92, 15.682, 69.059

 52, 15.682, 69.059

 42, 15.682, 69.059

 32, 15.682, 69.059

 22, 15.682, 69.059

 12, 15.682, 69.059

 2, 15.682, 69.059

 0, 15.682, 69.059

 72, 15.682, 69.059

 72, 15.682, 69.059

69, 22.858, 67.892

75, 8.869, 70.232

66, 30.404, 66.716

78, 2.397, 71.285

63, 38.288, 65.539

82, 3.767, 252.704

60, 46.406, 64.336

85, 9.653, 253.769

58, 54.507, 63.038

88, 15.292,
254.848

55, 62.072, 61.483

91, 15.875,
239.622

53, 68.199, 59.355

51, 71.303, 57.862

94, 16.434,
215.810

96, 18.966,
198.253

Harmonies

Complementary

The Complementary color scheme is a pair of colors which are on the opposite of each other on the color wheel.



72, 15.682, 69.059



70, 14.524, 255.327

Rectangle

The Rectangle color scheme consists of four colors that form a rectangle on the color wheel.



72, 15.682, 69.059



72, 15.682, 119.059



72, 15.682, 249.059



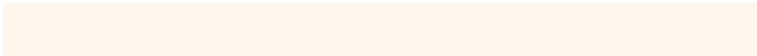
72, 15.682, 299.059

Sweetspot

The Sweet Spot groups the original color and five complimentary colors.



72, 15.682, 69.068



97, 5.430, 70.980



67, 22.494, 343.940



52, 3.534, 70.915



0, 0.000, 0.000



53, 0.007, 296.813

Same Dimension

The Same Dimension uses a secret algorithm to generate beautiful new colors.



72, 15.682, 69.068



89, 23.856, 68.410



78, 24.076, 106.457



40, 3.617, 70.734



43, 61.764, 58.428



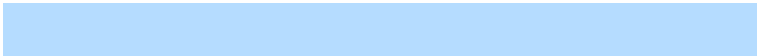
7, 12.961, 53.723

Inverse Universe

The Inverse Universe completely reimagines the original color for something new.



70, 14.524, 255.327



86, 21.647, 256.355



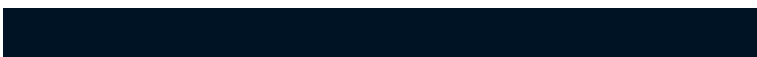
64, 25.360, 291.646



40, 3.523, 253.133



37, 48.066, 280.283



5, 13.509, 267.382

Previews

White Background



This preview shows how the CIELCh color 72, 15.682, 69.059 looks on a white background.

Color Contrast Check

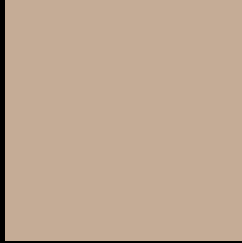
Large Text (above 18pt) WCAG AA × Fail

Any Text WCAG AA × Fail

Large Text (above 18pt) WCAG AAA × Fail

Any Text WCAG AAA × Fail

Black Background



This preview shows how the CIELCh color 72, 15.682, 69.059 looks on a black background.

Color Contrast Check

Large Text (above 18pt) WCAG AA ✓ Pass

Any Text WCAG AA ✓ Pass

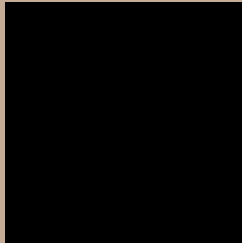
Large Text (above 18pt) WCAG AAA ✓ Pass

Any Text WCAG AAA ✓ Pass

If you want to check with other color combinations, try the [Color Contrast Checker](#).

CIELCh 72, 15.682, 69.059

Background



This preview shows how black text looks on a background with the CIELCh color 72, 15.682, 69.059.



This preview shows how white text looks on a background with the CIELCh color 72, 15.682, 69.059.

Color Blindness Simulation

Color vision deficiency is a very complex topic, and I could not describe the different causes any better than Wikipedia does, so if you want to learn more, you should check out their [article about color blindness](#).

Dichromacy



Original Color

72, 15.682, 69.059

Protanopia

72, 13.478, 93.514

Deuteranopia

72, 16.951, 57.385



Tritanopia
72, 14.349, 351.314

Trichromacy



Original Color
72, 15.682, 69.059

Protanomaly
72, 14.165, 85.647

Deuteranomaly
72, 16.339, 61.378

Tritanomaly
72, 11.623, 20.378

Monochromacy



Original Color
72, 15.682, 69.059

Achromatopsia
72, 0.009, 296.813

Achromatomaly
72, 5.536, 71.027

CSS Examples

Text

The CSS property to change the color of the text to CIELCh 72, 15.682, 69.059 is called "color". The color property can be set on classes, ids or directly on the HTML element.

This example shows how text in the color `rgb(197, 172, 150)` looks like.

```
.text, #text, p{  
    color:rgb(197, 172, 150)  
}
```

If you want to add a text shadow in that color use the text-shadow property, you can generate a text shadow directly with our [CSS Text Shadow Generator](#).

Here you see how black text with a 4 pixel rgb(197, 172, 150) colored shadow looks like.

```
.shadow{ text-shadow: 4px 4px 2px rgb(197, 172, 150) }
```

Border

The CSS property to change the border of an element to CIELCh 72, 15.682, 69.059 is called "border". The border property can be set on classes, ids or directly on the HTML element.

This example shows the color as border, it can be applied via the CSS property "border" or "border-color".

```
.border, #border, table{ border:4px solid rgb(197, 172, 150) }
```

If only the border color should be changed use the property border-color.

```
.border{ border-color:rgb(197, 172, 150) }
```

If you want to add a box shadow in that color use:

Here you see how a box with a 4 pixel rgb(197, 172, 150) colored shadow looks like.

```
.boxshadow{ -moz-box-shadow:4px 4px 4px  
4px rgb(197, 172, 150); -webkit-box-  
shadow:4px 4px 4px 4px rgb(197, 172, 150);  
box-shadow:4px 4px 4px 4px rgb(197, 172,  
150) }
```

Background

The CSS property to change the background color of an element to CIELCh 72, 15.682, 69.059 is called "background". The background property can be set on classes, ids or directly on the HTML element.

```
.background, #background, body{  
background: rgb(197, 172, 150) }
```

If only the background color should be changed can be used:

```
.background{ background-color: rgb(197,  
172, 150) }
```

This example shows the color as background, it is applied via the CSS property "background".

To optimize and compress your CSS code, you can use our [online CSS compressor and optimizer](#) based on csstidy. If you want to create a linear or radial gradient as background or border, check our [CSS Gradient Generator](#).

Hey! You found this booklet interesting? Support Converting Colors with the new Membership Option!

The pro membership hides all ads, plus gives you double the colors in the color bucket, and more awesome pro features!

[Learn more, Memberships starting at \\$2.50/m!](#)

**Follow me
on Twitter!**

@ConvertingColor