

Converting Colors

CIELCh(72, 16.120, 43.433)

Have a look what the booklet for
CIELCh(72, 16.120, 43.433) contains.

CIELCh(72, 15.858, 44.521)	3
<i>Conversions</i>	4
<i>Details</i>	6
<i>Harmonies</i>	11
<i>Previews</i>	20
<i>Color Blindness Simulation</i>	23
<i>CSS Examples</i>	26

Color

CIELCh(72, 15.858, 44.521)

Conversions

Conversions Part 1

Format	Color
Hex	CDA99D
RGB	205, 169, 157
RGB Percent	80%, 66%, 62%
CMY	0.1970, 0.3382, 0.3852
CMYK	0.00, 0.18, 0.23, 0.20
HSL	15°, 32%, 71%
HSV	15°, 23%, 80%
XYZ	45.3192, 43.6590, 37.8331
YIQ	178.3960, 25.3080, 3.9000

Conversions

Conversions Part 2

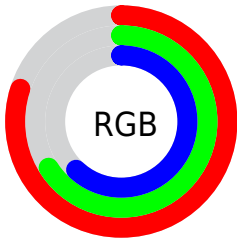
Format	Color
R_{YB}	205, 173, 157
Decimal	13478301
CIE Lab	72.00, 11.31, 11.12
CIE LCh	72, 15.858, 44.521
Yxy	43.6590, 0.3574, 0.3443
Android (android.graphics.Color)	4291668381 (0xFFCDA99D)
YUV	178.3960, -10.5482, 23.3317
Hunter-Lab	66.0750, 6.7974, 12.3043

Details

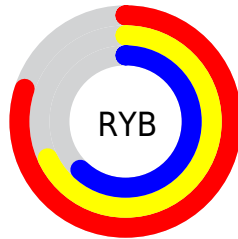
The CIELCh color $72, 15.858, 44.521$ is a light color, and the websafe version is hex `CC9999`. A complement of this color would be $76, 13.666, 226.996$, and the grayscale version is $73, 0.009, 296.813$.

A 20% lighter version of the original color is $91, 13.157, 48.014$, and $52, 15.735, 44.406$ is the 20% darker color. If you saturate the color by 10%, you get $68, 23.566, 44.339$, and if you desaturate by 10%, it is $76, 8.732, 44.817$.

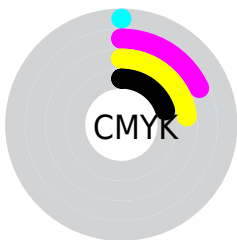
Distribution



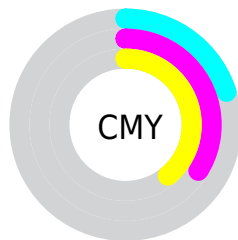
- Red (80%)
- Green (66%)
- Blue (62%)



- Red (80%)
- Yellow (68%)
- Blue (62%)



- Cyan (0%)
- Magenta (18%)
- Yellow (23%)
- Black (20%)



- Cyan (20%)
- Magenta (34%)
- Yellow (39%)


Brightness & Saturation Gradients

These gradients show how the CIELCh color 72, 15.858, 44.521 changes by changing the brightness by 10 percent. The first figure shows a shift by +10% for each color and the second figure -10%.

Similar to the brightness gradients but the following saturation gradients show a change of the CIELCh color 72, 15.858, 44.521 by changing the saturation by 10% instead.

 72, 15.858, 44.521

 72, 15.858, 44.521

 100, 15.858,
44.521

 62, 15.858, 44.521

 92, 15.858, 44.521

 52, 15.858, 44.521

 42, 15.858, 44.521

 32, 15.858, 44.521

 22, 15.858, 44.521

 12, 15.858, 44.521

 2, 15.858, 44.521

 0, 15.858, 44.521

 72, 15.858, 44.521

 72, 15.858, 44.521

68, 23.566, 44.339

76, 8.732, 44.817

64, 31.884, 44.283

81, 2.145, 45.028

60, 40.806, 44.390

85, 3.957, 225.875

56, 50.254, 44.669

90, 9.625, 226.300

53, 60.019, 45.077

94, 14.209,
218.767

50, 69.604, 45.444

97, 16.639,
198.401

47, 77.929, 45.331

46, 82.420, 45.051

Harmonies

Complementary

The Complementary color scheme is a pair of colors which are on the opposite of each other on the color wheel.



72, 15.858, 44.521



76, 13.666, 226.996

Rectangle

The Rectangle color scheme consists of four colors that form a rectangle on the color wheel.



72, 15.858, 44.521



72, 15.858, 94.521



72, 15.858, 224.521



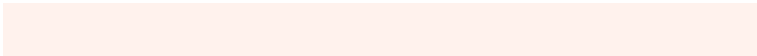
72, 15.858, 274.521

Sweetspot

The Sweet Spot groups the original color and five complimentary colors.



72, 15.857, 44.530



96, 5.301, 45.004



70, 26.408, 333.898



51, 3.453, 44.989



0, 0.000, 0.000



53, 0.007, 296.813

Same Dimension

The Same Dimension uses a secret algorithm to generate beautiful new colors.



72, 15.857, 44.530



85, 23.098, 44.421



78, 19.732, 94.406



41, 3.617, 44.942



37, 70.055, 45.492



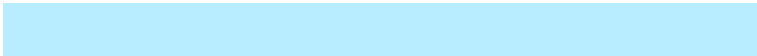
6, 15.623, 33.793

Inverse Universe

The Inverse Universe completely reimagines the original color for something new.



76, 13.666, 226.996



91, 19.211, 227.462



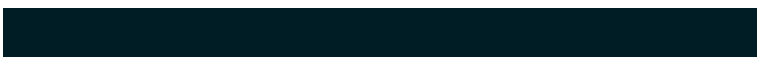
69, 20.046, 280.481



42, 3.424, 226.012



49, 33.070, 245.848



9, 11.800, 235.097

Previews

White Background



This preview shows how the CIELCh color 72, 15.858, 44.521 looks on a white background.

Color Contrast Check

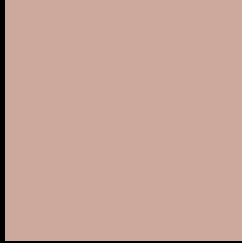
Large Text (above 18pt) WCAG AA × Fail

Any Text WCAG AA × Fail

Large Text (above 18pt) WCAG AAA × Fail

Any Text WCAG AAA × Fail

Black Background



This preview shows how the CIELCh color 72, 15.858, 44.521 looks on a black background.

Color Contrast Check

Large Text (above 18pt) WCAG AA ✓ Pass

Any Text WCAG AA ✓ Pass

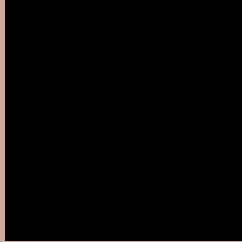
Large Text (above 18pt) WCAG AAA ✓ Pass

Any Text WCAG AAA ✓ Pass

If you want to check with other color combinations, try the [Color Contrast Checker](#).

CIELCh 72, 15.858, 44.521

Background



This preview shows how black text looks on a background with the CIELCh color 72, 15.858, 44.521.



This preview shows how white text looks on a background with the CIELCh color 72, 15.858, 44.521.

Color Blindness Simulation

Color vision deficiency is a very complex topic, and I could not describe the different causes any better than Wikipedia does, so if you want to learn more, you should check out their [article about color blindness](#).

Dichromacy



Original Color

72, 15.858, 44.521

Protanopia

72, 8.696, 88.370

Deuteranopia

72, 14.588, 51.421



Tritanopia
72, 16.944, 358.469

Trichromacy



Original Color
72, 15.858, 44.521

Protanomaly
72, 10.681, 64.919

Deuteranomaly
72, 14.940, 50.628

Tritanomaly
72, 15.238, 14.663

Monochromacy



Original Color
72, 15.858, 44.521

Achromatopsia
73, 0.009, 296.813

Achromatomaly
72, 5.666, 48.203

CSS Examples

Text

The CSS property to change the color of the text to CIELCh 72, 15.858, 44.521 is called "color". The color property can be set on classes, ids or directly on the HTML element.

This example shows how text in the color `rgb(205, 169, 157)` looks like.

```
.text, #text, p{  
    color:rgb(205, 169, 157)  
}
```

If you want to add a text shadow in that color use the text-shadow property, you can generate a text shadow directly with our [CSS Text Shadow Generator](#).

Here you see how black text with a 4 pixel rgb(205, 169, 157) colored shadow looks like.

```
.shadow{ text-shadow: 4px 4px 2px rgb(205, 169, 157) }
```

Border

The CSS property to change the border of an element to CIELCh 72, 15.858, 44.521 is called "border". The border property can be set on classes, ids or directly on the HTML element.

This example shows the color as border, it can be applied via the CSS property "border" or "border-color".

```
.border, #border, table{ border:4px solid rgb(205, 169, 157) }
```

If only the border color should be changed use the property `border-color`.

```
.border{ border-color:rgb(205, 169, 157) }
```

If you want to add a box shadow in that color use:

Here you see how a box with a 4 pixel `rgb(205, 169, 157)` colored shadow looks like.

```
.boxshadow{ -moz-box-shadow:4px 4px 4px  
4px rgb(205, 169, 157); -webkit-box-  
shadow:4px 4px 4px 4px rgb(205, 169, 157);  
box-shadow:4px 4px 4px 4px rgb(205, 169,  
157) }
```

Background

The CSS property to change the background color of an element to CIELCh 72, 15.858, 44.521 is called "background". The background property can be set on classes, ids or directly on the HTML element.

```
.background, #background, body{  
background: rgb(205, 169, 157) }
```

If only the background color should be changed can be used:

```
.background{ background-color: rgb(205,  
169, 157) }
```

This example shows the color as background, it is applied via the CSS property "background".

To optimize and compress your CSS code, you can use our [online CSS compressor and optimizer](#) based on csstidy. If you want to create a linear or radial gradient as background or border, check our [CSS Gradient Generator](#).

Hey! You found this booklet interesting? Support Converting Colors with the new Membership Option!

The pro membership hides all ads, plus gives you double the colors in the color bucket, and more awesome pro features!

[Learn more, Memberships starting at \\$2.50/m!](#)

**Follow me
on Twitter!**

@ConvertingColor