

Converting Colors

CIELCh(72, 16.847, 38.915)

Have a look what the booklet for
CIELCh(72, 16.847, 38.915) contains.

| | |
|--|----|
| CIELCh(72, 16.551, 39.595) | 3 |
| <i>Conversions</i> | 4 |
| <i>Details</i> | 6 |
| <i>Harmonies</i> | 11 |
| <i>Previews</i> | 20 |
| <i>Color Blindness Simulation</i> | 23 |
| <i>CSS Examples</i> | 26 |

Color

CIELCh(72, 16.551, 39.595)

Conversions

Conversions Part 1

| Format | Color |
|---------------|---------------------------|
| Hex | CFA89E |
| RGB | 207, 168, 158 |
| RGB Percent | 81%, 66%, 62% |
| CMY | 0.1888, 0.3417, 0.3809 |
| CMYK | 0.00, 0.19, 0.24, 0.19 |
| HSL | 12°, 34%, 72% |
| HSV | 12°, 24%, 81% |
| XYZ | 45.8247, 43.6590, 38.2953 |
| YIQ | 178.5210, 26.4540, 5.1580 |

Conversions

Conversions Part 2

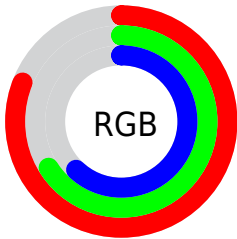
| Format | Color |
|-------------------------------------|--------------------------------|
| R _Y B | 207, 171, 158 |
| Decimal | 13609118 |
| CIE Lab | 72.00, 12.75, 10.55 |
| CIE LCh | 72, 16.551, 39.595 |
| Yxy | 43.6590, 0.3586, 0.3417 |
| Android (android.graphics.Color) | 4291799198 (0xFFCFA89E) |
| YUV | 178.5210, -10.1169, 24.9761 |
| Hunter-Lab | 66.0750, 8.1631, 11.8896 |

Details

The CIELCh color $72, 16.551, 39.595$ is a light color, and the websafe version is hex `CC9999`. A complement of this color would be $77, 14.129, 220.987$, and the grayscale version is $73, 0.009, 296.813$.

A 20% lighter version of the original color is $91, 13.024, 43.365$, and $52, 16.493, 39.207$ is the 20% darker color. If you saturate the color by 10%, you get $68, 24.541, 39.688$, and if you desaturate by 10%, it is $77, 9.174, 39.644$.

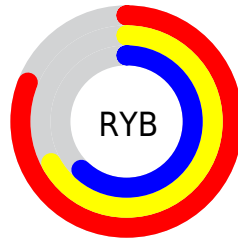
Distribution



Red (81%)

Green (66%)

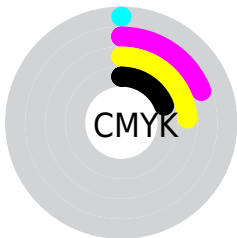
Blue (62%)



Red (81%)

Yellow (67%)

Blue (62%)

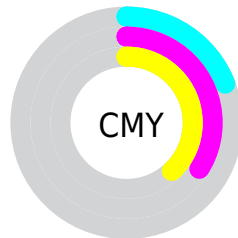


Cyan (0%)

Magenta (19%)

Yellow (24%)

Black (19%)



Cyan (19%)

Magenta (34%)

Yellow (38%)


Brightness & Saturation Gradients

These gradients show how the CIELCh color 72, 16.551, 39.595 changes by changing the brightness by 10 percent. The first figure shows a shift by +10% for each color and the second figure -10%.

Similar to the brightness gradients but the following saturation gradients show a change of the CIELCh color 72, 16.551, 39.595 by changing the saturation by 10% instead.

 72, 16.551, 39.595

 72, 16.551, 39.595

 100, 16.551,
39.595

 62, 16.551, 39.595

 92, 16.551, 39.595

 52, 16.551, 39.595

 42, 16.551, 39.595

 32, 16.551, 39.595

 22, 16.551, 39.595

 12, 16.551, 39.595

 2, 16.551, 39.595

 0, 16.551, 39.595

 72, 16.551, 39.595

 72, 16.551, 39.595

68, 24.541, 39.688

77, 9.174, 39.644

63, 33.167, 39.944

81, 2.370, 39.645

59, 42.410, 40.410

86, 3.915, 220.276

55, 52.176, 41.106

91, 9.736, 220.504

52, 62.236, 41.996

96, 14.520,
208.439

49, 72.065, 42.906

97, 15.987,
198.443

47, 80.507, 43.354

46, 84.818, 43.445

Harmonies

Complementary

The Complementary color scheme is a pair of colors which are on the opposite of each other on the color wheel.



72, 16.551, 39.595



77, 14.129, 220.987

Rectangle

The Rectangle color scheme consists of four colors that form a rectangle on the color wheel.



72, 16.551, 39.595



72, 16.551, 89.595



72, 16.551, 219.595



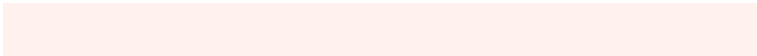
72, 16.551, 269.595

Sweetspot

The Sweet Spot groups the original color and five complimentary colors.



72, 16.550, 39.604



96, 5.414, 39.689



71, 27.864, 332.024



51, 3.526, 39.688



0, 0.000, 0.000



53, 0.007, 296.813

Same Dimension

The Same Dimension uses a secret algorithm to generate beautiful new colors.



72, 16.550, 39.604



85, 23.643, 39.624



78, 19.177, 90.736



42, 3.771, 39.678



37, 72.398, 43.806



6, 17.734, 30.709

Inverse Universe

The Inverse Universe completely reimagines the original color for something new.



77, 14.129, 220.987



92, 19.483, 221.296



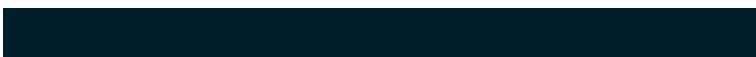
71, 19.251, 277.104



43, 3.558, 220.342



52, 32.231, 236.169



11, 12.196, 227.582

Previews

White Background



This preview shows how the CIELCh color 72, 16.551, 39.595 looks on a white background.

Color Contrast Check

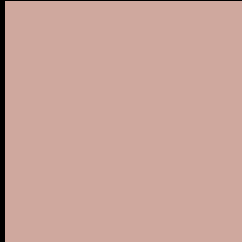
Large Text (above 18pt) WCAG AA × Fail

Any Text WCAG AA × Fail

Large Text (above 18pt) WCAG AAA × Fail

Any Text WCAG AAA × Fail

Black Background



This preview shows how the CIELCh color 72, 16.551, 39.595 looks on a black background.

Color Contrast Check

Large Text (above 18pt) WCAG AA ✓ Pass

Any Text WCAG AA ✓ Pass

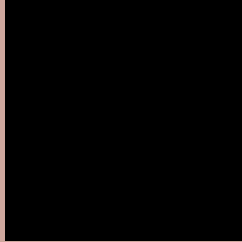
Large Text (above 18pt) WCAG AAA ✓ Pass

Any Text WCAG AAA ✓ Pass

If you want to check with other color combinations, try the [Color Contrast Checker](#).

CIELCh 72, 16.551, 39.595

Background



This preview shows how black text looks on a background with the CIELCh color 72, 16.551, 39.595.



This preview shows how white text looks on a background with the CIELCh color 72, 16.551, 39.595.

Color Blindness Simulation

Color vision deficiency is a very complex topic, and I could not describe the different causes any better than Wikipedia does, so if you want to learn more, you should check out their [article about color blindness](#).

Dichromacy



Original Color

72, 16.551, 39.595

Protanopia

72, 8.050, 89.685

Deuteranopia

72, 14.283, 49.663



Tritanopia
72, 18.214, 358.426

Trichromacy



Original Color
72, 16.551, 39.595

Protanomaly
72, 10.288, 62.903

Deuteranomaly
72, 15.112, 45.741

Tritanomaly
72, 16.513, 11.503

Monochromacy



Original Color
72, 16.551, 39.595

Achromatopsia
73, 0.009, 296.813

Achromatomaly
72, 5.594, 36.621

CSS Examples

Text

The CSS property to change the color of the text to CIELCh 72, 16.551, 39.595 is called "color". The color property can be set on classes, ids or directly on the HTML element.

This example shows how text in the color `rgb(207, 168, 158)` looks like.

```
.text, #text, p{  
    color:rgb(207, 168, 158)  
}
```

If you want to add a text shadow in that color use the text-shadow property, you can generate a text shadow directly with our [CSS Text Shadow Generator](#).

Here you see how black text with a 4 pixel rgb(207, 168, 158) colored shadow looks like.

```
.shadow{ text-shadow: 4px 4px 2px rgb(207, 168, 158) }
```

Border

The CSS property to change the border of an element to CIELCh 72, 16.551, 39.595 is called "border". The border property can be set on classes, ids or directly on the HTML element.

This example shows the color as border, it can be applied via the CSS property "border" or "border-color".

```
.border, #border, table{ border:4px solid rgb(207, 168, 158) }
```

If only the border color should be changed use the property `border-color`.

```
.border{ border-color:rgb(207, 168, 158) }
```

If you want to add a box shadow in that color use:

Here you see how a box with a 4 pixel `rgb(207, 168, 158)` colored shadow looks like.

```
.boxshadow{ -moz-box-shadow:4px 4px 4px  
4px rgb(207, 168, 158); -webkit-box-  
shadow:4px 4px 4px 4px rgb(207, 168, 158);  
box-shadow:4px 4px 4px 4px rgb(207, 168,  
158) }
```

Background

The CSS property to change the background color of an element to CIELCh 72, 16.551, 39.595 is called "background". The background property can be set on classes, ids or directly on the HTML element.

```
.background, #background, body{  
background: rgb(207, 168, 158) }
```

If only the background color should be changed can be used:

```
.background{ background-color: rgb(207,  
168, 158) }
```

This example shows the color as background, it is applied via the CSS property "background".

To optimize and compress your CSS code, you can use our [online CSS compressor and optimizer](#) based on csstidy. If you want to create a linear or radial gradient as background or border, check our [CSS Gradient Generator](#).

Hey! You found this booklet interesting? Support Converting Colors with the new Membership Option!

The pro membership hides all ads, plus gives you double the colors in the color bucket, and more awesome pro features!

[Learn more, Memberships starting at \\$2.50/m!](#)

**Follow me
on Twitter!**

@ConvertingColor