

Converting Colors

CIELCh(72, 17.248, 13.458)

Have a look what the booklet for
CIELCh(72, 17.248, 13.458) contains.

CIELCh(72, 17.261, 13.792)	3
<i>Conversions</i>	4
<i>Details</i>	6
<i>Harmonies</i>	11
<i>Previews</i>	20
<i>Color Blindness Simulation</i>	23
<i>CSS Examples</i>	26

Color

CIELCh(72, 17.261, 13.792)

Conversions

Conversions Part 1	
Format	Color
Hex	D2A6AA
RGB	210, 166, 170
RGB Percent	82%, 65%, 67%
CMY	0.1781, 0.3505, 0.3349
CMYK	0.00, 0.21, 0.19, 0.18
HSL	355°, 33%, 74%
HSV	355°, 21%, 82%
XYZ	47.2450, 43.6590, 43.7734
YIQ	179.6120, 24.9400, 10.5720

Conversions

Conversions Part 2

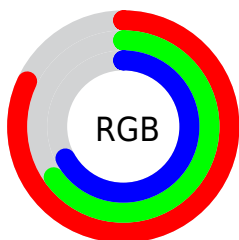
Format	Color
RYB	210, 166, 170
Decimal	13805226
CIELab	72.00, 16.76, 4.11
CIELCh	72, 17.261, 13.792
Yxy	43.6590, 0.3508, 0.3242
Android (android.graphics.Color)	4291995306 (0xFFD2A6AA)
YUV	179.6120, -4.7387, 26.6503
Hunter-Lab	66.0750, 12.0002, 6.9740

Details

The CIELCh color **72, 17.261, 13.792** is a light color, and the websafe version is hex **CC9999**. A complement of this color would be **81, 15.397, 190.342**, and the grayscale version is **73, 0.009, 296.813**.

A 20% lighter version of the original color is **91, 12.598, 10.874**, and **52, 17.288, 13.871** is the 20% darker color. If you saturate the color by 10%, you get **67, 26.285, 15.075**, and if you desaturate by 10%, it is **78, 8.741, 12.745**.

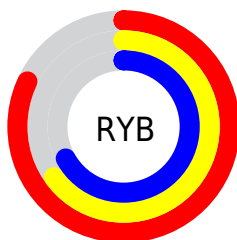
Distribution



Red (82%)

Green (65%)

Blue (67%)



Red (82%)

Yellow (65%)

Blue (67%)

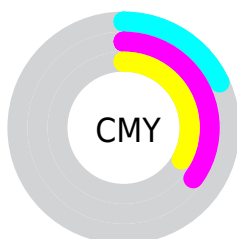


Cyan (0%)

Magenta (21%)

Yellow (19%)

Black (18%)



Cyan (18%)

Magenta (35%)

Yellow (33%)


Brightness & Saturation Gradients

These gradients show how the CIELCh color 72, 17.261, 13.792 changes by changing the brightness by 10 percent. The first figure shows a shift by +10% for each color and the second figure -10%.

Similar to the brightness gradients but the following saturation gradients show a change of the CIELCh color 72, 17.261, 13.792 by changing the saturation by 10% instead.

 72, 17.261, 13.792

 72, 17.261, 13.792

 100, 17.261,
13.792

 62, 17.261, 13.792

 92, 17.261, 13.792

 52, 17.261, 13.792

 42, 17.261, 13.792

 32, 17.261, 13.792

 22, 17.261, 13.792

 12, 17.261, 13.792

 2, 17.261, 13.792

 0, 17.261, 13.792

 72, 17.261, 13.792

 72, 17.261, 13.792

 67, 26.285, 15.075

 78, 8.741, 12.745


 61, 35.728, 16.674

 83, 0.758, 11.235


 57, 45.415, 18.704

 89, 6.702, 191.354

 52, 55.081, 21.295

 95, 13.671,
190.721

 49, 64.402, 24.565

 97, 15.129,
198.498

 46, 73.053, 28.542

 45, 80.701, 32.991

 44, 86.369, 36.662

Harmonies

Complementary

The Complementary color scheme is a pair of colors which are on the opposite of each other on the color wheel.



72, 17.261, 13.792



81, 15.397, 190.342

Rectangle

The Rectangle color scheme consists of four colors that form a rectangle on the color wheel.



72, 17.261, 13.792



72, 17.261, 63.792



72, 17.261, 193.792



72, 17.261, 243.792

Sweetspot

The Sweet Spot groups the original color and five complimentary colors.



72, 17.259, 13.798



96, 5.508, 12.259



73, 27.818, 322.724



51, 3.662, 12.327



0, 0.000, 0.000



53, 0.007, 296.813

Same Dimension

The Same Dimension uses a secret algorithm to generate beautiful new colors.



72, 17.259, 13.798



83, 24.443, 14.314



76, 14.083, 61.750



41, 4.484, 12.591



35, 72.771, 35.991



4, 20.048, 15.234

Inverse Universe

The Inverse Universe completely reimagines the original color for something new.



72, 17.259, 13.798



83, 24.443, 14.314



76, 12.860, 246.552



41, 4.484, 12.591



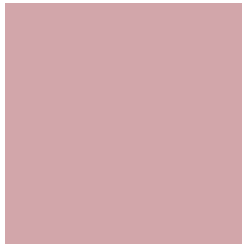
35, 72.771, 35.991



4, 20.048, 15.234

Previews

White Background



This preview shows how the CIELCh color 72, 17.261, 13.792 looks on a white background.

Color Contrast Check

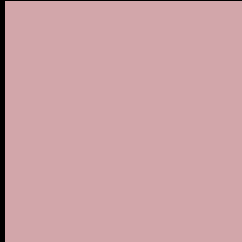
Large Text (above 18pt) WCAG AA × Fail

Any Text WCAG AA × Fail

Large Text (above 18pt) WCAG AAA × Fail

Any Text WCAG AAA × Fail

Black Background



This preview shows how the CIELCh color 72, 17.261, 13.792 looks on a black background.

Color Contrast Check

Large Text (above 18pt) WCAG AA ✓ Pass

Any Text WCAG AA ✓ Pass

Large Text (above 18pt) WCAG AAA ✓ Pass

Any Text WCAG AAA ✓ Pass

If you want to check with other color combinations, try the [Color Contrast Checker](#).

CIELCh 72, 17.261, 13.792

Background



This preview shows how black text looks on a background with the CIELCh color 72, 17.261, 13.792.



This preview shows how white text looks on a background with the CIELCh color 72, 17.261, 13.792.

Color Blindness Simulation

Color vision deficiency is a very complex topic, and I could not describe the different causes any better than Wikipedia does, so if you want to learn more, you should check out their [article about color blindness](#).

Dichromacy



Original Color

72, 17.261, 13.792

Protanopia

72, 1.593, 39.106

Deuteranopia

72, 10.133, 26.329



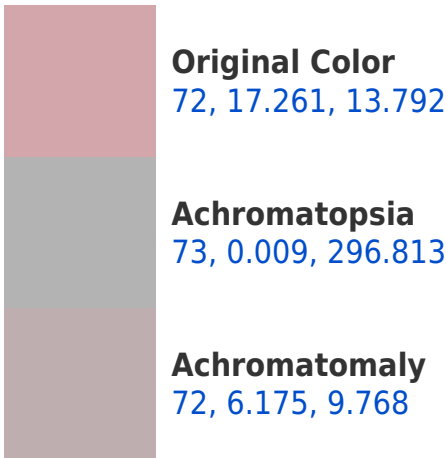
Tritanopia

72, 18.954, 359.439

Trichromacy



Monochromacy



CSS Examples

Text

The CSS property to change the color of the text to CIELCh 72, 17.261, 13.792 is called "color". The color property can be set on classes, ids or directly on the HTML element.

This example shows how text in the color `rgb(210, 166, 170)` looks like.

```
.text, #text, p{  
    color:rgb(210, 166, 170)  
}
```

If you want to add a text shadow in that color use the text-shadow property, you can generate a text shadow directly with our [CSS Text Shadow Generator](#).

Here you see how black text with a 4 pixel rgb(210, 166, 170) colored shadow looks like.

```
.shadow{ text-shadow: 4px 4px 2px rgb(210, 166, 170) }
```

Border

The CSS property to change the border of an element to CIELCh 72, 17.261, 13.792 is called "border". The border property can be set on classes, ids or directly on the HTML element.

This example shows the color as border, it can be applied via the CSS property "border" or "border-color".

```
.border, #border, table{ border:4px solid rgb(210, 166, 170) }
```

If only the border color should be changed use the property border-color.

```
.border{ border-color:rgb(210, 166, 170) }
```

If you want to add a box shadow in that color use:

Here you see how a box with a 4 pixel rgb(210, 166, 170) colored shadow looks like.

```
.boxshadow{ -moz-box-shadow:4px 4px 4px  
4px rgb(210, 166, 170); -webkit-box-  
shadow:4px 4px 4px 4px rgb(210, 166, 170);  
box-shadow:4px 4px 4px 4px rgb(210, 166,  
170) }
```

Background

The CSS property to change the background color of an element to CIELCh 72, 17.261, 13.792 is called "background". The background property can be set on classes, ids or directly on the HTML element.

```
.background, #background, body{  
background: rgb(210, 166, 170) }
```

If only the background color should be changed can be used:

```
.background{ background-color: rgb(210,  
166, 170) }
```

This example shows the color as background, it is applied via the CSS property "background".

To optimize and compress your CSS code, you can use our [online CSS compressor and optimizer](#) based on csstidy. If you want to create a linear or radial gradient as background or border, check our [CSS Gradient Generator](#).

Hey! You found this booklet
interesting? Support Converting
Colors with the new Membership
Option!

The pro membership hides all ads, plus gives you
double the colors in the color bucket, and more
awesome pro features!

[Learn more, Memberships starting at \\$2.50/m!](#)

**Follow me
on Twitter!**

@ConvertingColor