

Converting Colors

CIELCh(72, 17.394, 68.339)

Have a look what the booklet for
CIELCh(72, 17.394, 68.339) contains.

CIELCh(72, 17.518, 70.153)	3
<i>Conversions</i>	4
<i>Details</i>	6
<i>Harmonies</i>	11
<i>Previews</i>	20
<i>Color Blindness Simulation</i>	23
<i>CSS Examples</i>	26

Color

CIELCh(72, 17.518, 70.153)

Conversions

Conversions Part 1

Format	Color
Hex	C7AC93
RGB	199, 172, 147
RGB Percent	78%, 67%, 58%
CMY	0.2203, 0.3261, 0.4242
CMYK	0.00, 0.14, 0.26, 0.22
HSL	29°, 32%, 68%
HSV	29°, 26%, 78%
XYZ	43.4793, 43.6590, 33.6705
YIQ	177.2230, 24.1170, -2.0510

Conversions

Conversions Part 2

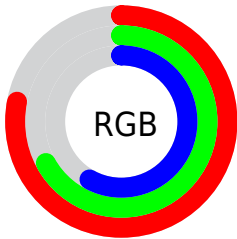
Format	Color
R _Y B	199, 195, 147
Decimal	13085843
CIE Lab	72.00, 5.95, 16.48
CIE LCh	72, 17.518, 70.153
Yxy	43.6590, 0.3599, 0.3614
Android (android.graphics.Color)	4291275923 (0xFFC7AC93)
YUV	177.2230, -14.8999, 19.0984
Hunter-Lab	66.0750, 1.8272, 16.0395

Details

The CIELCh color $72, 17.518, 70.153$ is a light color, and the websafe version is hex `CC9999`. A complement of this color would be $70, 16.181, 257.211$, and the grayscale version is $72, 0.009, 296.813$.

A 20% lighter version of the original color is $92, 17.165, 70.788$, and $52, 17.589, 71.391$ is the 20% darker color. If you saturate the color by 10%, you get $69, 24.842, 68.952$, and if you desaturate by 10%, it is $75, 10.549, 71.358$.

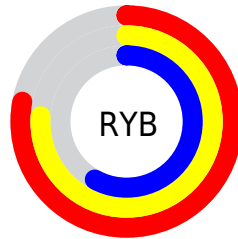
Distribution



Red (78%)

Green (67%)

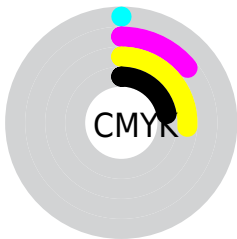
Blue (58%)



Red (78%)

Yellow (76%)

Blue (58%)

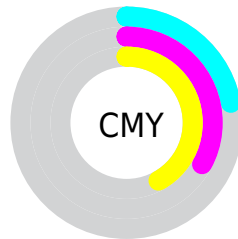


Cyan (0%)

Magenta (14%)

Yellow (26%)

Black (22%)



Cyan (22%)

Magenta (33%)

Yellow (42%)

Brightness & Saturation Gradients

These gradients show how the CIELCh color 72, 17.518, 70.153 changes by changing the brightness by 10 percent. The first figure shows a shift by +10% for each color and the second figure -10%.

Similar to the brightness gradients but the following saturation gradients show a change of the CIELCh color 72, 17.518, 70.153 by changing the saturation by 10% instead.

■ 72, 17.518, 70.153

■ 72, 17.518, 70.153

■ 100, 17.518,
70.153

■ 62, 17.518, 70.153

■ 92, 17.518, 70.153

■ 52, 17.518, 70.153

■ 42, 17.518, 70.153

■ 32, 17.518, 70.153

■ 22, 17.518, 70.153

■ 12, 17.518, 70.153

■ 2, 17.518, 70.153

■ 0, 17.518, 70.153

■ 72, 17.518, 70.153

■ 72, 17.518, 70.153

69, 24.842, 68.952

75, 10.549, 71.358

66, 32.516, 67.738

78, 3.916, 72.495

63, 40.493, 66.513

81, 2.409, 253.929

60, 48.636, 65.245

85, 8.455, 254.965

58, 56.636, 63.846

88, 14.255,
256.063

55, 63.880, 62.128

91, 15.628,
243.925

53, 69.421, 59.763

52, 71.342, 58.837

93, 15.719,
219.646

96, 18.257,
199.259

96, 18.460,
198.285

Harmonies

Complementary

The Complementary color scheme is a pair of colors which are on the opposite of each other on the color wheel.



72, 17.518, 70.153



70, 16.181, 257.211

Rectangle

The Rectangle color scheme consists of four colors that form a rectangle on the color wheel.



72, 17.518, 70.153



72, 17.518, 120.153



72, 17.518, 250.153



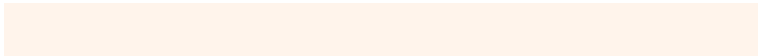
72, 17.518, 300.153

Sweetspot

The Sweet Spot groups the original color and five complimentary colors.



72, 17.518, 70.162



97, 6.268, 72.284



67, 24.867, 344.171



51, 4.472, 72.114



0, 0.000, 0.000



53, 0.007, 296.813

Same Dimension

The Same Dimension uses a secret algorithm to generate beautiful new colors.



72, 17.518, 70.162



88, 25.764, 69.520



79, 26.558, 106.226



40, 3.643, 72.143



43, 61.416, 59.427



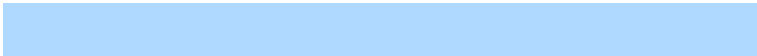
7, 12.952, 55.188

Inverse Universe

The Inverse Universe completely reimagines the original color for something new.



70, 16.181, 257.211



85, 23.367, 258.234



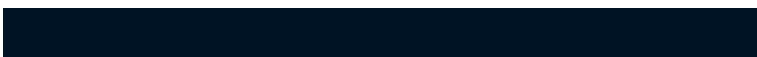
63, 28.135, 291.983



40, 3.555, 254.574



36, 49.315, 281.655



5, 13.712, 268.594

Previews

White Background



This preview shows how the CIELCh color 72, 17.518, 70.153 looks on a white background.

Color Contrast Check

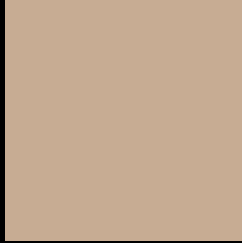
Large Text (above 18pt) WCAG AA × Fail

Any Text WCAG AA × Fail

Large Text (above 18pt) WCAG AAA × Fail

Any Text WCAG AAA × Fail

Black Background



This preview shows how the CIELCh color 72, 17.518, 70.153 looks on a black background.

Color Contrast Check

Large Text (above 18pt) WCAG AA ✓ Pass

Any Text WCAG AA ✓ Pass

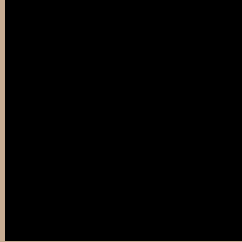
Large Text (above 18pt) WCAG AAA ✓ Pass

Any Text WCAG AAA ✓ Pass

If you want to check with other color combinations, try the [Color Contrast Checker](#).

CIELCh 72, 17.518, 70.153

Background



This preview shows how black text looks on a background with the CIELCh color 72, 17.518, 70.153.



This preview shows how white text looks on a background with the CIELCh color 72, 17.518, 70.153.

Color Blindness Simulation

Color vision deficiency is a very complex topic, and I could not describe the different causes any better than Wikipedia does, so if you want to learn more, you should check out their [article about color blindness](#).

Dichromacy



Original Color

72, 17.518, 70.153

Protanopia

72, 15.155, 93.436

Deuteranopia

72, 18.770, 61.473



Tritanopia
72, 15.377, 353.572

Trichromacy



Original Color
72, 17.518, 70.153

Protanomaly
72, 15.693, 82.941

Deuteranomaly
72, 18.234, 65.198

Tritanomaly
72, 12.473, 22.928

Monochromacy



Original Color
72, 17.518, 70.153

Achromatopsia
72, 0.009, 296.813

Achromatomaly
72, 6.208, 71.256

CSS Examples

Text

The CSS property to change the color of the text to CIELCh 72, 17.518, 70.153 is called "color". The color property can be set on classes, ids or directly on the HTML element.

This example shows how text in the color `rgb(199, 172, 147)` looks like.

```
.text, #text, p{  
    color:rgb(199, 172, 147)  
}
```

If you want to add a text shadow in that color use the text-shadow property, you can generate a text shadow directly with our [CSS Text Shadow Generator](#).

Here you see how black text with a 4 pixel rgb(199, 172, 147) colored shadow looks like.

```
.shadow{ text-shadow: 4px 4px 2px rgb(199, 172, 147) }
```

Border

The CSS property to change the border of an element to CIELCh 72, 17.518, 70.153 is called "border". The border property can be set on classes, ids or directly on the HTML element.

This example shows the color as border, it can be applied via the CSS property "border" or "border-color".

```
.border, #border, table{ border:4px solid rgb(199, 172, 147) }
```

If only the border color should be changed use the property `border-color`.

```
.border{ border-color:rgb(199, 172, 147) }
```

If you want to add a box shadow in that color use:

Here you see how a box with a 4 pixel `rgb(199, 172, 147)` colored shadow looks like.

```
.boxshadow{ -moz-box-shadow:4px 4px 4px  
4px rgb(199, 172, 147); -webkit-box-  
shadow:4px 4px 4px 4px rgb(199, 172, 147);  
box-shadow:4px 4px 4px 4px rgb(199, 172,  
147) }
```

Background

The CSS property to change the background color of an element to CIELCh 72, 17.518, 70.153 is called "background". The background property can be set on classes, ids or directly on the HTML element.

```
.background, #background, body{  
background: rgb(199, 172, 147) }
```

If only the background color should be changed can be used:

```
.background{ background-color: rgb(199,  
172, 147) }
```

This example shows the color as background, it is applied via the CSS property "background".

To optimize and compress your CSS code, you can use our [online CSS compressor and optimizer](#) based on csstidy. If you want to create a linear or radial gradient as background or border, check our [CSS Gradient Generator](#).

Hey! You found this booklet interesting? Support Converting Colors with the new Membership Option!

The pro membership hides all ads, plus gives you double the colors in the color bucket, and more awesome pro features!

[Learn more, Memberships starting at \\$2.50/m!](#)

**Follow me
on Twitter!**

@ConvertingColor