

Converting Colors

CIELCh(72, 17.687, 40.444)

Have a look what the booklet for
CIELCh(72, 17.687, 40.444) contains.

CIELCh(72, 17.962, 39.959)	3
<i>Conversions</i>	4
<i>Details</i>	6
<i>Harmonies</i>	11
<i>Previews</i>	20
<i>Color Blindness Simulation</i>	23
<i>CSS Examples</i>	26

Color

CIELCh(72, 17.962, 39.959)

Conversions

Conversions Part 1

Format	Color
Hex	D1A79C
RGB	209, 167, 156
RGB Percent	82%, 65%, 61%
CMY	0.1799, 0.3446, 0.3878
CMYK	0.00, 0.20, 0.25, 0.18
HSL	12°, 37%, 72%
HSV	12°, 25%, 82%
XYZ	46.1812, 43.6590, 37.4977
YIQ	178.3040, 28.5630, 5.4830

Conversions

Conversions Part 2

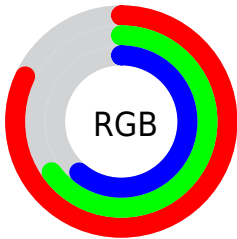
Format	Color
R _Y B	209, 170, 156
Decimal	13739932
CIE Lab	72.00, 13.77, 11.54
CIE LCh	72, 17.962, 39.959
Yxy	43.6590, 0.3627, 0.3429
Android (android.graphics.Color)	4291930012 (0xFFD1A79C)
YUV	178.3040, -10.9959, 26.9204
Hunter-Lab	66.0750, 9.1263, 12.6053

Details

The CIELCh color **72, 17.962, 39.959** is a light color, and the websafe version is hex **CC9999**. A complement of this color would be **77, 15.149, 221.543**, and the grayscale version is **73, 0.009, 296.813**.

A 20% lighter version of the original color is **91, 13.866, 46.560**, and **52, 18.038, 39.643** is the 20% darker color. If you saturate the color by 10%, you get **68, 26.113, 40.056**, and if you desaturate by 10%, it is **77, 10.433, 40.010**.

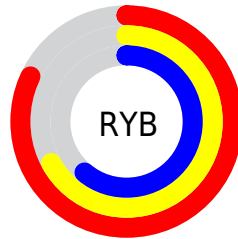
Distribution



Red (82%)

Green (65%)

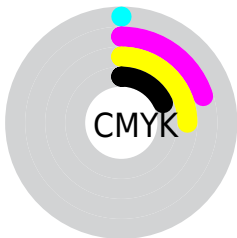
Blue (61%)



Red (82%)

Yellow (67%)

Blue (61%)

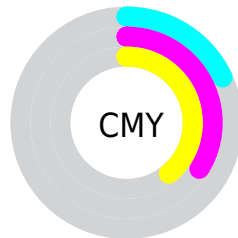


Cyan (0%)

Magenta (20%)

Yellow (25%)

Black (18%)



Cyan (18%)

Magenta (34%)

Yellow (39%)

Brightness & Saturation Gradients

These gradients show how the CIELCh color 72, 17.962, 39.959 changes by changing the brightness by 10 percent. The first figure shows a shift by +10% for each color and the second figure -10%.

Similar to the brightness gradients but the following saturation gradients show a change of the CIELCh color 72, 17.962, 39.959 by changing the saturation by 10% instead.

72, 17.962, 39.959

72, 17.962, 39.959

100, 17.962,
39.959

62, 17.962, 39.959

92, 17.962, 39.959

52, 17.962, 39.959

42, 17.962, 39.959

32, 17.962, 39.959

22, 17.962, 39.959

12, 17.962, 39.959

2, 17.962, 39.959

0, 17.962, 39.959

72, 17.962, 39.959

72, 17.962, 39.959

68, 26.113, 40.056

77, 10.433, 40.010

63, 34.907, 40.322

81, 3.489, 40.079

59, 44.314, 40.799

86, 2.924, 220.690

55, 54.224, 41.501

91, 8.861, 220.881

52, 64.370, 42.375

96, 13.768,
209.451

49, 74.144, 43.209

97, 15.274,
198.489

47, 82.234, 43.452

46, 85.412, 43.535

Harmonies

Complementary

The Complementary color scheme is a pair of colors which are on the opposite of each other on the color wheel.



72, 17.962, 39.959



77, 15.149, 221.543

Rectangle

The Rectangle color scheme consists of four colors that form a rectangle on the color wheel.



72, 17.962, 39.959



72, 17.962, 89.959



72, 17.962, 219.959



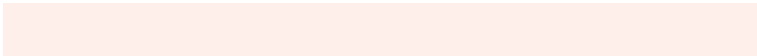
72, 17.962, 269.959

Sweetspot

The Sweet Spot groups the original color and five complimentary colors.



72, 17.961, 39.967



96, 6.201, 40.077



71, 30.089, 332.137



50, 4.434, 40.065



0, 0.000, 0.000



53, 0.007, 296.813

Same Dimension

The Same Dimension uses a secret algorithm to generate beautiful new colors.



72, 17.961, 39.967



84, 25.496, 39.992



79, 20.735, 90.519



42, 3.764, 40.067



37, 72.290, 43.918



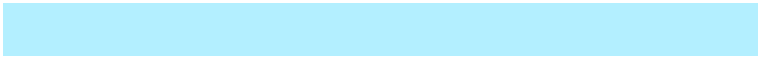
6, 17.700, 30.926

Inverse Universe

The Inverse Universe completely reimagines the original color for something new.



77, 15.149, 221.543



91, 20.693, 221.908



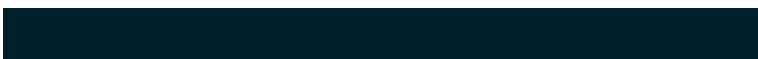
70, 20.822, 277.394



43, 3.552, 220.762



52, 32.293, 236.917



11, 12.197, 228.186

Previews

White Background



This preview shows how the CIELCh color 72, 17.962, 39.959 looks on a white background.

Color Contrast Check

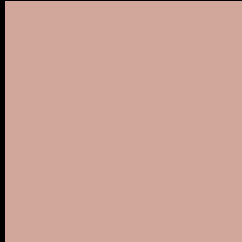
Large Text (above 18pt) WCAG AA × Fail

Any Text WCAG AA × Fail

Large Text (above 18pt) WCAG AAA × Fail

Any Text WCAG AAA × Fail

Black Background



This preview shows how the CIELCh color 72, 17.962, 39.959 looks on a black background.

Color Contrast Check

Large Text (above 18pt) WCAG AA ✓ Pass

Any Text WCAG AA ✓ Pass

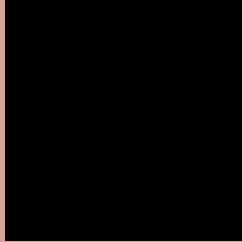
Large Text (above 18pt) WCAG AAA ✓ Pass

Any Text WCAG AAA ✓ Pass

If you want to check with other color combinations, try the [Color Contrast Checker](#).

CIELCh 72, 17.962, 39.959

Background



This preview shows how black text looks on a background with the CIELCh color 72, 17.962, 39.959.

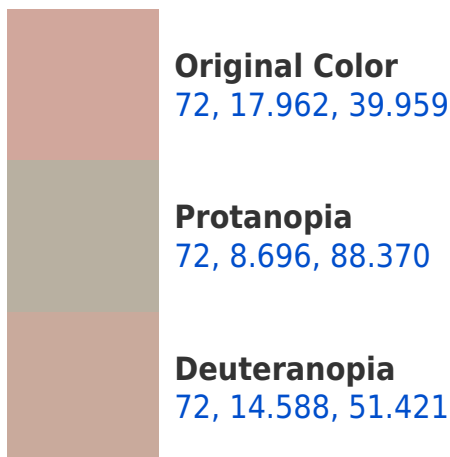


This preview shows how white text looks on a background with the CIELCh color 72, 17.962, 39.959.

Color Blindness Simulation

Color vision deficiency is a very complex topic, and I could not describe the different causes any better than Wikipedia does, so if you want to learn more, you should check out their [article about color blindness](#).

Dichromacy





Tritanopia
72, 19.316, 359.915

Trichromacy



Original Color
72, 17.962, 39.959

Protanomaly
72, 10.968, 63.444

Deuteranomaly
72, 15.754, 46.819

Tritanomaly
72, 17.678, 14.006

Monochromacy



Original Color
72, 17.962, 39.959

Achromatopsia
73, 0.009, 296.813

Achromatomaly
72, 6.148, 40.387

CSS Examples

Text

The CSS property to change the color of the text to CIELCh 72, 17.962, 39.959 is called "color". The color property can be set on classes, ids or directly on the HTML element.

This example shows how text in the color `rgb(209, 167, 156)` looks like.

```
.text, #text, p{  
    color:rgb(209, 167, 156)  
}
```

If you want to add a text shadow in that color use the text-shadow property, you can generate a text shadow directly with our [CSS Text Shadow Generator](#).

Here you see how black text with a 4 pixel rgb(209, 167, 156) colored shadow looks like.

```
.shadow{ text-shadow: 4px 4px 2px rgb(209, 167, 156) }
```

Border

The CSS property to change the border of an element to CIELCh 72, 17.962, 39.959 is called "border". The border property can be set on classes, ids or directly on the HTML element.

This example shows the color as border, it can be applied via the CSS property "border" or "border-color".

```
.border, #border, table{ border:4px solid rgb(209, 167, 156) }
```

If only the border color should be changed use the property `border-color`.

```
.border{ border-color:rgb(209, 167, 156) }
```

If you want to add a box shadow in that color use:

Here you see how a box with a 4 pixel `rgb(209, 167, 156)` colored shadow looks like.

```
.boxshadow{ -moz-box-shadow:4px 4px 4px  
4px rgb(209, 167, 156); -webkit-box-  
shadow:4px 4px 4px 4px rgb(209, 167, 156);  
box-shadow:4px 4px 4px 4px rgb(209, 167,  
156) }
```

Background

The CSS property to change the background color of an element to CIELCh 72, 17.962, 39.959 is called "background". The background property can be set on classes, ids or directly on the HTML element.

```
.background, #background, body{  
background: rgb(209, 167, 156) }
```

If only the background color should be changed can be used:

```
.background{ background-color: rgb(209,  
167, 156) }
```

This example shows the color as background, it is applied via the CSS property "background".

To optimize and compress your CSS code, you can use our [online CSS compressor and optimizer](#) based on csstidy. If you want to create a linear or radial gradient as background or border, check our [CSS Gradient Generator](#).

Hey! You found this booklet interesting? Support Converting Colors with the new Membership Option!

The pro membership hides all ads, plus gives you double the colors in the color bucket, and more awesome pro features!

[Learn more, Memberships starting at \\$2.50/m!](#)

**Follow me
on Twitter!**

@ConvertingColor