

Converting Colors

CIELCh(72, 17.860, 70.386)

Have a look what the booklet for
CIELCh(72, 17.860, 70.386) contains.

CIELCh(72, 17.958, 71.133)	3
<i>Conversions</i>	4
<i>Details</i>	6
<i>Harmonies</i>	11
<i>Previews</i>	20
<i>Color Blindness Simulation</i>	23
<i>CSS Examples</i>	26

Color

CIELCh(72, 17.958, 71.133)

Conversions

Conversions Part 1

Format	Color
Hex	C7AC92
RGB	199, 172, 146
RGB Percent	78%, 67%, 57%
CMY	0.2201, 0.3259, 0.4279
CMYK	0.00, 0.14, 0.27, 0.22
HSL	29°, 32%, 68%
HSV	29°, 27%, 78%
XYZ	43.4318, 43.6590, 33.2868
YIQ	177.1090, 24.4380, -2.3620

Conversions

Conversions Part 2

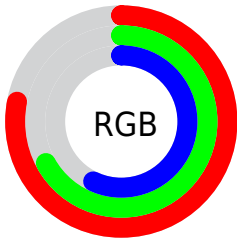
Format	Color
RYB	199, 197, 146
Decimal	13085842
CIELab	72.00, 5.81, 16.99
CIElCh	72, 17.958, 71.133
Yxy	43.6590, 0.3608, 0.3627
Android (android.graphics.Color)	4291275922 (0xFFC7AC92)
YUV	177.1090, -15.3367, 19.1984
Hunter-Lab	66.0750, 1.6988, 16.3837

Details

The CIELCh color $72, 17.958, 71.133$ is a light color, and the websafe version is hex `CC9999`. A complement of this color would be $70, 16.635, 258.415$, and the grayscale version is $72, 0.009, 296.813$.

A 20% lighter version of the original color is $92, 17.584, 71.750$, and $52, 18.070, 72.356$ is the 20% darker color. If you saturate the color by 10%, you get $69, 25.312, 69.909$, and if you desaturate by 10%, it is $75, 10.948, 72.358$.

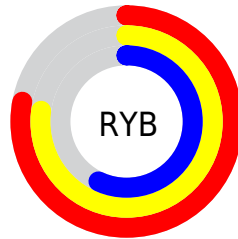
Distribution



Red (78%)

Green (67%)

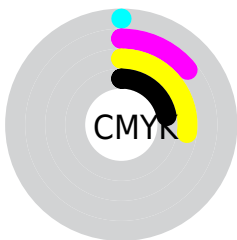
Blue (57%)



Red (78%)

Yellow (77%)

Blue (57%)

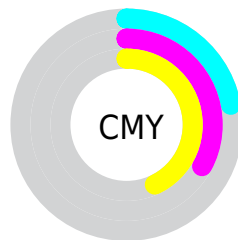


Cyan (0%)

Magenta (14%)

Yellow (27%)

Black (22%)



Cyan (22%)

Magenta (33%)

Yellow (43%)

Brightness & Saturation Gradients

These gradients show how the CIELCh color 72, 17.958, 71.133 changes by changing the brightness by 10 percent. The first figure shows a shift by +10% for each color and the second figure -10%.

Similar to the brightness gradients but the following saturation gradients show a change of the CIELCh color 72, 17.958, 71.133 by changing the saturation by 10% instead.

■ 72, 17.958, 71.133

■ 72, 17.958, 71.133

■ 100, 17.958,
71.133

■ 62, 17.958, 71.133

■ 92, 17.958, 71.133

■ 52, 17.958, 71.133

■ 42, 17.958, 71.133

■ 32, 17.958, 71.133

■ 22, 17.958, 71.133

■ 12, 17.958, 71.133

■ 2, 17.958, 71.133

■ 0, 17.958, 71.133

■ 72, 17.958, 71.133

■ 72, 17.958, 71.133

69, 25.312, 69.909

75, 10.948, 72.358

66, 33.001, 68.668

78, 4.265, 73.519

63, 40.971, 67.410

81, 2.117, 254.975

61, 49.075, 66.101

84, 8.226, 256.006

58, 56.986, 64.652

88, 14.092,
257.113

56, 64.070, 62.867

91, 15.765,
246.480

53, 69.407, 60.436

53, 71.048, 59.622

93, 15.544,
222.609

96, 17.759,
201.782

96, 18.442,
198.286

Harmonies

Complementary

The Complementary color scheme is a pair of colors which are on the opposite of each other on the color wheel.



72, 17.958, 71.133



70, 16.635, 258.415

Rectangle

The Rectangle color scheme consists of four colors that form a rectangle on the color wheel.



72, 17.958, 71.133



72, 17.958, 121.133



72, 17.958, 251.133



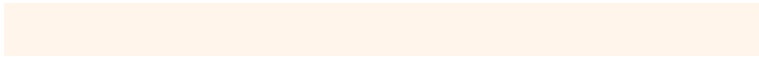
72, 17.958, 301.133

Sweetspot

The Sweet Spot groups the original color and five complimentary colors.



72, 17.958, 71.141



97, 6.306, 73.357



66, 25.087, 345.133



51, 4.499, 73.184



0, 0.000, 0.000



53, 0.007, 296.813

Same Dimension

The Same Dimension uses a secret algorithm to generate beautiful new colors.



72, 17.958, 71.141



88, 26.770, 70.425



79, 27.494, 106.907



40, 3.665, 73.214



44, 61.161, 60.212



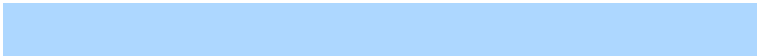
7, 12.950, 56.341

Inverse Universe

The Inverse Universe completely reimagines the original color for something new.



70, 16.635, 258.415



84, 24.331, 259.559



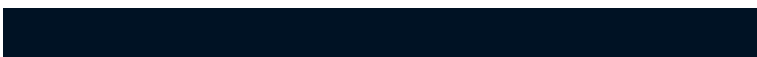
63, 29.227, 292.713



40, 3.581, 255.665



36, 50.294, 282.672



5, 13.869, 269.487

Previews

White Background



This preview shows how the CIELCh color 72, 17.958, 71.133 looks on a white background.

Color Contrast Check

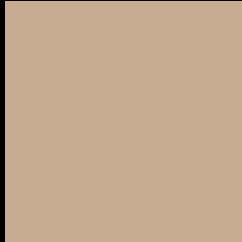
Large Text (above 18pt) WCAG AA × Fail

Any Text WCAG AA × Fail

Large Text (above 18pt) WCAG AAA × Fail

Any Text WCAG AAA × Fail

Black Background



This preview shows how the CIELCh color 72, 17.958, 71.133 looks on a black background.

Color Contrast Check

Large Text (above 18pt) WCAG AA ✓ Pass

Any Text WCAG AA ✓ Pass

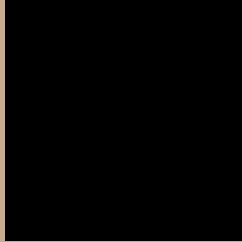
Large Text (above 18pt) WCAG AAA ✓ Pass

Any Text WCAG AAA ✓ Pass

If you want to check with other color combinations, try the [Color Contrast Checker](#).

CIELCh 72, 17.958, 71.133

Background



This preview shows how black text looks on a background with the CIELCh color 72, 17.958, 71.133.



This preview shows how white text looks on a background with the CIELCh color 72, 17.958, 71.133.

Color Blindness Simulation

Color vision deficiency is a very complex topic, and I could not describe the different causes any better than Wikipedia does, so if you want to learn more, you should check out their [article about color blindness](#).

Dichromacy



Original Color

72, 17.958, 71.133

Protanopia

72, 15.678, 93.876

Deuteranopia

72, 19.163, 62.570



Tritanopia
72, 15.377, 353.572

Trichromacy



Original Color
72, 17.958, 71.133

Protanomaly
72, 16.500, 85.674

Deuteranomaly
72, 18.648, 66.249

Tritanomaly
72, 12.871, 22.887

Monochromacy



Original Color
72, 17.958, 71.133

Achromatopsia
72, 0.009, 296.813

Achromatomaly
72, 6.208, 71.256

CSS Examples

Text

The CSS property to change the color of the text to CIELCh 72, 17.958, 71.133 is called "color". The color property can be set on classes, ids or directly on the HTML element.

This example shows how text in the color `rgb(199, 172, 146)` looks like.

```
.text, #text, p{  
    color:rgb(199, 172, 146)  
}
```

If you want to add a text shadow in that color use the text-shadow property, you can generate a text shadow directly with our [CSS Text Shadow Generator](#).

Here you see how black text with a 4 pixel rgb(199, 172, 146) colored shadow looks like.

```
.shadow{ text-shadow: 4px 4px 2px rgb(199, 172, 146) }
```

Border

The CSS property to change the border of an element to CIELCh 72, 17.958, 71.133 is called "border". The border property can be set on classes, ids or directly on the HTML element.

This example shows the color as border, it can be applied via the CSS property "border" or "border-color".

```
.border, #border, table{ border:4px solid rgb(199, 172, 146) }
```

If only the border color should be changed use the property `border-color`.

```
.border{ border-color:rgb(199, 172, 146) }
```

If you want to add a box shadow in that color use:

Here you see how a box with a 4 pixel `rgb(199, 172, 146)` colored shadow looks like.

```
.boxshadow{ -moz-box-shadow:4px 4px 4px  
4px rgb(199, 172, 146); -webkit-box-  
shadow:4px 4px 4px 4px rgb(199, 172, 146);  
box-shadow:4px 4px 4px 4px rgb(199, 172,  
146) }
```

Background

The CSS property to change the background color of an element to CIELCh 72, 17.958, 71.133 is called "background". The background property can be set on classes, ids or directly on the HTML element.

```
.background, #background, body{  
background: rgb(199, 172, 146) }
```

If only the background color should be changed can be used:

```
.background{ background-color: rgb(199,  
172, 146) }
```

This example shows the color as background, it is applied via the CSS property "background".

To optimize and compress your CSS code, you can use our [online CSS compressor and optimizer](#) based on csstidy. If you want to create a linear or radial gradient as background or border, check our [CSS Gradient Generator](#).

Hey! You found this booklet interesting? Support Converting Colors with the new Membership Option!

The pro membership hides all ads, plus gives you double the colors in the color bucket, and more awesome pro features!

[Learn more, Memberships starting at \\$2.50/m!](#)

**Follow me
on Twitter!**

@ConvertingColor