

Converting Colors

CIELCh(72, 18.033, 27.788)

Have a look what the booklet for
CIELCh(72, 18.033, 27.788) contains.

CIELCh(72, 18.009, 27.781)	3
<i>Conversions</i>	4
<i>Details</i>	6
<i>Harmonies</i>	11
<i>Previews</i>	20
<i>Color Blindness Simulation</i>	23
<i>CSS Examples</i>	26

Color

CIELCh(72, 18.009, 27.781)

Conversions

Conversions Part 1

Format	Color
Hex	D3A6A2
RGB	211, 166, 162
RGB Percent	83%, 65%, 64%
CMY	0.1731, 0.3495, 0.3652
CMYK	0.00, 0.21, 0.23, 0.17
HSL	5°, 36%, 73%
HSV	5°, 23%, 83%
XYZ	46.9486, 43.6590, 40.0759
YIQ	178.9990, 28.1040, 8.2960

Conversions

Conversions Part 2

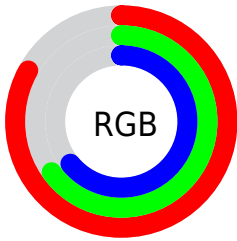
Format	Color
RYB	211, 166, 162
Decimal	13870754
CIELab	72.00, 15.93, 8.39
CIELCh	72, 18.009, 27.781
Yxy	43.6590, 0.3593, 0.3341
Android (android.graphics.Color)	4292060834 (0xFFD3A6A2)
YUV	178.9990, -8.3805, 28.0649
Hunter-Lab	66.0750, 11.1994, 10.2918

Details

The CIELCh color **72, 18.009, 27.781** is a light color, and the websafe version is hex **CC9999**. A complement of this color would be **80, 15.348, 206.382**, and the grayscale version is **73, 0.009, 296.813**.

A 20% lighter version of the original color is **91, 12.770, 29.504**, and **52, 18.214, 28.639** is the 20% darker color. If you saturate the color by 10%, you get **67, 26.823, 28.561**, and if you desaturate by 10%, it is **77, 9.843, 27.216**.

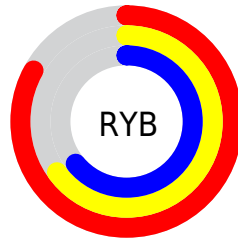
Distribution



Red (83%)

Green (65%)

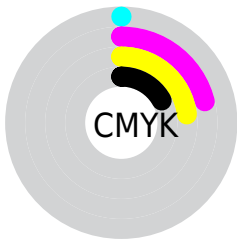
Blue (64%)



Red (83%)

Yellow (65%)

Blue (64%)

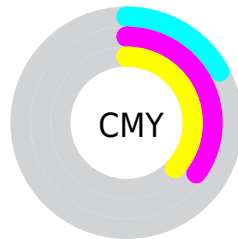


Cyan (0%)

Magenta (21%)

Yellow (23%)

Black (17%)



Cyan (17%)

Magenta (35%)

Yellow (37%)

Brightness & Saturation Gradients

These gradients show how the CIELCh color 72, 18.009, 27.781 changes by changing the brightness by 10 percent. The first figure shows a shift by +10% for each color and the second figure -10%.

Similar to the brightness gradients but the following saturation gradients show a change of the CIELCh color 72, 18.009, 27.781 by changing the saturation by 10% instead.

72, 18.009, 27.781

72, 18.009, 27.781

100, 18.009,
27.781

62, 18.009, 27.781

92, 18.009, 27.781

52, 18.009, 27.781

42, 18.009, 27.781

32, 18.009, 27.781

22, 18.009, 27.781

12, 18.009, 27.781

2, 18.009, 27.781

0, 18.009, 27.781

72, 18.009, 27.781

72, 18.009, 27.781

67, 26.823, 28.561

77, 9.843, 27.216

62, 36.271, 29.609

83, 2.309, 26.641

57, 46.270, 31.008

88, 4.642, 206.758

53, 56.648, 32.822

94, 11.063,
206.519

50, 67.103, 35.058

97, 14.726,
198.525

47, 77.074, 37.539

45, 85.349, 39.670

45, 89.456, 40.797

Harmonies

Complementary

The Complementary color scheme is a pair of colors which are on the opposite of each other on the color wheel.



72, 18.009, 27.781



80, 15.348, 206.382

Rectangle

The Rectangle color scheme consists of four colors that form a rectangle on the color wheel.



72, 18.009, 27.781



72, 18.009, 77.781



72, 18.009, 207.781



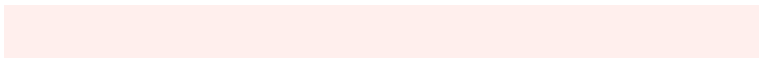
72, 18.009, 257.781

Sweetspot

The Sweet Spot groups the original color and five complimentary colors.



72, 18.007, 27.788



96, 5.923, 26.910



72, 30.444, 327.595



50, 3.858, 26.941



0, 0.000, 0.000



53, 0.007, 296.813

Same Dimension

The Same Dimension uses a secret algorithm to generate beautiful new colors.



72, 18.007, 27.788



83, 25.850, 28.150



78, 17.073, 79.270



41, 4.126, 27.027



35, 75.315, 40.920



5, 19.042, 23.607

Inverse Universe

The Inverse Universe completely reimagines the original color for something new.



80, 15.348, 206.382



94, 21.183, 206.344



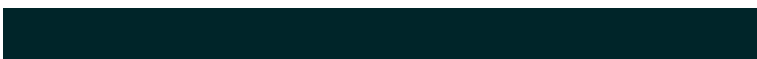
74, 16.450, 265.779



43, 3.883, 206.648



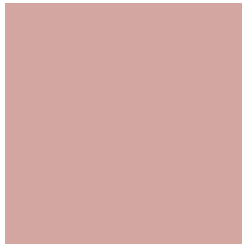
58, 33.225, 210.474



13, 12.908, 207.493

Previews

White Background



This preview shows how the CIELCh color 72, 18.009, 27.781 looks on a white background.

Color Contrast Check

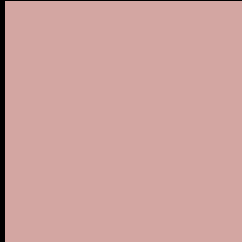
Large Text (above 18pt) WCAG AA × Fail

Any Text WCAG AA × Fail

Large Text (above 18pt) WCAG AAA × Fail

Any Text WCAG AAA × Fail

Black Background



This preview shows how the CIE LCh color 72, 18.009, 27.781 looks on a black background.

Color Contrast Check

Large Text (above 18pt) WCAG AA ✓ Pass

Any Text WCAG AA ✓ Pass

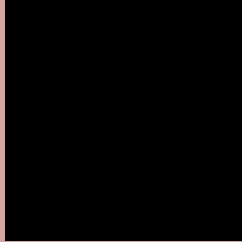
Large Text (above 18pt) WCAG AAA ✓ Pass

Any Text WCAG AAA ✓ Pass

If you want to check with other color combinations, try the [Color Contrast Checker](#).

CIELCh 72, 18.009, 27.781

Background



This preview shows how black text looks on a background with the CIELCh color 72, 18.009, 27.781.

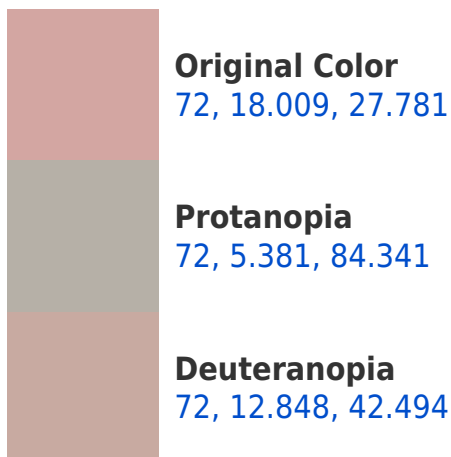


This preview shows how white text looks on a background with the CIELCh color 72, 18.009, 27.781.

Color Blindness Simulation

Color vision deficiency is a very complex topic, and I could not describe the different causes any better than Wikipedia does, so if you want to learn more, you should check out their [article about color blindness](#).

Dichromacy





Tritanopia
72, 19.901, 2.303

Trichromacy



Original Color
72, 18.009, 27.781

Protanomaly
72, 8.664, 45.854

Deuteranomaly
72, 14.563, 37.704

Tritanomaly
72, 18.543, 11.072

Monochromacy



Original Color
72, 18.009, 27.781

Achromatopsia
73, 0.009, 296.813

Achromatomaly
72, 6.519, 24.632

CSS Examples

Text

The CSS property to change the color of the text to CIELCh 72, 18.009, 27.781 is called "color". The color property can be set on classes, ids or directly on the HTML element.

This example shows how text in the color `rgb(211, 166, 162)` looks like.

```
.text, #text, p{  
    color:rgb(211, 166, 162)  
}
```

If you want to add a text shadow in that color use the text-shadow property, you can generate a text shadow directly with our [CSS Text Shadow Generator](#).

Here you see how black text with a 4 pixel rgb(211, 166, 162) colored shadow looks like.

```
.shadow{ text-shadow: 4px 4px 2px rgb(211, 166, 162) }
```

Border

The CSS property to change the border of an element to CIELCh 72, 18.009, 27.781 is called "border". The border property can be set on classes, ids or directly on the HTML element.

This example shows the color as border, it can be applied via the CSS property "border" or "border-color".

```
.border, #border, table{ border:4px solid rgb(211, 166, 162) }
```

If only the border color should be changed use the property `border-color`.

```
.border{ border-color:rgb(211, 166, 162) }
```

If you want to add a box shadow in that color use:

Here you see how a box with a 4 pixel `rgb(211, 166, 162)` colored shadow looks like.

```
.boxshadow{ -moz-box-shadow:4px 4px 4px  
4px rgb(211, 166, 162); -webkit-box-  
shadow:4px 4px 4px 4px rgb(211, 166, 162);  
box-shadow:4px 4px 4px 4px rgb(211, 166,  
162) }
```

Background

The CSS property to change the background color of an element to CIELCh 72, 18.009, 27.781 is called "background". The background property can be set on classes, ids or directly on the HTML element.

```
.background, #background, body{  
background: rgb(211, 166, 162) }
```

If only the background color should be changed can be used:

```
.background{ background-color: rgb(211,  
166, 162) }
```

This example shows the color as background, it is applied via the CSS property "background".

To optimize and compress your CSS code, you can use our [online CSS compressor and optimizer](#) based on csstidy. If you want to create a linear or radial gradient as background or border, check our [CSS Gradient Generator](#).

Hey! You found this booklet interesting? Support Converting Colors with the new Membership Option!

The pro membership hides all ads, plus gives you double the colors in the color bucket, and more awesome pro features!

[Learn more, Memberships starting at \\$2.50/m!](#)

**Follow me
on Twitter!**

@ConvertingColor