

Converting Colors

CIELCh(72, 18.042, 69.568)

Have a look what the booklet for
CIELCh(72, 18.042, 69.568) contains.

CIELCh(72, 18.221, 70.123)	3
<i>Conversions</i>	4
<i>Details</i>	6
<i>Harmonies</i>	11
<i>Previews</i>	20
<i>Color Blindness Simulation</i>	23
<i>CSS Examples</i>	26

Color

CIELCh(72, 18.221, 70.123)

Conversions

Conversions Part 1

Format	Color
Hex	C8AC92
RGB	200, 172, 146
RGB Percent	78%, 67%, 57%
CMY	0.2172, 0.3269, 0.4288
CMYK	0.00, 0.14, 0.27, 0.22
HSL	29°, 33%, 68%
HSV	29°, 27%, 78%
XYZ	43.5632, 43.6590, 33.1815
YIQ	177.4080, 25.0340, -2.1500

Conversions

Conversions Part 2

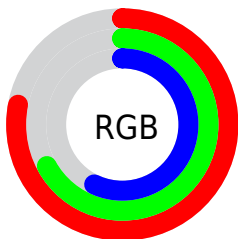
Format	Color
R _Y B	200, 196, 146
Decimal	13151378
CIE Lab	72.00, 6.20, 17.14
CIE LCh	72, 18.221, 70.123
Yxy	43.6590, 0.3618, 0.3626
Android (android.graphics.Color)	4291341458 (0xFFC8AC92)
YUV	177.4080, -15.4841, 19.8132
Hunter-Lab	66.0750, 2.0539, 16.4783

Details

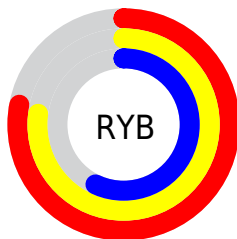
The CIELCh color $72, 18.221, 70.123$ is a light color, and the websafe version is hex `CC9999`. A complement of this color would be $70, 16.785, 257.461$, and the grayscale version is $72, 0.009, 296.813$.

A 20% lighter version of the original color is $92, 17.584, 71.750$, and $52, 18.349, 71.248$ is the 20% darker color. If you saturate the color by 10%, you get $69, 25.602, 68.919$, and if you desaturate by 10%, it is $75, 11.196, 71.331$.

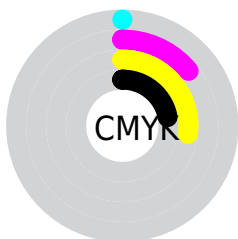
Distribution



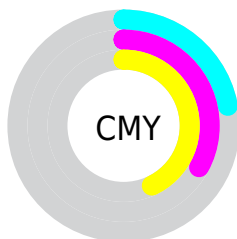
- Red (78%)
- Green (67%)
- Blue (57%)



- Red (78%)
- Yellow (77%)
- Blue (57%)



- Cyan (0%)
- Magenta (14%)
- Yellow (27%)
- Black (22%)



- Cyan (22%)
- Magenta (33%)
- Yellow (43%)


Brightness & Saturation Gradients

These gradients show how the CIELCh color 72, 18.221, 70.123 changes by changing the brightness by 10 percent. The first figure shows a shift by +10% for each color and the second figure -10%.

Similar to the brightness gradients but the following saturation gradients show a change of the CIELCh color 72, 18.221, 70.123 by changing the saturation by 10% instead.

 72, 18.221, 70.123

 72, 18.221, 70.123

 100, 18.221,
70.123

 62, 18.221, 70.123

 92, 18.221, 70.123

 52, 18.221, 70.123

 42, 18.221, 70.123

 32, 18.221, 70.123

 22, 18.221, 70.123

 12, 18.221, 70.123

 2, 18.221, 70.123

 0, 18.221, 70.123

 72, 18.221, 70.123

 72, 18.221, 70.123

69, 25.602, 68.919

75, 11.196, 71.331

66, 33.331, 67.702

78, 4.510, 72.482

63, 41.355, 66.472

81, 1.864, 253.953

60, 49.525, 65.194

85, 7.958, 254.950

58, 57.507, 63.773

88, 13.801,
256.050

55, 64.654, 62.007

91, 15.456,
244.654

53, 70.047, 59.586

53, 71.537, 58.884

94, 15.489,
219.992

96, 18.022,
199.246

96, 18.216,
198.300

Harmonies

Complementary

The Complementary color scheme is a pair of colors which are on the opposite of each other on the color wheel.



72, 18.221, 70.123



70, 16.785, 257.461

Rectangle

The Rectangle color scheme consists of four colors that form a rectangle on the color wheel.



72, 18.221, 70.123



72, 18.221, 120.123



72, 18.221, 250.123



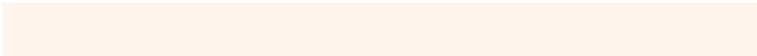
72, 18.221, 300.123

Sweetspot

The Sweet Spot groups the original color and five complimentary colors.



72, 18.221, 70.131



97, 6.271, 72.365



66, 25.808, 344.261



51, 4.474, 72.194



0, 0.000, 0.000



53, 0.007, 296.813

Same Dimension

The Same Dimension uses a secret algorithm to generate beautiful new colors.



72, 18.221, 70.131



88, 26.671, 69.475



79, 27.540, 106.136



40, 3.645, 72.224



43, 61.397, 59.485



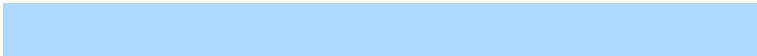
7, 12.952, 55.273

Inverse Universe

The Inverse Universe completely reimagines the original color for something new.



70, 16.785, 257.461



85, 24.115, 258.526



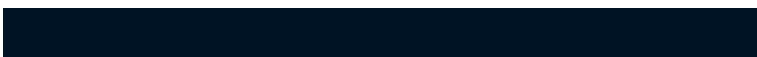
63, 29.242, 292.117



40, 3.557, 254.656



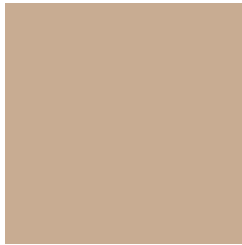
36, 49.388, 281.732



5, 13.723, 268.662

Previews

White Background



This preview shows how the CIELCh color 72, 18.221, 70.123 looks on a white background.

Color Contrast Check

Large Text (above 18pt) WCAG AA × Fail

Any Text WCAG AA × Fail

Large Text (above 18pt) WCAG AAA × Fail

Any Text WCAG AAA × Fail

Black Background



This preview shows how the CIELCh color 72, 18.221, 70.123 looks on a black background.

Color Contrast Check

Large Text (above 18pt) WCAG AA ✓ Pass

Any Text WCAG AA ✓ Pass

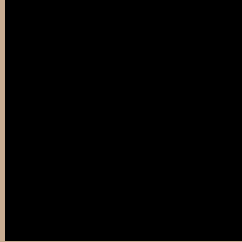
Large Text (above 18pt) WCAG AAA ✓ Pass

Any Text WCAG AAA ✓ Pass

If you want to check with other color combinations, try the [Color Contrast Checker](#).

CIELCh 72, 18.221, 70.123

Background



This preview shows how black text looks on a background with the CIELCh color 72, 18.221, 70.123.



This preview shows how white text looks on a background with the CIELCh color 72, 18.221, 70.123.

Color Blindness Simulation

Color vision deficiency is a very complex topic, and I could not describe the different causes any better than Wikipedia does, so if you want to learn more, you should check out their [article about color blindness](#).

Dichromacy



Original Color

72, 18.221, 70.123

Protanopia

72, 15.678, 93.876

Deuteranopia

72, 19.163, 62.570



Tritanopia
72, 15.719, 354.261

Trichromacy



Original Color
72, 18.221, 70.123

Protanomaly
72, 16.188, 83.681

Deuteranomaly
72, 18.648, 66.249

Tritanomaly
72, 12.871, 22.887

Monochromacy



Original Color
72, 18.221, 70.123

Achromatopsia
72, 0.009, 296.813

Achromatomaly
72, 6.208, 71.256

CSS Examples

Text

The CSS property to change the color of the text to CIELCh 72, 18.221, 70.123 is called "color". The color property can be set on classes, ids or directly on the HTML element.

This example shows how text in the color `rgb(200, 172, 146)` looks like.

```
.text, #text, p{  
    color:rgb(200, 172, 146)  
}
```

If you want to add a text shadow in that color use the text-shadow property, you can generate a text shadow directly with our [CSS Text Shadow Generator](#).

Here you see how black text with a 4 pixel rgb(200, 172, 146) colored shadow looks like.

```
.shadow{ text-shadow: 4px 4px 2px rgb(200, 172, 146) }
```

Border

The CSS property to change the border of an element to CIELCh 72, 18.221, 70.123 is called "border". The border property can be set on classes, ids or directly on the HTML element.

This example shows the color as border, it can be applied via the CSS property "border" or "border-color".

```
.border, #border, table{ border:4px solid rgb(200, 172, 146) }
```

If only the border color should be changed use the property `border-color`.

```
.border{ border-color:rgb(200, 172, 146) }
```

If you want to add a box shadow in that color use:

Here you see how a box with a 4 pixel `rgb(200, 172, 146)` colored shadow looks like.

```
.boxshadow{ -moz-box-shadow:4px 4px 4px  
4px rgb(200, 172, 146); -webkit-box-  
shadow:4px 4px 4px 4px rgb(200, 172, 146);  
box-shadow:4px 4px 4px 4px rgb(200, 172,  
146) }
```

Background

The CSS property to change the background color of an element to CIELCh 72, 18.221, 70.123 is called "background". The background property can be set on classes, ids or directly on the HTML element.

```
.background, #background, body{  
background: rgb(200, 172, 146) }
```

If only the background color should be changed can be used:

```
.background{ background-color: rgb(200,  
172, 146) }
```

This example shows the color as background, it is applied via the CSS property "background".

To optimize and compress your CSS code, you can use our [online CSS compressor and optimizer](#) based on csstidy. If you want to create a linear or radial gradient as background or border, check our [CSS Gradient Generator](#).

Hey! You found this booklet interesting? Support Converting Colors with the new Membership Option!

The pro membership hides all ads, plus gives you double the colors in the color bucket, and more awesome pro features!

[Learn more, Memberships starting at \\$2.50/m!](#)

**Follow me
on Twitter!**

@ConvertingColor