

Converting Colors

CIELCh(72, 18.852, 14.557)

Have a look what the booklet for
CIELCh(72, 18.852, 14.557) contains.

CIELCh(72, 18.472, 14.389)	3
<i>Conversions</i>	4
<i>Details</i>	6
<i>Harmonies</i>	11
<i>Previews</i>	20
<i>Color Blindness Simulation</i>	23
<i>CSS Examples</i>	26

Color

CIELCh(72, 18.472, 14.389)

Conversions

Conversions Part 1

Format	Color
Hex	D4A5A9
RGB	212, 165, 169
RGB Percent	83%, 65%, 66%
CMY	0.1695, 0.3537, 0.3380
CMYK	0.00, 0.22, 0.20, 0.17
HSL	355°, 35%, 74%
HSV	355°, 22%, 83%
XYZ	47.6503, 43.6590, 43.3518
YIQ	179.5090, 26.7280, 11.2080

Conversions

Conversions Part 2

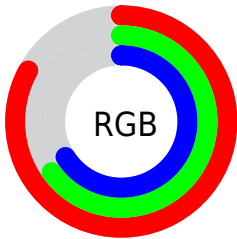
Format	Color
R _Y B	212, 165, 169
Decimal	13936041
CIE Lab	72.00, 17.89, 4.59
CIE LCh	72, 18.472, 14.389
Yxy	43.6590, 0.3539, 0.3242
Android (android.graphics.Color)	4292126121 (0xFFD4A5A9)
YUV	179.5090, -5.1809, 28.4946
Hunter-Lab	66.0750, 13.0949, 7.3523

Details

The CIELCh color $72, 18.472, 14.389$ is a light color, and the websafe version is hex `CC9999`. A complement of this color would be $82, 16.332, 190.751$, and the grayscale version is $73, 0.009, 296.813$.

A 20% lighter version of the original color is $91, 12.977, 11.181$, and $52, 18.594, 14.590$ is the 20% darker color. If you saturate the color by 10%, you get $67, 27.640, 15.699$, and if you desaturate by 10%, it is $78, 9.813, 13.328$.

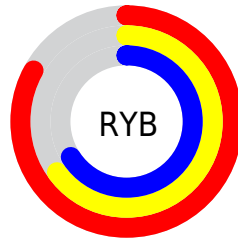
Distribution



Red (83%)

Green (65%)

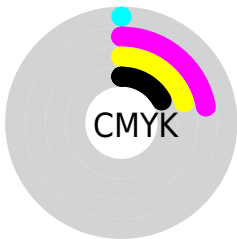
Blue (66%)



Red (83%)

Yellow (65%)

Blue (66%)

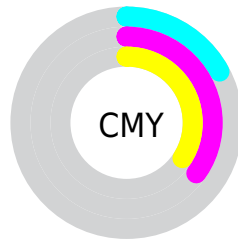


Cyan (0%)

Magenta (22%)

Yellow (20%)

Black (17%)



Cyan (17%)

Magenta (35%)

Yellow (34%)

Brightness & Saturation Gradients

These gradients show how the CIELCh color 72, 18.472, 14.389 changes by changing the brightness by 10 percent. The first figure shows a shift by +10% for each color and the second figure -10%.

Similar to the brightness gradients but the following saturation gradients show a change of the CIELCh color 72, 18.472, 14.389 by changing the saturation by 10% instead.

72, 18.472, 14.389

72, 18.472, 14.389

100, 18.472,
14.389

62, 18.472, 14.389

92, 18.472, 14.389

52, 18.472, 14.389

42, 18.472, 14.389

32, 18.472, 14.389

22, 18.472, 14.389

12, 18.472, 14.389

2, 18.472, 14.389

0, 18.472, 14.389

72, 18.472, 14.389

72, 18.472, 14.389

67, 27.640, 15.699

78, 9.813, 13.328

61, 37.226, 17.338

84, 1.702, 12.206

57, 47.043, 19.426

89, 5.872, 191.928

52, 56.817, 22.091

95, 12.944,
191.282

49, 66.215, 25.444

97, 14.435,
198.543

46, 74.907, 29.482

45, 82.512, 33.902

44, 87.358, 36.954

Harmonies

Complementary

The Complementary color scheme is a pair of colors which are on the opposite of each other on the color wheel.



72, 18.472, 14.389



82, 16.332, 190.751

Rectangle

The Rectangle color scheme consists of four colors that form a rectangle on the color wheel.



72, 18.472, 14.389



72, 18.472, 64.389



72, 18.472, 194.389



72, 18.472, 244.389

Sweetspot

The Sweet Spot groups the original color and five complimentary colors.



72, 18.470, 14.395



95, 6.442, 12.831



73, 29.675, 322.783



50, 4.194, 12.891



0, 0.000, 0.000



53, 0.007, 296.813

Same Dimension

The Same Dimension uses a secret algorithm to generate beautiful new colors.



72, 18.470, 14.395



82, 26.561, 15.025



77, 15.076, 61.631



42, 4.570, 13.060



35, 73.879, 36.328



5, 21.965, 15.974

Inverse Universe

The Inverse Universe completely reimagines the original color for something new.



72, 18.470, 14.395



82, 26.561, 15.025



77, 13.686, 246.738



42, 4.570, 13.060



35, 73.879, 36.328



5, 21.965, 15.974

Previews

White Background



This preview shows how the CIELCh color 72, 18.472, 14.389 looks on a white background.

Color Contrast Check

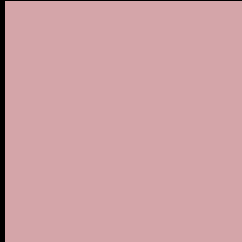
Large Text (above 18pt) WCAG AA × Fail

Any Text WCAG AA × Fail

Large Text (above 18pt) WCAG AAA × Fail

Any Text WCAG AAA × Fail

Black Background



This preview shows how the CIELCh color 72, 18.472, 14.389 looks on a black background.

Color Contrast Check

Large Text (above 18pt) WCAG AA ✓ Pass

Any Text WCAG AA ✓ Pass

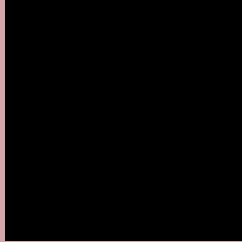
Large Text (above 18pt) WCAG AAA ✓ Pass

Any Text WCAG AAA ✓ Pass

If you want to check with other color combinations, try the [Color Contrast Checker](#).

CIELCh 72, 18.472, 14.389

Background



This preview shows how black text looks on a background with the CIELCh color 72, 18.472, 14.389.

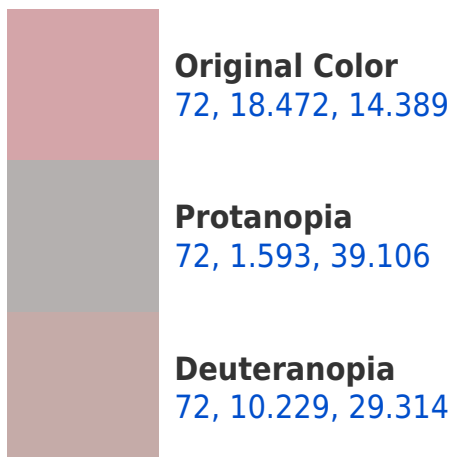



This preview shows how white text looks on a background with the CIELCh color 72, 18.472, 14.389.

Color Blindness Simulation

Color vision deficiency is a very complex topic, and I could not describe the different causes any better than Wikipedia does, so if you want to learn more, you should check out their [article about color blindness](#).

Dichromacy





Tritanopia
72, 19.901, 2.303

Trichromacy



Original Color
72, 18.472, 14.389

Protanomaly
72, 7.672, 15.966

Deuteranomaly
72, 12.871, 22.887

Tritanomaly
72, 19.557, 6.873

Monochromacy



Original Color
72, 18.472, 14.389

Achromatopsia
73, 0.009, 296.813

Achromatomaly
73, 6.497, 15.116

CSS Examples

Text

The CSS property to change the color of the text to CIELCh 72, 18.472, 14.389 is called "color". The color property can be set on classes, ids or directly on the HTML element.

This example shows how text in the color `rgb(212, 165, 169)` looks like.

```
.text, #text, p{  
    color:rgb(212, 165, 169)  
}
```

If you want to add a text shadow in that color use the text-shadow property, you can generate a text shadow directly with our [CSS Text Shadow Generator](#).

Here you see how black text with a 4 pixel rgb(212, 165, 169) colored shadow looks like.

```
.shadow{ text-shadow: 4px 4px 2px rgb(212, 165, 169) }
```

Border

The CSS property to change the border of an element to CIELCh 72, 18.472, 14.389 is called "border". The border property can be set on classes, ids or directly on the HTML element.

This example shows the color as border, it can be applied via the CSS property "border" or "border-color".

```
.border, #border, table{ border:4px solid rgb(212, 165, 169) }
```

If only the border color should be changed use the property `border-color`.

```
.border{ border-color:rgb(212, 165, 169) }
```

If you want to add a box shadow in that color use:

Here you see how a box with a 4 pixel `rgb(212, 165, 169)` colored shadow looks like.

```
.boxshadow{ -moz-box-shadow:4px 4px 4px  
4px rgb(212, 165, 169); -webkit-box-  
shadow:4px 4px 4px 4px rgb(212, 165, 169);  
box-shadow:4px 4px 4px 4px rgb(212, 165,  
169) }
```

Background

The CSS property to change the background color of an element to CIELCh 72, 18.472, 14.389 is called "background". The background property can be set on classes, ids or directly on the HTML element.

```
.background, #background, body{  
background: rgb(212, 165, 169) }
```

If only the background color should be changed can be used:

```
.background{ background-color: rgb(212,  
165, 169) }
```

This example shows the color as background, it is applied via the CSS property "background".

To optimize and compress your CSS code, you can use our [online CSS compressor and optimizer](#) based on csstidy. If you want to create a linear or radial gradient as background or border, check our [CSS Gradient Generator](#).

Hey! You found this booklet interesting? Support Converting Colors with the new Membership Option!

The pro membership hides all ads, plus gives you double the colors in the color bucket, and more awesome pro features!

[Learn more, Memberships starting at \\$2.50/m!](#)

**Follow me
on Twitter!**

@ConvertingColor