

Converting Colors

CIELCh(72, 19.682, 72.388)

Have a look what the booklet for
CIELCh(72, 19.682, 72.388) contains.

CIELCh(72, 19.558, 72.803)	3
<i>Conversions</i>	4
<i>Details</i>	6
<i>Harmonies</i>	11
<i>Previews</i>	20
<i>Color Blindness Simulation</i>	23
<i>CSS Examples</i>	26

Color

CIELCh(72, 19.558, 72.803)

Conversions

Conversions Part 1

Format	Color
Hex	C8AC8F
RGB	200, 172, 143
RGB Percent	78%, 67%, 56%
CMY	0.2165, 0.3262, 0.4400
CMYK	0.00, 0.14, 0.29, 0.22
HSL	31°, 34%, 67%
HSV	31°, 29%, 78%
XYZ	43.4235, 43.6590, 32.0495
YIQ	177.0660, 25.9970, -3.0830

Conversions

Conversions Part 2

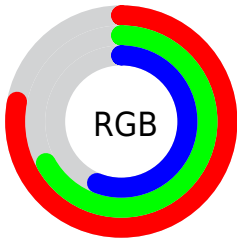
Format	Color
RYB	198, 200, 143
Decimal	13151375
CIELab	72.00, 5.78, 18.68
CIELCh	72, 19.558, 72.803
Yxy	43.6590, 0.3645, 0.3665
Android (android.graphics.Color)	4291341455 (0xFFC8AC8F)
YUV	177.0660, -16.7945, 20.1131
Hunter-Lab	66.0750, 1.6763, 17.4940

Details

The CIELCh color $72, 19.558, 72.803$ is a light color, and the websafe version is hex `CC9966`. A complement of this color would be $69, 18.169, 260.794$, and the grayscale version is $72, 0.009, 296.813$.

A 20% lighter version of the original color is $92, 18.868, 74.364$, and $52, 19.314, 73.042$ is the 20% darker color. If you saturate the color by 10%, you get $69, 27.025, 71.538$, and if you desaturate by 10%, it is $75, 12.413, 74.063$.

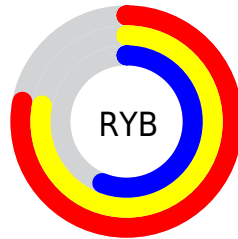
Distribution



Red (78%)

Green (67%)

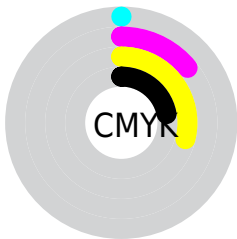
Blue (56%)



Red (78%)

Yellow (78%)

Blue (56%)

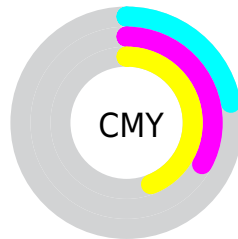


Cyan (0%)

Magenta (14%)

Yellow (29%)

Black (22%)



Cyan (22%)

Magenta (33%)

Yellow (44%)

Brightness & Saturation Gradients

These gradients show how the CIELCh color 72, 19.558, 72.803 changes by changing the brightness by 10 percent. The first figure shows a shift by +10% for each color and the second figure -10%.

Similar to the brightness gradients but the following saturation gradients show a change of the CIELCh color 72, 19.558, 72.803 by changing the saturation by 10% instead.

■ 72, 19.558, 72.803

■ 72, 19.558, 72.803

■ 100, 19.558,
72.803

■ 62, 19.558, 72.803

■ 92, 19.558, 72.803

■ 52, 19.558, 72.803

■ 42, 19.558, 72.803

■ 32, 19.558, 72.803

■ 22, 19.558, 72.803

■ 12, 19.558, 72.803

■ 2, 19.558, 72.803

■ 0, 19.558, 72.803

■ 72, 19.558, 72.803

■ 72, 19.558, 72.803

69, 27.025, 71.538

75, 12.413, 74.063

66, 34.795, 70.250

78, 5.582, 75.272

64, 42.793, 68.932

81, 0.957, 256.931

61, 50.836, 67.543

84, 7.231, 257.789

59, 58.540, 65.981

87, 13.266,
258.912

56, 65.193, 64.031

90, 15.937,
251.719

54, 70.052, 61.467

54, 70.756, 61.109

93, 15.116,
228.543

95, 16.715,
206.749

96, 18.164,
198.304

Harmonies

Complementary

The Complementary color scheme is a pair of colors which are on the opposite of each other on the color wheel.



72, 19.558, 72.803



69, 18.169, 260.794

Rectangle

The Rectangle color scheme consists of four colors that form a rectangle on the color wheel.



72, 19.558, 72.803



72, 19.558, 122.803



72, 19.558, 252.803



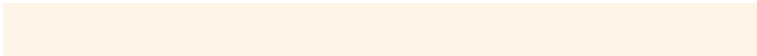
72, 19.558, 302.803

Sweetspot

The Sweet Spot groups the original color and five complimentary colors.



72, 19.558, 72.811



97, 7.197, 75.201



66, 26.702, 346.267



51, 5.018, 75.027



0, 0.000, 0.000



53, 0.007, 296.813

Same Dimension

The Same Dimension uses a secret algorithm to generate beautiful new colors.



72, 19.558, 72.811



88, 28.813, 72.053



79, 29.974, 107.433



40, 3.709, 75.172



44, 60.720, 61.708



7, 12.960, 58.543

Inverse Universe

The Inverse Universe completely reimagines the original color for something new.



69, 18.169, 260.794



83, 26.305, 262.015



61, 32.096, 293.628



40, 3.634, 257.654



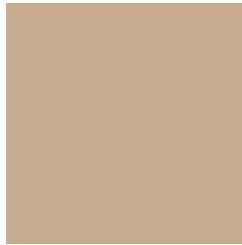
35, 52.153, 284.478



5, 14.163, 271.062

Previews

White Background



This preview shows how the CIELCh color 72, 19.558, 72.803 looks on a white background.

Color Contrast Check

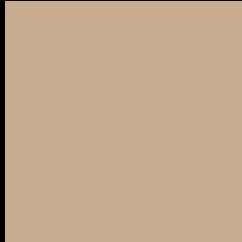
Large Text (above 18pt) WCAG AA × Fail

Any Text WCAG AA × Fail

Large Text (above 18pt) WCAG AAA × Fail

Any Text WCAG AAA × Fail

Black Background



This preview shows how the CIELCh color 72, 19.558, 72.803 looks on a black background.

Color Contrast Check

Large Text (above 18pt) WCAG AA ✓ Pass

Any Text WCAG AA ✓ Pass

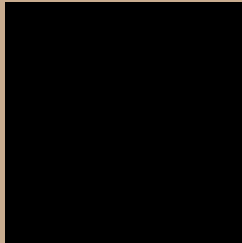
Large Text (above 18pt) WCAG AAA ✓ Pass

Any Text WCAG AAA ✓ Pass

If you want to check with other color combinations, try the [Color Contrast Checker](#).

CIELCh 72, 19.558, 72.803

Background



This preview shows how black text looks on a background with the CIELCh color 72, 19.558, 72.803.



This preview shows how white text looks on a background with the CIELCh color 72, 19.558, 72.803.

Color Blindness Simulation

Color vision deficiency is a very complex topic, and I could not describe the different causes any better than Wikipedia does, so if you want to learn more, you should check out their [article about color blindness](#).

Dichromacy



Original Color

72, 19.558, 72.803

Protanopia

72, 17.354, 93.712

Deuteranopia

72, 20.678, 64.771



Tritanopia
72, 15.719, 354.261

Trichromacy



Original Color
72, 19.558, 72.803

Protanomaly
72, 17.856, 84.427

Deuteranomaly
72, 20.203, 68.231

Tritanomaly
72, 13.025, 27.603

Monochromacy



Original Color
72, 19.558, 72.803

Achromatopsia
72, 0.009, 296.813

Achromatomaly
72, 6.648, 74.064

CSS Examples

Text

The CSS property to change the color of the text to CIELCh 72, 19.558, 72.803 is called "color". The color property can be set on classes, ids or directly on the HTML element.

This example shows how text in the color `rgb(200, 172, 143)` looks like.

```
.text, #text, p{  
    color:rgb(200, 172, 143)  
}
```

If you want to add a text shadow in that color use the text-shadow property, you can generate a text shadow directly with our [CSS Text Shadow Generator](#).

Here you see how black text with a 4 pixel rgb(200, 172, 143) colored shadow looks like.

```
.shadow{ text-shadow: 4px 4px 2px rgb(200, 172, 143) }
```

Border

The CSS property to change the border of an element to CIELCh 72, 19.558, 72.803 is called "border". The border property can be set on classes, ids or directly on the HTML element.

This example shows the color as border, it can be applied via the CSS property "border" or "border-color".

```
.border, #border, table{ border:4px solid rgb(200, 172, 143) }
```

If only the border color should be changed use the property `border-color`.

```
.border{ border-color:rgb(200, 172, 143) }
```

If you want to add a box shadow in that color use:

Here you see how a box with a 4 pixel `rgb(200, 172, 143)` colored shadow looks like.

```
.boxshadow{ -moz-box-shadow:4px 4px 4px  
4px rgb(200, 172, 143); -webkit-box-  
shadow:4px 4px 4px 4px rgb(200, 172, 143);  
box-shadow:4px 4px 4px 4px rgb(200, 172,  
143) }
```

Background

The CSS property to change the background color of an element to CIELCh 72, 19.558, 72.803 is called "background". The background property can be set on classes, ids or directly on the HTML element.

```
.background, #background, body{  
background: rgb(200, 172, 143) }
```

If only the background color should be changed can be used:

```
.background{ background-color: rgb(200,  
172, 143) }
```

This example shows the color as background, it is applied via the CSS property "background".

To optimize and compress your CSS code, you can use our [online CSS compressor and optimizer](#) based on csstidy. If you want to create a linear or radial gradient as background or border, check our [CSS Gradient Generator](#).

Hey! You found this booklet interesting? Support Converting Colors with the new Membership Option!

The pro membership hides all ads, plus gives you double the colors in the color bucket, and more awesome pro features!

[Learn more, Memberships starting at \\$2.50/m!](#)

**Follow me
on Twitter!**

@ConvertingColor