

Converting Colors

CIELCh(72, 21.079, 38.557)

Have a look what the booklet for
CIELCh(72, 21.079, 38.557) contains.

CIELCh(72, 21.387, 38.557)	3
<i>Conversions</i>	4
<i>Details</i>	6
<i>Harmonies</i>	11
<i>Previews</i>	20
<i>Color Blindness Simulation</i>	23
<i>CSS Examples</i>	26

Color

CIELCh(72, 21.387, 38.557)

Conversions

Conversions Part 1

Format	Color
Hex	D7A599
RGB	215, 165, 153
RGB Percent	84%, 65%, 60%
CMY	0.1568, 0.3529, 0.4000
CMYK	0.00, 0.23, 0.29, 0.16
HSL	12°, 44%, 72%
HSV	12°, 29%, 84%
XYZ	47.2311, 43.6590, 36.0761
YIQ	178.5820, 33.6520, 6.8680

Conversions

Conversions Part 2

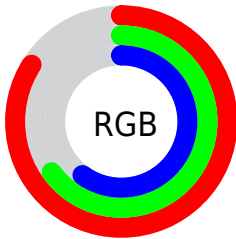
Format	Color
R _Y B	215, 168, 153
Decimal	14132633
CIE Lab	72.00, 16.72, 13.33
CIE LCh	72, 21.387, 38.557
Yxy	43.6590, 0.3720, 0.3439
Android (android.graphics.Color)	4292322713 (0xFFD7A599)
YUV	178.5820, -12.6119, 31.9386
Hunter-Lab	66.0750, 11.9625, 13.8809

Details

The CIELCh color **72, 21.387, 38.557** is a light color, and the websafe version is hex **CC9999**. A complement of this color would be **79, 17.518, 219.948**, and the grayscale version is **73, 0.009, 296.813**.

A 20% lighter version of the original color is **90, 14.840, 46.988**, and **52, 21.355, 38.629** is the 20% darker color. If you saturate the color by 10%, you get **67, 30.030, 38.801**, and if you desaturate by 10%, it is **77, 13.397, 38.487**.

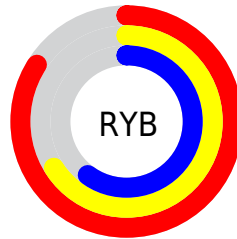
Distribution



Red (84%)

Green (65%)

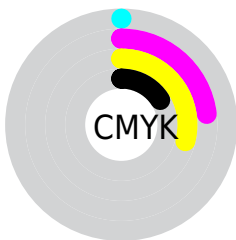
Blue (60%)



Red (84%)

Yellow (66%)

Blue (60%)

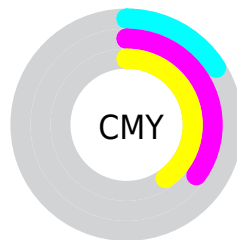


Cyan (0%)

Magenta (23%)

Yellow (29%)

Black (16%)



Cyan (16%)

Magenta (35%)

Yellow (40%)

Brightness & Saturation Gradients

These gradients show how the CIELCh color 72, 21.387, 38.557 changes by changing the brightness by 10 percent. The first figure shows a shift by +10% for each color and the second figure -10%.

Similar to the brightness gradients but the following saturation gradients show a change of the CIELCh color 72, 21.387, 38.557 by changing the saturation by 10% instead.

72, 21.387, 38.557

72, 21.387, 38.557

100, 21.387,
38.557

62, 21.387, 38.557

92, 21.387, 38.557

52, 21.387, 38.557

42, 21.387, 38.557

32, 21.387, 38.557

22, 21.387, 38.557

12, 21.387, 38.557

2, 21.387, 38.557

0, 21.387, 38.557

72, 21.387, 38.557

72, 21.387, 38.557

67, 30.030, 38.801

77, 13.397, 38.487

63, 39.329, 39.241

82, 6.030, 38.503

59, 49.224, 39.919

87, 0.765, 219.518

55, 59.553, 40.835

92, 7.045, 219.088

52, 69.939, 41.898

96, 12.373,
206.584

49, 79.541, 42.786

97, 13.411,
198.611

47, 86.957, 42.999

47, 87.763, 43.073

Harmonies

Complementary

The Complementary color scheme is a pair of colors which are on the opposite of each other on the color wheel.



72, 21.387, 38.557



79, 17.518, 219.948

Rectangle

The Rectangle color scheme consists of four colors that form a rectangle on the color wheel.



72, 21.387, 38.557



72, 21.387, 88.557



72, 21.387, 218.557



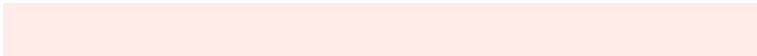
72, 21.387, 268.557

Sweetspot

The Sweet Spot groups the original color and five complimentary colors.



72, 21.386, 38.564



95, 7.060, 38.503



71, 35.399, 331.768



50, 4.936, 38.500



0, 0.000, 0.000



53, 0.007, 296.813

Same Dimension

The Same Dimension uses a secret algorithm to generate beautiful new colors.



72, 21.386, 38.564



81, 30.633, 38.697



80, 23.838, 88.757



42, 3.870, 38.503



37, 73.563, 43.448



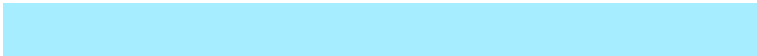
6, 19.487, 30.340

Inverse Universe

The Inverse Universe completely reimagines the original color for something new.



79, 17.518, 219.948



90, 23.809, 220.432



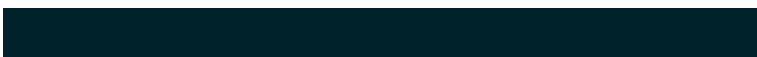
70, 23.825, 276.812



44, 3.649, 219.073



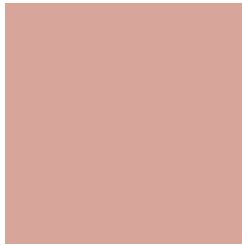
53, 32.438, 233.930



12, 12.651, 226.260

Previews

White Background



This preview shows how the CIELCh color 72, 21.387, 38.557 looks on a white background.

Color Contrast Check

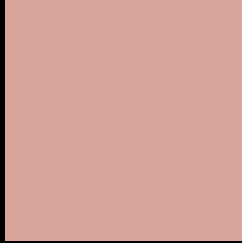
Large Text (above 18pt) WCAG AA × Fail

Any Text WCAG AA × Fail

Large Text (above 18pt) WCAG AAA × Fail

Any Text WCAG AAA × Fail

Black Background



This preview shows how the CIELCh color 72, 21.387, 38.557 looks on a black background.

Color Contrast Check

Large Text (above 18pt) WCAG AA ✓ Pass

Any Text WCAG AA ✓ Pass

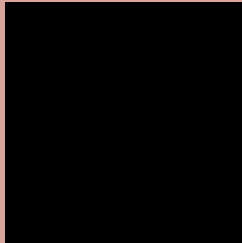
Large Text (above 18pt) WCAG AAA ✓ Pass

Any Text WCAG AAA ✓ Pass

If you want to check with other color combinations, try the [Color Contrast Checker](#).

CIELCh 72, 21.387, 38.557

Background



This preview shows how black text looks on a background with the CIELCh color 72, 21.387, 38.557.

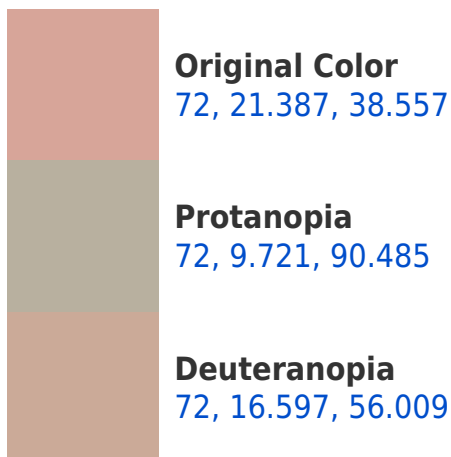


This preview shows how white text looks on a background with the CIELCh color 72, 21.387, 38.557.

Color Blindness Simulation

Color vision deficiency is a very complex topic, and I could not describe the different causes any better than Wikipedia does, so if you want to learn more, you should check out their [article about color blindness](#).

Dichromacy





Tritanopia
72, 22.188, 4.587

Trichromacy



Original Color
72, 21.387, 38.557

Protanomaly
72, 12.260, 61.298

Deuteranomaly
72, 18.108, 48.928

Tritanomaly
72, 20.916, 16.897

Monochromacy



Original Color
72, 21.387, 38.557

Achromatopsia
73, 0.009, 296.813

Achromatomaly
72, 7.259, 37.212

CSS Examples

Text

The CSS property to change the color of the text to CIELCh 72, 21.387, 38.557 is called "color". The color property can be set on classes, ids or directly on the HTML element.

This example shows how text in the color `rgb(215, 165, 153)` looks like.

```
.text, #text, p{  
    color:rgb(215, 165, 153)  
}
```

If you want to add a text shadow in that color use the text-shadow property, you can generate a text shadow directly with our [CSS Text Shadow Generator](#).

Here you see how black text with a 4 pixel rgb(215, 165, 153) colored shadow looks like.

```
.shadow{ text-shadow: 4px 4px 2px rgb(215, 165, 153) }
```

Border

The CSS property to change the border of an element to CIELCh 72, 21.387, 38.557 is called "border". The border property can be set on classes, ids or directly on the HTML element.

This example shows the color as border, it can be applied via the CSS property "border" or "border-color".

```
.border, #border, table{ border:4px solid rgb(215, 165, 153) }
```

If only the border color should be changed use the property `border-color`.

```
.border{ border-color:rgb(215, 165, 153) }
```

If you want to add a box shadow in that color use:

Here you see how a box with a 4 pixel `rgb(215, 165, 153)` colored shadow looks like.

```
.boxshadow{ -moz-box-shadow:4px 4px 4px  
4px rgb(215, 165, 153); -webkit-box-  
shadow:4px 4px 4px 4px rgb(215, 165, 153);  
box-shadow:4px 4px 4px 4px rgb(215, 165,  
153) }
```

Background

The CSS property to change the background color of an element to CIELCh 72, 21.387, 38.557 is called "background". The background property can be set on classes, ids or directly on the HTML element.

```
.background, #background, body{  
background: rgb(215, 165, 153) }
```

If only the background color should be changed can be used:

```
.background{ background-color: rgb(215,  
165, 153) }
```

This example shows the color as background, it is applied via the CSS property "background".

To optimize and compress your CSS code, you can use our [online CSS compressor and optimizer](#) based on csstidy. If you want to create a linear or radial gradient as background or border, check our [CSS Gradient Generator](#).

Hey! You found this booklet interesting? Support Converting Colors with the new Membership Option!

The pro membership hides all ads, plus gives you double the colors in the color bucket, and more awesome pro features!

[Learn more, Memberships starting at \\$2.50/m!](#)

**Follow me
on Twitter!**

@ConvertingColor