

Converting Colors

CIELCh(72, 21.462, 46.175)

Have a look what the booklet for
CIELCh(72, 21.462, 46.175) contains.

CIELCh(72, 21.436, 46.043)	3
<i>Conversions</i>	4
<i>Details</i>	6
<i>Harmonies</i>	11
<i>Previews</i>	20
<i>Color Blindness Simulation</i>	23
<i>CSS Examples</i>	26

Color

CIELCh(72, 21.436, 46.043)

Conversions

Conversions Part 1

Format	Color
Hex	D5A695
RGB	213, 166, 149
RGB Percent	84%, 65%, 58%
CMY	0.1642, 0.3485, 0.4152
CMYK	0.00, 0.22, 0.30, 0.16
HSL	16°, 43%, 71%
HSV	16°, 30%, 84%
XYZ	46.5740, 43.6590, 34.4582
YIQ	178.1150, 33.4690, 4.6770

Conversions

Conversions Part 2

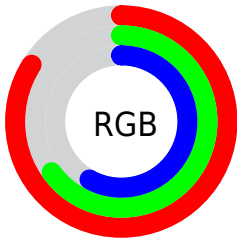
Format	Color
R _Y B	213, 172, 149
Decimal	14001813
CIE Lab	72.00, 14.88, 15.43
CIE LCh	72, 21.436, 46.043
Yxy	43.6590, 0.3735, 0.3501
Android (android.graphics.Color)	4292191893 (0xFFD5A695)
YUV	178.1150, -14.3537, 30.5941
Hunter-Lab	66.0750, 10.1873, 15.3327

Details

The CIELCh color **72, 21.436, 46.043** is a light color, and the websafe version is hex **CC9999**. A complement of this color would be **77, 17.676, 229.793**, and the grayscale version is **73, 0.009, 296.813**.

A 20% lighter version of the original color is **90, 15.958, 55.569**, and **52, 21.443, 46.466** is the 20% darker color. If you saturate the color by 10%, you get **68, 29.752, 45.847**, and if you desaturate by 10%, it is **76, 13.734, 46.367**.

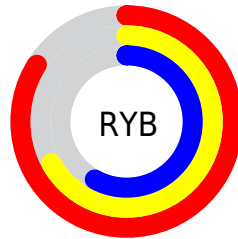
Distribution



Red (84%)

Green (65%)

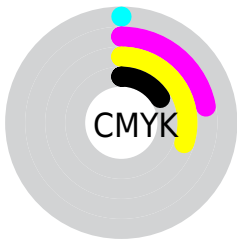
Blue (58%)



Red (84%)

Yellow (67%)

Blue (58%)

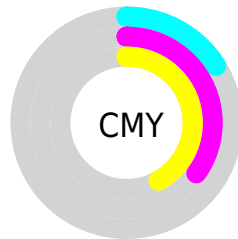


Cyan (0%)

Magenta (22%)

Yellow (30%)

Black (16%)



Cyan (16%)

Magenta (35%)

Yellow (42%)

Brightness & Saturation Gradients

These gradients show how the CIELCh color 72, 21.436, 46.043 changes by changing the brightness by 10 percent. The first figure shows a shift by +10% for each color and the second figure -10%.

Similar to the brightness gradients but the following saturation gradients show a change of the CIELCh color 72, 21.436, 46.043 by changing the saturation by 10% instead.

72, 21.436, 46.043

72, 21.436, 46.043

100, 21.436,
46.043

62, 21.436, 46.043

92, 21.436, 46.043

52, 21.436, 46.043

42, 21.436, 46.043

32, 21.436, 46.043

22, 21.436, 46.043

12, 21.436, 46.043

2, 21.436, 46.043

0, 21.436, 46.043

72, 21.436, 46.043

72, 21.436, 46.043

68, 29.752, 45.847

76, 13.734, 46.367

64, 38.693, 45.787

81, 6.611, 46.751

60, 48.210, 45.883

85, 0.020, 18.066

56, 58.145, 46.110

90, 6.103, 227.965

53, 68.107, 46.350

94, 11.653,
226.901

51, 77.215, 46.271

97, 14.006,
198.571

48, 84.364, 45.598

Harmonies

Complementary

The Complementary color scheme is a pair of colors which are on the opposite of each other on the color wheel.



72, 21.436, 46.043



77, 17.676, 229.793

Rectangle

The Rectangle color scheme consists of four colors that form a rectangle on the color wheel.



72, 21.436, 46.043



72, 21.436, 96.043



72, 21.436, 226.043



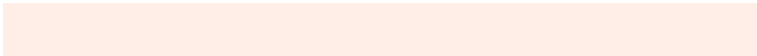
72, 21.436, 276.043

Sweetspot

The Sweet Spot groups the original color and five complimentary colors.



72, 21.435, 46.050



95, 6.834, 46.786



69, 34.949, 334.382



50, 4.776, 46.730



0, 0.000, 0.000



53, 0.007, 296.813

Same Dimension

The Same Dimension uses a secret algorithm to generate beautiful new colors.



72, 21.435, 46.050



82, 30.491, 45.906



80, 26.205, 93.568



43, 3.746, 46.774



39, 71.146, 46.062



7, 18.699, 35.116

Inverse Universe

The Inverse Universe completely reimagines the original color for something new.



77, 17.676, 229.793



88, 23.974, 230.598



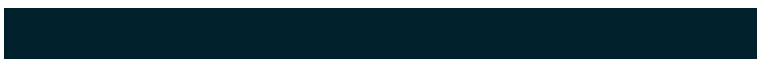
68, 26.770, 281.638



44, 3.549, 227.983



49, 34.464, 249.146



11, 12.886, 239.036

Previews

White Background



This preview shows how the CIELCh color 72, 21.436, 46.043 looks on a white background.

Color Contrast Check

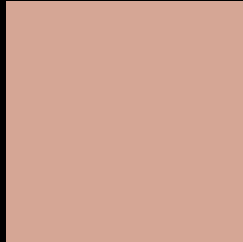
Large Text (above 18pt) WCAG AA × Fail

Any Text WCAG AA × Fail

Large Text (above 18pt) WCAG AAA × Fail

Any Text WCAG AAA × Fail

Black Background



This preview shows how the CIELCh color 72, 21.436, 46.043 looks on a black background.

Color Contrast Check

Large Text (above 18pt) WCAG AA ✓ Pass

Any Text WCAG AA ✓ Pass

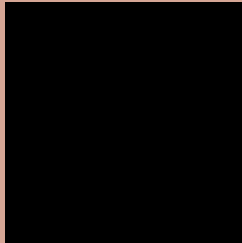
Large Text (above 18pt) WCAG AAA ✓ Pass

Any Text WCAG AAA ✓ Pass

If you want to check with other color combinations, try the [Color Contrast Checker](#).

CIELCh 72, 21.436, 46.043

Background



This preview shows how black text looks on a background with the CIELCh color 72, 21.436, 46.043.

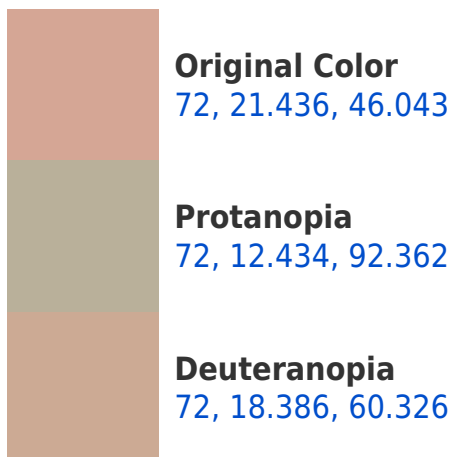


This preview shows how white text looks on a background with the CIELCh color 72, 21.436, 46.043.

Color Blindness Simulation

Color vision deficiency is a very complex topic, and I could not describe the different causes any better than Wikipedia does, so if you want to learn more, you should check out their [article about color blindness](#).

Dichromacy





Tritanopia
72, 21.933, 2.870

Trichromacy



Original Color
72, 21.436, 46.043

Protanomaly
72, 14.287, 68.949

Deuteranomaly
72, 19.363, 56.085

Tritanomaly
72, 20.101, 18.157

Monochromacy



Original Color
72, 21.436, 46.043

Achromatopsia
73, 0.009, 296.813

Achromatomaly
72, 7.325, 46.114

CSS Examples

Text

The CSS property to change the color of the text to CIELCh 72, 21.436, 46.043 is called "color". The color property can be set on classes, ids or directly on the HTML element.

This example shows how text in the color `rgb(213, 166, 149)` looks like.

```
.text, #text, p{  
    color:rgb(213, 166, 149)  
}
```

If you want to add a text shadow in that color use the text-shadow property, you can generate a text shadow directly with our [CSS Text Shadow Generator](#).

Here you see how black text with a 4 pixel rgb(213, 166, 149) colored shadow looks like.

```
.shadow{ text-shadow: 4px 4px 2px rgb(213, 166, 149) }
```

Border

The CSS property to change the border of an element to CIELCh 72, 21.436, 46.043 is called "border". The border property can be set on classes, ids or directly on the HTML element.

This example shows the color as border, it can be applied via the CSS property "border" or "border-color".

```
.border, #border, table{ border:4px solid rgb(213, 166, 149) }
```

If only the border color should be changed use the property `border-color`.

```
.border{ border-color:rgb(213, 166, 149) }
```

If you want to add a box shadow in that color use:

Here you see how a box with a 4 pixel `rgb(213, 166, 149)` colored shadow looks like.

```
.boxshadow{ -moz-box-shadow:4px 4px 4px  
4px rgb(213, 166, 149); -webkit-box-  
shadow:4px 4px 4px 4px rgb(213, 166, 149);  
box-shadow:4px 4px 4px 4px rgb(213, 166,  
149) }
```

Background

The CSS property to change the background color of an element to CIELCh 72, 21.436, 46.043 is called "background". The background property can be set on classes, ids or directly on the HTML element.

```
.background, #background, body{  
background: rgb(213, 166, 149) }
```

If only the background color should be changed can be used:

```
.background{ background-color: rgb(213,  
166, 149) }
```

This example shows the color as background, it is applied via the CSS property "background".

To optimize and compress your CSS code, you can use our [online CSS compressor and optimizer](#) based on csstidy. If you want to create a linear or radial gradient as background or border, check our [CSS Gradient Generator](#).

Hey! You found this booklet interesting? Support Converting Colors with the new Membership Option!

The pro membership hides all ads, plus gives you double the colors in the color bucket, and more awesome pro features!

[Learn more, Memberships starting at \\$2.50/m!](#)

**Follow me
on Twitter!**

@ConvertingColor