

Converting Colors

CIELCh(72, 22.291, 38.704)

Have a look what the booklet for
CIELCh(72, 22.291, 38.704) contains.

CIELCh(72, 22.006, 39.531)	3
<i>Conversions</i>	4
<i>Details</i>	6
<i>Harmonies</i>	11
<i>Previews</i>	20
<i>Color Blindness Simulation</i>	23
<i>CSS Examples</i>	26

Color

CIELCh(72, 22.006, 39.531)

Conversions

Conversions Part 1

Format	Color
Hex	D8A598
RGB	216, 165, 152
RGB Percent	85%, 65%, 60%
CMY	0.1538, 0.3537, 0.4047
CMYK	0.00, 0.24, 0.30, 0.15
HSL	12°, 45%, 72%
HSV	12°, 30%, 85%
XYZ	47.3200, 43.6590, 35.5498
YIQ	178.7670, 34.5690, 6.7690

Conversions

Conversions Part 2

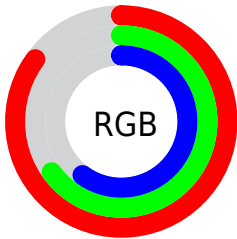
Format	Color
RYB	216, 168, 152
Decimal	14198168
CIELab	72.00, 16.97, 14.01
CIELCh	72, 22.006, 39.531
Yxy	43.6590, 0.3740, 0.3451
Android (android.graphics.Color)	4292388248 (0xFFD8A598)
YUV	178.7670, -13.1961, 32.6533
Hunter-Lab	66.0750, 12.2028, 14.3532

Details

The CIELCh color **72, 22.006, 39.531** is a light color, and the websafe version is hex **CC9999**. A complement of this color would be **79, 17.935, 221.268**, and the grayscale version is **73, 0.009, 296.813**.

A 20% lighter version of the original color is **90, 15.106, 48.668**, and **52, 22.036, 39.659** is the 20% darker color. If you saturate the color by 10%, you get **67, 30.678, 39.728**, and if you desaturate by 10%, it is **77, 13.987, 39.504**.

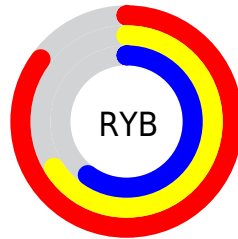
Distribution



Red (85%)

Green (65%)

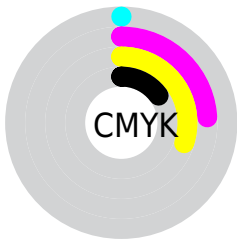
Blue (60%)



Red (85%)

Yellow (66%)

Blue (60%)

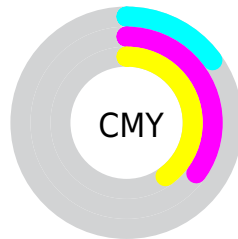


Cyan (0%)

Magenta (24%)

Yellow (30%)

Black (15%)



Cyan (15%)

Magenta (35%)

Yellow (40%)


Brightness & Saturation Gradients

These gradients show how the CIELCh color 72, 22.006, 39.531 changes by changing the brightness by 10 percent. The first figure shows a shift by +10% for each color and the second figure -10%.

Similar to the brightness gradients but the following saturation gradients show a change of the CIELCh color 72, 22.006, 39.531 by changing the saturation by 10% instead.

 72, 22.006, 39.531

 72, 22.006, 39.531

 100, 22.006,
39.531

 62, 22.006, 39.531

 92, 22.006, 39.531

 52, 22.006, 39.531

 42, 22.006, 39.531

 32, 22.006, 39.531

 22, 22.006, 39.531

 12, 22.006, 39.531

 2, 22.006, 39.531

 0, 22.006, 39.531

 72, 22.006, 39.531

 72, 22.006, 39.531

67, 30.678, 39.728

77, 13.987, 39.504

63, 40.005, 40.117

82, 6.591, 39.567

59, 49.925, 40.733

86, 0.231, 222.345

55, 60.266, 41.570

91, 6.537, 220.225

52, 70.628, 42.522

96, 11.881,
209.310

50, 80.113, 43.245

97, 13.164,
198.627

47, 87.419, 43.331

47, 87.662, 43.351

Harmonies

Complementary

The Complementary color scheme is a pair of colors which are on the opposite of each other on the color wheel.



72, 22.006, 39.531



79, 17.935, 221.268

Rectangle

The Rectangle color scheme consists of four colors that form a rectangle on the color wheel.



72, 22.006, 39.531



72, 22.006, 89.531



72, 22.006, 219.531



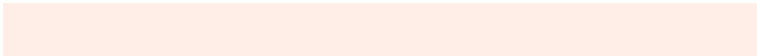
72, 22.006, 269.531

Sweetspot

The Sweet Spot groups the original color and five complimentary colors.



72, 22.005, 39.538



95, 7.022, 39.571



70, 36.079, 332.432



50, 4.909, 39.561



0, 0.000, 0.000



53, 0.007, 296.813

Same Dimension

The Same Dimension uses a secret algorithm to generate beautiful new colors.



72, 22.005, 39.538



80, 31.459, 39.645



80, 24.964, 89.948



42, 3.849, 39.569



38, 73.267, 43.746



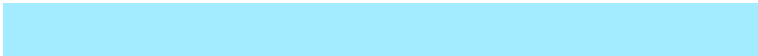
6, 19.378, 30.938

Inverse Universe

The Inverse Universe completely reimagines the original color for something new.



79, 17.935, 221.268



89, 24.292, 221.828



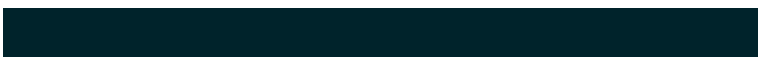
70, 25.096, 278.187



44, 3.631, 220.225



52, 32.579, 236.009



12, 12.648, 227.954

Previews

White Background



This preview shows how the CIELCh color 72, 22.006, 39.531 looks on a white background.

Color Contrast Check

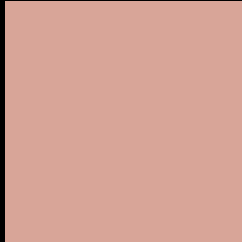
Large Text (above 18pt) WCAG AA × Fail

Any Text WCAG AA × Fail

Large Text (above 18pt) WCAG AAA × Fail

Any Text WCAG AAA × Fail

Black Background



This preview shows how the CIELCh color 72, 22.006, 39.531 looks on a black background.

Color Contrast Check

Large Text (above 18pt) WCAG AA ✓ Pass

Any Text WCAG AA ✓ Pass

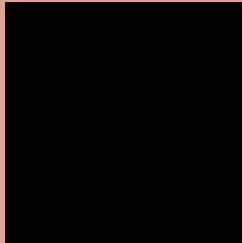
Large Text (above 18pt) WCAG AAA ✓ Pass

Any Text WCAG AAA ✓ Pass

If you want to check with other color combinations, try the [Color Contrast Checker](#).

CIELCh 72, 22.006, 39.531

Background



This preview shows how black text looks on a background with the CIELCh color 72, 22.006, 39.531.



This preview shows how white text looks on a background with the CIELCh color 72, 22.006, 39.531.

Color Blindness Simulation

Color vision deficiency is a very complex topic, and I could not describe the different causes any better than Wikipedia does, so if you want to learn more, you should check out their [article about color blindness](#).

Dichromacy



Original Color

72, 22.006, 39.531

Protanopia

72, 10.238, 91.375

Deuteranopia

72, 16.951, 57.385



Tritanopia
72, 22.565, 4.924

Trichromacy



Original Color
72, 22.006, 39.531

Protanomaly
72, 12.945, 61.814

Deuteranomaly
72, 18.774, 49.703

Tritanomaly
72, 21.319, 17.021

Monochromacy



Original Color
72, 22.006, 39.531

Achromatopsia
73, 0.009, 296.813

Achromatomaly
72, 7.452, 41.134

CSS Examples

Text

The CSS property to change the color of the text to CIELCh 72, 22.006, 39.531 is called "color". The color property can be set on classes, ids or directly on the HTML element.

This example shows how text in the color `rgb(216, 165, 152)` looks like.

```
.text, #text, p{  
    color:rgb(216, 165, 152)  
}
```

If you want to add a text shadow in that color use the text-shadow property, you can generate a text shadow directly with our [CSS Text Shadow Generator](#).

Here you see how black text with a 4 pixel rgb(216, 165, 152) colored shadow looks like.

```
.shadow{ text-shadow: 4px 4px 2px rgb(216, 165, 152) }
```

Border

The CSS property to change the border of an element to CIELCh 72, 22.006, 39.531 is called "border". The border property can be set on classes, ids or directly on the HTML element.

This example shows the color as border, it can be applied via the CSS property "border" or "border-color".

```
.border, #border, table{ border:4px solid rgb(216, 165, 152) }
```

If only the border color should be changed use the property border-color.

```
.border{ border-color:rgb(216, 165, 152) }
```

If you want to add a box shadow in that color use:

Here you see how a box with a 4 pixel rgb(216, 165, 152) colored shadow looks like.

```
.boxshadow{ -moz-box-shadow:4px 4px 4px  
4px rgb(216, 165, 152); -webkit-box-  
shadow:4px 4px 4px 4px rgb(216, 165, 152);  
box-shadow:4px 4px 4px 4px rgb(216, 165,  
152) }
```

Background

The CSS property to change the background color of an element to CIELCh 72, 22.006, 39.531 is called "background". The background property can be set on classes, ids or directly on the HTML element.

```
.background, #background, body{  
background: rgb(216, 165, 152) }
```

If only the background color should be changed can be used:

```
.background{ background-color: rgb(216,  
165, 152) }
```

This example shows the color as background, it is applied via the CSS property "background".

To optimize and compress your CSS code, you can use our [online CSS compressor and optimizer](#) based on csstidy. If you want to create a linear or radial gradient as background or border, check our [CSS Gradient Generator](#).

Hey! You found this booklet interesting? Support Converting Colors with the new Membership Option!

The pro membership hides all ads, plus gives you double the colors in the color bucket, and more awesome pro features!

[Learn more, Memberships starting at \\$2.50/m!](#)

**Follow me
on Twitter!**

@ConvertingColor