

Converting Colors

CIELCh(72, 22.652, 61.930)

Have a look what the booklet for
CIELCh(72, 22.652, 61.930) contains.

CIELCh(72, 22.652, 61.930)	3
<i>Conversions</i>	4
<i>Details</i>	6
<i>Harmonies</i>	11
<i>Previews</i>	20
<i>Color Blindness Simulation</i>	23
<i>CSS Examples</i>	26

Color

CIELCh(72, 22.652, 61.930)

Conversions

Conversions Part 1

Format	Color
Hex	D1A98D
RGB	209, 169, 141
RGB Percent	82%, 66%, 55%
CMY	0.1819, 0.3386, 0.4484
CMYK	0.00, 0.19, 0.33, 0.18
HSL	25°, 42%, 68%
HSV	25°, 33%, 82%
XYZ	45.0941, 43.6590, 31.1164
YIQ	177.7680, 32.8280, -0.2280

Conversions

Conversions Part 2

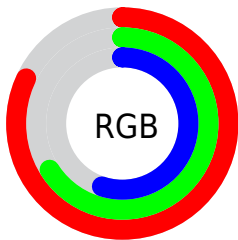
Format	Color
R _Y B	209, 189, 141
Decimal	13740429
CIE Lab	72.00, 10.66, 19.99
CIE LCh	72, 22.652, 61.930
Yxy	43.6590, 0.3762, 0.3642
Android (android.graphics.Color)	4291930509 (0xFFD1A98D)
YUV	177.7680, -18.1266, 27.3905
Hunter-Lab	66.0750, 6.1894, 18.3313

Details

The CIELCh color **72, 22.652, 61.930** is a light color, and the websafe version is hex **CC9966**. A complement of this color would be **72, 19.649, 250.059**, and the grayscale version is **72, 0.009, 296.813**.

A 20% lighter version of the original color is **91, 19.204, 70.700**, and **52, 22.395, 62.045** is the 20% darker color. If you saturate the color by 10%, you get **69, 30.555, 60.960**, and if you desaturate by 10%, it is **76, 15.213, 62.942**.

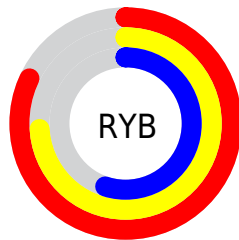
Distribution



Red (82%)

Green (66%)

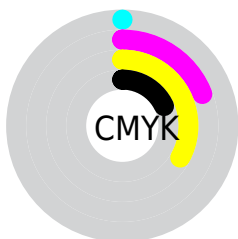
Blue (55%)



Red (82%)

Yellow (74%)

Blue (55%)

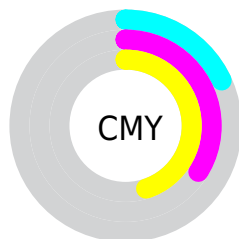


Cyan (0%)

Magenta (19%)

Yellow (33%)

Black (18%)



Cyan (18%)

Magenta (34%)

Yellow (45%)

Brightness & Saturation Gradients

These gradients show how the CIELCh color 72, 22.652, 61.930 changes by changing the brightness by 10 percent. The first figure shows a shift by +10% for each color and the second figure -10%.

Similar to the brightness gradients but the following saturation gradients show a change of the CIELCh color 72, 22.652, 61.930 by changing the saturation by 10% instead.

72, 22.652, 61.930

72, 22.652, 61.930

100, 22.652,
61.930

62, 22.652, 61.930

92, 22.652, 61.930

52, 22.652, 61.930

42, 22.652, 61.930

32, 22.652, 61.930

22, 22.652, 61.930

12, 22.652, 61.930

2, 22.652, 61.930

0, 22.652, 61.930

72, 22.652, 61.930

72, 22.652, 61.930

69, 30.555, 60.960

76, 15.213, 62.942

65, 38.909, 60.015

79, 8.218, 63.954

62, 47.635, 59.087

83, 1.631, 64.780

59, 56.515, 58.113

86, 4.588, 246.199

56, 65.059, 56.936

90, 10.480,
247.178

54, 72.327, 55.223

94, 12.798,
229.777

52, 76.638, 53.610

97, 15.274,
199.369

97, 15.430,
198.479

Harmonies

Complementary

The Complementary color scheme is a pair of colors which are on the opposite of each other on the color wheel.



72, 22.652, 61.930



72, 19.649, 250.059

Rectangle

The Rectangle color scheme consists of four colors that form a rectangle on the color wheel.



72, 22.652, 61.930



72, 22.652, 111.930



72, 22.652, 241.930



72, 22.652, 291.930

Sweetspot

The Sweet Spot groups the original color and five complimentary colors.



72, 22.652, 61.937



96, 7.631, 64.198



66, 33.659, 341.342



50, 5.229, 64.058



0, 0.000, 0.000



53, 0.007, 296.813

Same Dimension

The Same Dimension uses a secret algorithm to generate beautiful new colors.



72, 22.652, 61.937



84, 32.614, 61.262



81, 32.195, 102.343



42, 3.678, 64.266



42, 65.009, 54.211



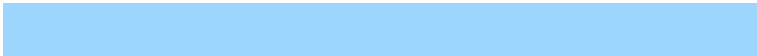
8, 15.987, 47.994

Inverse Universe

The Inverse Universe completely reimagines the original color for something new.



72, 19.649, 250.059



83, 27.326, 251.491



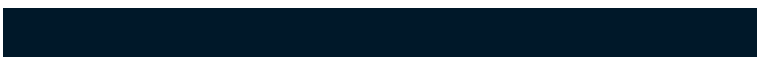
63, 34.276, 290.180



42, 3.550, 246.473



41, 43.960, 273.577



7, 14.366, 262.085

Previews

White Background



This preview shows how the CIELCh color 72, 22.652, 61.930 looks on a white background.

Color Contrast Check

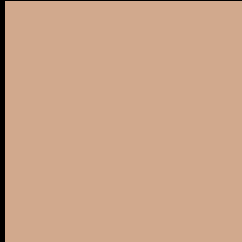
Large Text (above 18pt) WCAG AA × Fail

Any Text WCAG AA × Fail

Large Text (above 18pt) WCAG AAA × Fail

Any Text WCAG AAA × Fail

Black Background



This preview shows how the CIELCh color 72, 22.652, 61.930 looks on a black background.

Color Contrast Check

Large Text (above 18pt) WCAG AA ✓ Pass

Any Text WCAG AA ✓ Pass

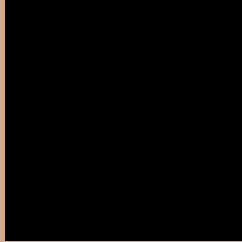
Large Text (above 18pt) WCAG AAA ✓ Pass

Any Text WCAG AAA ✓ Pass

If you want to check with other color combinations, try the [Color Contrast Checker](#).

CIELCh 72, 22.652, 61.930

Background



This preview shows how black text looks on a background with the CIELCh color 72, 22.652, 61.930.



This preview shows how white text looks on a background with the CIELCh color 72, 22.652, 61.930.

Color Blindness Simulation

Color vision deficiency is a very complex topic, and I could not describe the different causes any better than Wikipedia does, so if you want to learn more, you should check out their [article about color blindness](#).

Dichromacy



Original Color

72, 22.652, 61.930

Protanopia

72, 17.878, 94.074

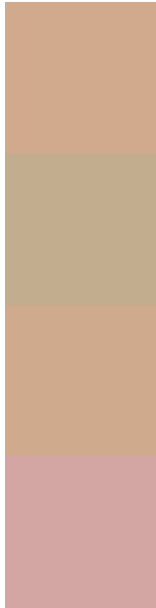
Deuteranopia

72, 22.224, 66.637



Tritanopia
72, 19.531, 1.883

Trichromacy



Original Color
72, 22.652, 61.930

Protanomaly
72, 18.632, 79.812

Deuteranomaly
72, 22.517, 65.868

Tritanomaly
72, 17.906, 26.100

Monochromacy



Original Color
72, 22.652, 61.930

Achromatopsia
72, 0.009, 296.813

Achromatomaly
72, 7.962, 62.513

CSS Examples

Text

The CSS property to change the color of the text to CIELCh 72, 22.652, 61.930 is called "color". The color property can be set on classes, ids or directly on the HTML element.

This example shows how text in the color `rgb(209, 169, 141)` looks like.

```
.text, #text, p{  
    color:rgb(209, 169, 141)  
}
```

If you want to add a text shadow in that color use the text-shadow property, you can generate a text shadow directly with our [CSS Text Shadow Generator](#).

Here you see how black text with a 4 pixel rgb(209, 169, 141) colored shadow looks like.

```
.shadow{ text-shadow: 4px 4px 2px rgb(209, 169, 141) }
```

Border

The CSS property to change the border of an element to CIELCh 72, 22.652, 61.930 is called "border". The border property can be set on classes, ids or directly on the HTML element.

This example shows the color as border, it can be applied via the CSS property "border" or "border-color".

```
.border, #border, table{ border:4px solid rgb(209, 169, 141) }
```

If only the border color should be changed use the property `border-color`.

```
.border{ border-color:rgb(209, 169, 141) }
```

If you want to add a box shadow in that color use:

Here you see how a box with a 4 pixel `rgb(209, 169, 141)` colored shadow looks like.

```
.boxshadow{ -moz-box-shadow:4px 4px 4px  
4px rgb(209, 169, 141); -webkit-box-  
shadow:4px 4px 4px 4px rgb(209, 169, 141);  
box-shadow:4px 4px 4px 4px rgb(209, 169,  
141) }
```

Background

The CSS property to change the background color of an element to CIELCh 72, 22.652, 61.930 is called "background". The background property can be set on classes, ids or directly on the HTML element.

```
.background, #background, body{  
background: rgb(209, 169, 141) }
```

If only the background color should be changed can be used:

```
.background{ background-color: rgb(209,  
169, 141) }
```

This example shows the color as background, it is applied via the CSS property "background".

To optimize and compress your CSS code, you can use our [online CSS compressor and optimizer](#) based on csstidy. If you want to create a linear or radial gradient as background or border, check our [CSS Gradient Generator](#).

Hey! You found this booklet interesting? Support Converting Colors with the new Membership Option!

The pro membership hides all ads, plus gives you double the colors in the color bucket, and more awesome pro features!

[Learn more, Memberships starting at \\$2.50/m!](#)

**Follow me
on Twitter!**

@ConvertingColor