

Converting Colors

CIELCh(72, 23.457, 0.112)

Have a look what the booklet for
CIELCh(72, 23.457, 0.112) contains.

CIELCh(72, 23.481, 0.127)	3
<i>Conversions</i>	4
<i>Details</i>	6
<i>Harmonies</i>	11
<i>Previews</i>	20
<i>Color Blindness Simulation</i>	23
<i>CSS Examples</i>	26

Color

CIELCh(72, 23.481, 0.127)

Conversions

Conversions Part 1

Format	Color
Hex	DAA1B1
RGB	218, 161, 177
RGB Percent	85%, 63%, 69%
CMY	0.1444, 0.3680, 0.3052
CMYK	0.00, 0.26, 0.19, 0.14
HSL	343°, 44%, 74%
HSV	343°, 26%, 86%
XYZ	49.6900, 43.6590, 47.4884
YIQ	179.8670, 28.8360, 17.0600

Conversions

Conversions Part 2

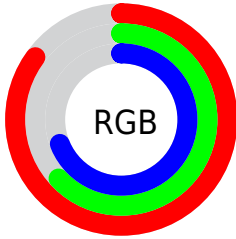
Format	Color
R _Y B	218, 161, 177
Decimal	14328241
CIE Lab	72.00, 23.48, 0.05
CIE LCh	72, 23.481, 0.127
Yxy	43.6590, 0.3528, 0.3100
Android (android.graphics.Color)	4292518321 (0xFFDAA1B1)
YUV	179.8670, -1.4134, 33.4426
Hunter-Lab	66.0750, 18.6050, 3.6405

Details

The CIELCh color $72, 23.481, 0.127$ is a light color, and the websafe version is hex `CC9999`. A complement of this color would be $83, 21.621, 174.792$, and the grayscale version is $73, 0.009, 296.813$.

A 20% lighter version of the original color is $90, 16.600, 348.639$, and $52, 23.455, 359.442$ is the 20% darker color. If you saturate the color by 10%, you get $67, 32.928, 1.587$, and if you desaturate by 10%, it is $78, 14.224, 358.898$.

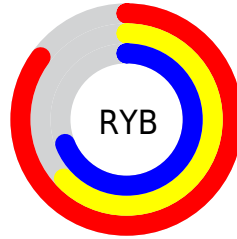
Distribution



Red (85%)

Green (63%)

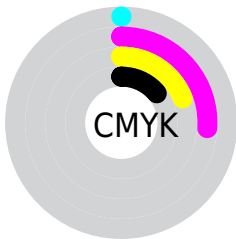
Blue (69%)



Red (85%)

Yellow (63%)

Blue (69%)

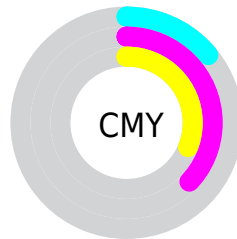


Cyan (0%)

Magenta (26%)

Yellow (19%)

Black (14%)



Cyan (14%)

Magenta (37%)

Yellow (31%)

Brightness & Saturation Gradients

These gradients show how the CIELCh color 72, 23.481, 0.127 changes by changing the brightness by 10 percent. The first figure shows a shift by +10% for each color and the second figure -10%.

Similar to the brightness gradients but the following saturation gradients show a change of the CIELCh color 72, 23.481, 0.127 by changing the saturation by 10% instead.

 72, 23.481, 0.127  72, 23.481, 0.127

 100, 23.481, 0.127  62, 23.481, 0.127

 92, 23.481, 0.127  52, 23.481, 0.127

 42, 23.481, 0.127

 32, 23.481, 0.127

 22, 23.481, 0.127

 12, 23.481, 0.127

 2, 23.481, 0.127

 0, 23.481, 0.127

 72, 23.481, 0.127

 72, 23.481, 0.127

67, 32.928, 1.587

78, 14.224,
358.898

62, 42.357, 3.351

83, 5.292, 357.793

57, 51.447, 5.537

89, 3.258, 177.140

53, 59.793, 8.291

95, 11.405,
176.225

50, 66.993, 11.784

48, 72.809, 16.161

97, 12.394,
198.678

46, 77.354, 21.429

46, 79.038, 23.527

Harmonies

Complementary

The Complementary color scheme is a pair of colors which are on the opposite of each other on the color wheel.



72, 23.481, 0.127



83, 21.621, 174.792

Rectangle

The Rectangle color scheme consists of four colors that form a rectangle on the color wheel.



72, 23.481, 0.127



72, 23.481, 50.127



72, 23.481, 180.127



72, 23.481, 230.127

Sweetspot

The Sweet Spot groups the original color and five complimentary colors.



72, 23.479, 0.130



95, 7.872, 358.007



72, 34.265, 317.377



50, 5.613, 358.172



0, 0.000, 0.000



53, 0.007, 296.813

Same Dimension

The Same Dimension uses a secret algorithm to generate beautiful new colors.



72, 23.479, 0.130



80, 31.867, 0.847



75, 19.135, 40.910



43, 4.957, 358.156



36, 66.197, 22.548



5, 23.853, 7.934

Inverse Universe

The Inverse Universe completely reimagines the original color for something new.



72, 23.479, 0.130



80, 31.867, 0.847



80, 16.058, 222.789



43, 4.957, 358.156



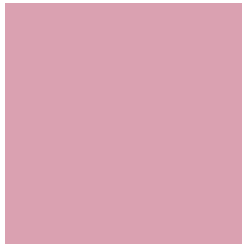
36, 66.197, 22.548



5, 23.853, 7.934

Previews

White Background



This preview shows how the CIELCh color 72, 23.481, 0.127 looks on a white background.

Color Contrast Check

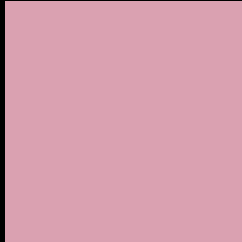
Large Text (above 18pt) WCAG AA × Fail

Any Text WCAG AA × Fail

Large Text (above 18pt) WCAG AAA × Fail

Any Text WCAG AAA × Fail

Black Background



This preview shows how the CIE LCh color 72, 23.481, 0.127 looks on a black background.

Color Contrast Check

Large Text (above 18pt) WCAG AA ✓ Pass

Any Text WCAG AA ✓ Pass

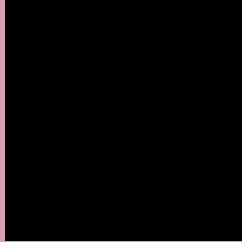
Large Text (above 18pt) WCAG AAA ✓ Pass

Any Text WCAG AAA ✓ Pass

If you want to check with other color combinations, try the [Color Contrast Checker](#).

CIELCh 72, 23.481, 0.127

Background



This preview shows how black text looks on a background with the CIELCh color 72, 23.481, 0.127.

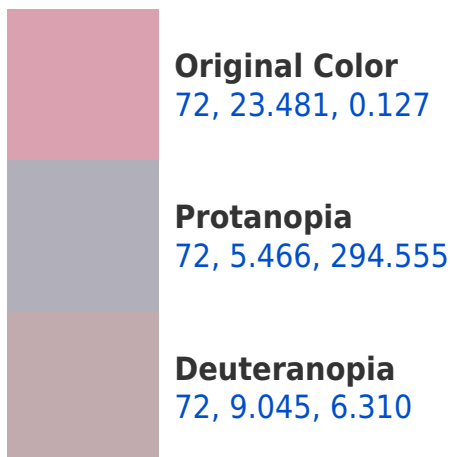


This preview shows how white text looks on a background with the CIELCh color 72, 23.481, 0.127.

Color Blindness Simulation

Color vision deficiency is a very complex topic, and I could not describe the different causes any better than Wikipedia does, so if you want to learn more, you should check out their [article about color blindness](#).

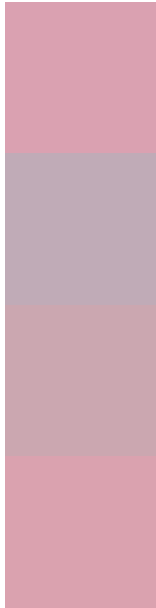
Dichromacy





Tritanopia
72, 22.565, 4.924

Trichromacy



Original Color
72, 23.481, 0.127

Protanomaly
72, 10.252, 340.809

Deuteranomaly
72, 14.615, 1.277

Tritanomaly
72, 22.679, 3.597

Monochromacy



Original Color
72, 23.481, 0.127

Achromatopsia
73, 0.009, 296.813

Achromatomaly
73, 8.601, 357.939

CSS Examples

Text

The CSS property to change the color of the text to CIELCh 72, 23.481, 0.127 is called "color". The color property can be set on classes, ids or directly on the HTML element.

This example shows how text in the color `rgb(218, 161, 177)` looks like.

```
.text, #text, p{  
    color:rgb(218, 161, 177)  
}
```

If you want to add a text shadow in that color use the text-shadow property, you can generate a text shadow directly with our [CSS Text Shadow Generator](#).

Here you see how black text with a 4 pixel rgb(218, 161, 177) colored shadow looks like.

```
.shadow{ text-shadow: 4px 4px 2px rgb(218, 161, 177) }
```

Border

The CSS property to change the border of an element to CIELCh 72, 23.481, 0.127 is called "border". The border property can be set on classes, ids or directly on the HTML element.

This example shows the color as border, it can be applied via the CSS property "border" or "border-color".

```
.border, #border, table{ border:4px solid rgb(218, 161, 177) }
```

If only the border color should be changed use the property border-color.

```
.border{ border-color:rgb(218, 161, 177) }
```

If you want to add a box shadow in that color use:

Here you see how a box with a 4 pixel rgb(218, 161, 177) colored shadow looks like.

```
.boxshadow{ -moz-box-shadow:4px 4px 4px  
4px rgb(218, 161, 177); -webkit-box-  
shadow:4px 4px 4px 4px rgb(218, 161, 177);  
box-shadow:4px 4px 4px 4px rgb(218, 161,  
177) }
```

Background

The CSS property to change the background color of an element to CIELCh 72, 23.481, 0.127 is called "background". The background property can be set on classes, ids or directly on the HTML element.

```
.background, #background, body{  
background: rgb(218, 161, 177) }
```

If only the background color should be changed can be used:

```
.background{ background-color: rgb(218,  
161, 177) }
```

This example shows the color as background, it is applied via the CSS property "background".

To optimize and compress your CSS code, you can use our [online CSS compressor and optimizer](#) based on csstidy. If you want to create a linear or radial gradient as background or border, check our [CSS Gradient Generator](#).

Hey! You found this booklet interesting? Support Converting Colors with the new Membership Option!

The pro membership hides all ads, plus gives you double the colors in the color bucket, and more awesome pro features!

[Learn more, Memberships starting at \\$2.50/m!](#)

**Follow me
on Twitter!**

@ConvertingColor