

Converting Colors

CIELCh(72, 24.681, 46.657)

Have a look what the booklet for
CIELCh(72, 24.681, 46.657) contains.

CIELCh(72, 24.611, 46.837)	3
<i>Conversions</i>	4
<i>Details</i>	6
<i>Harmonies</i>	11
<i>Previews</i>	20
<i>Color Blindness Simulation</i>	23
<i>CSS Examples</i>	26

Color

CIELCh(72, 24.611, 46.837)

Conversions

Conversions Part 1

Format	Color
Hex	DAA591
RGB	218, 165, 145
RGB Percent	85%, 65%, 57%
CMY	0.1466, 0.3543, 0.4327
CMYK	0.00, 0.24, 0.34, 0.15
HSL	16°, 49%, 71%
HSV	16°, 34%, 85%
XYZ	47.2710, 43.6590, 32.5816
YIQ	178.5670, 38.0080, 5.0160

Conversions

Conversions Part 2

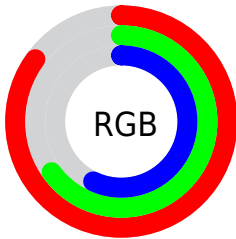
Format	Color
RYB	218, 173, 145
Decimal	14329233
CIELab	72.00, 16.84, 17.95
CIElCh	72, 24.611, 46.837
Yxy	43.6590, 0.3827, 0.3535
Android (android.graphics.Color)	4292519313 (0xFFDAA591)
YUV	178.5670, -16.5485, 34.5827
Hunter-Lab	66.0750, 12.0703, 17.0166

Details

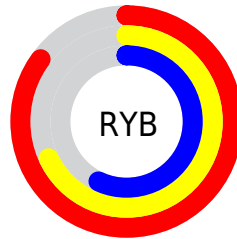
The CIELCh color **72, 24.611, 46.837** is a light color, and the websafe version is hex **CC9999**. A complement of this color would be **77, 19.825, 231.399**, and the grayscale version is **73, 0.009, 296.813**.

A 20% lighter version of the original color is **90, 17.295, 58.768**, and **52, 24.930, 47.215** is the 20% darker color. If you saturate the color by 10%, you get **68, 33.258, 46.634**, and if you desaturate by 10%, it is **76, 16.590, 47.173**.

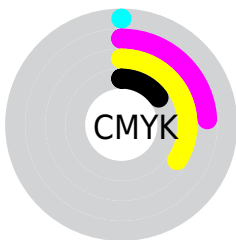
Distribution



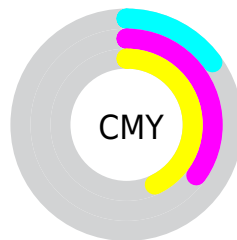
- Red (85%)
- Green (65%)
- Blue (57%)



- Red (85%)
- Yellow (68%)
- Blue (57%)



- Cyan (0%)
- Magenta (24%)
- Yellow (34%)
- Black (15%)



- Cyan (15%)
- Magenta (35%)
- Yellow (43%)


Brightness & Saturation Gradients

These gradients show how the CIELCh color 72, 24.611, 46.837 changes by changing the brightness by 10 percent. The first figure shows a shift by +10% for each color and the second figure -10%.

Similar to the brightness gradients but the following saturation gradients show a change of the CIELCh color 72, 24.611, 46.837 by changing the saturation by 10% instead.

 72, 24.611, 46.837

 72, 24.611, 46.837

 100, 24.611,
46.837

 62, 24.611, 46.837

 92, 24.611, 46.837

 52, 24.611, 46.837

 42, 24.611, 46.837

 32, 24.611, 46.837

 22, 24.611, 46.837

 12, 24.611, 46.837

 2, 24.611, 46.837

 0, 24.611, 46.837

 72, 24.611, 46.837

 72, 24.611, 46.837

68, 33.258, 46.634

76, 16.590, 47.173

64, 42.528, 46.566

81, 9.169, 47.586

60, 52.340, 46.644

85, 2.299, 47.920

57, 62.470, 46.814

90, 4.075, 228.863

54, 72.378, 46.900

95, 10.007,
229.385

51, 80.913, 46.459

97, 12.574,
198.666

50, 85.369, 45.908

Harmonies

Complementary

The Complementary color scheme is a pair of colors which are on the opposite of each other on the color wheel.



72, 24.611, 46.837



77, 19.825, 231.399

Rectangle

The Rectangle color scheme consists of four colors that form a rectangle on the color wheel.



72, 24.611, 46.837



72, 24.611, 96.837



72, 24.611, 226.837



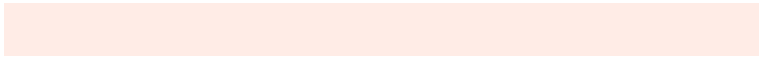
72, 24.611, 276.837

Sweetspot

The Sweet Spot groups the original color and five complimentary colors.



72, 24.610, 46.844



95, 7.605, 47.734



69, 39.176, 335.329



50, 5.217, 47.673



0, 0.000, 0.000



53, 0.007, 296.813

Same Dimension

The Same Dimension uses a secret algorithm to generate beautiful new colors.



72, 24.610, 46.844



80, 34.320, 46.686



81, 30.247, 94.269



44, 3.810, 47.761



40, 71.655, 46.387



8, 20.012, 36.541

Inverse Universe

The Inverse Universe completely reimagines the original color for something new.



77, 19.825, 231.399



86, 26.242, 232.397



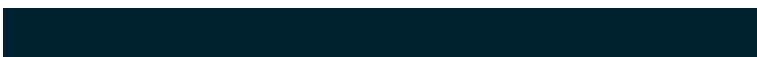
67, 31.175, 283.340



45, 3.613, 229.044



49, 35.237, 250.870



11, 13.443, 241.155

Previews

White Background



This preview shows how the CIELCh color 72, 24.611, 46.837 looks on a white background.

Color Contrast Check

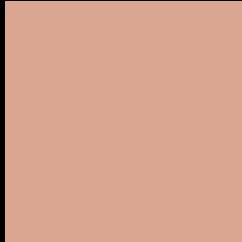
Large Text (above 18pt) WCAG AA × Fail

Any Text WCAG AA × Fail

Large Text (above 18pt) WCAG AAA × Fail

Any Text WCAG AAA × Fail

Black Background



This preview shows how the CIELCh color 72, 24.611, 46.837 looks on a black background.

Color Contrast Check

Large Text (above 18pt) WCAG AA ✓ Pass

Any Text WCAG AA ✓ Pass

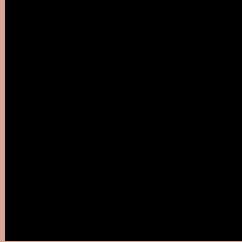
Large Text (above 18pt) WCAG AAA ✓ Pass

Any Text WCAG AAA ✓ Pass

If you want to check with other color combinations, try the [Color Contrast Checker](#).

CIELCh 72, 24.611, 46.837

Background



This preview shows how black text looks on a background with the CIELCh color 72, 24.611, 46.837.



This preview shows how white text looks on a background with the CIELCh color 72, 24.611, 46.837.

Color Blindness Simulation

Color vision deficiency is a very complex topic, and I could not describe the different causes any better than Wikipedia does, so if you want to learn more, you should check out their [article about color blindness](#).

Dichromacy



Original Color

72, 24.611, 46.837

Protanopia

72, 14.632, 92.961

Deuteranopia

72, 20.270, 63.808



Tritanopia
72, 24.108, 6.198

Trichromacy



Original Color
72, 24.611, 46.837

Protanomaly
72, 16.556, 71.269

Deuteranomaly
72, 21.824, 56.716

Tritanomaly
72, 23.025, 20.166

Monochromacy



Original Color
72, 24.611, 46.837

Achromatopsia
73, 0.009, 296.813

Achromatomaly
72, 8.299, 47.029

CSS Examples

Text

The CSS property to change the color of the text to CIELCh 72, 24.611, 46.837 is called "color". The color property can be set on classes, ids or directly on the HTML element.

This example shows how text in the color `rgb(218, 165, 145)` looks like.

```
.text, #text, p{  
    color:rgb(218, 165, 145)  
}
```

If you want to add a text shadow in that color use the text-shadow property, you can generate a text shadow directly with our [CSS Text Shadow Generator](#).

Here you see how black text with a 4 pixel rgb(218, 165, 145) colored shadow looks like.

```
.shadow{ text-shadow: 4px 4px 2px rgb(218, 165, 145) }
```

Border

The CSS property to change the border of an element to CIELCh 72, 24.611, 46.837 is called "border". The border property can be set on classes, ids or directly on the HTML element.

This example shows the color as border, it can be applied via the CSS property "border" or "border-color".

```
.border, #border, table{ border:4px solid rgb(218, 165, 145) }
```

If only the border color should be changed use the property `border-color`.

```
.border{ border-color:rgb(218, 165, 145) }
```

If you want to add a box shadow in that color use:

Here you see how a box with a 4 pixel `rgb(218, 165, 145)` colored shadow looks like.

```
.boxshadow{ -moz-box-shadow:4px 4px 4px  
4px rgb(218, 165, 145); -webkit-box-  
shadow:4px 4px 4px 4px rgb(218, 165, 145);  
box-shadow:4px 4px 4px 4px rgb(218, 165,  
145) }
```

Background

The CSS property to change the background color of an element to CIELCh 72, 24.611, 46.837 is called "background". The background property can be set on classes, ids or directly on the HTML element.

```
.background, #background, body{  
background: rgb(218, 165, 145) }
```

If only the background color should be changed can be used:

```
.background{ background-color: rgb(218,  
165, 145) }
```

This example shows the color as background, it is applied via the CSS property "background".

To optimize and compress your CSS code, you can use our [online CSS compressor and optimizer](#) based on csstidy. If you want to create a linear or radial gradient as background or border, check our [CSS Gradient Generator](#).

Hey! You found this booklet interesting? Support Converting Colors with the new Membership Option!

The pro membership hides all ads, plus gives you double the colors in the color bucket, and more awesome pro features!

[Learn more, Memberships starting at \\$2.50/m!](#)

**Follow me
on Twitter!**

@ConvertingColor