

Converting Colors

CIELCh(72, 25.390, 51.776)

Have a look what the booklet for
CIELCh(72, 25.390, 51.776) contains.

CIELCh(72, 25.477, 51.241)	3
<i>Conversions</i>	4
<i>Details</i>	6
<i>Harmonies</i>	11
<i>Previews</i>	20
<i>Color Blindness Simulation</i>	23
<i>CSS Examples</i>	26

Color

CIELCh(72, 25.477, 51.241)

Conversions

Conversions Part 1

Format	Color
Hex	D9A58D
RGB	217, 165, 141
RGB Percent	85%, 65%, 55%
CMY	0.1485, 0.3524, 0.4465
CMYK	0.00, 0.24, 0.35, 0.15
HSL	19°, 50%, 70%
HSV	19°, 35%, 85%
XYZ	46.9545, 43.6590, 31.2022
YIQ	177.8120, 38.6960, 3.5600

Conversions

Conversions Part 2

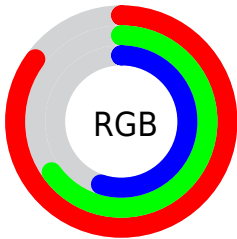
Format	Color
RYB	217, 176, 141
Decimal	14263693
CIELab	72.00, 15.95, 19.87
CIElCh	72, 25.477, 51.241
Yxy	43.6590, 0.3855, 0.3584
Android (android.graphics.Color)	4292453773 (0xFFD9A58D)
YUV	177.8120, -18.1483, 34.3679
Hunter-Lab	66.0750, 11.2153, 18.2543

Details

The CIELCh color **72, 25.477, 51.241** is a light color, and the websafe version is hex **CC9999**. A complement of this color would be **75, 20.669, 237.507**, and the grayscale version is **73, 0.009, 296.813**.

A 20% lighter version of the original color is **90, 18.749, 63.360**, and **52, 25.545, 50.732** is the 20% darker color. If you saturate the color by 10%, you get **68, 34.032, 50.790**, and if you desaturate by 10%, it is **76, 17.515, 51.798**.

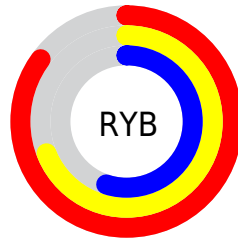
Distribution



Red (85%)

Green (65%)

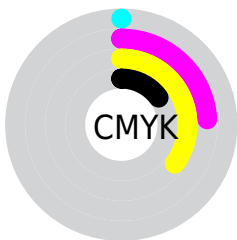
Blue (55%)



Red (85%)

Yellow (69%)

Blue (55%)

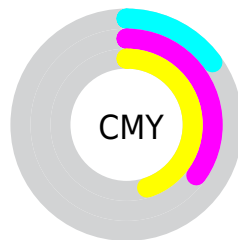


Cyan (0%)

Magenta (24%)

Yellow (35%)

Black (15%)



Cyan (15%)

Magenta (35%)

Yellow (45%)


Brightness & Saturation Gradients

These gradients show how the CIELCh color 72, 25.477, 51.241 changes by changing the brightness by 10 percent. The first figure shows a shift by +10% for each color and the second figure -10%.

Similar to the brightness gradients but the following saturation gradients show a change of the CIELCh color 72, 25.477, 51.241 by changing the saturation by 10% instead.

 72, 25.477, 51.241

 72, 25.477, 51.241

 100, 25.477,
51.241

 62, 25.477, 51.241

 92, 25.477, 51.241

 52, 25.477, 51.241

 42, 25.477, 51.241

 32, 25.477, 51.241

 22, 25.477, 51.241

 12, 25.477, 51.241

 2, 25.477, 51.241

 0, 25.477, 51.241

 72, 25.477, 51.241

 72, 25.477, 51.241

68, 34.032, 50.790

76, 17.515, 51.798

64, 43.168, 50.439

80, 10.122, 52.414

61, 52.793, 50.183

85, 3.253, 53.000

57, 62.649, 49.951

89, 3.144, 234.065

54, 72.133, 49.538

93, 9.120, 234.713

52, 80.036, 48.485

97, 12.477,
200.382

51, 83.361, 47.845

97, 12.725,
198.656

Harmonies

Complementary

The Complementary color scheme is a pair of colors which are on the opposite of each other on the color wheel.



72, 25.477, 51.241



75, 20.669, 237.507

Rectangle

The Rectangle color scheme consists of four colors that form a rectangle on the color wheel.



72, 25.477, 51.241



72, 25.477, 101.241



72, 25.477, 231.241



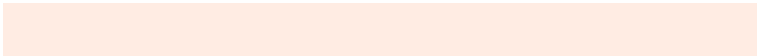
72, 25.477, 281.241

Sweetspot

The Sweet Spot groups the original color and five complimentary colors.



72, 25.476, 51.248



95, 8.332, 52.661



68, 39.884, 336.868



50, 5.627, 52.575



0, 0.000, 0.000



53, 0.007, 296.813

Same Dimension

The Same Dimension uses a secret algorithm to generate beautiful new colors.



72, 25.476, 51.248



80, 35.822, 50.900



81, 32.511, 96.283



44, 3.781, 52.763



41, 70.085, 48.371



8, 19.502, 40.161

Inverse Universe

The Inverse Universe completely reimagines the original color for something new.



75, 20.669, 237.507



85, 27.583, 238.830



65, 33.928, 285.576



44, 3.601, 234.384



47, 37.544, 258.752



11, 13.927, 248.357

Previews

White Background



This preview shows how the CIELCh color 72, 25.477, 51.241 looks on a white background.

Color Contrast Check

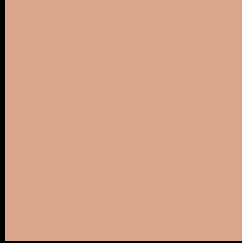
Large Text (above 18pt) WCAG AA × Fail

Any Text WCAG AA × Fail

Large Text (above 18pt) WCAG AAA × Fail

Any Text WCAG AAA × Fail

Black Background



This preview shows how the CIELCh color 72, 25.477, 51.241 looks on a black background.

Color Contrast Check

Large Text (above 18pt) WCAG AA ✓ Pass

Any Text WCAG AA ✓ Pass

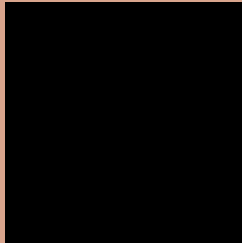
Large Text (above 18pt) WCAG AAA ✓ Pass

Any Text WCAG AAA ✓ Pass

If you want to check with other color combinations, try the [Color Contrast Checker](#).

CIELCh 72, 25.477, 51.241

Background



This preview shows how black text looks on a background with the CIELCh color 72, 25.477, 51.241.



This preview shows how white text looks on a background with the CIELCh color 72, 25.477, 51.241.

Color Blindness Simulation

Color vision deficiency is a very complex topic, and I could not describe the different causes any better than Wikipedia does, so if you want to learn more, you should check out their [article about color blindness](#).

Dichromacy



Original Color

72, 25.477, 51.241

Protanopia

72, 16.831, 93.324

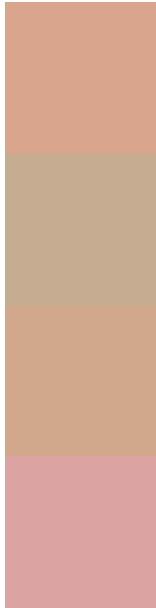
Deuteranopia

72, 22.224, 66.637



Tritanopia
72, 23.728, 5.897

Trichromacy



Original Color
72, 25.477, 51.241

Protanomaly
72, 18.609, 73.964

Deuteranomaly
72, 23.325, 60.562

Tritanomaly
72, 22.375, 24.133

Monochromacy



Original Color
72, 25.477, 51.241

Achromatopsia
73, 0.009, 296.813

Achromatomaly
72, 8.576, 50.174

CSS Examples

Text

The CSS property to change the color of the text to CIELCh 72, 25.477, 51.241 is called "color". The color property can be set on classes, ids or directly on the HTML element.

This example shows how text in the color `rgb(217, 165, 141)` looks like.

```
.text, #text, p{  
    color:rgb(217, 165, 141)  
}
```

If you want to add a text shadow in that color use the text-shadow property, you can generate a text shadow directly with our [CSS Text Shadow Generator](#).

Here you see how black text with a 4 pixel rgb(217, 165, 141) colored shadow looks like.

```
.shadow{ text-shadow: 4px 4px 2px rgb(217, 165, 141) }
```

Border

The CSS property to change the border of an element to CIELCh 72, 25.477, 51.241 is called "border". The border property can be set on classes, ids or directly on the HTML element.

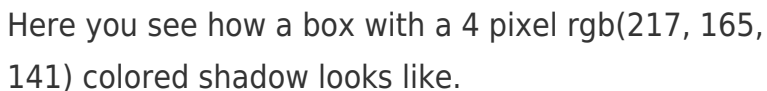
This example shows the color as border, it can be applied via the CSS property "border" or "border-color".

```
.border, #border, table{ border:4px solid rgb(217, 165, 141) }
```

If only the border color should be changed use the property `border-color`.

```
.border{ border-color:rgb(217, 165, 141) }
```

If you want to add a box shadow in that color use:



Here you see how a box with a 4 pixel `rgb(217, 165, 141)` colored shadow looks like.

```
.boxshadow{ -moz-box-shadow:4px 4px 4px 4px rgb(217, 165, 141); -webkit-box-shadow:4px 4px 4px 4px rgb(217, 165, 141); box-shadow:4px 4px 4px 4px rgb(217, 165, 141) }
```

Background

The CSS property to change the background color of an element to CIELCh 72, 25.477, 51.241 is called "background". The background property can be set on classes, ids or directly on the HTML element.

```
.background, #background, body{  
background: rgb(217, 165, 141) }
```

If only the background color should be changed can be used:

```
.background{ background-color: rgb(217,  
165, 141) }
```

This example shows the color as background, it is applied via the CSS property "background".

To optimize and compress your CSS code, you can use our [online CSS compressor and optimizer](#) based on csstidy. If you want to create a linear or radial gradient as background or border, check our [CSS Gradient Generator](#).

Hey! You found this booklet interesting? Support Converting Colors with the new Membership Option!

The pro membership hides all ads, plus gives you double the colors in the color bucket, and more awesome pro features!

[Learn more, Memberships starting at \\$2.50/m!](#)

**Follow me
on Twitter!**

@ConvertingColor