

Converting Colors

CIELCh(72, 25.575, 53.415)

Have a look what the booklet for
CIELCh(72, 25.575, 53.415) contains.

| | |
|--|----|
| CIELCh(72, 25.390, 54.077) | 3 |
| <i>Conversions</i> | 4 |
| <i>Details</i> | 6 |
| <i>Harmonies</i> | 11 |
| <i>Previews</i> | 20 |
| <i>Color Blindness Simulation</i> | 23 |
| <i>CSS Examples</i> | 26 |

Color

CIELCh(72, 25.390, 54.077)

Conversions

Conversions Part 1

| Format | Color |
|-------------|---------------------------|
| Hex | D8A68C |
| RGB | 216, 166, 140 |
| RGB Percent | 85%, 65%, 55% |
| CMY | 0.1537, 0.3497, 0.4517 |
| CMYK | 0.00, 0.23, 0.35, 0.15 |
| HSL | 21°, 49%, 70% |
| HSV | 21°, 35%, 85% |
| XYZ | 46.5801, 43.6590, 30.7118 |
| YIQ | 177.9860, 38.1460, 2.5140 |

Conversions

Conversions Part 2

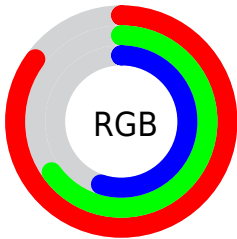
| Format | Color |
|-------------------------------------|--------------------------------|
| R _Y B | 216, 180, 140 |
| Decimal | 14198412 |
| CIE Lab | 72.00, 14.90, 20.56 |
| CIE LCh | 72, 25.390, 54.077 |
| Yxy | 43.6590, 0.3851, 0.3610 |
| Android (android.graphics.Color) | 4292388492 (0xFFD8A68C) |
| YUV | 177.9860, -18.7271, 33.3383 |
| Hunter-Lab | 66.0750, 10.2037, 18.6943 |

Details

The CIELCh color **72, 25.390, 54.077** is a light color, and the websafe version is hex **CC9999**. A complement of this color would be **74, 20.852, 241.224**, and the grayscale version is **73, 0.009, 296.813**.

A 20% lighter version of the original color is **90, 19.225, 66.217**, and **52, 25.431, 53.679** is the 20% darker color. If you saturate the color by 10%, you get **68, 33.821, 53.471**, and if you desaturate by 10%, it is **76, 17.523, 54.772**.

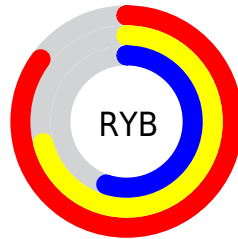
Distribution



Red (85%)

Green (65%)

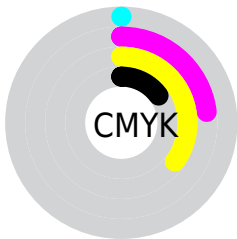
Blue (55%)



Red (85%)

Yellow (71%)

Blue (55%)

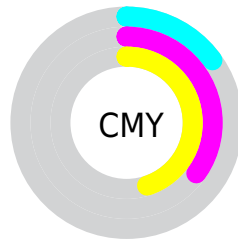


Cyan (0%)

Magenta (23%)

Yellow (35%)

Black (15%)



Cyan (15%)

Magenta (35%)

Yellow (45%)


Brightness & Saturation Gradients

These gradients show how the CIELCh color 72, 25.390, 54.077 changes by changing the brightness by 10 percent. The first figure shows a shift by +10% for each color and the second figure -10%.

Similar to the brightness gradients but the following saturation gradients show a change of the CIELCh color 72, 25.390, 54.077 by changing the saturation by 10% instead.

 72, 25.390, 54.077

 72, 25.390, 54.077

 100, 25.390,
54.077

 62, 25.390, 54.077

 92, 25.390, 54.077

 52, 25.390, 54.077

 42, 25.390, 54.077

 32, 25.390, 54.077

 22, 25.390, 54.077

 12, 25.390, 54.077

 2, 25.390, 54.077

 0, 25.390, 54.077

 72, 25.390, 54.077

 72, 25.390, 54.077

68, 33.821, 53.471

76, 17.523, 54.772

65, 42.801, 52.942

80, 10.197, 55.511

61, 52.233, 52.480

84, 3.369, 56.215

58, 61.855, 52.010

88, 3.008, 237.370

55, 71.058, 51.324

92, 8.986, 238.105

52, 78.659, 49.980

96, 11.933,
208.685

51, 81.763, 49.242

97, 13.158,
198.627

Harmonies

Complementary

The Complementary color scheme is a pair of colors which are on the opposite of each other on the color wheel.



72, 25.390, 54.077



74, 20.852, 241.224

Rectangle

The Rectangle color scheme consists of four colors that form a rectangle on the color wheel.



72, 25.390, 54.077



72, 25.390, 104.077



72, 25.390, 234.077



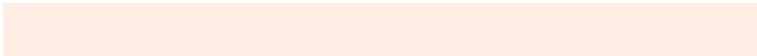
72, 25.390, 284.077

Sweetspot

The Sweet Spot groups the original color and five complimentary colors.



72, 25.389, 54.084



95, 8.322, 55.817



67, 39.026, 338.383



50, 5.619, 55.716



0, 0.000, 0.000



53, 0.007, 296.813

Same Dimension

The Same Dimension uses a secret algorithm to generate beautiful new colors.



72, 25.389, 54.084



81, 35.610, 53.634



81, 33.556, 98.321



43, 3.705, 55.940



41, 68.302, 49.824



8, 17.897, 41.610

Inverse Universe

The Inverse Universe completely reimagines the original color for something new.



74, 20.852, 241.224



84, 27.890, 242.618



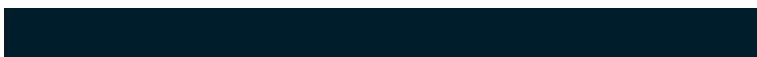
64, 35.369, 287.419



43, 3.541, 237.749



45, 38.864, 263.234



9, 13.769, 251.932

Previews

White Background



This preview shows how the CIELCh color 72, 25.390, 54.077 looks on a white background.

Color Contrast Check

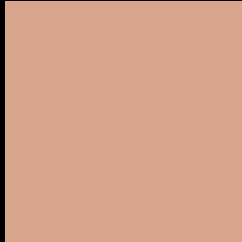
Large Text (above 18pt) WCAG AA × Fail

Any Text WCAG AA × Fail

Large Text (above 18pt) WCAG AAA × Fail

Any Text WCAG AAA × Fail

Black Background



This preview shows how the CIELCh color 72, 25.390, 54.077 looks on a black background.

Color Contrast Check

Large Text (above 18pt) WCAG AA ✓ Pass

Any Text WCAG AA ✓ Pass

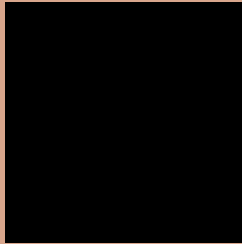
Large Text (above 18pt) WCAG AAA ✓ Pass

Any Text WCAG AAA ✓ Pass

If you want to check with other color combinations, try the [Color Contrast Checker](#).

CIELCh 72, 25.390, 54.077

Background



This preview shows how black text looks on a background with the CIELCh color 72, 25.390, 54.077.



This preview shows how white text looks on a background with the CIELCh color 72, 25.390, 54.077.

Color Blindness Simulation

Color vision deficiency is a very complex topic, and I could not describe the different causes any better than Wikipedia does, so if you want to learn more, you should check out their [article about color blindness](#).

Dichromacy



Original Color

72, 25.390, 54.077

Protanopia

72, 17.354, 93.712

Deuteranopia

72, 22.939, 66.687



Tritanopia
72, 23.348, 5.587

Trichromacy



Original Color
72, 25.390, 54.077

Protanomaly
72, 18.834, 75.823

Deutanomaly
72, 23.716, 61.441

Tritanomaly
72, 21.966, 24.147

Monochromacy



Original Color
72, 25.390, 54.077

Achromatopsia
73, 0.009, 296.813

Achromatomaly
72, 8.872, 57.338

CSS Examples

Text

The CSS property to change the color of the text to CIELCh 72, 25.390, 54.077 is called "color". The color property can be set on classes, ids or directly on the HTML element.

This example shows how text in the color `rgb(216, 166, 140)` looks like.

```
.text, #text, p{  
    color:rgb(216, 166, 140)  
}
```

If you want to add a text shadow in that color use the text-shadow property, you can generate a text shadow directly with our [CSS Text Shadow Generator](#).

Here you see how black text with a 4 pixel rgb(216, 166, 140) colored shadow looks like.

```
.shadow{ text-shadow: 4px 4px 2px rgb(216, 166, 140) }
```

Border

The CSS property to change the border of an element to CIELCh 72, 25.390, 54.077 is called "border". The border property can be set on classes, ids or directly on the HTML element.

This example shows the color as border, it can be applied via the CSS property "border" or "border-color".

```
.border, #border, table{ border:4px solid rgb(216, 166, 140) }
```

If only the border color should be changed use the property `border-color`.

```
.border{ border-color:rgb(216, 166, 140) }
```

If you want to add a box shadow in that color use:

Here you see how a box with a 4 pixel `rgb(216, 166, 140)` colored shadow looks like.

```
.boxshadow{ -moz-box-shadow:4px 4px 4px  
4px rgb(216, 166, 140); -webkit-box-  
shadow:4px 4px 4px 4px rgb(216, 166, 140);  
box-shadow:4px 4px 4px 4px rgb(216, 166,  
140) }
```

Background

The CSS property to change the background color of an element to CIELCh 72, 25.390, 54.077 is called "background". The background property can be set on classes, ids or directly on the HTML element.

```
.background, #background, body{  
background: rgb(216, 166, 140) }
```

If only the background color should be changed can be used:

```
.background{ background-color: rgb(216,  
166, 140) }
```

This example shows the color as background, it is applied via the CSS property "background".

To optimize and compress your CSS code, you can use our [online CSS compressor and optimizer](#) based on csstidy. If you want to create a linear or radial gradient as background or border, check our [CSS Gradient Generator](#).

Hey! You found this booklet interesting? Support Converting Colors with the new Membership Option!

The pro membership hides all ads, plus gives you double the colors in the color bucket, and more awesome pro features!

[Learn more, Memberships starting at \\$2.50/m!](#)

**Follow me
on Twitter!**

@ConvertingColor