

Converting Colors

CIELCh(72, 26.599, 66.790)

Have a look what the booklet for
CIELCh(72, 26.599, 66.790) contains.

CIELCh(72, 26.564, 66.809)	3
<i>Conversions</i>	4
<i>Details</i>	6
<i>Harmonies</i>	11
<i>Previews</i>	20
<i>Color Blindness Simulation</i>	23
<i>CSS Examples</i>	26

Color

CIELCh(72, 26.564, 66.809)

Conversions

Conversions Part 1

Format	Color
Hex	D3A985
RGB	211, 169, 133
RGB Percent	83%, 66%, 52%
CMY	0.1745, 0.3391, 0.4802
CMYK	0.00, 0.20, 0.37, 0.17
HSL	28°, 47%, 67%
HSV	28°, 37%, 83%
XYZ	45.0254, 43.6590, 28.0817
YIQ	177.4540, 36.5880, -2.2920

Conversions

Conversions Part 2

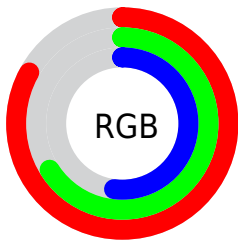
Format	Color
R _Y B	211, 200, 133
Decimal	13871493
CIE Lab	72.00, 10.46, 24.42
CIE LCh	72, 26.564, 66.809
Yxy	43.6590, 0.3856, 0.3739
Android (android.graphics.Color)	4292061573 (0xFFD3A985)
YUV	177.4540, -21.9158, 29.4198
Hunter-Lab	66.0750, 6.0038, 21.0544

Details

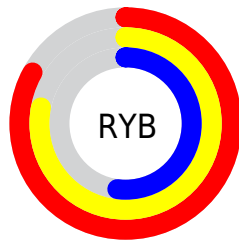
The CIELCh color **72, 26.564, 66.809** is a light color, and the websafe version is hex **CC9966**. A complement of this color would be **70, 23.306, 257.189**, and the grayscale version is **72, 0.009, 296.813**.

A 20% lighter version of the original color is **91, 23.126, 77.173**, and **52, 26.626, 66.923** is the 20% darker color. If you saturate the color by 10%, you get **69, 34.655, 65.656**, and if you desaturate by 10%, it is **75, 18.869, 67.979**.

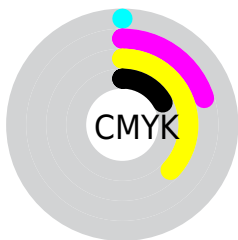
Distribution



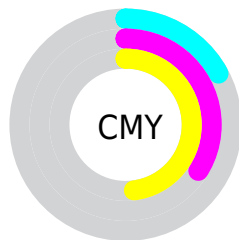
- Red (83%)
- Green (66%)
- Blue (52%)



- Red (83%)
- Yellow (78%)
- Blue (52%)



- Cyan (0%)
- Magenta (20%)
- Yellow (37%)
- Black (17%)



- Cyan (17%)
- Magenta (34%)
- Yellow (48%)


Brightness & Saturation Gradients

These gradients show how the CIELCh color 72, 26.564, 66.809 changes by changing the brightness by 10 percent. The first figure shows a shift by +10% for each color and the second figure -10%.

Similar to the brightness gradients but the following saturation gradients show a change of the CIELCh color 72, 26.564, 66.809 by changing the saturation by 10% instead.

 72, 26.564, 66.809

 72, 26.564, 66.809

 100, 26.564,
66.809

 62, 26.564, 66.809

 92, 26.564, 66.809

 52, 26.564, 66.809

 42, 26.564, 66.809

 32, 26.564, 66.809

 22, 26.564, 66.809

 12, 26.564, 66.809

 2, 26.564, 66.809

 0, 26.564, 66.809

 72, 26.564, 66.809

 72, 26.564, 66.809

69, 34.655, 65.656

75, 18.869, 67.979

66, 43.090, 64.494

79, 11.571, 69.139

63, 51.720, 63.294

82, 4.650, 70.254

60, 60.200, 61.957

85, 1.926, 251.712

57, 67.841, 60.271

89, 8.193, 252.680

55, 73.629, 57.891

92, 12.709,
247.947

54, 75.202, 57.188

95, 12.883,
215.299

97, 14.841,
198.517

Harmonies

Complementary

The Complementary color scheme is a pair of colors which are on the opposite of each other on the color wheel.



72, 26.564, 66.809



70, 23.306, 257.189

Rectangle

The Rectangle color scheme consists of four colors that form a rectangle on the color wheel.



72, 26.564, 66.809



72, 26.564, 116.809



72, 26.564, 246.809



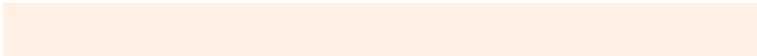
72, 26.564, 296.809

Sweetspot

The Sweet Spot groups the original color and five complimentary colors.



72, 26.564, 66.815



96, 8.595, 69.810



65, 37.296, 344.432



50, 5.797, 69.657



0, 0.000, 0.000



53, 0.007, 296.813

Same Dimension

The Same Dimension uses a secret algorithm to generate beautiful new colors.



72, 26.564, 66.815



83, 37.626, 65.951



82, 38.516, 104.358



42, 3.757, 70.000



44, 63.409, 57.828



8, 15.757, 53.897

Inverse Universe

The Inverse Universe completely reimagines the original color for something new.



70, 23.306, 257.189



80, 32.038, 258.967



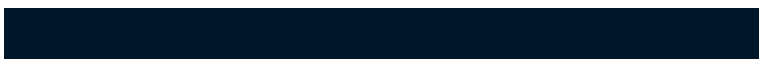
59, 41.915, 293.105



42, 3.654, 252.395



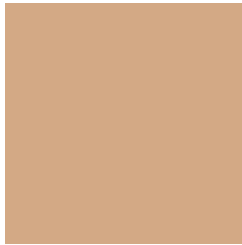
38, 48.637, 279.684



7, 15.381, 268.175

Previews

White Background



This preview shows how the CIELCh color 72, 26.564, 66.809 looks on a white background.

Color Contrast Check

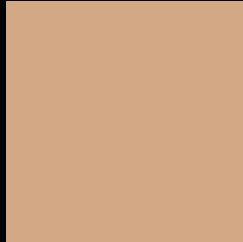
Large Text (above 18pt) WCAG AA × Fail

Any Text WCAG AA × Fail

Large Text (above 18pt) WCAG AAA × Fail

Any Text WCAG AAA × Fail

Black Background



This preview shows how the CIELCh color 72, 26.564, 66.809 looks on a black background.

Color Contrast Check

Large Text (above 18pt) WCAG AA ✓ Pass

Any Text WCAG AA ✓ Pass

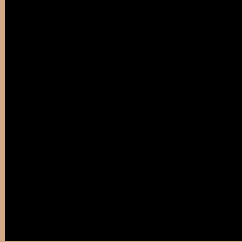
Large Text (above 18pt) WCAG AAA ✓ Pass

Any Text WCAG AAA ✓ Pass

If you want to check with other color combinations, try the [Color Contrast Checker](#).

CIELCh 72, 26.564, 66.809

Background



This preview shows how black text looks on a background with the CIELCh color 72, 26.564, 66.809.



This preview shows how white text looks on a background with the CIELCh color 72, 26.564, 66.809.

Color Blindness Simulation

Color vision deficiency is a very complex topic, and I could not describe the different causes any better than Wikipedia does, so if you want to learn more, you should check out their [article about color blindness](#).

Dichromacy





Tritanopia

72, 21.039, 3.497

Trichromacy



Original Color
72, 26.564, 66.809

Protanomaly
72, 22.936, 82.479

Deuteranomaly
72, 26.418, 68.818

Tritanomaly
72, 19.368, 29.008

Monochromacy



Original Color
72, 26.564, 66.809

Achromatopsia
72, 0.009, 296.813

Achromatomaly
72, 9.176, 69.696

CSS Examples

Text

The CSS property to change the color of the text to CIELCh 72, 26.564, 66.809 is called "color". The color property can be set on classes, ids or directly on the HTML element.

This example shows how text in the color `rgb(211, 169, 133)` looks like.

```
.text, #text, p{  
    color:rgb(211, 169, 133)  
}
```

If you want to add a text shadow in that color use the text-shadow property, you can generate a text shadow directly with our [CSS Text Shadow Generator](#).

Here you see how black text with a 4 pixel rgb(211, 169, 133) colored shadow looks like.

```
.shadow{ text-shadow: 4px 4px 2px rgb(211, 169, 133) }
```

Border

The CSS property to change the border of an element to CIELCh 72, 26.564, 66.809 is called "border". The border property can be set on classes, ids or directly on the HTML element.

This example shows the color as border, it can be applied via the CSS property "border" or "border-color".

```
.border, #border, table{ border:4px solid rgb(211, 169, 133) }
```

If only the border color should be changed use the property `border-color`.

```
.border{ border-color:rgb(211, 169, 133) }
```

If you want to add a box shadow in that color use:

Here you see how a box with a 4 pixel `rgb(211, 169, 133)` colored shadow looks like.

```
.boxshadow{ -moz-box-shadow:4px 4px 4px  
4px rgb(211, 169, 133); -webkit-box-  
shadow:4px 4px 4px 4px rgb(211, 169, 133);  
box-shadow:4px 4px 4px 4px rgb(211, 169,  
133) }
```

Background

The CSS property to change the background color of an element to CIELCh 72, 26.564, 66.809 is called "background". The background property can be set on classes, ids or directly on the HTML element.

```
.background, #background, body{  
background: rgb(211, 169, 133) }
```

If only the background color should be changed can be used:

```
.background{ background-color: rgb(211,  
169, 133) }
```

This example shows the color as background, it is applied via the CSS property "background".

To optimize and compress your CSS code, you can use our [online CSS compressor and optimizer](#) based on csstidy. If you want to create a linear or radial gradient as background or border, check our [CSS Gradient Generator](#).

Hey! You found this booklet interesting? Support Converting Colors with the new Membership Option!

The pro membership hides all ads, plus gives you double the colors in the color bucket, and more awesome pro features!

[Learn more, Memberships starting at \\$2.50/m!](#)

**Follow me
on Twitter!**

@ConvertingColor