

Converting Colors

CIELCh(72, 29.365, 71.639)

Have a look what the booklet for
CIELCh(72, 29.365, 71.639) contains.

CIELCh(72, 29.365, 71.639)	3
<i>Conversions</i>	4
<i>Details</i>	6
<i>Harmonies</i>	11
<i>Previews</i>	20
<i>Color Blindness Simulation</i>	23
<i>CSS Examples</i>	26

Color

CIELCh(72, 29.365, 71.639)

Conversions

Conversions Part 1

Format	Color
Hex	D2A97E
RGB	210, 169, 126
RGB Percent	82%, 66%, 49%
CMY	0.1759, 0.3367, 0.5054
CMYK	0.00, 0.20, 0.40, 0.18
HSL	31°, 48%, 66%
HSV	31°, 40%, 82%
XYZ	44.6071, 43.6590, 25.8584
YIQ	176.3570, 38.2390, -4.6810

Conversions

Conversions Part 2

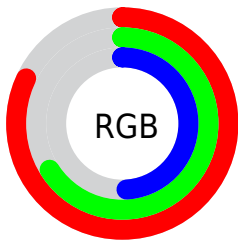
Format	Color
R _Y B	206, 210, 126
Decimal	13805950
CIE Lab	72.00, 9.25, 27.87
CIE LCh	72, 29.365, 71.639
Yxy	43.6590, 0.3909, 0.3826
Android (android.graphics.Color)	4291996030 (0xFFD2A97E)
YUV	176.3570, -24.8260, 29.5049
Hunter-Lab	66.0750, 4.8738, 23.0494

Details

The CIELCh color $72, 29.365, 71.639$ is a light color, and the websafe version is hex `CC9966`. A complement of this color would be $67, 26.429, 263.622$, and the grayscale version is $72, 0.009, 296.813$.

A 20% lighter version of the original color is $91, 26.329, 80.749$, and $52, 29.616, 71.748$ is the 20% darker color. If you saturate the color by 10%, you get $69, 37.504, 70.341$, and if you desaturate by 10%, it is $75, 21.530, 72.930$.

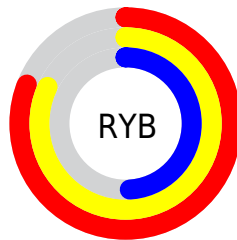
Distribution



Red (82%)

Green (66%)

Blue (49%)



Red (81%)

Yellow (82%)

Blue (49%)

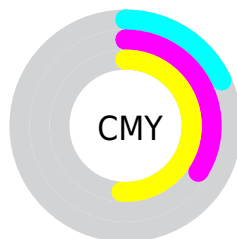


Cyan (0%)

Magenta (20%)

Yellow (40%)

Black (18%)



Cyan (18%)

Magenta (34%)

Yellow (51%)

Brightness & Saturation Gradients

These gradients show how the CIELCh color 72, 29.365, 71.639 changes by changing the brightness by 10 percent. The first figure shows a shift by +10% for each color and the second figure -10%.

Similar to the brightness gradients but the following saturation gradients show a change of the CIELCh color 72, 29.365, 71.639 by changing the saturation by 10% instead.

■ 72, 29.365, 71.639

■ 72, 29.365, 71.639

■ 100, 29.365,
71.639

■ 62, 29.365, 71.639

■ 92, 29.365, 71.639

■ 52, 29.365, 71.639

■ 42, 29.365, 71.639

■ 32, 29.365, 71.639

■ 22, 29.365, 71.639

■ 12, 29.365, 71.639

■ 2, 29.365, 71.639

■ 0, 29.365, 71.639

■ 72, 29.365, 71.639

■ 72, 29.365, 71.639

69, 37.504, 70.341

75, 21.530, 72.930

66, 45.854, 69.004

78, 14.026, 74.195

64, 54.195, 67.581

81, 6.849, 75.422

61, 62.072, 65.956

84, 0.023, 273.360

59, 68.676, 63.890

87, 6.613, 257.958

56, 73.430, 61.239

91, 12.954,
259.088

56, 73.440, 61.234

93, 12.386,
234.880

96, 13.765,
206.793

97, 14.953,
198.510

Harmonies

Complementary

The Complementary color scheme is a pair of colors which are on the opposite of each other on the color wheel.



72, 29.365, 71.639



67, 26.429, 263.622

Rectangle

The Rectangle color scheme consists of four colors that form a rectangle on the color wheel.



72, 29.365, 71.639



72, 29.365, 121.639



72, 29.365, 251.639



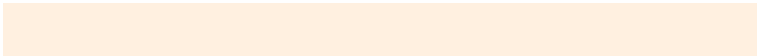
72, 29.365, 301.639

Sweetspot

The Sweet Spot groups the original color and five complimentary colors.



72, 29.365, 71.645



96, 9.683, 75.164



63, 39.001, 347.628



50, 6.442, 75.003



0, 0.000, 0.000



53, 0.007, 296.813

Same Dimension

The Same Dimension uses a secret algorithm to generate beautiful new colors.



72, 29.365, 71.645



83, 42.017, 70.531



83, 43.331, 106.342



42, 3.873, 75.490



46, 62.070, 61.866



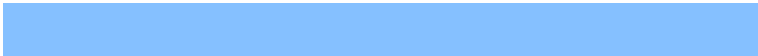
9, 15.710, 60.109

Inverse Universe

The Inverse Universe completely reimagines the original color for something new.



67, 26.429, 263.622



76, 36.905, 265.818



56, 48.053, 295.544



42, 3.796, 257.991



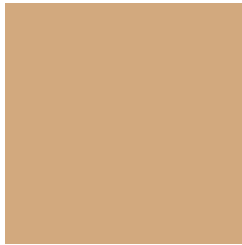
36, 53.805, 284.888



6, 16.465, 273.126

Previews

White Background



This preview shows how the CIELCh color 72, 29.365, 71.639 looks on a white background.

Color Contrast Check

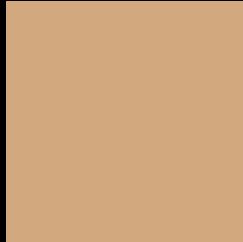
Large Text (above 18pt) WCAG AA × Fail

Any Text WCAG AA × Fail

Large Text (above 18pt) WCAG AAA × Fail

Any Text WCAG AAA × Fail

Black Background



This preview shows how the CIELCh color 72, 29.365, 71.639 looks on a black background.

Color Contrast Check

Large Text (above 18pt) WCAG AA ✓ Pass

Any Text WCAG AA ✓ Pass

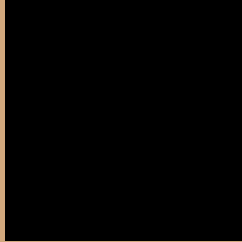
Large Text (above 18pt) WCAG AAA ✓ Pass

Any Text WCAG AAA ✓ Pass

If you want to check with other color combinations, try the [Color Contrast Checker](#).

CIELCh 72, 29.365, 71.639

Background



This preview shows how black text looks on a background with the CIELCh color 72, 29.365, 71.639.



This preview shows how white text looks on a background with the CIELCh color 72, 29.365, 71.639.

Color Blindness Simulation

Color vision deficiency is a very complex topic, and I could not describe the different causes any better than Wikipedia does, so if you want to learn more, you should check out their [article about color blindness](#).

Dichromacy



Original Color

72, 29.365, 71.639

Protanopia

72, 26.421, 95.827

Deuteranopia

72, 29.365, 71.639



Tritanopia
72, 21.039, 3.497

Trichromacy



Original Color
72, 29.365, 71.639

Protanomaly
72, 26.729, 86.606

Deuteranomaly
72, 29.365, 71.639

Tritanomaly
72, 19.811, 33.534

Monochromacy



Original Color
72, 29.365, 71.639

Achromatopsia
72, 0.009, 296.813

Achromatomaly
72, 10.283, 76.921

CSS Examples

Text

The CSS property to change the color of the text to CIELCh 72, 29.365, 71.639 is called "color". The color property can be set on classes, ids or directly on the HTML element.

This example shows how text in the color `rgb(210, 169, 126)` looks like.

```
.text, #text, p{  
    color:rgb(210, 169, 126)  
}
```

If you want to add a text shadow in that color use the text-shadow property, you can generate a text shadow directly with our [CSS Text Shadow Generator](#).

Here you see how black text with a 4 pixel rgb(210, 169, 126) colored shadow looks like.

```
.shadow{ text-shadow: 4px 4px 2px rgb(210, 169, 126) }
```

Border

The CSS property to change the border of an element to CIELCh 72, 29.365, 71.639 is called "border". The border property can be set on classes, ids or directly on the HTML element.

This example shows the color as border, it can be applied via the CSS property "border" or "border-color".

```
.border, #border, table{ border:4px solid rgb(210, 169, 126) }
```

If only the border color should be changed use the property `border-color`.

```
.border{ border-color:rgb(210, 169, 126) }
```

If you want to add a box shadow in that color use:

Here you see how a box with a 4 pixel `rgb(210, 169, 126)` colored shadow looks like.

```
.boxshadow{ -moz-box-shadow:4px 4px 4px 4px rgb(210, 169, 126); -webkit-box-shadow:4px 4px 4px 4px rgb(210, 169, 126); box-shadow:4px 4px 4px 4px rgb(210, 169, 126) }
```

Background

The CSS property to change the background color of an element to CIELCh 72, 29.365, 71.639 is called "background". The background property can be set on classes, ids or directly on the HTML element.

```
.background, #background, body{  
background: rgb(210, 169, 126) }
```

If only the background color should be changed can be used:

```
.background{ background-color: rgb(210,  
169, 126) }
```

This example shows the color as background, it is applied via the CSS property "background".

To optimize and compress your CSS code, you can use our [online CSS compressor and optimizer](#) based on csstidy. If you want to create a linear or radial gradient as background or border, check our [CSS Gradient Generator](#).

Hey! You found this booklet interesting? Support Converting Colors with the new Membership Option!

The pro membership hides all ads, plus gives you double the colors in the color bucket, and more awesome pro features!

[Learn more, Memberships starting at \\$2.50/m!](#)

**Follow me
on Twitter!**

@ConvertingColor