

Converting Colors

CIELCh(72, 3.807, 7.468)

Have a look what the booklet for
CIELCh(72, 3.807, 7.468) contains.

CIELCh(72, 3.938, 3.619)	3
<i>Conversions</i>	4
<i>Details</i>	6
<i>Harmonies</i>	11
<i>Previews</i>	20
<i>Color Blindness Simulation</i>	23
<i>CSS Examples</i>	26

Color

CIELCh(72, 3.938, 3.619)

Conversions

Conversions Part 1

Format	Color
Hex	B8AEB0
RGB	184, 174, 176
RGB Percent	72%, 68%, 69%
CMY	0.2780, 0.3172, 0.3094
CMYK	0.00, 0.05, 0.04, 0.28
HSL	348°, 7%, 70%
HSV	348°, 5%, 72%
XYZ	42.7999, 43.6590, 47.3040
YIQ	177.2180, 5.3180, 2.7420

Conversions

Conversions Part 2

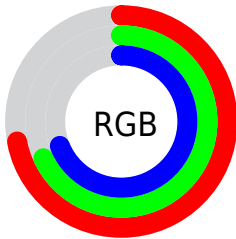
Format	Color
RYB	184, 174, 176
Decimal	12103344
CIELab	72.00, 3.93, 0.25
CIELCh	72, 3.938, 3.619
Yxy	43.6590, 0.3200, 0.3264
Android (android.graphics.Color)	4290293424 (0xFFB8AEB0)
YUV	177.2180, -0.6005, 5.9478
Hunter-Lab	66.0750, -0.0083, 3.8059

Details

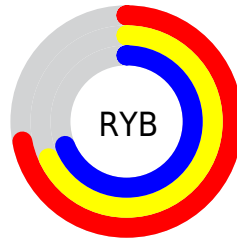
The CIELCh color **72, 3.938, 3.619** is a light color, and the websafe version is hex **999999**. A complement of this color would be **74, 3.850, 182.920**, and the grayscale version is **72, 0.009, 296.813**.

A 20% lighter version of the original color is **92, 4.246, 358.174**, and **52, 3.817, 2.089** is the 20% darker color. If you saturate the color by 10%, you get **67, 11.477, 4.729**, and if you desaturate by 10%, it is **77, 3.216, 183.041**.

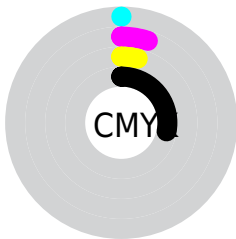
Distribution



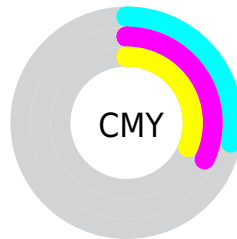
- Red (72%)
- Green (68%)
- Blue (69%)



- Red (72%)
- Yellow (68%)
- Blue (69%)



- Cyan (0%)
- Magenta (5%)
- Yellow (4%)
- Black (28%)



- Cyan (28%)
- Magenta (32%)
- Yellow (31%)

Brightness & Saturation Gradients

These gradients show how the CIELCh color 72, 3.938, 3.619 changes by changing the brightness by 10 percent. The first figure shows a shift by +10% for each color and the second figure -10%.

Similar to the brightness gradients but the following saturation gradients show a change of the CIELCh color 72, 3.938, 3.619 by changing the saturation by 10% instead.

■ 72, 3.938, 3.619

■ 72, 3.938, 3.619

■ 100, 3.938, 3.619

■ 62, 3.938, 3.619

■ 92, 3.938, 3.619

■ 52, 3.938, 3.619

■ 42, 3.938, 3.619

■ 32, 3.938, 3.619

■ 22, 3.938, 3.619

■ 12, 3.938, 3.619

■ 2, 3.938, 3.619

■ 0, 3.938, 3.619

■ 72, 3.938, 3.619

■ 72, 3.938, 3.619

67, 11.477, 4.729

77, 3.216, 183.041

62, 19.377, 5.943

82, 9.980, 182.185

57, 27.557, 7.395

88, 16.375,
181.500

53, 35.869, 9.174

93, 22.429,
180.898

49, 44.084, 11.394

45, 51.901, 14.198

95, 23.279,
191.317

42, 59.005, 17.733

96, 22.813,
198.011

40, 65.184, 22.094

39, 70.436, 27.183

Harmonies

Complementary

The Complementary color scheme is a pair of colors which are on the opposite of each other on the color wheel.



72, 3.938, 3.619



74, 3.850, 182.920

Rectangle

The Rectangle color scheme consists of four colors that form a rectangle on the color wheel.



72, 3.938, 3.619



72, 3.938, 53.619



72, 3.938, 183.619



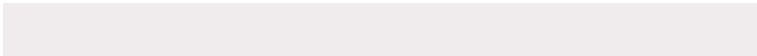
72, 3.938, 233.619

Sweetspot

The Sweet Spot groups the original color and five complimentary colors.



72, 3.936, 3.638



93, 1.783, 3.123



72, 6.234, 319.016



50, 1.013, 3.095



97, 0.011, 296.813



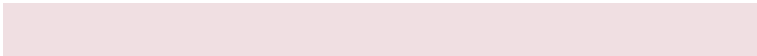
50, 0.007, 296.813

Same Dimension

The Same Dimension uses a secret algorithm to generate beautiful new colors.



72, 3.936, 3.638



90, 6.314, 3.827



73, 3.096, 51.052



37, 3.295, 3.865



32, 63.818, 28.676



2, 10.905, 7.448

Inverse Universe

The Inverse Universe completely reimagines the original color for something new.



72, 3.936, 3.638



90, 6.314, 3.827



73, 3.014, 232.097



37, 3.295, 3.865



32, 63.818, 28.676



2, 10.905, 7.448

Previews

White Background



This preview shows how the CIELCh color 72, 3.938, 3.619 looks on a white background.

Color Contrast Check

Large Text (above 18pt) WCAG AA × Fail

Any Text WCAG AA × Fail

Large Text (above 18pt) WCAG AAA × Fail

Any Text WCAG AAA × Fail

Black Background



This preview shows how the CIE LCh color 72, 3.938, 3.619 looks on a black background.

Color Contrast Check

Large Text (above 18pt) WCAG AA ✓ Pass

Any Text WCAG AA ✓ Pass

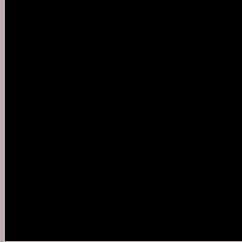
Large Text (above 18pt) WCAG AAA ✓ Pass

Any Text WCAG AAA ✓ Pass

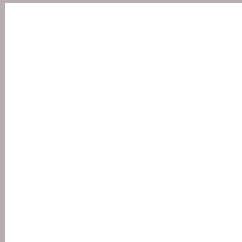
If you want to check with other color combinations, try the [Color Contrast Checker](#).

CIELCh 72, 3.938, 3.619

Background



This preview shows how black text looks on a background with the CIELCh color 72, 3.938, 3.619.

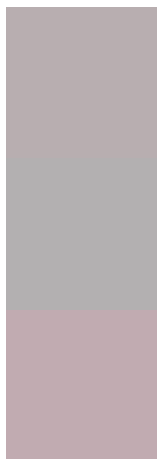


This preview shows how white text looks on a background with the CIELCh color 72, 3.938, 3.619.

Color Blindness Simulation

Color vision deficiency is a very complex topic, and I could not describe the different causes any better than Wikipedia does, so if you want to learn more, you should check out their [article about color blindness](#).

Dichromacy



Original Color


72, 3.938, 3.619

Protanopia

72, 1.259, 353.501

Deuteranopia

72, 8.976, 358.921



Tritanopia
72, 8.604, 324.792

Trichromacy



Original Color

72, 3.938, 3.619

Protanomaly

72, 2.515, 353.819

Deuteranomaly

72, 7.352, 358.353

Tritanomaly

72, 6.672, 332.709

Monochromacy



Original Color

72, 3.938, 3.619

Achromatopsia

72, 0.009, 296.813

Achromatomaly

72, 1.605, 359.434

CSS Examples

Text

The CSS property to change the color of the text to CIELCh 72, 3.938, 3.619 is called "color". The color property can be set on classes, ids or directly on the HTML element.

This example shows how text in the color `rgb(184, 174, 176)` looks like.

```
.text, #text, p{  
    color:rgb(184, 174, 176)  
}
```

If you want to add a text shadow in that color use the text-shadow property, you can generate a text shadow directly with our [CSS Text Shadow Generator](#).

Here you see how black text with a 4 pixel rgb(184, 174, 176) colored shadow looks like.

```
.shadow{ text-shadow: 4px 4px 2px rgb(184, 174, 176) }
```

Border

The CSS property to change the border of an element to CIELCh 72, 3.938, 3.619 is called "border". The border property can be set on classes, ids or directly on the HTML element.

This example shows the color as border, it can be applied via the CSS property "border" or "border-color".

```
.border, #border, table{ border:4px solid rgb(184, 174, 176) }
```

If only the border color should be changed use the property `border-color`.

```
.border{ border-color:rgb(184, 174, 176) }
```

If you want to add a box shadow in that color use:

Here you see how a box with a 4 pixel `rgb(184, 174, 176)` colored shadow looks like.

```
.boxshadow{ -moz-box-shadow:4px 4px 4px  
4px rgb(184, 174, 176); -webkit-box-  
shadow:4px 4px 4px 4px rgb(184, 174, 176);  
box-shadow:4px 4px 4px 4px rgb(184, 174,  
176) }
```

Background

The CSS property to change the background color of an element to CIELCh 72, 3.938, 3.619 is called "background". The background property can be set on classes, ids or directly on the HTML element.

```
.background, #background, body{  
background: rgb(184, 174, 176) }
```

If only the background color should be changed can be used:

```
.background{ background-color: rgb(184,  
174, 176) }
```

This example shows the color as background, it is applied via the CSS property "background".

To optimize and compress your CSS code, you can use our [online CSS compressor and optimizer](#) based on csstidy. If you want to create a linear or radial gradient as background or border, check our [CSS Gradient Generator](#).

Hey! You found this booklet interesting? Support Converting Colors with the new Membership Option!

The pro membership hides all ads, plus gives you double the colors in the color bucket, and more awesome pro features!

[Learn more, Memberships starting at \\$2.50/m!](#)

**Follow me
on Twitter!**

@ConvertingColor