

Converting Colors

CIELCh(72, 36.045, 6.286)

Have a look what the booklet for
CIELCh(72, 36.045, 6.286) contains.

CIELCh(72, 36.070, 5.892)	3
<i>Conversions</i>	4
<i>Details</i>	6
<i>Harmonies</i>	11
<i>Previews</i>	20
<i>Color Blindness Simulation</i>	23
<i>CSS Examples</i>	26

Color

CIELCh(72, 36.070, 5.892)

Conversions

Conversions Part 1

Format	Color
Hex	F097AB
RGB	240, 151, 171
RGB Percent	94%, 59%, 67%
CMY	0.0584, 0.4074, 0.3290
CMYK	0.00, 0.37, 0.29, 0.06
HSL	347°, 75%, 77%
HSV	347°, 37%, 94%
XYZ	54.4212, 43.6590, 44.1412
YIQ	179.8910, 46.6240, 25.0880

Conversions

Conversions Part 2

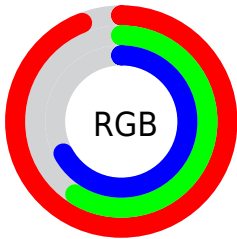
Format	Color
R_{YB}	240, 151, 171
Decimal	15767467
CIE _{Lab}	72.00, 35.88, 3.70
CIE _{LCh}	72, 36.070, 5.892
Yxy	43.6590, 0.3827, 0.3070
Android (android.graphics.Color)	4293957547 (0xFFFF097AB)
YUV	179.8910, -4.3833, 52.7156
Hunter-Lab	66.0750, 31.3865, 6.6440

Details

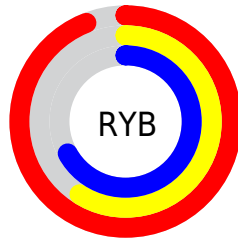
The CIELCh color $72, 36.070, 5.892$ is a light color, and the websafe version is hex `FF9999`. A complement of this color would be $89, 31.157, 177.742$, and the grayscale version is $73, 0.009, 296.813$.

A 20% lighter version of the original color is $87, 20.622, 350.752$, and $52, 35.846, 6.093$ is the 20% darker color. If you saturate the color by 10%, you get $67, 46.321, 7.780$, and if you desaturate by 10%, it is $78, 25.871, 4.362$.

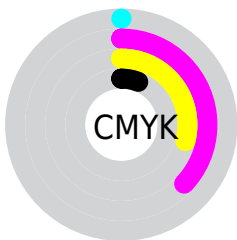
Distribution



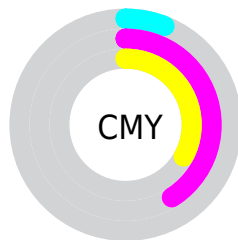
- Red (94%)
- Green (59%)
- Blue (67%)



- Red (94%)
- Yellow (59%)
- Blue (67%)



- Cyan (0%)
- Magenta (37%)
- Yellow (29%)
- Black (6%)



- Cyan (6%)
- Magenta (41%)
- Yellow (33%)

Brightness & Saturation Gradients

These gradients show how the CIELCh color 72, 36.070, 5.892 changes by changing the brightness by 10 percent. The first figure shows a shift by +10% for each color and the second figure -10%.

Similar to the brightness gradients but the following saturation gradients show a change of the CIELCh color 72, 36.070, 5.892 by changing the saturation by 10% instead.

 72, 36.070, 5.892  72, 36.070, 5.892

 100, 36.070, 5.892  62, 36.070, 5.892

 92, 36.070, 5.892  52, 36.070, 5.892

 42, 36.070, 5.892


 32, 36.070, 5.892

 22, 36.070, 5.892

 12, 36.070, 5.892

 2, 36.070, 5.892

 0, 36.070, 5.892

 72, 36.070, 5.892  72, 36.070, 5.892

67, 46.321, 7.780

78, 25.871, 4.362

62, 56.300, 10.142

84, 15.955, 3.084

57, 65.589, 13.136

90, 6.447, 1.964

54, 73.793, 16.922

97, 2.599, 181.360

52, 80.709, 21.589

99, 5.122, 199.210

51, 86.473, 26.989

50, 88.118, 28.551

Harmonies

Complementary

The Complementary color scheme is a pair of colors which are on the opposite of each other on the color wheel.



72, 36.070, 5.892



89, 31.157, 177.742

Rectangle

The Rectangle color scheme consists of four colors that form a rectangle on the color wheel.



72, 36.070, 5.892



72, 36.070, 55.892



72, 36.070, 185.892



72, 36.070, 235.892

Sweetspot

The Sweet Spot groups the original color and five complimentary colors.



72, 36.067, 5.895



93, 10.640, 2.400



72, 53.262, 319.418



48, 7.173, 2.550



0, 0.000, 0.000



53, 0.007, 296.813

Same Dimension

The Same Dimension uses a secret algorithm to generate beautiful new colors.



72, 36.067, 5.895



72, 45.351, 7.185



77, 30.005, 45.989



47, 5.207, 2.229



38, 71.456, 27.517



8, 28.934, 14.408

Inverse Universe

The Inverse Universe completely reimagines the original color for something new.



72, 36.067, 5.895



72, 45.351, 7.185



83, 23.427, 230.871



47, 5.207, 2.229



38, 71.456, 27.517



8, 28.934, 14.408

Previews

White Background



This preview shows how the CIELCh color 72, 36.070, 5.892 looks on a white background.

Color Contrast Check

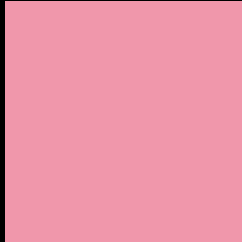
Large Text (above 18pt) WCAG AA × Fail

Any Text WCAG AA × Fail

Large Text (above 18pt) WCAG AAA × Fail

Any Text WCAG AAA × Fail

Black Background



This preview shows how the CIELCh color 72, 36.070, 5.892 looks on a black background.

Color Contrast Check

Large Text (above 18pt) WCAG AA ✓ Pass

Any Text WCAG AA ✓ Pass

Large Text (above 18pt) WCAG AAA ✓ Pass

Any Text WCAG AAA ✓ Pass

If you want to check with other color combinations, try the [Color Contrast Checker](#).

CIELCh 72, 36.070, 5.892

Background



This preview shows how black text looks on a background with the CIELCh color 72, 36.070, 5.892.

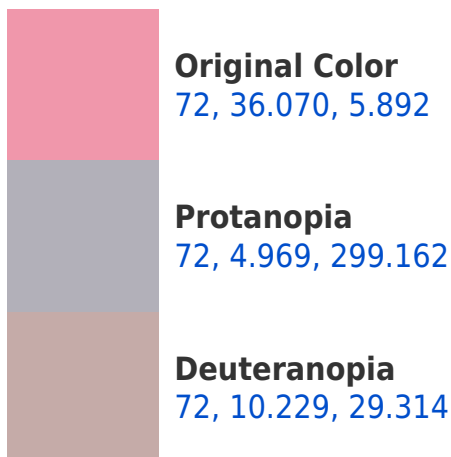


This preview shows how white text looks on a background with the CIELCh color 72, 36.070, 5.892.

Color Blindness Simulation

Color vision deficiency is a very complex topic, and I could not describe the different causes any better than Wikipedia does, so if you want to learn more, you should check out their [article about color blindness](#).

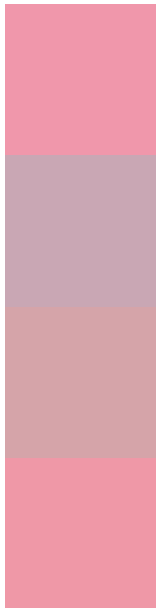
Dichromacy





Tritanopia
72, 34.894, 12.346

Trichromacy



Original Color
72, 36.070, 5.892

Protanomaly
72, 14.699, 352.104

Deuteranomaly
72, 19.313, 13.167

Tritanomaly
72, 34.974, 9.719

Monochromacy



Original Color
72, 36.070, 5.892

Achromatopsia
73, 0.009, 296.813

Achromatomaly
72, 13.330, 1.668

CSS Examples

Text

The CSS property to change the color of the text to CIELCh 72, 36.070, 5.892 is called "color". The color property can be set on classes, ids or directly on the HTML element.

This example shows how text in the color `rgb(240, 151, 171)` looks like.

```
.text, #text, p{  
    color:rgb(240, 151, 171)  
}
```

If you want to add a text shadow in that color use the text-shadow property, you can generate a text shadow directly with our [CSS Text Shadow Generator](#).

Here you see how black text with a 4 pixel rgb(240, 151, 171) colored shadow looks like.

```
.shadow{ text-shadow: 4px 4px 2px rgb(240, 151, 171) }
```

Border

The CSS property to change the border of an element to CIELCh 72, 36.070, 5.892 is called "border". The border property can be set on classes, ids or directly on the HTML element.

This example shows the color as border, it can be applied via the CSS property "border" or "border-color".

```
.border, #border, table{ border:4px solid rgb(240, 151, 171) }
```

If only the border color should be changed use the property `border-color`.

```
.border{ border-color:rgb(240, 151, 171) }
```

If you want to add a box shadow in that color use:

Here you see how a box with a 4 pixel `rgb(240, 151, 171)` colored shadow looks like.

```
.boxshadow{ -moz-box-shadow:4px 4px 4px  
4px rgb(240, 151, 171); -webkit-box-  
shadow:4px 4px 4px 4px rgb(240, 151, 171);  
box-shadow:4px 4px 4px 4px rgb(240, 151,  
171) }
```

Background

The CSS property to change the background color of an element to CIELCh 72, 36.070, 5.892 is called "background". The background property can be set on classes, ids or directly on the HTML element.

```
.background, #background, body{  
background: rgb(240, 151, 171) }
```

If only the background color should be changed can be used:

```
.background{ background-color: rgb(240,  
151, 171) }
```

This example shows the color as background, it is applied via the CSS property "background".

To optimize and compress your CSS code, you can use our [online CSS compressor and optimizer](#) based on csstidy. If you want to create a linear or radial gradient as background or border, check our [CSS Gradient Generator](#).

Hey! You found this booklet interesting? Support Converting Colors with the new Membership Option!

The pro membership hides all ads, plus gives you double the colors in the color bucket, and more awesome pro features!

[Learn more, Memberships starting at \\$2.50/m!](#)

**Follow me
on Twitter!**

@ConvertingColor