

# Converting Colors

CIELCh(72, 36.836, 15.771)

Have a look what the booklet for  
CIELCh(72, 36.836, 15.771) contains.

<b>CIELCh(72, 36.936, 15.660)</b> .....	3
<i><b>Conversions</b></i> .....	4
<i><b>Details</b></i> .....	6
<i><b>Harmonies</b></i> .....	11
<i><b>Previews</b></i> .....	20
<i><b>Color Blindness Simulation</b></i> .....	23
<i><b>CSS Examples</b></i> .....	26

# **Color**

**CIELCh(72, 36.936, 15.660)**

# Conversions

## Conversions Part 1

Format	Color
Hex	F397A0
RGB	243, 151, 160
RGB Percent	95%, 59%, 63%
CMY	0.0476, 0.4083, 0.3730
CMYK	0.00, 0.38, 0.34, 0.05
HSL	354°, 79%, 77%
HSV	354°, 38%, 95%
XYZ	54.2977, 43.6590, 38.7683
YIQ	179.5340, 51.9430, 22.3030

# Conversions

## Conversions Part 2

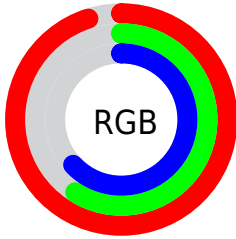
<b>Format</b>	<b>Color</b>
<b>R<sub>YB</sub></b>	243, 151, 160
Decimal	15964064
CIE <sub>Lab</sub>	72.00, 35.56, 9.97
CIE <sub>LCh</sub>	72, 36.936, 15.660
Yxy	43.6590, 0.3971, 0.3193
Android (android.graphics.Color)	4294154144 (0xFFFF397A0)
YUV	179.5340, -9.6303, 55.6597
Hunter-Lab	66.0750, 31.0526, 11.4652

# Details

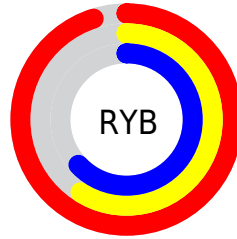
The CIELCh color **72, 36.936, 15.660** is a light color, and the websafe version is hex **FF9999**. A complement of this color would be **90, 29.725, 188.371**, and the grayscale version is **73, 0.009, 296.813**.

A 20% lighter version of the original color is **87, 18.734, 6.429**, and **52, 36.519, 15.566** is the 20% darker color. If you saturate the color by 10%, you get **66, 47.764, 17.587**, and if you desaturate by 10%, it is **78, 26.428, 14.145**.

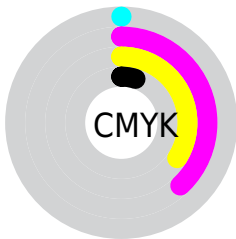
# Distribution



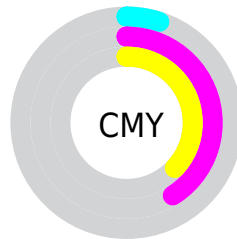
- Red (95%)
- Green (59%)
- Blue (63%)



- Red (95%)
- Yellow (59%)
- Blue (63%)



- Cyan (0%)
- Magenta (38%)
- Yellow (34%)
- Black (5%)



- Cyan (5%)
- Magenta (41%)
- Yellow (37%)

# Brightness & Saturation Gradients

These gradients show how the CIELCh color 72, 36.936, 15.660 changes by changing the brightness by 10 percent. The first figure shows a shift by +10% for each color and the second figure -10%.

Similar to the brightness gradients but the following saturation gradients show a change of the CIELCh color 72, 36.936, 15.660 by changing the saturation by 10% instead.



72, 36.936, 15.660

72, 36.936, 15.660

100, 36.936,  
15.660

62, 36.936, 15.660

92, 36.936, 15.660

52, 36.936, 15.660

42, 36.936, 15.660

32, 36.936, 15.660

22, 36.936, 15.660

12, 36.936, 15.660

2, 36.936, 15.660

0, 36.936, 15.660

72, 36.936, 15.660

72, 36.936, 15.660

66, 47.764, 17.587

78, 26.428, 14.145

62, 58.642, 20.043

84, 16.423, 12.923

57, 69.204, 23.165

91, 6.999, 11.892

54, 79.077, 27.024

97, 1.824, 191.511

52, 87.918, 31.485

99, 4.187, 199.298

51, 95.217, 35.930

51, 96.555, 36.703

# Harmonies

# Complementary

The Complementary color scheme is a pair of colors which are on the opposite of each other on the color wheel.



72, 36.936, 15.660



90, 29.725, 188.371

# Rectangle

The Rectangle color scheme consists of four colors that form a rectangle on the color wheel.



72, 36.936, 15.660



72, 36.936, 65.660



72, 36.936, 195.660



72, 36.936, 245.660

# Sweetspot

The Sweet Spot groups the original color and five complimentary colors.



72, 36.933, 15.663



93, 10.281, 12.206



74, 56.450, 323.528



48, 6.939, 12.343



0, 0.000, 0.000



53, 0.007, 296.813



# Same Dimension

The Same Dimension uses a secret algorithm to generate beautiful new colors.



72, 36.933, 15.663



71, 46.445, 17.009



80, 30.298, 60.108



48, 5.113, 12.053



39, 78.407, 35.980



8, 30.449, 21.052





# Inverse Universe

The Inverse Universe completely reimagines the original color for something new.



72, 36.933, 15.663



71, 46.445, 17.009



80, 25.339, 249.662



48, 5.113, 12.053



39, 78.407, 35.980



8, 30.449, 21.052



# Previews

## White Background



This preview shows how the CIELCh color 72, 36.936, 15.660 looks on a white background.

## Color Contrast Check

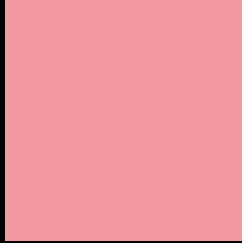
Large Text (above 18pt) WCAG AA × Fail

Any Text WCAG AA × Fail

Large Text (above 18pt) WCAG AAA × Fail

Any Text WCAG AAA × Fail

# Black Background



This preview shows how the CIE LCh color 72, 36.936, 15.660 looks on a black background.

## Color Contrast Check

Large Text (above 18pt) WCAG AA ✓ Pass

Any Text WCAG AA ✓ Pass

Large Text (above 18pt) WCAG AAA ✓ Pass

Any Text WCAG AAA ✓ Pass

If you want to check with other color combinations, try the [Color Contrast Checker](#).

# CIELCh 72, 36.936, 15.660

## Background



This preview shows how black text looks on a background with the CIELCh color 72, 36.936, 15.660.



This preview shows how white text looks on a background with the CIELCh color 72, 36.936, 15.660.

# Color Blindness Simulation

Color vision deficiency is a very complex topic, and I could not describe the different causes any better than Wikipedia does, so if you want to learn more, you should check out their [article about color blindness](#).

## Dichromacy



### Original Color

72, 36.936, 15.660

### Protanopia

72, 2.166, 49.343

### Deuteranopia

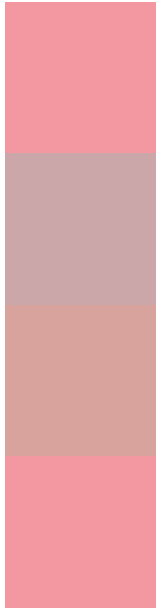
72, 14.588, 51.421



**Tritanopia**  
72, 36.906, 14.002



# Trichromacy



**Original Color**  
72, 36.936, 15.660

**Protanomaly**  
72, 14.034, 16.224

**Deuteranomaly**  
72, 21.591, 29.815

**Tritanomaly**  
72, 36.917, 14.831

# Monochromacy



**Original Color**  
72, 36.936, 15.660

**Achromatopsia**  
73, 0.009, 296.813

**Achromatomaly**  
72, 12.844, 13.281

# CSS Examples

## Text

The CSS property to change the color of the text to CIELCh 72, 36.936, 15.660 is called "color". The color property can be set on classes, ids or directly on the HTML element.

This example shows how text in the color `rgb(243, 151, 160)` looks like.

```
.text, #text, p{  
    color:rgb(243, 151, 160)  
}
```

If you want to add a text shadow in that color use the text-shadow property, you can generate a text shadow directly with our [CSS Text Shadow Generator](#).

Here you see how black text with a 4 pixel rgb(243, 151, 160) colored shadow looks like.

```
.shadow{ text-shadow: 4px 4px 2px rgb(243, 151, 160) }
```

## Border

The CSS property to change the border of an element to CIELCh 72, 36.936, 15.660 is called "border". The border property can be set on classes, ids or directly on the HTML element.

This example shows the color as border, it can be applied via the CSS property "border" or "border-color".

```
.border, #border, table{ border:4px solid rgb(243, 151, 160) }
```

If only the border color should be changed use the property `border-color`.

```
.border{ border-color:rgb(243, 151, 160) }
```

If you want to add a box shadow in that color use:

Here you see how a box with a 4 pixel `rgb(243, 151, 160)` colored shadow looks like.

```
.boxshadow{ -moz-box-shadow:4px 4px 4px  
4px rgb(243, 151, 160); -webkit-box-  
shadow:4px 4px 4px 4px rgb(243, 151, 160);  
box-shadow:4px 4px 4px 4px rgb(243, 151,  
160) }
```

# Background

The CSS property to change the background color of an element to CIELCh 72, 36.936, 15.660 is called "background". The background property can be set on classes, ids or directly on the HTML element.

```
.background, #background, body{  
background: rgb(243, 151, 160) }
```

If only the background color should be changed can be used:

```
.background{ background-color: rgb(243,  
151, 160) }
```

This example shows the color as background, it is applied via the CSS property "background".

To optimize and compress your CSS code, you can use our [online CSS compressor and optimizer](#) based on csstidy. If you want to create a linear or radial gradient as background or border, check our [CSS Gradient Generator](#).

Hey! You found this booklet interesting? Support Converting Colors with the new Membership Option!

The pro membership hides all ads, plus gives you double the colors in the color bucket, and more awesome pro features!

**[Learn more, Memberships starting at \\$2.50/m!](#)**

**Follow me  
on Twitter!**

@ConvertingColor