

Converting Colors

CIELCh(72, 38.290, 8.871)

Have a look what the booklet for
CIELCh(72, 38.290, 8.871) contains.

CIELCh(72, 38.290, 8.871)	3
<i>Conversions</i>	4
<i>Details</i>	6
<i>Harmonies</i>	11
<i>Previews</i>	20
<i>Color Blindness Simulation</i>	23
<i>CSS Examples</i>	26

Color

CIELCh(72, 38.290, 8.871)

Conversions

Conversions Part 1

Format	Color
Hex	F495A7
RGB	244, 149, 167
RGB Percent	96%, 58%, 65%
CMY	0.0420, 0.4147, 0.3441
CMYK	0.00, 0.39, 0.32, 0.04
HSL	349°, 82%, 77%
HSV	349°, 39%, 96%
XYZ	55.1926, 43.6590, 42.2004
YIQ	179.4570, 50.8420, 25.7380

Conversions

Conversions Part 2

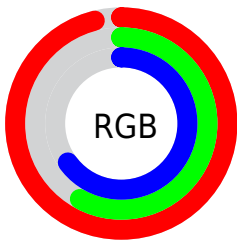
Format	Color
R_{YB}	244, 149, 167
Decimal	16029095
CIE Lab	72.00, 37.83, 5.90
CIE LCh	72, 38.290, 8.871
Yxy	43.6590, 0.3913, 0.3095
Android (android.graphics.Color)	4294219175 (0xFFFF495A7)
YUV	179.4570, -6.1413, 56.6042
Hunter-Lab	66.0750, 33.4704, 8.3855

Details

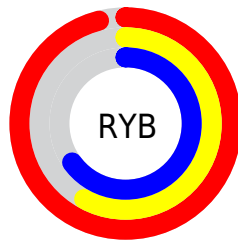
The CIELCh color $72, 38.290, 8.871$ is a light color, and the websafe version is hex `FF9999`. A complement of this color would be $90, 32.206, 180.361$, and the grayscale version is $73, 0.009, 296.813$.

A 20% lighter version of the original color is $87, 20.859, 354.398$, and $52, 38.667, 8.922$ is the 20% darker color. If you saturate the color by 10%, you get $67, 48.770, 10.865$, and if you desaturate by 10%, it is $78, 27.888, 7.272$.

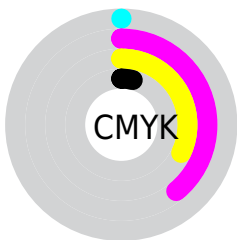
Distribution



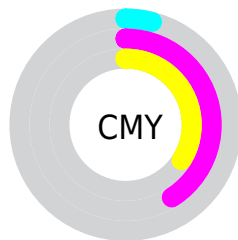
- Red (96%)
- Green (58%)
- Blue (65%)



- Red (96%)
- Yellow (58%)
- Blue (65%)



- Cyan (0%)
- Magenta (39%)
- Yellow (32%)
- Black (4%)



- Cyan (4%)
- Magenta (41%)
- Yellow (34%)

Brightness & Saturation Gradients

These gradients show how the CIELCh color 72, 38.290, 8.871 changes by changing the brightness by 10 percent. The first figure shows a shift by +10% for each color and the second figure -10%.

Similar to the brightness gradients but the following saturation gradients show a change of the CIELCh color 72, 38.290, 8.871 by changing the saturation by 10% instead.

 72, 38.290, 8.871  72, 38.290, 8.871

 100, 38.290, 8.871  62, 38.290, 8.871

 92, 38.290, 8.871  52, 38.290, 8.871

 42, 38.290, 8.871

 32, 38.290, 8.871

 22, 38.290, 8.871

 12, 38.290, 8.871

 2, 38.290, 8.871

 0, 38.290, 8.871

 72, 38.290, 8.871  72, 38.290, 8.871

67, 48.770, 10.865

78, 27.888, 7.272

62, 59.000, 13.380

84, 17.803, 5.954

58, 68.567, 16.572

90, 8.162, 4.825

54, 77.108, 20.578

97, 0.978, 184.584

52, 84.457, 25.410

99, 3.703, 199.349

51, 90.761, 30.709

51, 91.446, 31.256

Harmonies

Complementary

The Complementary color scheme is a pair of colors which are on the opposite of each other on the color wheel.



72, 38.290, 8.871



90, 32.206, 180.361

Rectangle

The Rectangle color scheme consists of four colors that form a rectangle on the color wheel.



72, 38.290, 8.871



72, 38.290, 58.871



72, 38.290, 188.871



72, 38.290, 238.871

Sweetspot

The Sweet Spot groups the original color and five complimentary colors.



72, 38.287, 8.874



92, 11.495, 5.166



72, 57.021, 320.526



48, 7.652, 5.310



0, 0.000, 0.000



53, 0.007, 296.813

Same Dimension

The Same Dimension uses a secret algorithm to generate beautiful new colors.



72, 38.287, 8.874



70, 48.452, 10.475



78, 31.788, 49.388



48, 5.231, 4.889



39, 73.896, 30.272



9, 30.040, 17.207

Inverse Universe

The Inverse Universe completely reimagines the original color for something new.



72, 38.287, 8.874



70, 48.452, 10.475



83, 24.840, 235.951



48, 5.231, 4.889



39, 73.896, 30.272



9, 30.040, 17.207

Previews

White Background



This preview shows how the CIELCh color 72, 38.290, 8.871 looks on a white background.

Color Contrast Check

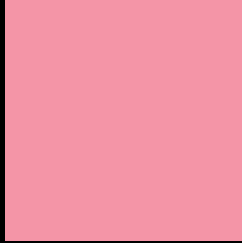
Large Text (above 18pt) WCAG AA × Fail

Any Text WCAG AA × Fail

Large Text (above 18pt) WCAG AAA × Fail

Any Text WCAG AAA × Fail

Black Background



This preview shows how the CIELCh color 72, 38.290, 8.871 looks on a black background.

Color Contrast Check

Large Text (above 18pt) WCAG AA ✓ Pass

Any Text WCAG AA ✓ Pass

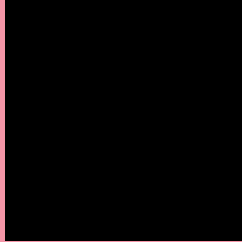
Large Text (above 18pt) WCAG AAA ✓ Pass

Any Text WCAG AAA ✓ Pass

If you want to check with other color combinations, try the [Color Contrast Checker](#).

CIELCh 72, 38.290, 8.871

Background



This preview shows how black text looks on a background with the CIELCh color 72, 38.290, 8.871.

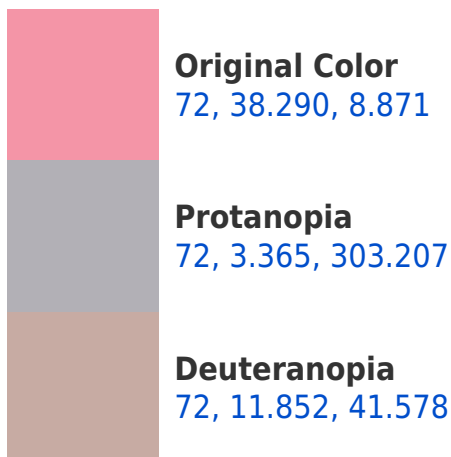


This preview shows how white text looks on a background with the CIELCh color 72, 38.290, 8.871.

Color Blindness Simulation

Color vision deficiency is a very complex topic, and I could not describe the different causes any better than Wikipedia does, so if you want to learn more, you should check out their [article about color blindness](#).

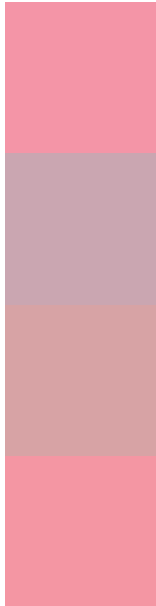
Dichromacy





Tritanopia
72, 37.742, 14.313

Trichromacy



Original Color
72, 38.290, 8.871

Protanomaly
72, 14.976, 357.333

Deuteranomaly
72, 20.530, 18.268

Tritanomaly
72, 37.736, 12.690

Monochromacy



Original Color
72, 38.290, 8.871

Achromatopsia
73, 0.009, 296.813

Achromatomaly
72, 13.448, 6.659

CSS Examples

Text

The CSS property to change the color of the text to CIELCh 72, 38.290, 8.871 is called "color". The color property can be set on classes, ids or directly on the HTML element.

This example shows how text in the color `rgb(244, 149, 167)` looks like.

```
.text, #text, p{  
    color:rgb(244, 149, 167)  
}
```

If you want to add a text shadow in that color use the text-shadow property, you can generate a text shadow directly with our [CSS Text Shadow Generator](#).

Here you see how black text with a 4 pixel rgb(244, 149, 167) colored shadow looks like.

```
.shadow{ text-shadow: 4px 4px 2px rgb(244, 149, 167) }
```

Border

The CSS property to change the border of an element to CIELCh 72, 38.290, 8.871 is called "border". The border property can be set on classes, ids or directly on the HTML element.

This example shows the color as border, it can be applied via the CSS property "border" or "border-color".

```
.border, #border, table{ border:4px solid rgb(244, 149, 167) }
```

If only the border color should be changed use the property `border-color`.

```
.border{ border-color:rgb(244, 149, 167) }
```

If you want to add a box shadow in that color use:

Here you see how a box with a 4 pixel `rgb(244, 149, 167)` colored shadow looks like.

```
.boxshadow{ -moz-box-shadow:4px 4px 4px  
4px rgb(244, 149, 167); -webkit-box-  
shadow:4px 4px 4px 4px rgb(244, 149, 167);  
box-shadow:4px 4px 4px 4px rgb(244, 149,  
167) }
```

Background

The CSS property to change the background color of an element to CIELCh 72, 38.290, 8.871 is called "background". The background property can be set on classes, ids or directly on the HTML element.

```
.background, #background, body{  
background: rgb(244, 149, 167) }
```

If only the background color should be changed can be used:

```
.background{ background-color: rgb(244,  
149, 167) }
```

This example shows the color as background, it is applied via the CSS property "background".

To optimize and compress your CSS code, you can use our [online CSS compressor and optimizer](#) based on csstidy. If you want to create a linear or radial gradient as background or border, check our [CSS Gradient Generator](#).

Hey! You found this booklet interesting? Support Converting Colors with the new Membership Option!

The pro membership hides all ads, plus gives you double the colors in the color bucket, and more awesome pro features!

[Learn more, Memberships starting at \\$2.50/m!](#)

**Follow me
on Twitter!**

@ConvertingColor