

Converting Colors

CIELCh(72, 39.538, 12.175)

Have a look what the booklet for
CIELCh(72, 39.538, 12.175) contains.

CIELCh(72, 39.792, 11.966)	3
<i>Conversions</i>	4
<i>Details</i>	6
<i>Harmonies</i>	11
<i>Previews</i>	20
<i>Color Blindness Simulation</i>	23
<i>CSS Examples</i>	26

Color

CIELCh(72, 39.792, 11.966)

Conversions

Conversions Part 1

Format	Color
Hex	F794A3
RGB	247, 148, 163
RGB Percent	97%, 58%, 64%
CMY	0.0309, 0.4191, 0.3604
CMYK	0.00, 0.40, 0.34, 0.03
HSL	351°, 86%, 77%
HSV	351°, 40%, 97%
XYZ	55.6286, 43.6590, 40.1966
YIQ	179.3110, 54.1890, 25.6530

Conversions

Conversions Part 2

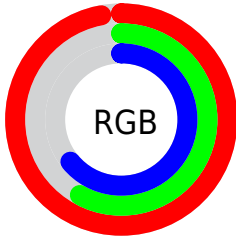
Format	Color
R_{YB}	247, 148, 163
Decimal	16225443
CIE _{Lab}	72.00, 38.93, 8.25
CIE _{LCh}	72, 39.792, 11.966
Yxy	43.6590, 0.3988, 0.3130
Android (android.graphics.Color)	4294415523 (0xFFFF794A3)
YUV	179.3110, -8.0413, 59.3633
Hunter-Lab	66.0750, 34.6481, 10.1835

Details

The CIELCh color **72, 39.792, 11.966** is a light color, and the websafe version is hex **FF9999**. A complement of this color would be **91, 32.567, 183.426**, and the grayscale version is **73, 0.009, 296.813**.

A 20% lighter version of the original color is **87, 20.656, 358.867**, and **52, 39.877, 12.135** is the 20% darker color. If you saturate the color by 10%, you get **67, 50.524, 14.026**, and if you desaturate by 10%, it is **78, 29.197, 10.330**.

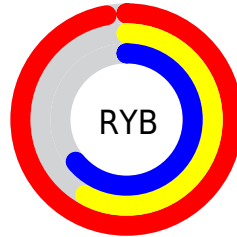
Distribution



Red (97%)

Green (58%)

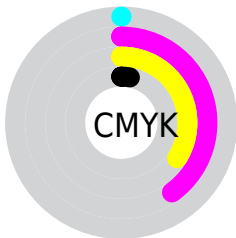
Blue (64%)



Red (97%)

Yellow (58%)

Blue (64%)

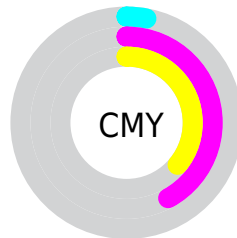


Cyan (0%)

Magenta (40%)

Yellow (34%)

Black (3%)



Cyan (3%)

Magenta (42%)

Yellow (36%)

Brightness & Saturation Gradients

These gradients show how the CIELCh color 72, 39.792, 11.966 changes by changing the brightness by 10 percent. The first figure shows a shift by +10% for each color and the second figure -10%.

Similar to the brightness gradients but the following saturation gradients show a change of the CIELCh color 72, 39.792, 11.966 by changing the saturation by 10% instead.

72, 39.792, 11.966

72, 39.792, 11.966

100, 39.792,
11.966

62, 39.792, 11.966

92, 39.792, 11.966

52, 39.792, 11.966

42, 39.792, 11.966

32, 39.792, 11.966

22, 39.792, 11.966

12, 39.792, 11.966

2, 39.792, 11.966

0, 39.792, 11.966

72, 39.792, 11.966

72, 39.792, 11.966

67, 50.524, 14.026

78, 29.197, 10.330

62, 61.069, 16.639

84, 18.973, 8.998

58, 71.027, 19.953

91, 9.244, 7.877

55, 80.050, 24.068

97, 0.061, 356.913

53, 87.947, 28.896

99, 2.728, 199.475

52, 94.669, 33.821

Harmonies

Complementary

The Complementary color scheme is a pair of colors which are on the opposite of each other on the color wheel.



72, 39.792, 11.966



91, 32.567, 183.426

Rectangle

The Rectangle color scheme consists of four colors that form a rectangle on the color wheel.



72, 39.792, 11.966



72, 39.792, 61.966



72, 39.792, 191.966



72, 39.792, 241.966

Sweetspot

The Sweet Spot groups the original color and five complimentary colors.



72, 39.789, 11.969



92, 11.373, 8.085



73, 59.637, 321.600



48, 7.573, 8.227



0, 0.000, 0.000



53, 0.007, 296.813

Same Dimension

The Same Dimension uses a secret algorithm to generate beautiful new colors.



72, 39.789, 11.969



70, 49.563, 13.579



79, 32.923, 52.824



48, 5.172, 7.815



39, 75.782, 32.884



8, 30.195, 18.825

Inverse Universe

The Inverse Universe completely reimagines the original color for something new.



72, 39.789, 11.969



70, 49.563, 13.579



82, 25.993, 240.948



48, 5.172, 7.815



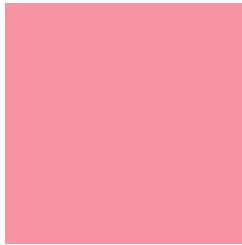
39, 75.782, 32.884



8, 30.195, 18.825

Previews

White Background



This preview shows how the CIELCh color 72, 39.792, 11.966 looks on a white background.

Color Contrast Check

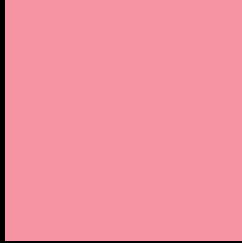
Large Text (above 18pt) WCAG AA × Fail

Any Text WCAG AA × Fail

Large Text (above 18pt) WCAG AAA × Fail

Any Text WCAG AAA × Fail

Black Background



This preview shows how the CIELCh color 72, 39.792, 11.966 looks on a black background.

Color Contrast Check

Large Text (above 18pt) WCAG AA ✓ Pass

Any Text WCAG AA ✓ Pass

Large Text (above 18pt) WCAG AAA ✓ Pass

Any Text WCAG AAA ✓ Pass

If you want to check with other color combinations, try the [Color Contrast Checker](#).

CIELCh 72, 39.792, 11.966

Background



This preview shows how black text looks on a background with the CIELCh color 72, 39.792, 11.966.

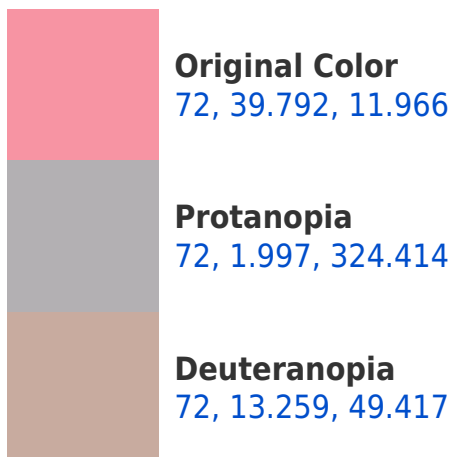


This preview shows how white text looks on a background with the CIELCh color 72, 39.792, 11.966.

Color Blindness Simulation

Color vision deficiency is a very complex topic, and I could not describe the different causes any better than Wikipedia does, so if you want to learn more, you should check out their [article about color blindness](#).

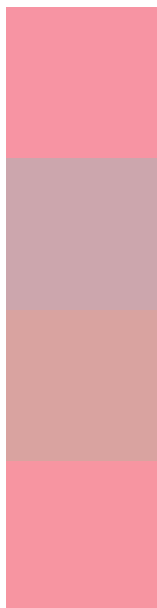
Dichromacy





Tritanopia
72, 39.373, 14.885

Trichromacy



Original Color
72, 39.792, 11.966

Protanomaly
72, 15.121, 6.288

Deuteranomaly
72, 21.648, 25.566

Tritanomaly
72, 39.358, 14.107

Monochromacy



Original Color
72, 39.792, 11.966

Achromatopsia
73, 0.009, 296.813

Achromatomaly
72, 14.142, 9.662

CSS Examples

Text

The CSS property to change the color of the text to CIELCh 72, 39.792, 11.966 is called "color". The color property can be set on classes, ids or directly on the HTML element.

This example shows how text in the color `rgb(247, 148, 163)` looks like.

```
.text, #text, p{  
    color:rgb(247, 148, 163)  
}
```

If you want to add a text shadow in that color use the text-shadow property, you can generate a text shadow directly with our [CSS Text Shadow Generator](#).

Here you see how black text with a 4 pixel rgb(247, 148, 163) colored shadow looks like.

```
.shadow{ text-shadow: 4px 4px 2px rgb(247, 148, 163) }
```

Border

The CSS property to change the border of an element to CIELCh 72, 39.792, 11.966 is called "border". The border property can be set on classes, ids or directly on the HTML element.

This example shows the color as border, it can be applied via the CSS property "border" or "border-color".

```
.border, #border, table{ border:4px solid rgb(247, 148, 163) }
```

If only the border color should be changed use the property `border-color`.

```
.border{ border-color:rgb(247, 148, 163) }
```

If you want to add a box shadow in that color use:

Here you see how a box with a 4 pixel `rgb(247, 148, 163)` colored shadow looks like.

```
.boxshadow{ -moz-box-shadow:4px 4px 4px  
4px rgb(247, 148, 163); -webkit-box-  
shadow:4px 4px 4px 4px rgb(247, 148, 163);  
box-shadow:4px 4px 4px 4px rgb(247, 148,  
163) }
```

Background

The CSS property to change the background color of an element to CIELCh 72, 39.792, 11.966 is called "background". The background property can be set on classes, ids or directly on the HTML element.

```
.background, #background, body{  
background: rgb(247, 148, 163) }
```

If only the background color should be changed can be used:

```
.background{ background-color: rgb(247,  
148, 163) }
```

This example shows the color as background, it is applied via the CSS property "background".

To optimize and compress your CSS code, you can use our [online CSS compressor and optimizer](#) based on csstidy. If you want to create a linear or radial gradient as background or border, check our [CSS Gradient Generator](#).

Hey! You found this booklet interesting? Support Converting Colors with the new Membership Option!

The pro membership hides all ads, plus gives you double the colors in the color bucket, and more awesome pro features!

[Learn more, Memberships starting at \\$2.50/m!](#)

**Follow me
on Twitter!**

@ConvertingColor