

# Converting Colors

CIELCh(72, 41.728, 16.847)

Have a look what the booklet for  
CIELCh(72, 41.728, 16.847) contains.

<b>CIELCh(72, 41.525, 17.055)</b> .....	3
<i><b>Conversions</b></i> .....	4
<i><b>Details</b></i> .....	6
<i><b>Harmonies</b></i> .....	11
<i><b>Previews</b></i> .....	20
<i><b>Color Blindness Simulation</b></i> .....	23
<i><b>CSS Examples</b></i> .....	26

# **Color**

**CIELCh(72, 41.525, 17.055)**

# Conversions

## Conversions Part 1

Format	Color
Hex	FA939C
RGB	250, 147, 156
RGB Percent	98%, 58%, 61%
CMY	0.0191, 0.4230, 0.3878
CMYK	0.00, 0.41, 0.38, 0.02
HSL	355°, 91%, 78%
HSV	355°, 41%, 98%
XYZ	55.9370, 43.6590, 36.9841
YIQ	178.8230, 58.4990, 24.6350

# Conversions

## Conversions Part 2

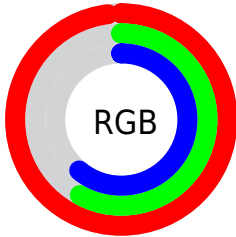
Format	Color
R <sub>Y</sub> B	250, 147, 156
Decimal	16421788
CIE Lab	72.00, 39.70, 12.18
CIE LCh	72, 41.525, 17.055
Yxy	43.6590, 0.4096, 0.3197
Android (android.graphics.Color)	4294611868 (0xFFFA939C)
YUV	178.8230, -11.2517, 62.4222
Hunter-Lab	66.0750, 35.4813, 13.0661

# Details

The CIELCh color **72, 41.525, 17.055** is a light color, and the websafe version is hex **FF9999**. A complement of this color would be **92, 32.492, 189.064**, and the grayscale version is **73, 0.009, 296.813**.

A 20% lighter version of the original color is **86, 20.202, 9.128**, and **52, 41.750, 16.896** is the 20% darker color. If you saturate the color by 10%, you get **67, 52.736, 19.140**, and if you desaturate by 10%, it is **78, 30.585, 15.426**.

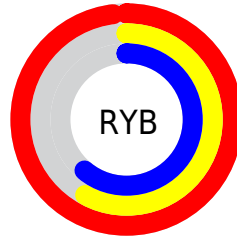
# Distribution



Red (98%)

Green (58%)

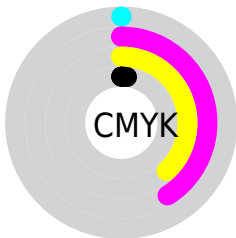
Blue (61%)



Red (98%)

Yellow (58%)

Blue (61%)

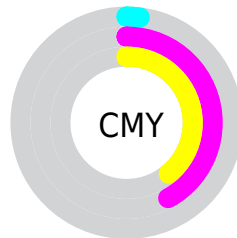


Cyan (0%)

Magenta (41%)

Yellow (38%)

Black (2%)



Cyan (2%)

Magenta (42%)

Yellow (39%)

# Brightness & Saturation Gradients

These gradients show how the CIELCh color 72, 41.525, 17.055 changes by changing the brightness by 10 percent. The first figure shows a shift by +10% for each color and the second figure -10%.

Similar to the brightness gradients but the following saturation gradients show a change of the CIELCh color 72, 41.525, 17.055 by changing the saturation by 10% instead.



72, 41.525, 17.055

72, 41.525, 17.055

100, 41.525,  
17.055

62, 41.525, 17.055

92, 41.525, 17.055

52, 41.525, 17.055

42, 41.525, 17.055

32, 41.525, 17.055

22, 41.525, 17.055

12, 41.525, 17.055

2, 41.525, 17.055

0, 41.525, 17.055

72, 41.525, 17.055

72, 41.525, 17.055

67, 52.736, 19.140

78, 30.585, 15.426

62, 63.912, 21.803

84, 20.134, 14.127

58, 74.664, 25.165

91, 10.279, 13.062

55, 84.607, 29.234

98, 1.051, 11.673

53, 93.315, 33.714

100, 1.688,  
199.691

52, 99.387, 37.240

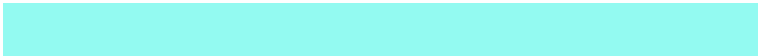
# Harmonies

# Complementary

The Complementary color scheme is a pair of colors which are on the opposite of each other on the color wheel.



72, 41.525, 17.055



92, 32.492, 189.064

# Rectangle

The Rectangle color scheme consists of four colors that form a rectangle on the color wheel.



72, 41.525, 17.055



72, 41.525, 67.055



72, 41.525, 197.055



72, 41.525, 247.055

# Sweetspot

The Sweet Spot groups the original color and five complimentary colors.



72, 41.522, 17.058



92, 11.237, 13.145



74, 62.685, 323.674



48, 7.487, 13.276



0, 0.000, 0.000



53, 0.007, 296.813



# Same Dimension

The Same Dimension uses a secret algorithm to generate beautiful new colors.



72, 41.522, 17.058



69, 51.078, 18.652



81, 34.117, 59.796



49, 5.192, 12.896



39, 79.730, 36.535



9, 31.596, 22.609





# Inverse Universe

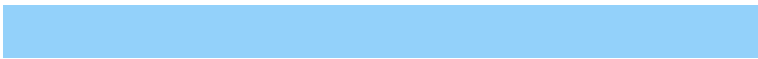
The Inverse Universe completely reimagines the original color for something new.



72, 41.522, 17.058



69, 51.078, 18.652



81, 28.012, 250.415



49, 5.192, 12.896



39, 79.730, 36.535



9, 31.596, 22.609



# Previews

## White Background



This preview shows how the CIELCh color 72, 41.525, 17.055 looks on a white background.

## Color Contrast Check

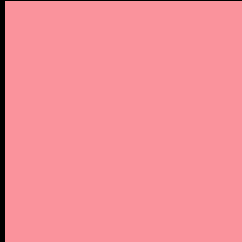
Large Text (above 18pt) WCAG AA × Fail

Any Text WCAG AA × Fail

Large Text (above 18pt) WCAG AAA × Fail

Any Text WCAG AAA × Fail

# Black Background



This preview shows how the CIELCh color 72, 41.525, 17.055 looks on a black background.

## Color Contrast Check

Large Text (above 18pt) WCAG AA ✓ Pass

Any Text WCAG AA ✓ Pass

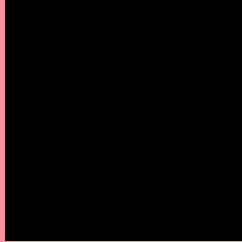
Large Text (above 18pt) WCAG AAA ✓ Pass

Any Text WCAG AAA ✓ Pass

If you want to check with other color combinations, try the [Color Contrast Checker](#).

# CIELCh 72, 41.525, 17.055

## Background



This preview shows how black text looks on a background with the CIELCh color 72, 41.525, 17.055.



This preview shows how white text looks on a background with the CIELCh color 72, 41.525, 17.055.

# Color Blindness Simulation

Color vision deficiency is a very complex topic, and I could not describe the different causes any better than Wikipedia does, so if you want to learn more, you should check out their [article about color blindness](#).

## Dichromacy



### Original Color

72, 41.525, 17.055

### Protanopia

72, 2.865, 68.488

### Deuteranopia

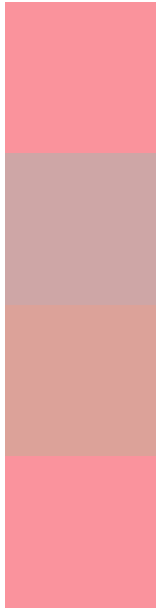
72, 16.597, 56.009



**Tritanopia**  
72, 41.450, 15.582



# Trichromacy



**Original Color**  
72, 41.525, 17.055

**Protanomaly**  
72, 15.682, 20.773

**Deuteranomaly**  
72, 24.131, 32.936

**Tritanomaly**  
72, 41.484, 16.319

# Monochromacy



**Original Color**  
72, 41.525, 17.055

**Achromatopsia**  
73, 0.009, 296.813

**Achromatomaly**  
72, 14.878, 12.390

# CSS Examples

## Text

The CSS property to change the color of the text to CIELCh 72, 41.525, 17.055 is called "color". The color property can be set on classes, ids or directly on the HTML element.

This example shows how text in the color `rgb(250, 147, 156)` looks like.

```
.text, #text, p{  
    color:rgb(250, 147, 156)  
}
```

If you want to add a text shadow in that color use the text-shadow property, you can generate a text shadow directly with our [CSS Text Shadow Generator](#).

Here you see how black text with a 4 pixel rgb(250, 147, 156) colored shadow looks like.

```
.shadow{ text-shadow: 4px 4px 2px rgb(250, 147, 156) }
```

## Border

The CSS property to change the border of an element to CIELCh 72, 41.525, 17.055 is called "border". The border property can be set on classes, ids or directly on the HTML element.

This example shows the color as border, it can be applied via the CSS property "border" or "border-color".

```
.border, #border, table{ border:4px solid rgb(250, 147, 156) }
```

If only the border color should be changed use the property `border-color`.

```
.border{ border-color:rgb(250, 147, 156) }
```

If you want to add a box shadow in that color use:

Here you see how a box with a 4 pixel `rgb(250, 147, 156)` colored shadow looks like.

```
.boxshadow{ -moz-box-shadow:4px 4px 4px  
4px rgb(250, 147, 156); -webkit-box-  
shadow:4px 4px 4px 4px rgb(250, 147, 156);  
box-shadow:4px 4px 4px 4px rgb(250, 147,  
156) }
```

# Background

The CSS property to change the background color of an element to CIELCh 72, 41.525, 17.055 is called "background". The background property can be set on classes, ids or directly on the HTML element.

```
.background, #background, body{  
background: rgb(250, 147, 156) }
```

If only the background color should be changed can be used:

```
.background{ background-color: rgb(250,  
147, 156) }
```

This example shows the color as background, it is applied via the CSS property "background".

To optimize and compress your CSS code, you can use our [online CSS compressor and optimizer](#) based on csstidy. If you want to create a linear or radial gradient as background or border, check our [CSS Gradient Generator](#).

Hey! You found this booklet interesting? Support Converting Colors with the new Membership Option!

The pro membership hides all ads, plus gives you double the colors in the color bucket, and more awesome pro features!

**[Learn more, Memberships starting at \\$2.50/m!](#)**

**Follow me  
on Twitter!**

@ConvertingColor